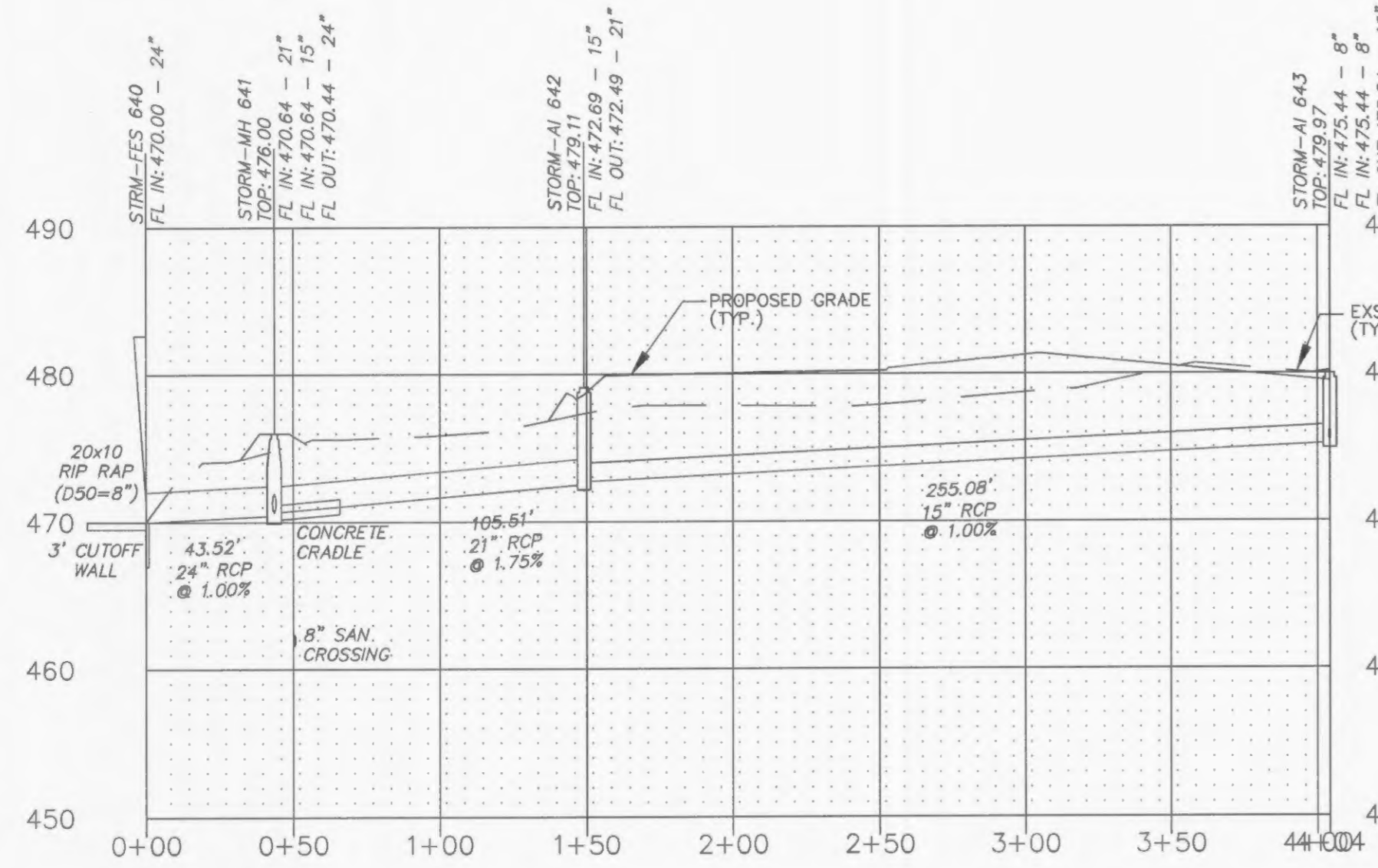


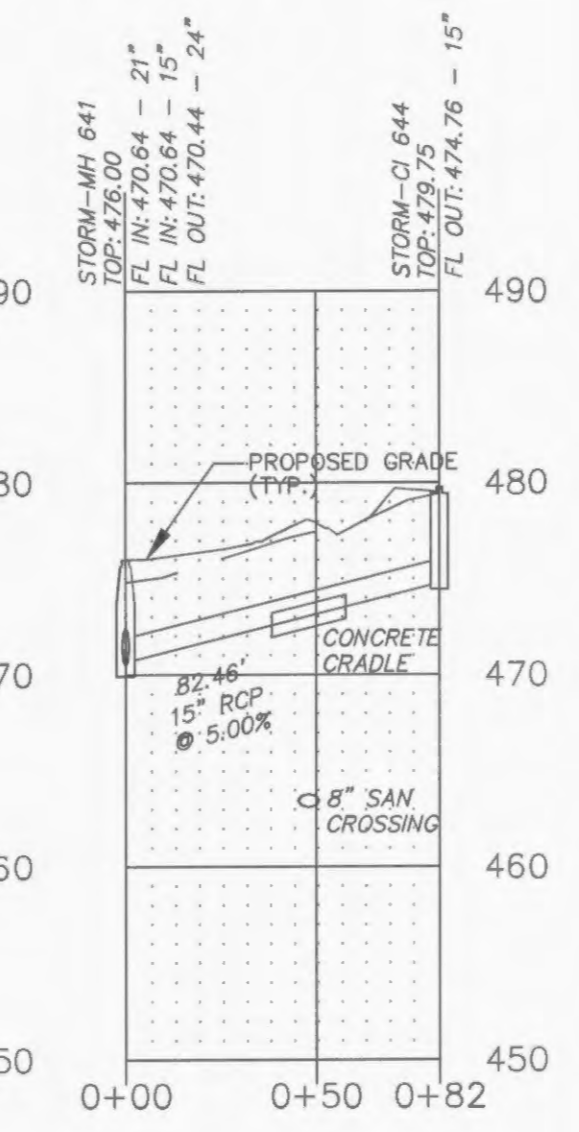
PR STRM 1

PR STRM 2

PR STRM 3



PR STRM 4



PR STRM 5

IF THE STORM AND SANITARY SEWERS ARE PARALLEL AND IN THE SAME TRENCH OR OVERDIG, THE UPPER SHALL BE PLACED ON A SHELF AND THE LOWER SHALL BE BEDDED IN COMPACTED GRANULAR FILL TO THE FLOW LINE OF THE UPPER.

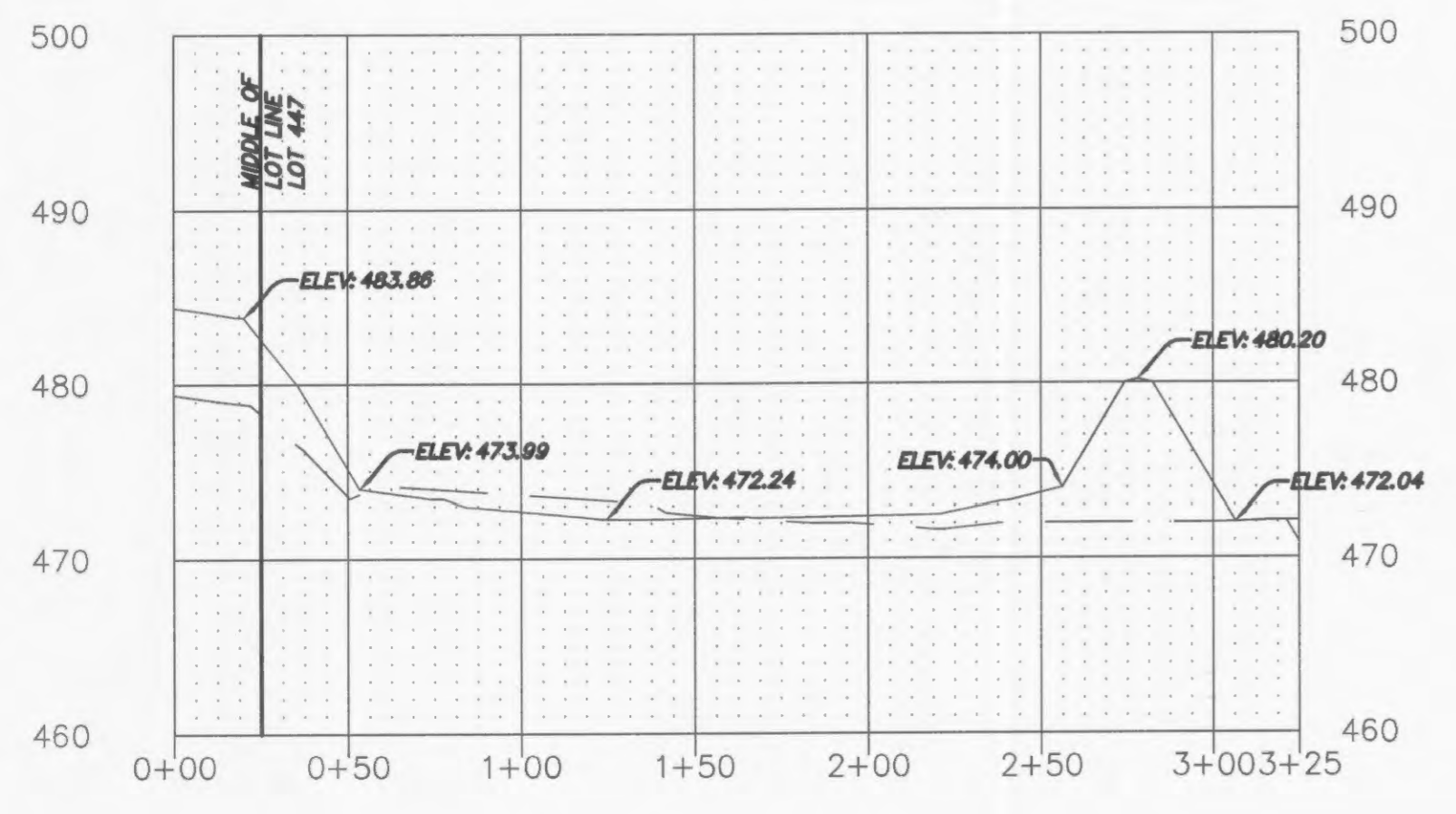
STORM SEWERS AND WATER LINES WHICH CROSS OVER EXISTING OR PROPOSED SANITARY SEWER TRENCHES SHALL BE CRADLED IN CONCRETE (OR ENCASED H.D.P.E.) THROUGH THE FULL WIDTH OF THE SANITARY SEWER TRENCH. THE TRENCH SHALL BE BACKFILLED AND COMPACTED GRANULAR FILL TO THE BOTTOM OF THE CONCRETE CRADLE.

ALL STORM SEWER MUST MAINTAIN A MINIMUM OF 36" COVER OVER THE TOP OF PIPE.

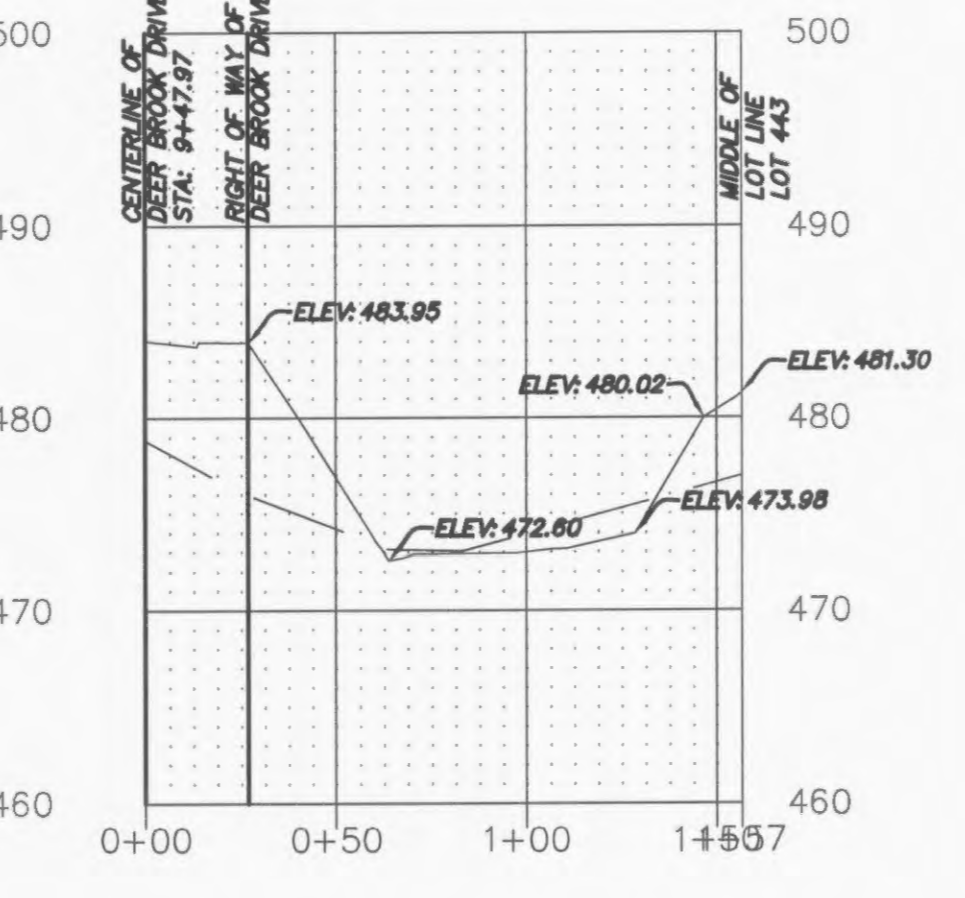
SI Charles County Government  
Hydraulic Review Output Data  
08/22/14

WPRS-SBS20111\Project\03029-LOMBARD HOMES\HYDRAULIC\OS-652\Phase 2A\Hydraulic Review\Full Flow

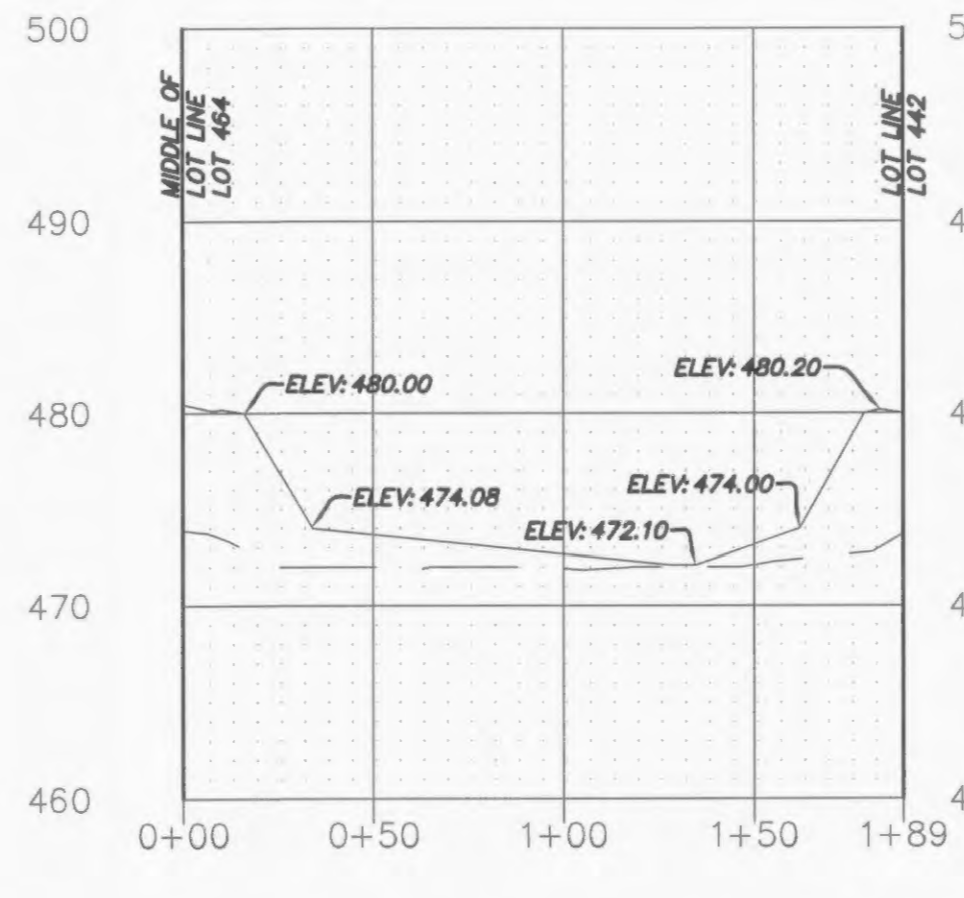
Up	Low	PL	S	Up	Low	PS	Up	Depth	Up	Low	Hyd	FR	VEL	Turn	Curve	STR	In	DR	Pipe	Remarks				
Str	Str			FL	FL	FL	FL	HT	HT	HT	Grade	Head	VEL	Loss	Loss	Grade	Cap	Area	Q	TQ	Cap			
1	CI 644	MH 641	83	15	474.76	470.64	4.99	479.75	4.72	475.04	472.07	0.00060	0.05	1.25	0.02	0.02	0.00	4.00	0.54	2.85	1.54	1.54	14.43	
2	AI 643	AI 642	255	15	475.24	474.89	0.22	479.97	3.53	476.44	475.94	0.00170	0.43	2.16	0.07	0.07	0.00	16.00	0.93	2.58	2.65	2.65	3.03	
3	AI 642	MH 641	106	21	472.49	470.64	1.75	476.99	5.98	473.02	472.98	0.00070	0.07	1.74	0.05	0.00	0.03	0.00	16.00	0.54	2.85	1.54	4.19	20.96
4	MH 641	FE 640	44	24	470.44	470.00	1.01	478.00	3.93	472.07	472.00	0.00060	0.03	1.82	0.05	0.04	0.00	0.00	0.00	0.00	2.85	0.00	5.73	22.74
5	CI 646	MH 645A	128	12	474.80	473.52	1.00	481.26	5.18	478.08	474.52	0.00980	1.25	4.49	0.31	0.31	0.00	4.00	1.24	2.58	3.53	3.53	3.56	
6	MH 645A	FE 645	35	12	473.32	472.97	1.00	479.85	5.40	474.45	473.97	0.00980	0.34	4.49	0.31	0.14	0.00	4.00	0.00	2.85	0.00	3.23	3.96	
7	DCI 665	MH 654	48	12	476.01	475.53	1.00	481.16	2.81	478.35	477.55	0.01000	0.48	4.53	0.32	0.32	0.00	8.00	1.25	2.58	3.56	3.56	3.56	
8	CI 659	CI 658	35	18	480.45	480.07	1.08	488.47	6.32	482.15	481.57	0.00550	0.23	4.78	0.35	0.35	0.00	4.00	0.29	2.85	0.83	0.45	10.92	
9	CI 658	MH 657A	20	18	479.89	479.67	1.10	488.34	6.84	481.50	481.16	0.00790	0.16	5.26	0.43	0.00	0.16	4.00	0.31	2.85	0.89	0.33	11.02	
10	MH 657A	MH 657	19	18	479.47	479.28	1.00	488.81	7.63	481.18	480.83	0.00790	0.15	5.28	0.43	0.00	0.20	0.00	0.00	0.00	0.00	0.00	9.33	10.50
11	MH 657	MH 656A	73	18	478.28	478.55	1.00	489.33	6.50	480.83	480.05	0.00790	0.58	5.28	0.43	0.00	0.20	0.00	0.00	0.00	0.00	0.00	9.33	10.50
12	MH 656A	AI 656	148	21	478.35	477.61	0.50	486.63	6.60	480.03	479.36	0.00350	0.52	3.86	0.23	0.00	0.15	0.00	0.00	0.00	2.85	0.00	9.33	11.20
13	AI 656	MH 655B	115	24	477.41	476.83	0.50	482.57	3.40	479.27	478.83	0.00270	0.31	3.72	0.21	0.00	0.13	0.00	0.00	0.00	2.85	0.00	2.37	11.70
14	MH 655B	MH 655A	23	24	476.83	476.52	0.49	484.08	5.40	478.68	478.52	0.00270	0.08	3.72	0.21	0.00	0.10	0.00	0.00	0.00	0.00	0.00	11.70	15.84
15	MH 655A	MH 655	75	24	476.32	475.99	0.45	484.48	6.20	478.28	477.98	0.00270	0.20	3.72	0.21	0.00	0.10	0.00	0.00	0.00	0.00	0.00	14.04	19.85
16	MH 655	MH 654	61	24	475.83	475.39	0.77	484.02	6.13	477.89	477.55	0.00390	0.24	4.47	0.31	0.00	0.10	0.00	0.00	0.00	0.00	0.00	14.04	19.85
17	MH 654	MH 653A	115	30	475.33	474.81	0.45	481.97	4.42	477.55	477.31	0.00180	0.21	3.59	0.20	0.00	0.00	0.00	0.00	0.00	0.00	0.00	17.80	27.52
18	MH 653A	FE 653	23	30	474.68	473.92	3.35	480.93	4.07	476.46	476.42	0.00180	0.04	3.59	0.20	0.00	0.00	0.00	0.00	0.00	0.00	0.00	17.80	75.07



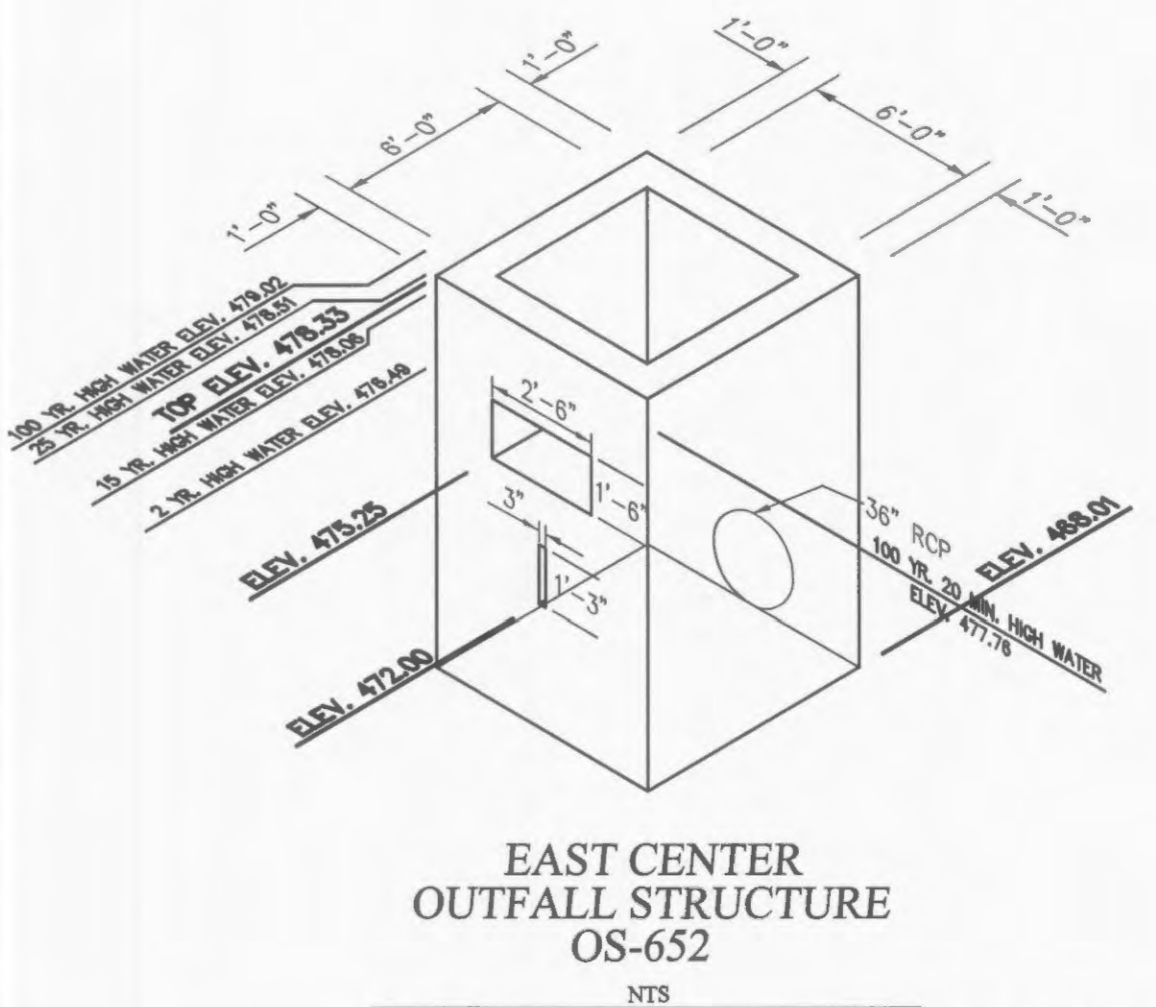
EAST CENTER BASIN XSECTION D-D



EAST CENTER BASIN XSECTION E-E



EAST CENTER BASIN XSECTION F-F



EAST CENTER  
OUTFALL STRUCTURE  
OS-652  
NTS

City of O'Fallon Standard Subdivision Notes and Details - June 2010

**PROJECT TITLE**  
IMPROVEMENT PLANS  
**BROOKSIDE**  
VILLAGE B 2-A  
STORM PROFILES

**PICKETT, RAY & SILVER, INC.**  
CIVIL ENGINEERING, LAND SURVEYING,  
AND NATURAL RESOURCES SERVICES

22 Richmond Center Court  
St. Peters, MO 65376  
Phone (636) 397-1211 Fax (636) 397-1104  
www.prs3.com 1-800-706-3918

**ENGINEER'S AUTHENTICATION**  
KARL A. SCHOENIKE  
PE-200301503  
PROFESSIONAL ENGINEER

**Developer / Owner Information**  
Lombardo Homes of St. Louis, LLC  
2299 Technology Drive, Suite 150  
O'Fallon, Missouri 63368

P+Z No. 2603.04  
City No. 14-156-8P

Page No. **9 of 19**  
STORM PROFILES

APPROVED FOR CONSTRUCTION 08/22/14