

NOTES:

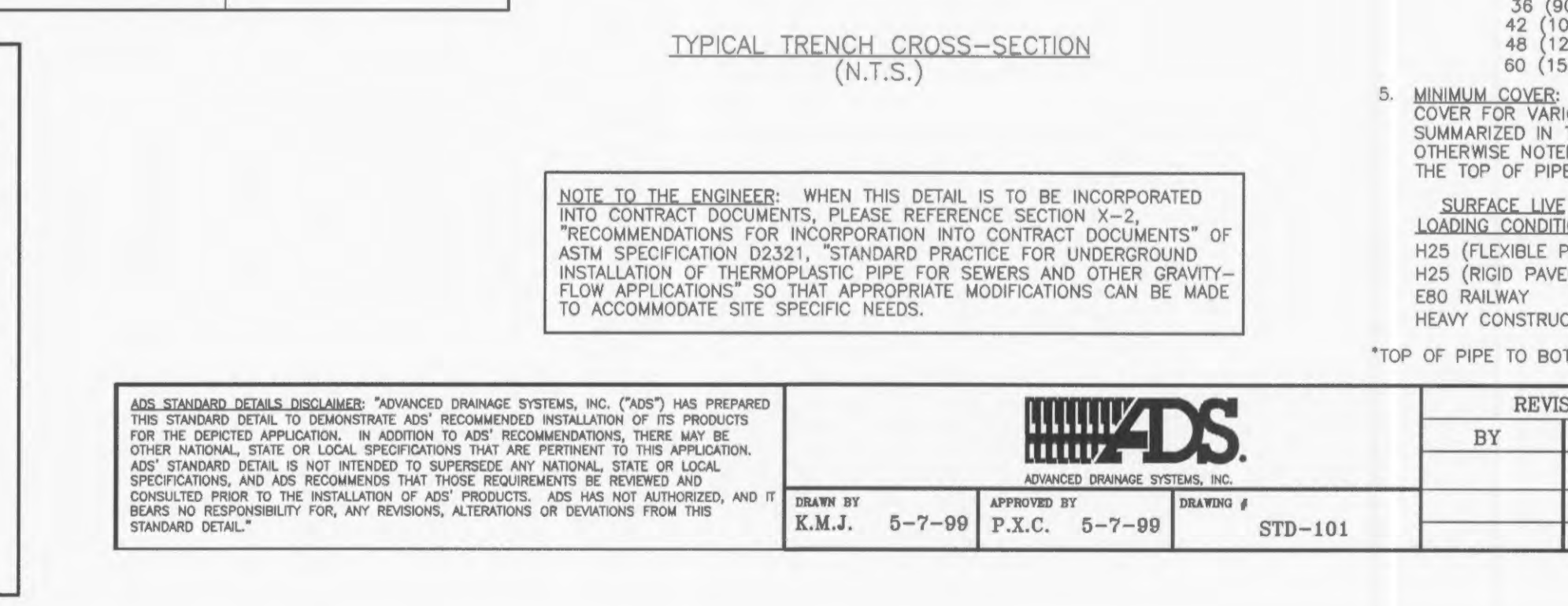
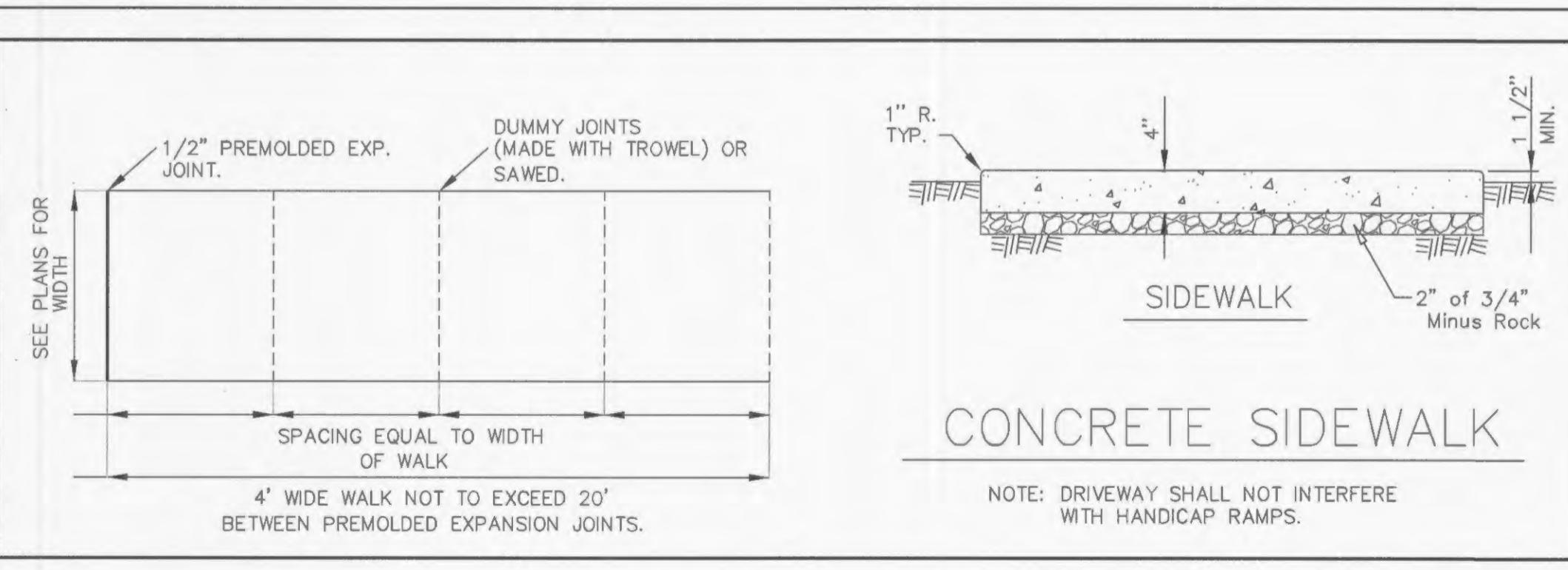
- FOUNDATION: WHERE THE TRENCH BOTTOM IS UNSTABLE, THE CONTRACTOR SHALL EXCAVATE TO A DEPTH REQUIRED BY THE ENGINEER AND REPLACE WITH A FOUNDATION OF CLASS I OR II MATERIAL AS DEFINED IN ASTM D2321, STANDARD PRACTICE FOR INSTALLATION OF THERMOPLASTIC PIPE FOR SEWERS AND OTHER GRAVITY-FLOW APPLICATIONS, LATEST EDITION; AS AN ALTERNATIVE AND AT THE DISCRETION OF THE ENGINEER, THE TRENCH BOTTOM MAY BE STABILIZED USING A WOVEN GEOTEXTILE FABRIC.
- BEDDING: SUITABLE MATERIAL SHALL BE CLASS I, II OR III AND INSTALLED AS REQUIRED IN ASTM D2321, LATEST EDITION. UNLESS OTHERWISE SPECIFIED BY THE ENGINEER, MINIMUM BEDDING THICKNESS SHALL BE 4" (100mm) FOR 4"-24" (100-600mm) AND 42"-48" (1050-1200mm) CORRUGATED POLYETHYLENE PIPE (CPEP); 6" (150mm) FOR 30"-36" (750-900mm) CPEP.
- HAUNCHING AND INITIAL BACKFILL: SUITABLE MATERIAL SHALL BE CLASS I, II OR III AND INSTALLED AS REQUIRED IN ASTM D2321, LATEST EDITION.
- UNLESS OTHERWISE SPECIFIED BY THE ENGINEER, MINIMUM TRENCH WIDTHS SHALL BE AS FOLLOWS:

NOMINAL ϕ in (mm)	MIN. RECOMMENDED TRENCH WIDTH, in (mm)
4 (100)	21 (530)
6 (150)	23 (580)
8 (200)	25 (630)
10 (250)	28 (710)
12 (300)	31 (790)
15 (375)	34 (860)
18 (450)	39 (990)
24 (600)	48 (1220)
30 (750)	66 (1680)
36 (900)	78 (1980)
42 (1050)	83 (2110)
48 (1200)	89 (2260)
60 (1500)	102 (2590)

5. MINIMUM COVER: MINIMUM RECOMMENDED DEPTHS OF COVER FOR VARIOUS LIVE LOADING CONDITIONS ARE SUMMARIZED IN THE FOLLOWING TABLE. UNLESS OTHERWISE NOTED, ALL DIMENSIONS ARE TAKEN FROM THE TOP OF PIPE TO THE GROUND SURFACE.

SURFACE LIVE LOADING CONDITION	MINIMUM RECOMMENDED COVER, in (mm)
H25 (FLEXIBLE PAVEMENT)	12 (300)
H25 (RIGID PAVEMENT)	12 (300)
EBO RAILWAY	24 (610)
HEAVY CONSTRUCTION	48 (1220)

*TOP OF PIPE TO BOTTOM OF BITUMINOUS PAVEMENT SECTION



REVISIONS

BY	DATE

ADDITIONAL INFORMATION:

* All other Storm or Sanitary Sewer Details will be by M.S.D. 2007 Standards and Specifications.

PROJECT TITLE
IMPROVEMENT PLANS
BROOKSIDE
VILLAGE B 2-A
DETAILS

PICKETT, RAY & SILVER INC
CIVIL ENGINEERING, LAND SURVEYING,
AND NATURAL RESOURCES SERVICES

ST. CHARLES
22 Richmond Center Court
St. Peters, MO 65076

Phone (636) 397-1211 Fax (636) 397-1104
www.prs3.com 1-800-708-3918

ENGINEER'S AUTHENTICATION
THE RESPONSIBILITY FOR PROFESSIONAL ENGINEERING LIABILITY OF THIS PROJECT IS HEREBY LIMITED TO THE SET OF PLANS AUTHORIZED BY THE SEAL, EXPLOSURE, AND DATE HEREON ATTACHED. RESPONSIBILITY IS CLAIMED FOR ALL OTHER ENGINEERING PLANS SHOWN ON THIS PROJECT AND SPECIFICALLY EXCLUDED HEREON AFTER THIS DATE UNLESS REAUTHENTICATED.

KARL ANTHONY SCHOENIKE
NUMBER
PE-2003015039
PROFESSIONAL ENGINEER

STATE OF MISSOURI
ELECTRONIC SEAL
KARL A. SCHOENIKE, P.E.
PROFESSIONAL ENGINEER LICENSE 2003015039

Developer / Owner Information
Lombardo Homes of St. Louis, LLC
2289 Technology Drive, Suite 150
O'Fallon, Missouri 63368

50 YEARS
Lombardo
H-O-N-E-S-T
OF EXCELLENCE

P+Z No. 2603.04
City No. 14-156-SP
Page No.
15 of 19
DETAILS

APPROVED FOR CONSTRUCTION 08/22/14