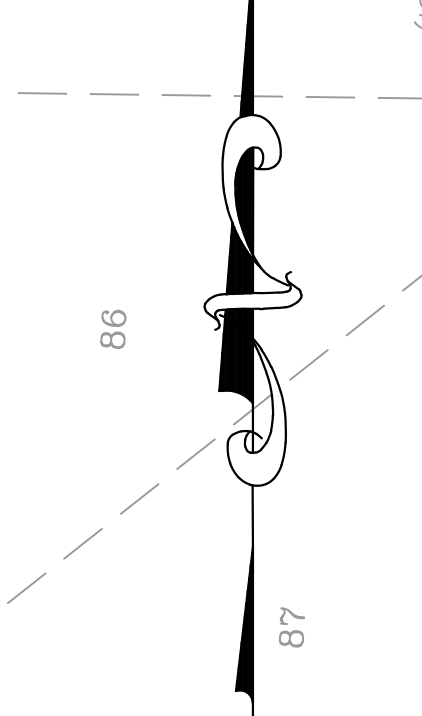
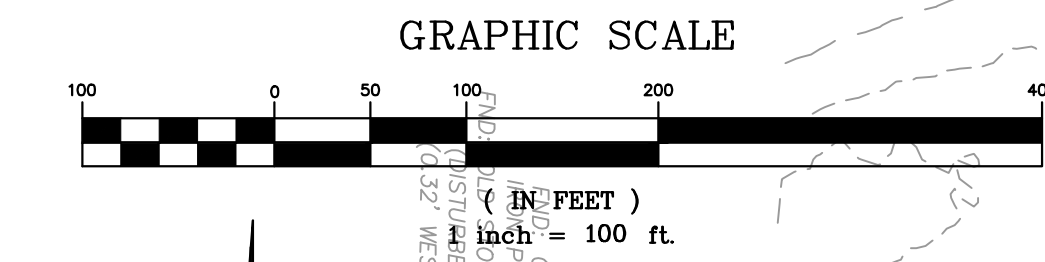


**Brookview**  
Drainage Areas  
1/11/2018

Drainage Area	Total Area (ac)	5% Impervious (PI=1.87 cfs/ac.) (ac.)	40% Impervious (PI=2.64 cfs/ac.) (ac.)	100% Impervious (PI=3.85 cfs/ac.) (ac.)	Q <sub>15</sub> (cfs)	Q <sub>100</sub> (cfs)	Upstream Inlet #	Downstream Inlet #	Total Q <sub>15</sub> in Pipe	Total Q <sub>100</sub> in Pipe
1	1.43	0.00	1.43	0.00	3.78	5.97	105	104A	3.78	5.97
2	0.14	0.00	0.14	0.00	0.36	0.57	104	103	4.14	6.54
3	0.57	0.00	0.57	0.00	1.50	2.36	306	305	1.50	2.36
4	0.47	0.00	0.47	0.00	1.23	1.94	305	303	2.72	4.30
5	0.40	0.00	0.40	0.00	1.06	1.67	302	301	3.78	5.97
6	0.35	0.35	0.00	0.00	0.66	1.04	300	205	4.44	7.02
7	2.73	0.00	2.73	0.00	7.20	11.38	205	204	11.64	18.39
8	0.52	0.00	0.52	0.00	1.36	2.15	247	236	1.36	2.15
9	0.26	0.00	0.26	0.00	0.69	1.09	238	237	0.69	1.09
10	0.31	0.00	0.31	0.00	0.81	1.27	237	236	1.49	2.36
11	0.35	0.00	0.35	0.00	0.93	1.47	246	235	0.93	1.47
12	0.55	0.00	0.55	0.00	1.45	2.29	245	234	1.45	2.29
13	0.39	0.00	0.39	0.00	1.03	1.63	244	233	1.03	1.63
14	0.23	0.00	0.23	0.00	0.62	0.98	243	232	0.62	0.98
15	0.91	0.00	0.91	0.00	2.39	3.78	232	231	8.48	13.39
16	0.77	0.00	0.77	0.00	2.03	3.21	231	229	10.51	16.61
17	0.63	0.00	0.63	0.00	1.67	2.63	228	227	14.57	23.02
18	0.19	0.00	0.19	0.00	0.50	0.80	248A	248	0.50	0.80
19	0.19	0.00	0.19	0.00	0.49	0.78	248	229	1.00	1.57
20	0.53	0.00	0.53	0.00	1.40	2.21	229	228	12.90	20.39
21	0.25	0.00	0.25	0.00	0.66	1.04	224	223	0.66	1.04
22	0.34	0.00	0.34	0.00	0.89	1.41	223	222	1.55	2.45
23	0.10	0.00	0.10	0.00	0.26	0.41	222	221	1.81	2.85
24	0.41	0.00	0.41	0.00	1.08	1.71	221	220	2.89	4.57
25	0.13	0.00	0.13	0.00	0.35	0.55	220	219	3.23	5.11
26	0.29	0.00	0.29	0.00	0.75	1.19	219	218	3.99	6.30
27	0.23	0.00	0.23	0.00	0.60	0.94	218	217	4.58	7.24
28	0.24	0.00	0.24	0.00	0.62	0.98	217	216	5.21	8.23
29	0.34	0.00	0.34	0.00	0.89	1.40	216	215	6.09	9.62
30	1.42	0.00	1.42	0.00	3.75	5.93	241	240	3.75	5.93
31	0.19	0.00	0.19	0.00	0.50	0.79	239	227	4.25	6.71
32	1.96	1.41	0.56	0.00	4.10	6.48	215	213	24.91	39.36
33	0.08	0.00	0.08	0.00	0.21	0.32	202	201	36.45	57.59
34	0.30	0.15	0.00	0.15	0.86	1.35	201	200	48.09	75.98
35	0.10	0.10	0.00	0.00	0.19	0.31				
36	0.51	0.00	0.51	0.00	1.35	2.13	253	252	1.35	2.13



Drawing name: V11702041\_Guthrie\_RoadDrawings\Engineering\Improvements\2018\IMP.dwg, Plotted on: Jan 11, 2018, 5:50am, Plotted by: ackley

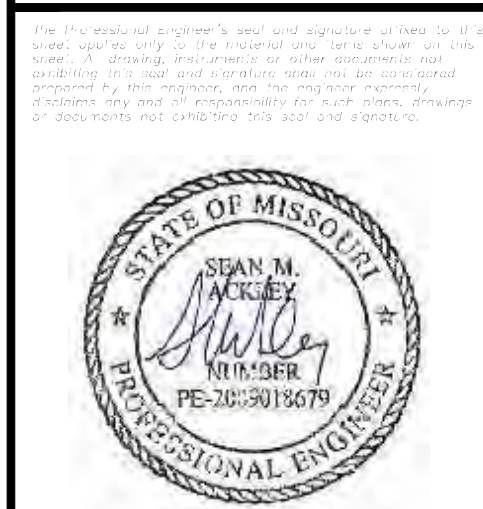


ISSUE	DATE	REMARKS
1	06/26/2017	Initial Submittal
2	10/06/2017	City Comments
3	11/10/2017	City Comments
4	12/16/2017	City Comments
5	01/11/2018	City Resubmittal

PROJECT TITLE

**Brookview**  
OF FALLON, MISSOURI

**THE STERLING CO.**  
ENGINEERS & SURVEYORS  
5055 New Baumgardner Road  
St. Louis, Missouri 63129  
Ph. 314-487-0440 Fax 314-487-8944  
www.sterling-eng-survey.com  
Corporate Certificate of Authority #001348



Date: 01/11/18  
SEAN ACKLEY  
LICENSE # PE-2009018679  
Civil Engineer

**McBride Guthrie, LLC**  
16091 Swingley Ridge Road, Suite 300  
Chesterfield, Missouri 63017  
Ph. (636) 537-2000  
Fax (636) 537-2546

P-Z No. 17-005894  
City No. 17-008288  
Date: 01/11/18  
Job No. 17-02-041

Page No.  
**10.5**  
IMP

DRAINAGE AREA MAP