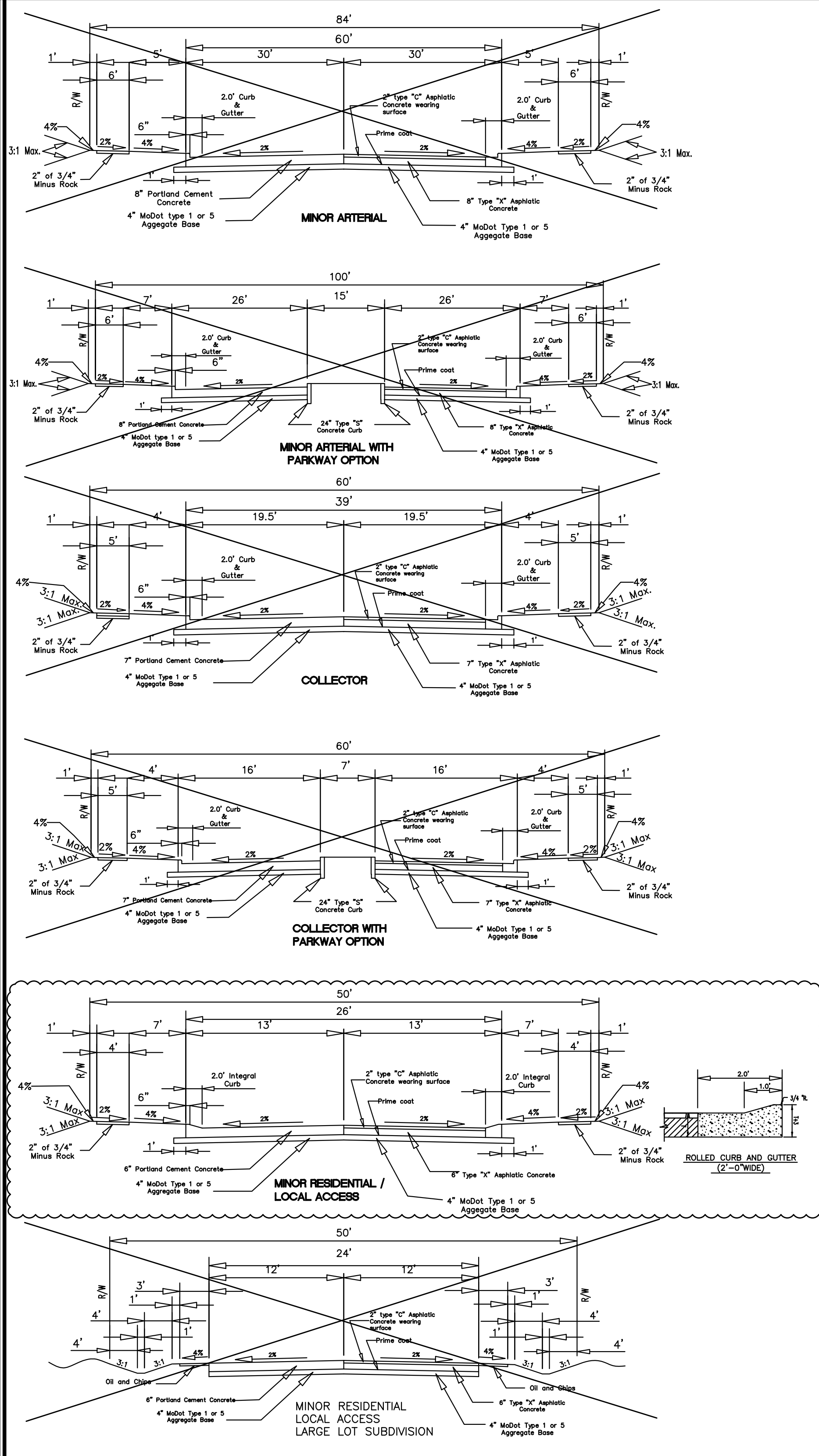


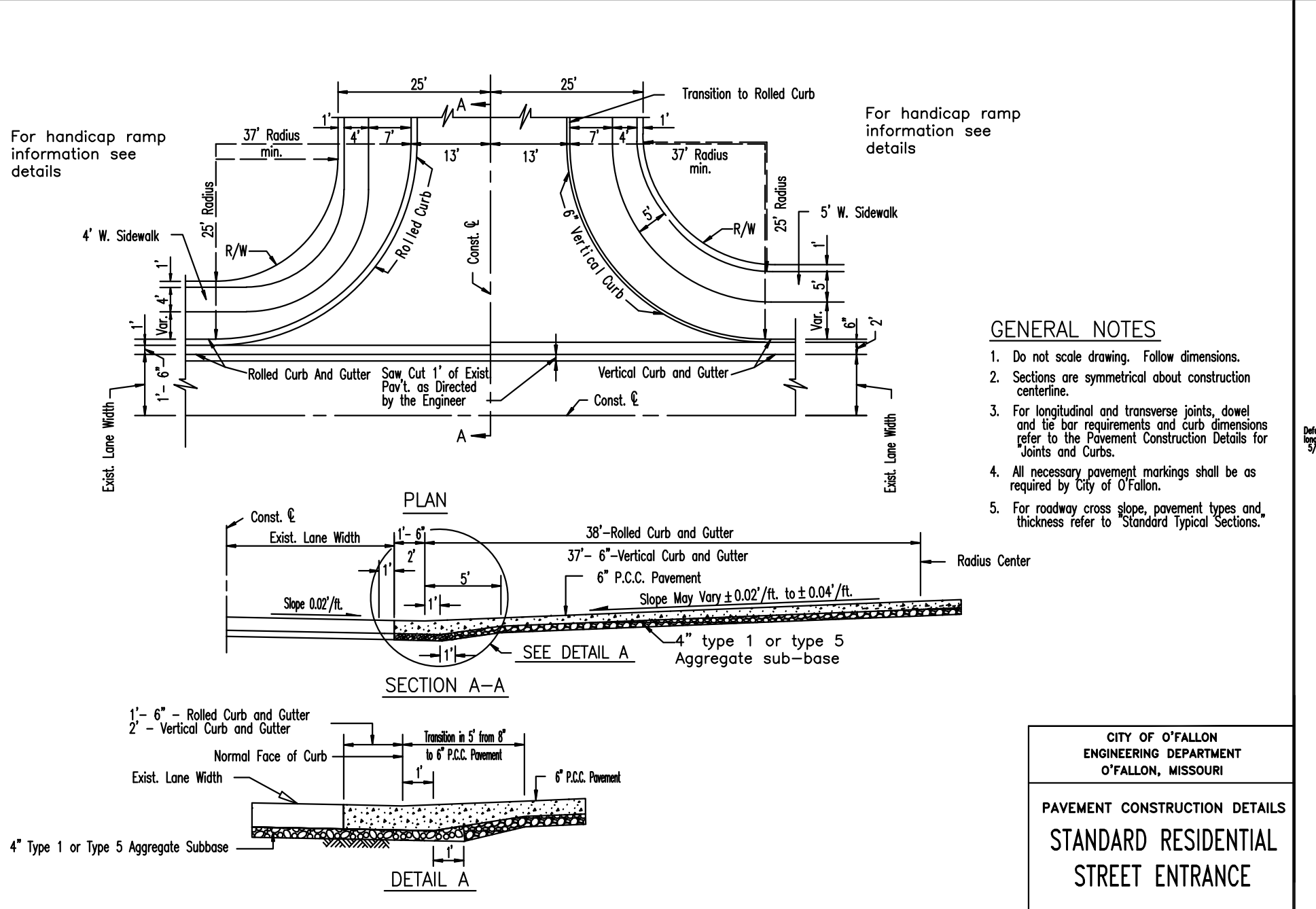
ISSUE	DATE	REMARKS
1	06/26/2017	Initial Submittal
2	10/06/2017	City Comments
3	11/10/2017	City Comments
4	12/16/2017	City Comments
5	01/11/2018	City Resubmittal

NOTE: ALL NON-REINFORCED CONCRETE SHALL BE 4,000 P.S.I. AT 28 DAYS.

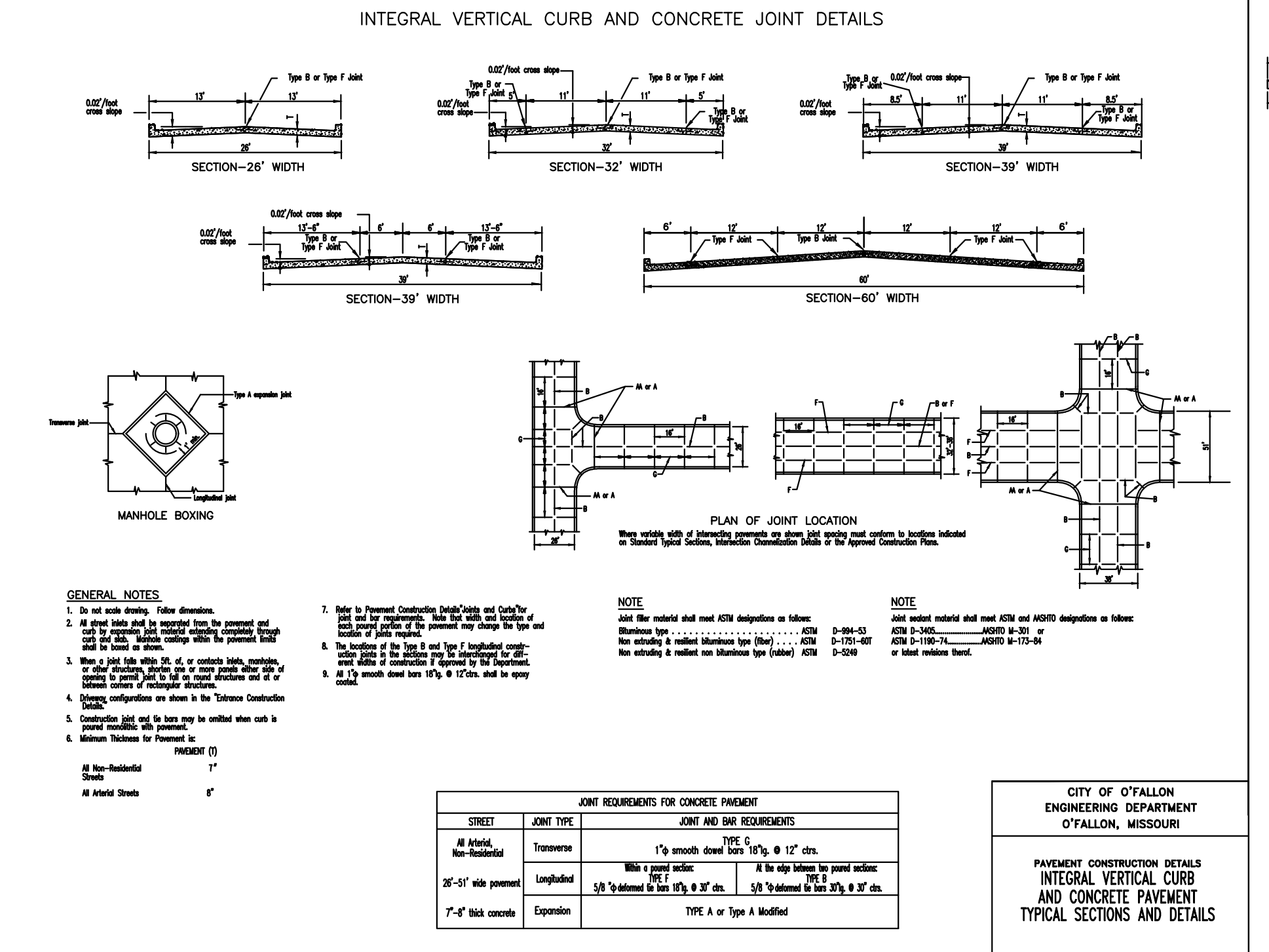


	ROW Width	Pavement Width	Lane Width	No. of Drive Lanes	Utility Easement	Design Speed
Minor Arterial	84	60	12	5	10	40
Collector	60	39	12	3	10	35
Residential Collector	56	32**	N/A	2	10	25
Minor Residential Local Access	50	26	N/A	2	10	25*

Notes: \* = Can be varied with City Engineer's approval  
 \*\* = Detail to match minor residential street with wider pavement  
 - these requirements may be varied by other City ordinances  
 - these standards are minimum standards  
 - Parkway options can be provided as indicated above



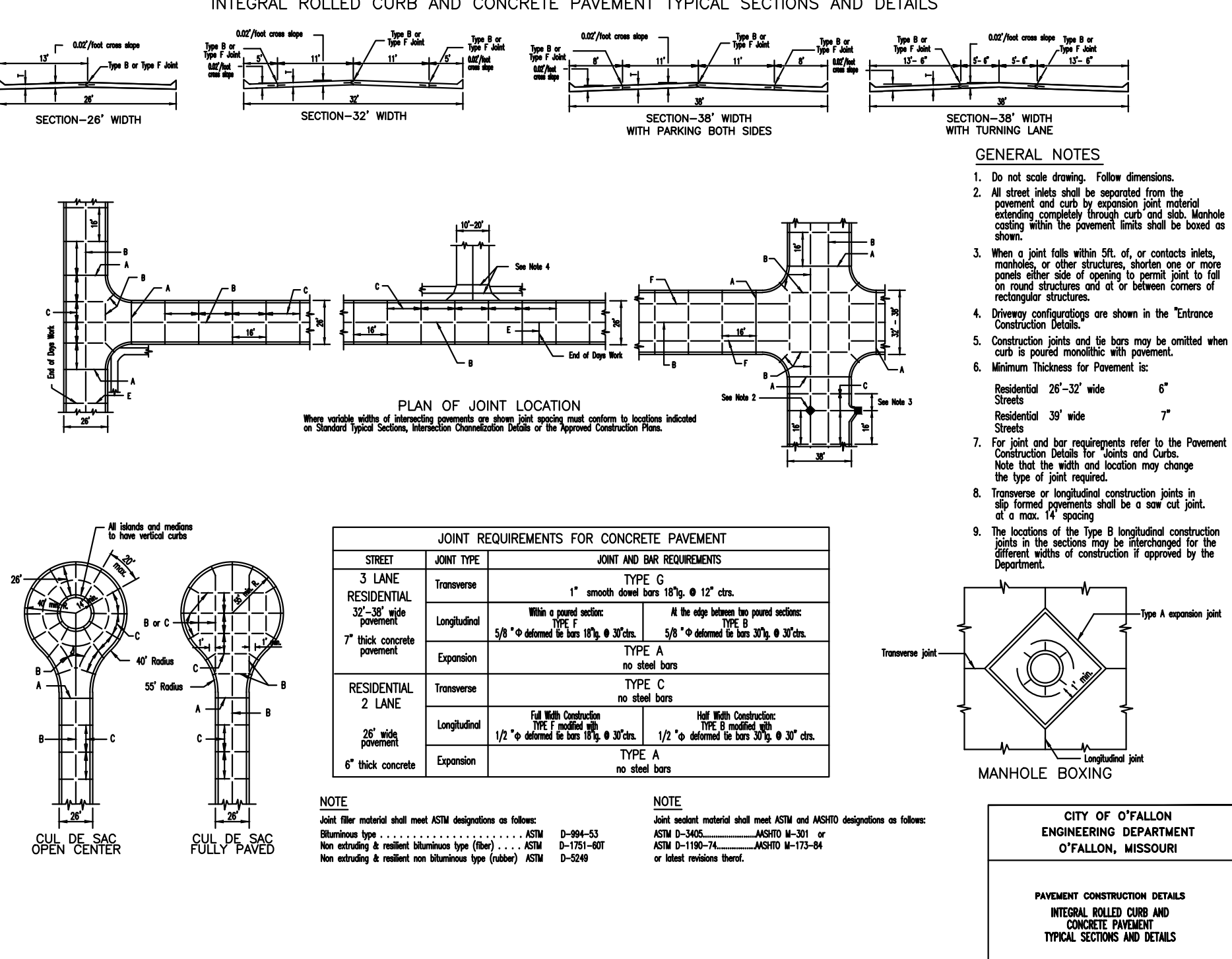
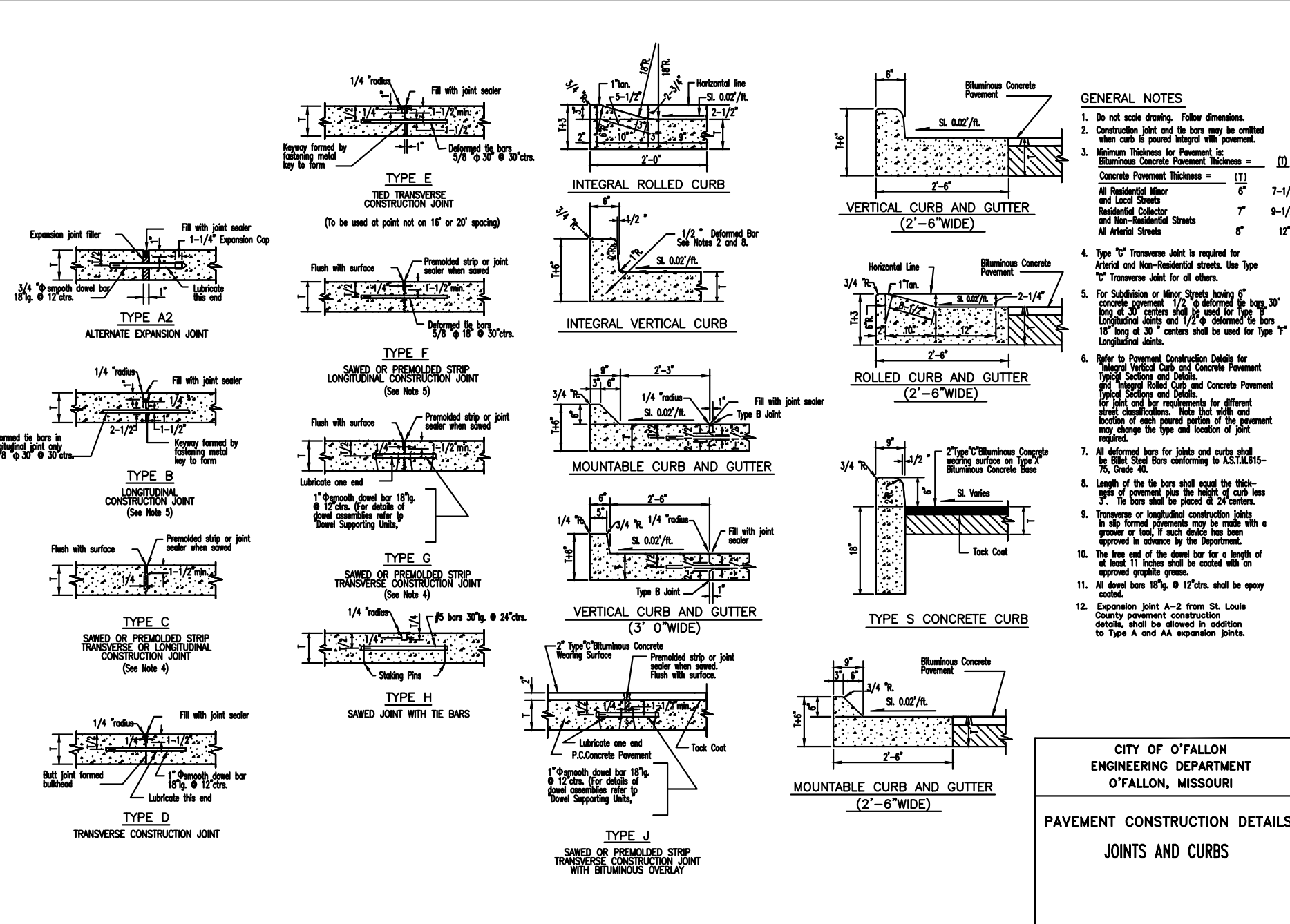
- GENERAL NOTES**
- Do not scale drawing. Follow dimensions.
  - Sections are symmetrical about construction centerline.
  - For longitudinal and transverse joints, dowel and bar requirements and curb dimensions refer to the Pavement Construction Details for Joints and Curbs.
  - All necessary pavement markings shall be as required by City of O'Fallon.
  - For roadway cross slope, pavement types and thickness refer to Standard Typical Sections.



- GENERAL NOTES**
- Do not scale drawing. Follow dimensions.
  - All steel reinforcement shall be separated from the pavement and curb by expanded polystyrene extending completely through curb and slab. Maximum spacing within the pavement shall be based on extending.
  - When a joint falls within 5ft. of a contact vehicle, motorcycle, or other structure, shorten one or more parallel side of opening to permit joint to fall on round structure and/or to between corners of rectangular structure.
  - Driveway configurations are shown in the "Entrance Construction Details".
  - Construction joints and bars may be omitted when curb is poured monolithic with pavement.
  - Minimum thickness for pavement is: Residential 26"-32" wide 6" Streets 32" wide 7" Streets
  - For joint and bar requirements refer to the Pavement Construction Details for Joints and Curbs. Note that the width and location may change the type of joint required.
  - Transverse or longitudinal construction joints in side formed pavements shall be a saw cut joint at a max. 10' spacing.
  - The location of the Type B longitudinal construction joints in the sections may be interchanged for the different widths of construction if approved by the Department.

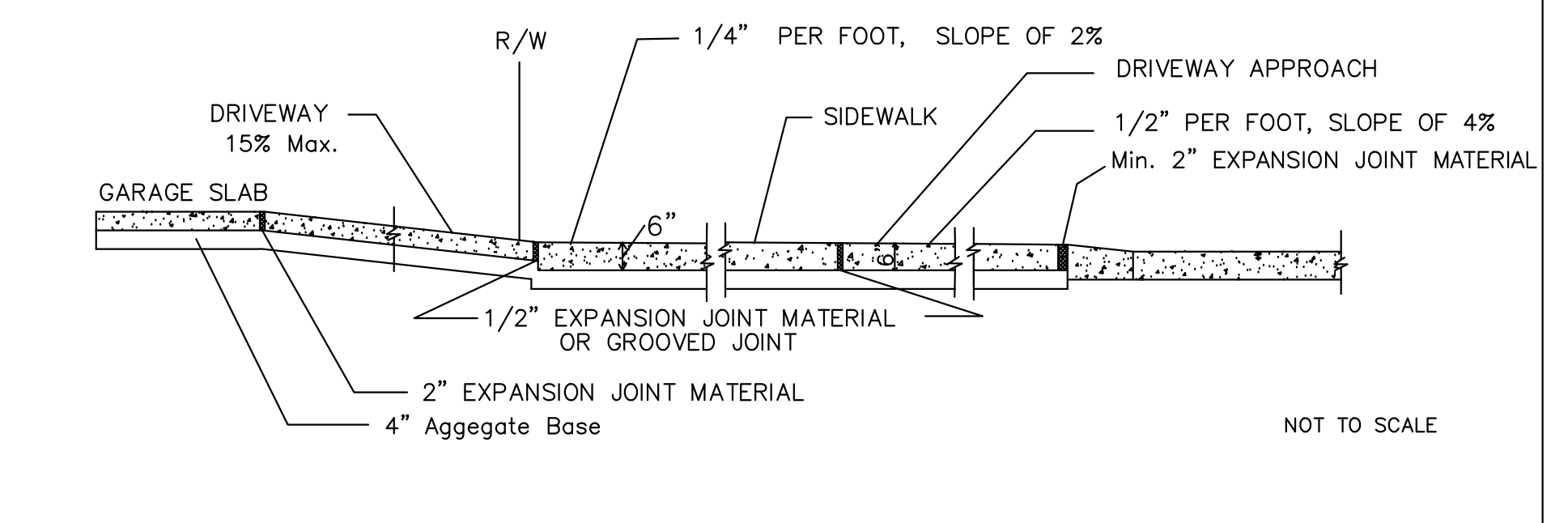
**JOINT REQUIREMENTS FOR CONCRETE PAVEMENT**

STREET	JOINT TYPE	JOINT AND BAR REQUIREMENTS
3 LANE RESIDENTIAL 32'-39" wide	Transverse	TYPE G 1" smooth steel bars 18" x 12" cts.
	Longitudinal	TYPE B 1/2" x 1/2" x 1/2" steel bars 18" x 12" cts. 1/2" x 1/2" x 1/2" steel bars 18" x 12" cts. 1/2" x 1/2" x 1/2" steel bars 18" x 12" cts.
	Expansion	TYPE A or Type A Modified
RESIDENTIAL 2 LANE 26" wide	Transverse	TYPE C no steel bars
	Longitudinal	TYPE B 1/2" x 1/2" x 1/2" steel bars 18" x 12" cts. 1/2" x 1/2" x 1/2" steel bars 18" x 12" cts.
7' thick concrete pavement	Transverse	TYPE A no steel bars
	Expansion	TYPE A no steel bars



**JOINT REQUIREMENTS FOR CONCRETE PAVEMENT**

STREET	JOINT TYPE	JOINT AND BAR REQUIREMENTS
3 LANE RESIDENTIAL 32'-39" wide	Transverse	TYPE G 1" smooth steel bars 18" x 12" cts.
	Longitudinal	TYPE B 1/2" x 1/2" x 1/2" steel bars 18" x 12" cts. 1/2" x 1/2" x 1/2" steel bars 18" x 12" cts. 1/2" x 1/2" x 1/2" steel bars 18" x 12" cts.
	Expansion	TYPE A or Type A Modified
RESIDENTIAL 2 LANE 26" wide	Transverse	TYPE C no steel bars
	Longitudinal	TYPE B 1/2" x 1/2" x 1/2" steel bars 18" x 12" cts. 1/2" x 1/2" x 1/2" steel bars 18" x 12" cts.
7' thick concrete pavement	Transverse	TYPE A no steel bars
	Expansion	TYPE A no steel bars



- NOTES**
- All driveway entrances shall be at (6) inches P.C.C. in depth from the curb to the property line.
  - All driveway approaches constructed in conjunction with sidewalk shall give the appearance that the sidewalk is continuous. That portion of the driveway approach that doubles as a sidewalk shall have a one-fourth (1/4) inch per foot cross slope the same as the abutting sidewalk.
  - A two (2) inch expansion joint is required between the street and driveway approach. One (1) additional two (2) inch expansion joint is required between the garage floor and the termination of the driveway.

CITY OF O'FALLON ENGINEERING DEPARTMENT O'FALLON, MISSOURI  
 Typical Pavement Design SECTION NO. 405.570

CITY OF O'FALLON ENGINEERING DEPARTMENT O'FALLON, MISSOURI  
 Integral Curb Detail "B" at Driveway SECTION NO. 505.080

PROJECT TITLE

Brookview

O'FALLON, MISSOURI

THE STERLING CO. ENGINEERS & SURVEYORS  
 5055 New Baumgartner Road  
 St. Louis, Missouri 63129  
 Ph. 314-487-0440 Fax. 314-487-8944  
 www.sterling-eng-sur.com  
 Corporate Certificate of Authority #001348



Date: 01/11/18  
 SEAN ACKLEY  
 LICENSE # PE-2009018679  
 Civil Engineer

McBride Guthrie, LLC  
 18091 Swingley Ridge Road, Suite 300  
 Chesterfield, Missouri 63017  
 Ph. (636) 537-2000  
 Fax (636) 537-2546

PAVEMENT DETAILS

P-Z No. 17-005894  
 City No. 17-008288  
 Date: 01/11/18  
 Job No. 17-02-041

Page No.

13.1

IMP