

LEGEND

L.D. = NOMINAL PIPE SIZE  
 O.D. = OUTSIDE DIAMETER OF PIPE  
 H = COVER ABOVE TOP OF PIPE  
 A = EMBEDDED BELOW PIPE (SEE TABLE)

TAMPED BACK FILL  
 COMPACTED BACK FILL  
 GRANULAR BEDDING

TABLE OF EMBEDDED DEPTHS BELOW PIPE		
L.D.	MIN. SOIL	A MIN. ROCK
27\"/>		

GRANULAR BEDDING SHALL BE CRUSHED ROCK OR PEA GRAVEL WITH NOT LESS THAN 95% PASSING 1/2\"/>

COMPACTED BACK FILL SHALL BE FINELY DIVIDED JOB EXCAVATED MATERIAL FREE FROM DEBRIS, ORGANIC MATERIAL AND STONES, PLACED IN UNIFORM LAYERS NOT MORE THAN 6\"/>

TAMPED BACK FILL SHALL BE FINELY DIVIDED JOB EXCAVATED MATERIAL FREE FROM DEBRIS, ORGANIC MATERIAL AND STONES, HAND PLACED IN UNIFORM LAYERS NOT MORE THAN 6\"/>

TRENCH BACK FILL SHALL BE AS REQUIRED IN THE "LAYING AND BACK FILL" SECTION OF THE DETAILED SPECIFICATIONS.

EMBEDDED THE TYPE OF EMBEDDED TO BE USED SHALL BE AS SPECIFIED IN THE PLANS AND SPECIFICATIONS.

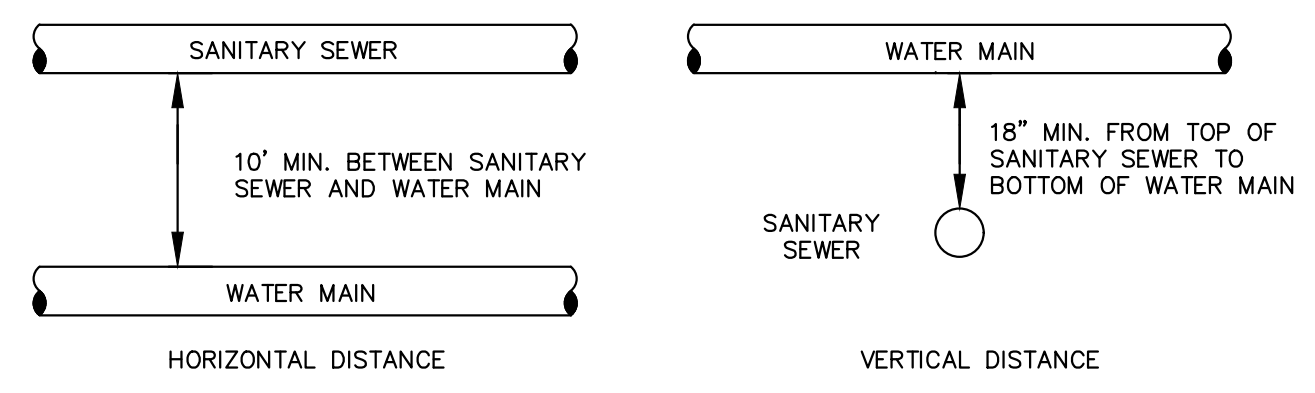
TRACER WIRE REQUIRED ON ALL WATER MAINS

**WATER MAIN EMBEDDED**

NOT TO SCALE

CITY OF O'FALLON  
 ENGINEERING DEPARTMENT  
 O'FALLON, MISSOURI

**WATER MAIN EMBEDDED**



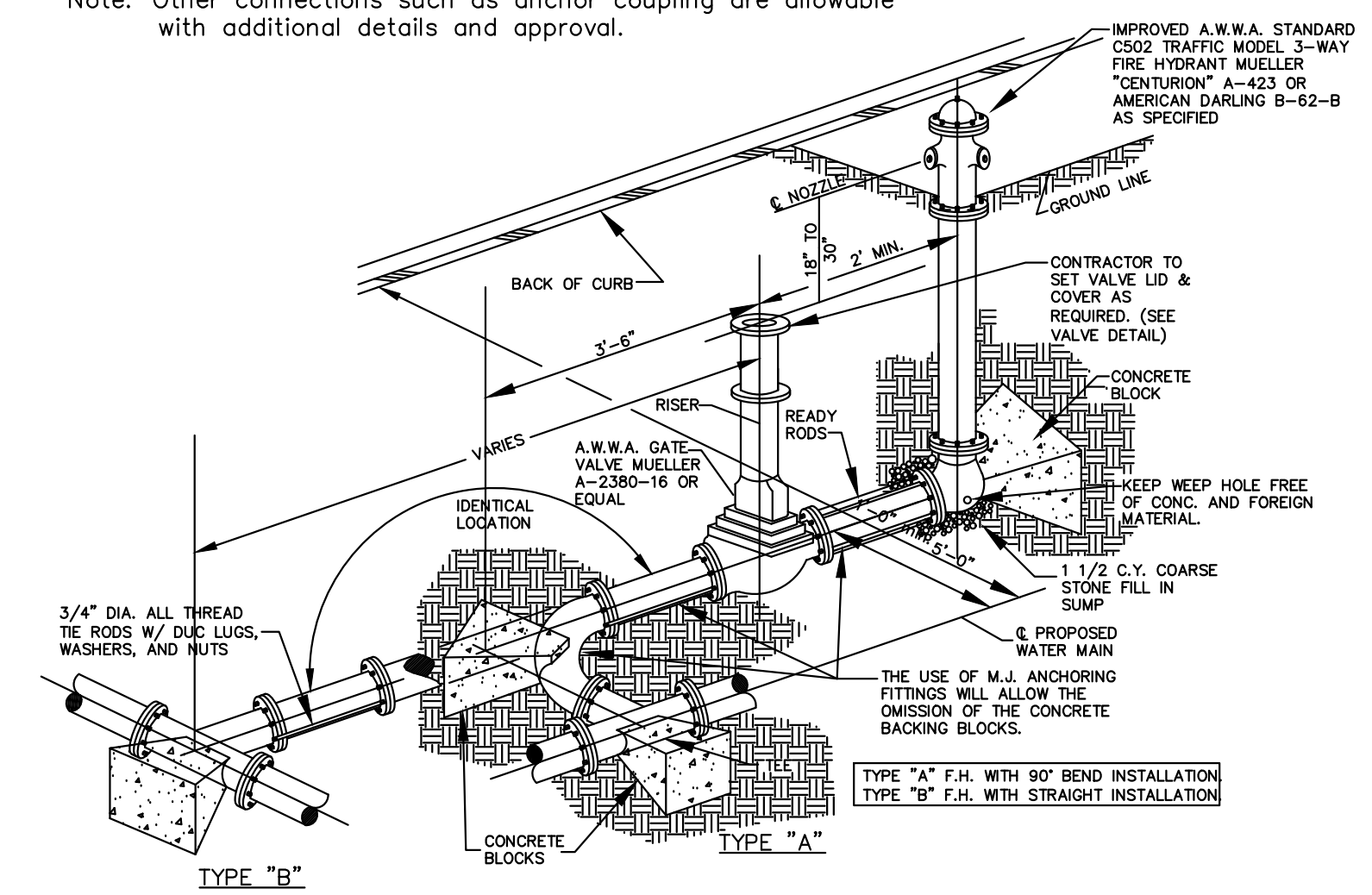
**TYPICAL WATER AND SEWER SEPARATION**

NOT TO SCALE

CITY OF O'FALLON  
 ENGINEERING DEPARTMENT  
 O'FALLON, MISSOURI

**WATER AND SEWER SEPARATION DETAIL**

Note: Other connections such as anchor coupling are allowable with additional details and approval.



**FIRE HYDRANT DETAILS**

NOT TO SCALE

CITY OF O'FALLON  
 ENGINEERING DEPARTMENT  
 O'FALLON, MISSOURI

**FIRE HYDRANT DETAILS**

ISSUE	DATE	REMARKS
1	06/28/2017	Initial Submittal
2	10/06/2017	City Comments
3	11/10/2017	City Comments
4	12/16/2017	City Comments
5	01/11/2018	City Resubmittal

PROJECT TITLE

**Brookview**

O'FALLON, MISSOURI

THE **STERLING** CO.  
 ENGINEERS & SURVEYORS

5055 New Baumgartner Road  
 St. Louis, Missouri 63129  
 Ph. 314-487-0440 Fax. 314-487-8944  
 www.sterling-eng-sur.com  
 Corporate Certificate of Authority #001348

Date: 01/11/18  
 SEAN ACKLEY  
 LICENSE # PE-2009018679  
 Civil Engineer

**McBride Guthrie, LLC**  
 16091 Swingley Ridge Road, Suite 300  
 Chesterfield, Missouri 63017  
 Ph. (636) 537-2000  
 Fax (636) 537-2546

**WATER DETAILS**

P+Z No. 17-005894  
 City No. 17-008288  
 Date: 01/11/18  
 Job No. 17-02-041

CITY OF O'FALLON  
 ENGINEERING DEPARTMENT  
 O'FALLON, MISSOURI

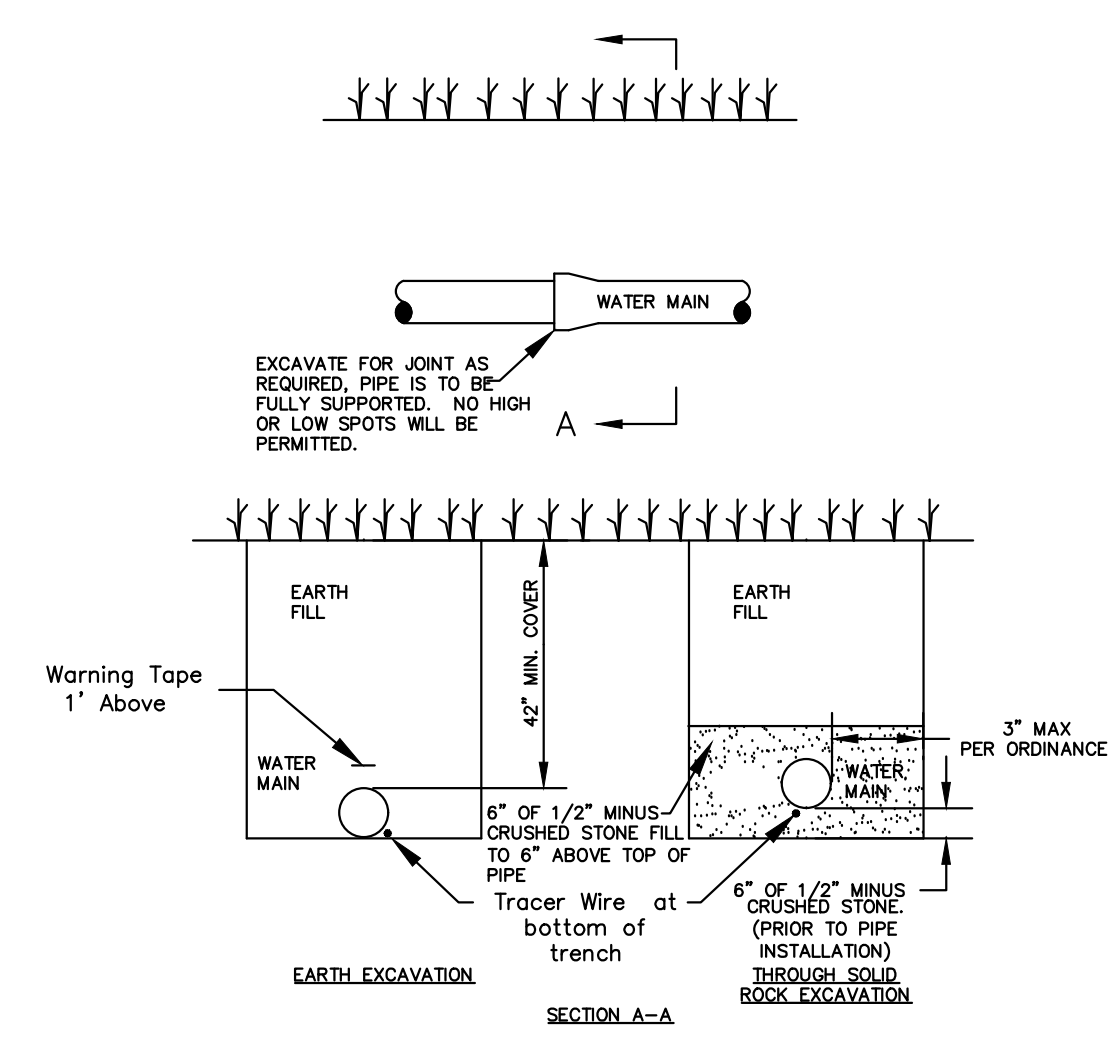
**WATER VALVE DETAIL**

Page No. **13.8**

CITY OF O'FALLON  
 ENGINEERING DEPARTMENT  
 O'FALLON, MISSOURI

**WATER VALVE DETAIL**

Ductile Iron Pipe installation shall follow the Ductile Iron Research Association (DIPRA) guide line.  
 The installation of PVC Pipe shall follow the Uni-Bell PVC Pipe Association Handbook of PVC Design and Construction.



**TYPICAL WATER MAIN INSTALLATION DETAILS**

NOT TO SCALE

CITY OF O'FALLON  
 ENGINEERING DEPARTMENT  
 O'FALLON, MISSOURI

**WATER MAIN INSTALLATION DETAIL**