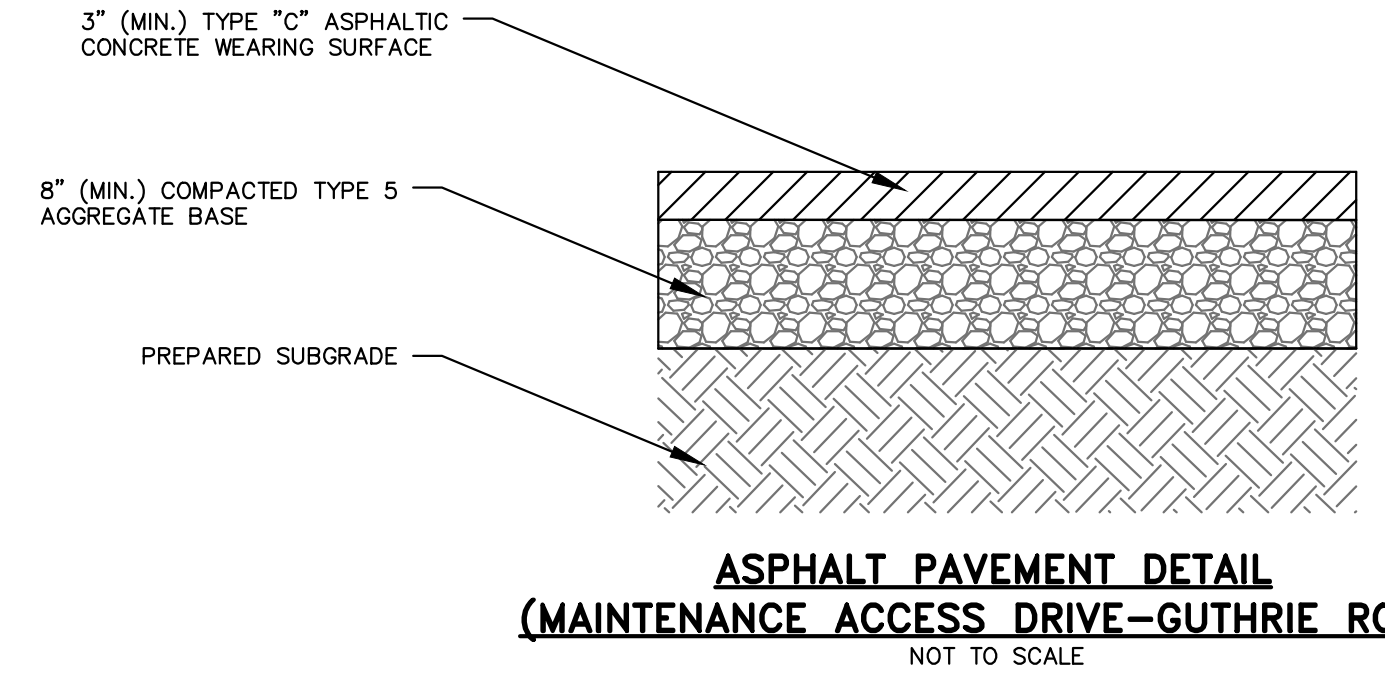
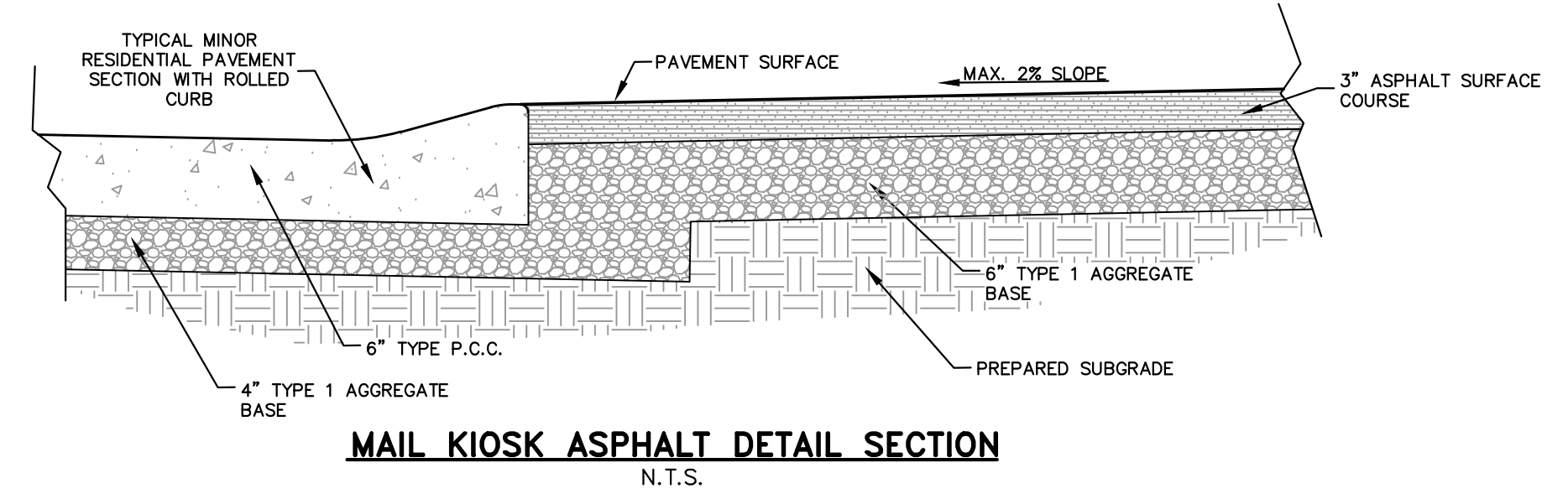
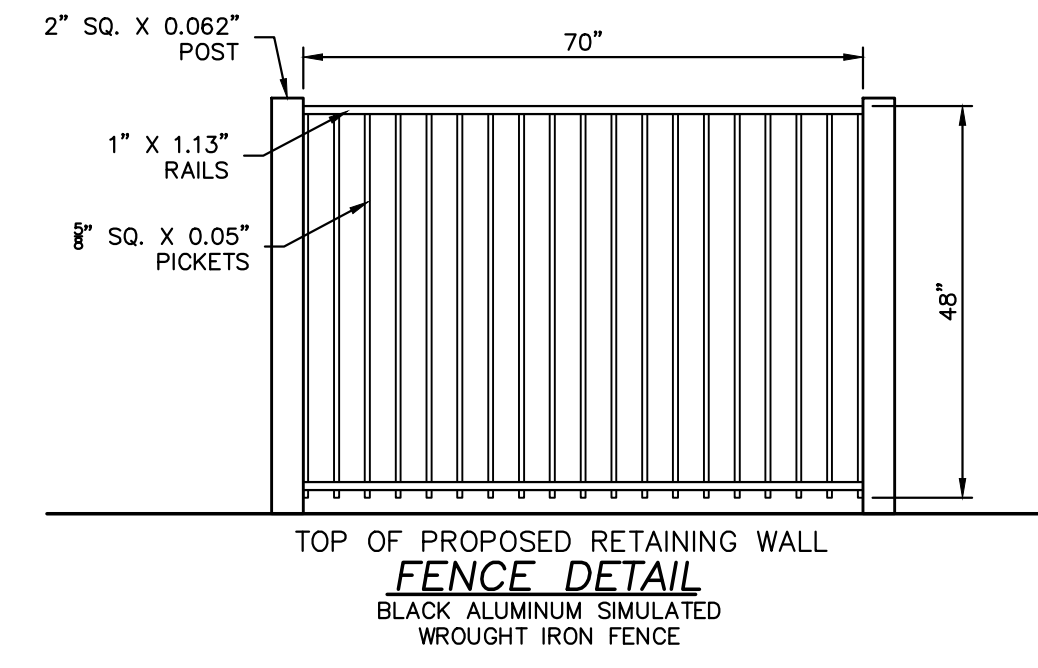
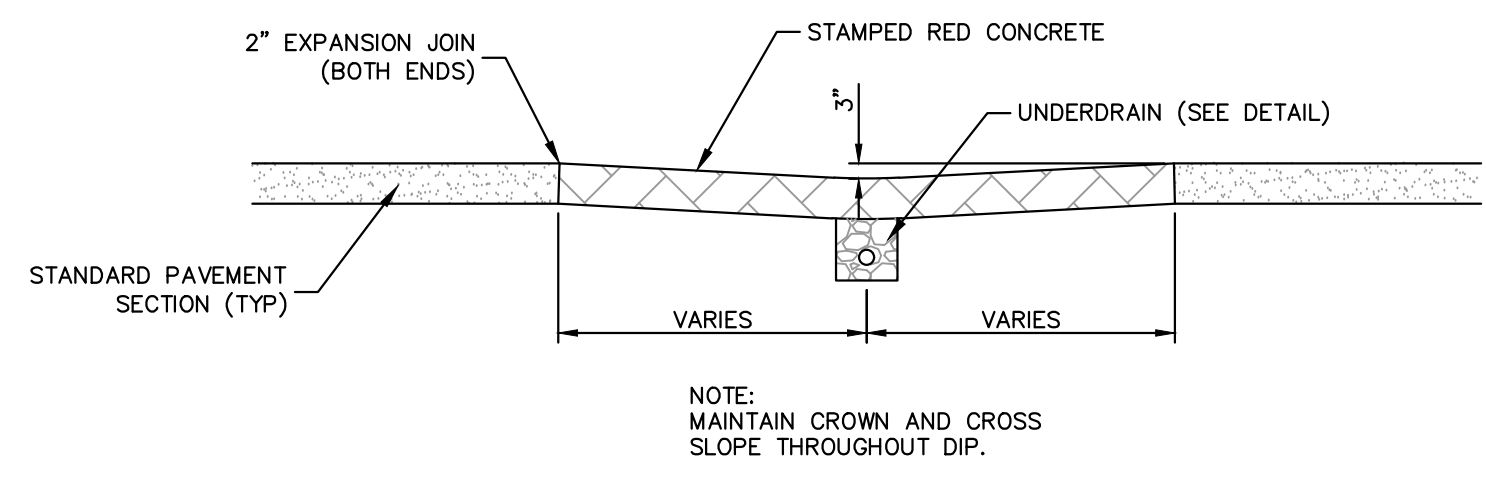
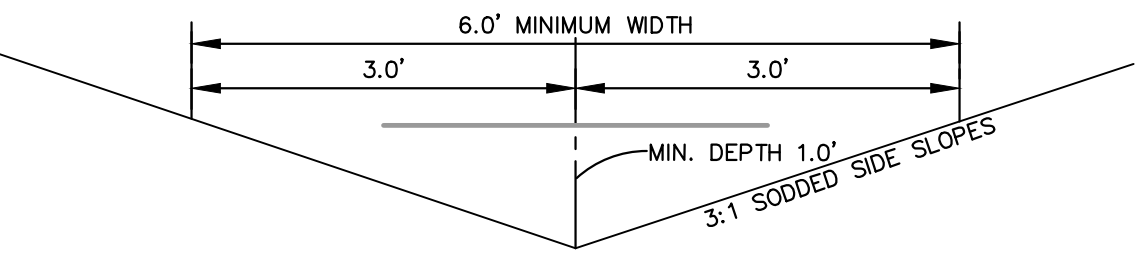
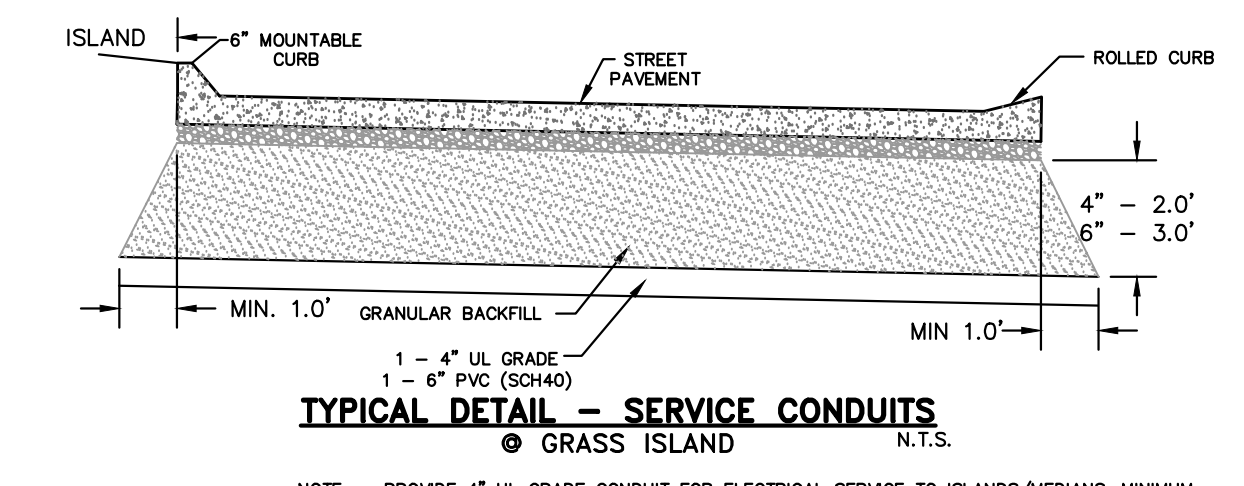
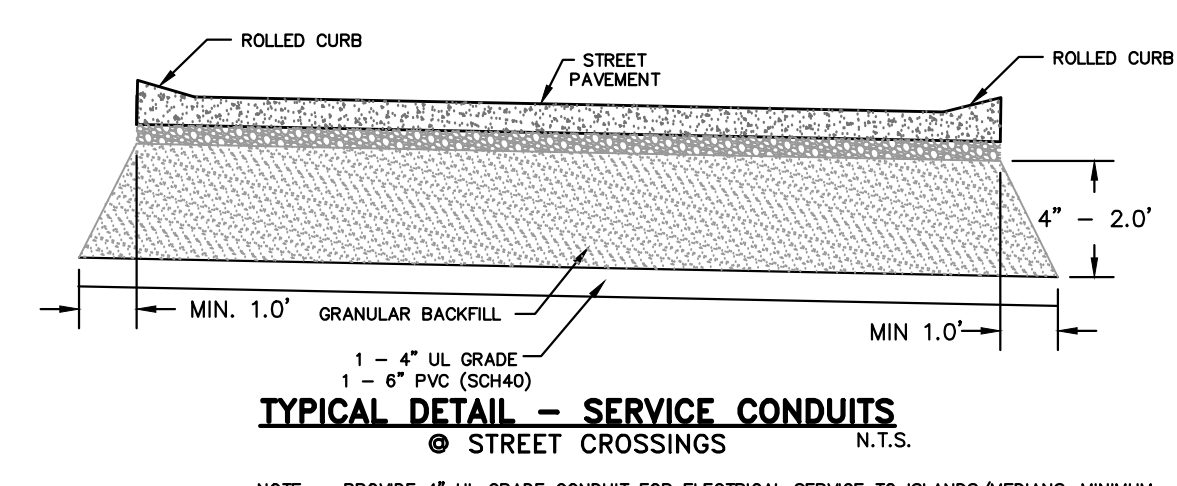
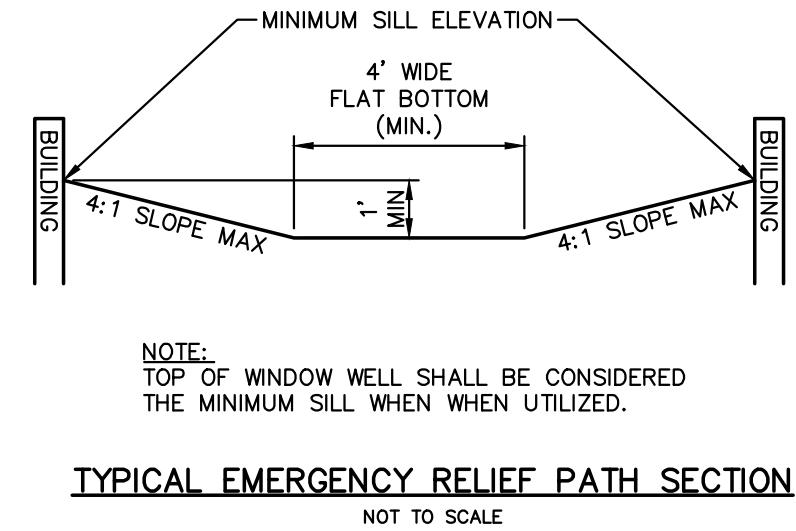
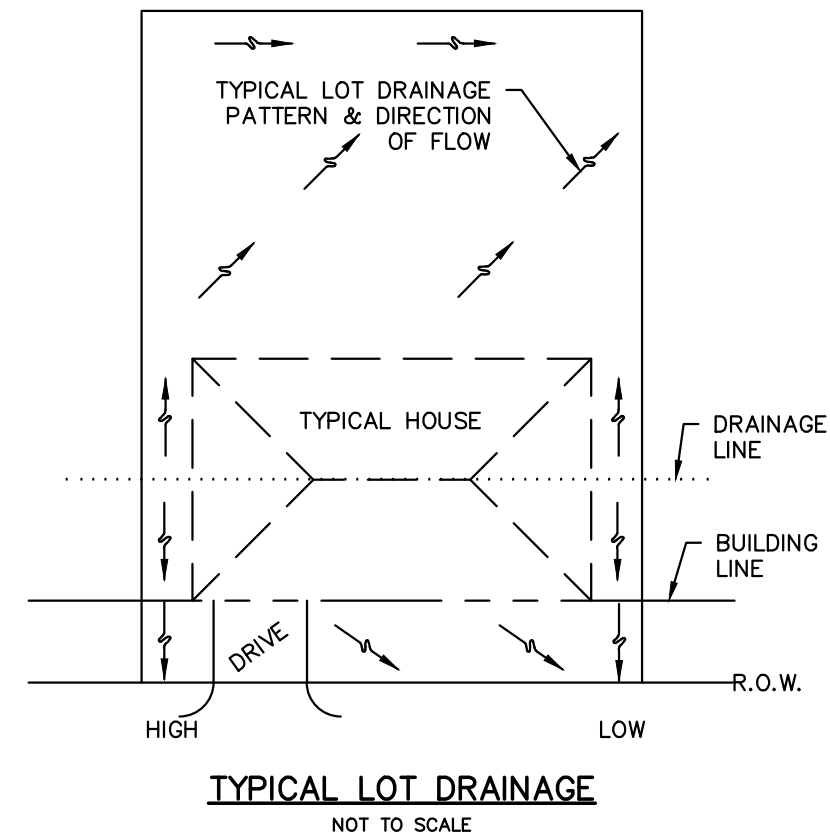


ISSUE	DATE / REMARKS
1	06/28/2017 Initial Submittal
2	10/06/2017 City Comments
3	11/10/2017 City Comments
4	12/16/2017 City Comments
5	01/11/2018 City Resubmittal

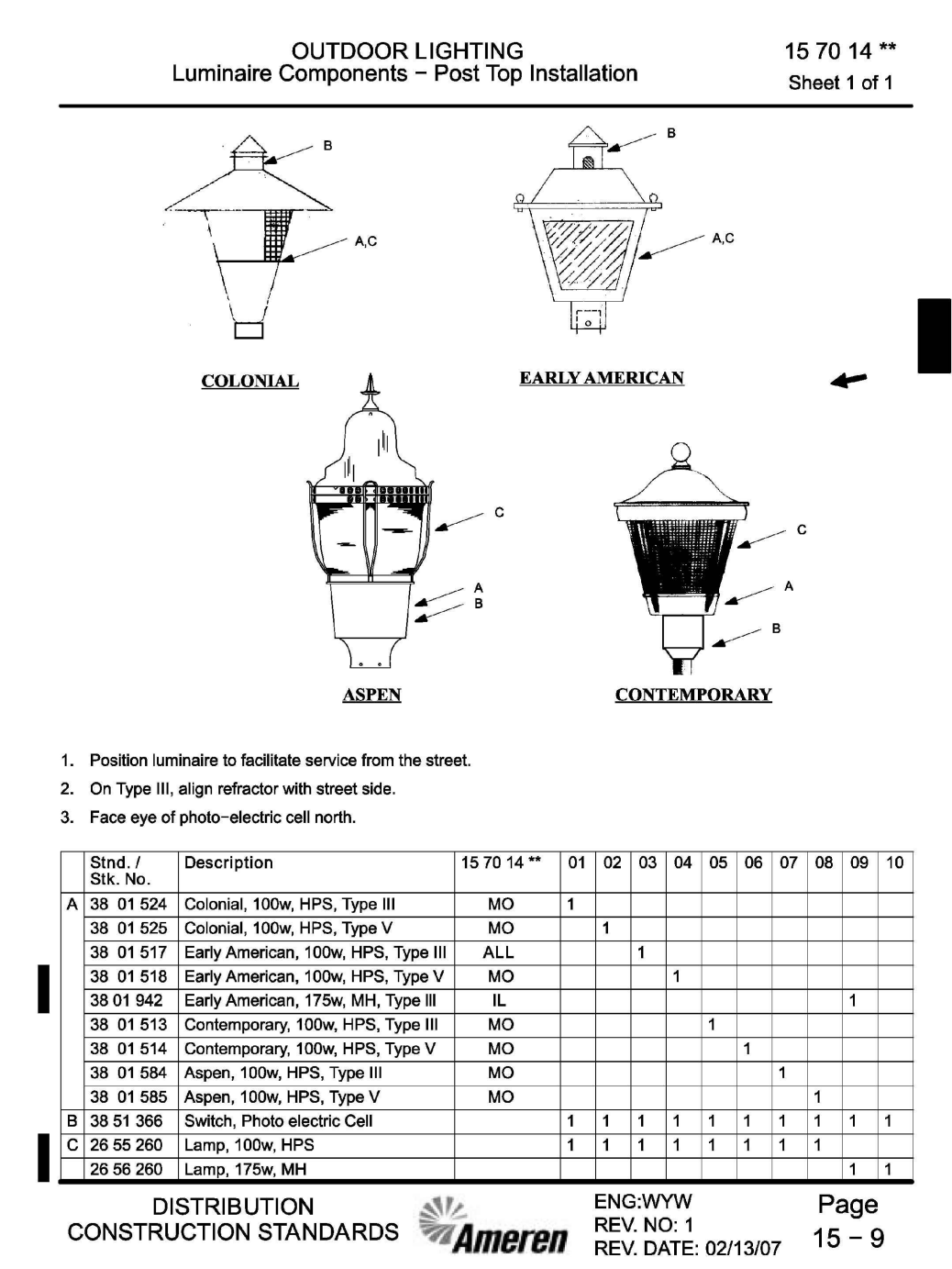
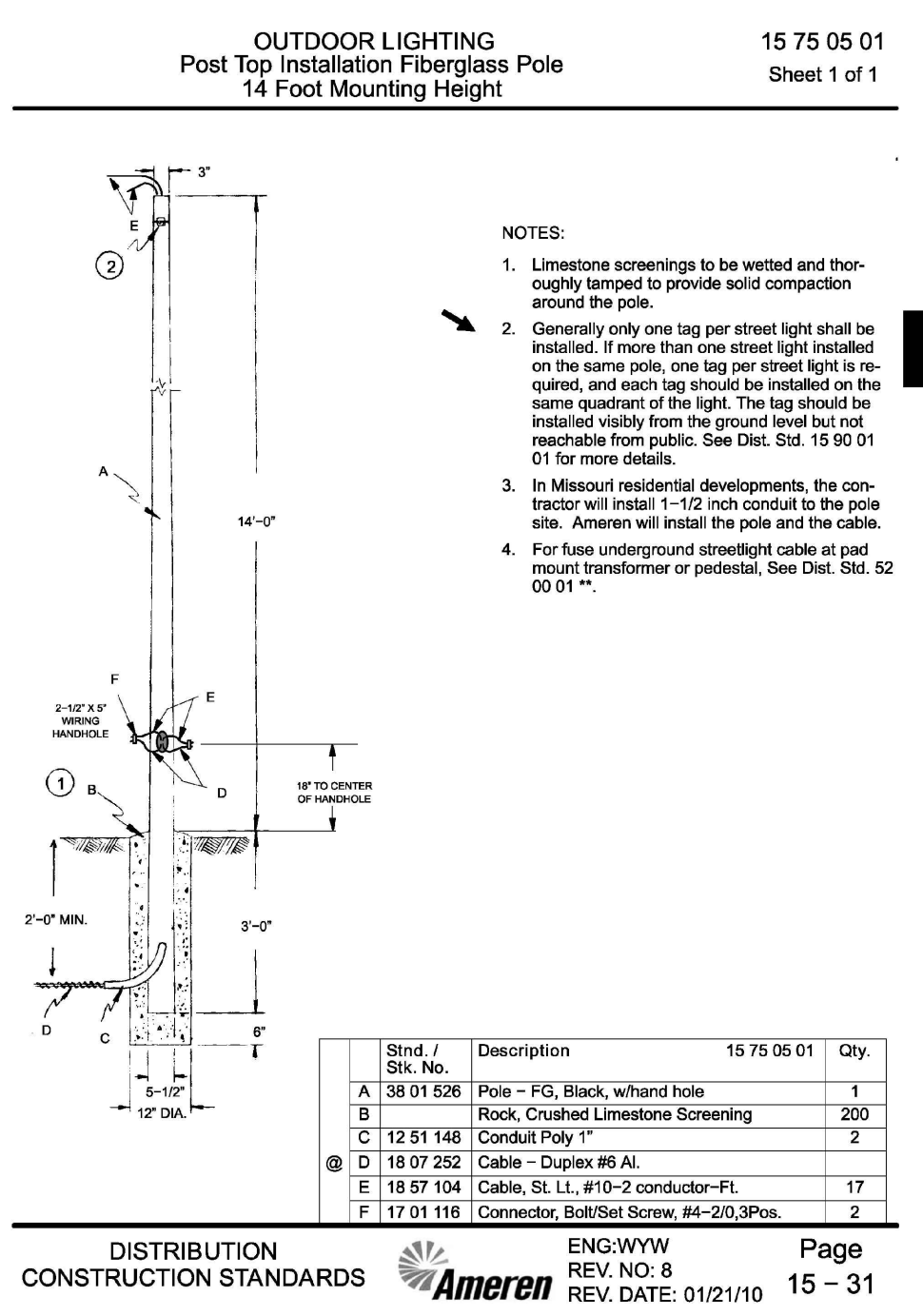
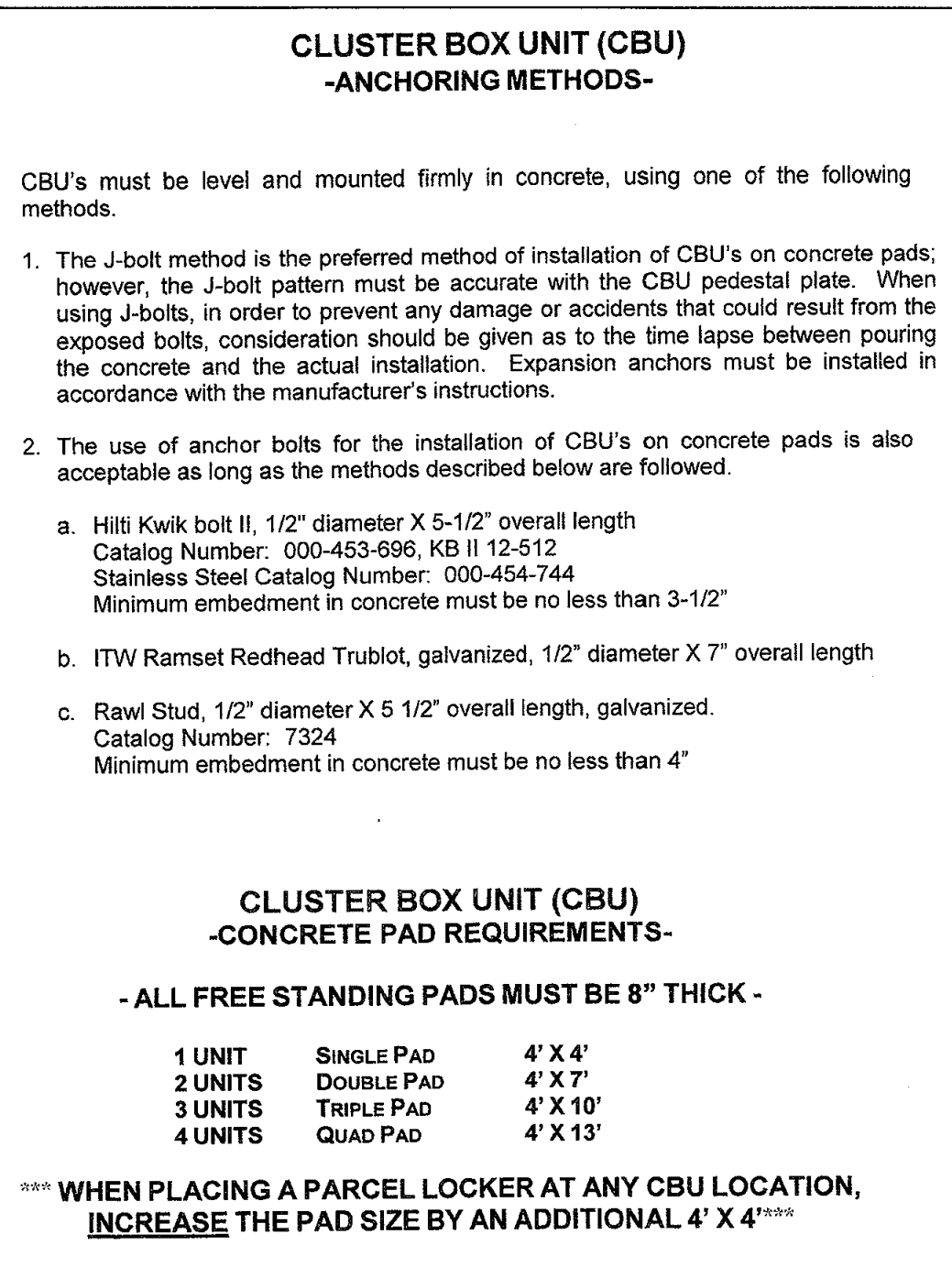
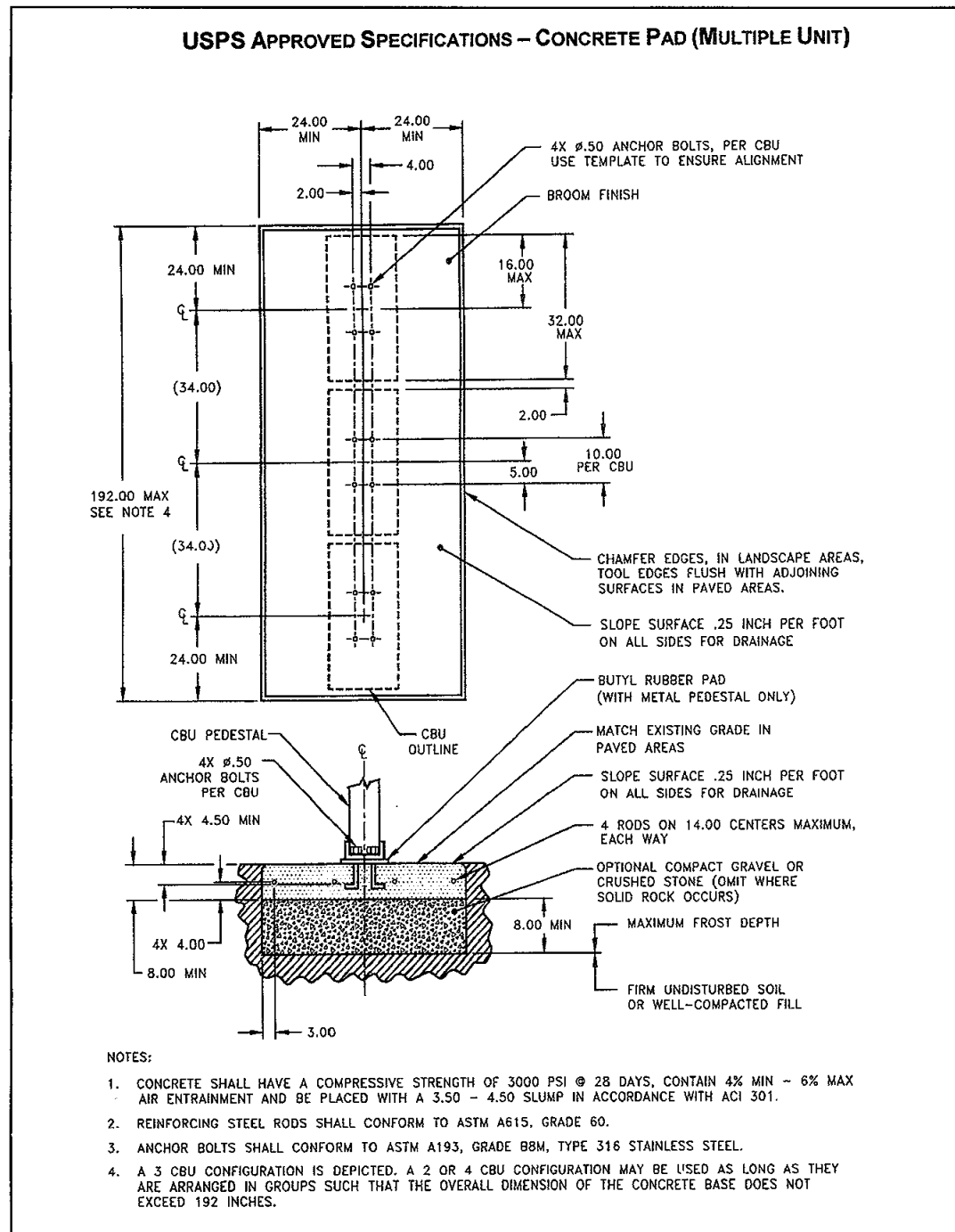
TYPICAL YARD SWALE

Maximum Discharge (Q) = 3.00 cfs
 Maximum Velocity (V) = 3.00 ft/sec
 N = 0.030 (grass)
 Maximum side slopes = 3 (horizontal) : 1 (vertical)

Longitudinal Slope (%)	Discharge (cfs)	Velocity (ft/sec)	Depth (ft)
0.5	3.00	1.73	0.76
1.0	3.00	2.23	0.67
2.0	3.00	2.87	0.59
3.0	1.99	3.00	0.47
4.0	1.30	3.00	0.38
5.0	0.92	3.00	0.32
6.0	0.70	3.00	0.28
7.0	0.52	3.00	0.24
8.0	0.43	3.00	0.22
9.0	0.36	3.00	0.20
10.0	0.32	3.00	0.19



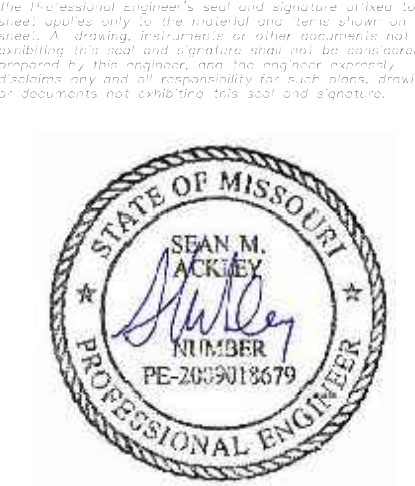
TYPICAL PAVEMENT DIP CROSS SECTION
NOT TO SCALE



Sheet /	Description	15 70 14 **	01	02	03	04	05	06	07	08	09	10
A	38 01 624 Colonial, 100w, HPS, Type III	MO	1									
B	38 01 525 Colonial, 100w, HPS, Type V	MO	1									
C	38 01 517 Early American, 100w, HPS, Type III	ALL										
D	38 01 518 Early American, 100w, HPS, Type V	MO	1									
E	38 01 942 Early American, 175w, MH, Type III	IL										
F	38 01 513 Contemporary, 100w, HPS, Type III	MO		1								
G	38 01 514 Contemporary, 100w, HPS, Type V	MO			1							
H	38 01 584 Aspen, 100w, HPS, Type III	MO						1				
I	38 01 585 Aspen, 100w, HPS, Type V	MO							1			
J	26 51 306 Switch, Photo electric Cell	MO	1	1	1	1	1	1	1	1	1	1
K	26 55 290 Lamp, 100w, HPS	MO	1	1	1	1	1	1	1	1	1	1
L	26 56 260 Lamp, 175w, MH	MO	1	1	1	1	1	1	1	1	1	1

PROJECT TITLE
Brookview
OFF FALLON, MISSOURI

THE STERLING CO.
ENGINEERS & SURVEYORS
5055 New Baumgartner Road
St. Louis, Missouri 63129
Ph 314-487-0440 Fax 314-487-8944
www.sterling-eng-sur.com
Corporate Certificate of Authority #001348



Date: 01/11/18
SEAN ACKLEY
LICENSE # PE-2009018679
Civil Engineer

McBride Guthrie, LLC
16091 Swingley Ridge Road, Suite 300
Chesterfield, Missouri 63017
Ph: (636) 537-2000
Fax (636) 537-2546

P-Z No. 17-005894
City No. 17-008288
Date: 01/11/18
Job No. 17-02-041

Page No.
13.3
IMP