

CITY OF OFFALLON STORM SEWER SHOP DRAWING NOTE:

ALL STRUCTURES WITH MULTIPLE INCOMING PIPES WILL REQUIRE SHOP DRAWINGS TO VERIFY THAT THE PIPES WILL FIT PROPERLY INTO THE STRUCTURES. THE SHOP DRAWINGS SHALL BE PROVIDED TO THE ENGINEER OF RECORD AND THE CITY OF OFFALLON FOR REVIEW PRIOR TO FABRICATION.



ENGINEERS AUTHENTICATION
The responsibility for all professional engineering activities on this project is hereby limited to the set of plans authorized by the seal, signature, and date hereunder attached. Responsibility is disclaimed for all other engineering plans involved in this project and specifically excludes revisions after the date hereunder authenticated.
STEVEN D. MARKOV, P.E.
PROFESSIONAL ENGINEER
PE 2200007195

NOLES PROPERTIES LLC
BRYAN ROAD COMMERCIAL DEVELOPMENT
TBD BRYAN ROAD
OFFALLON, MO 63376
NOLES PROPERTIES LLC
11361 OLIVE BLVD
CREVE COEUR, MO 63141

#	Revision Date	Description of Changes
1	6/26/2023	REVISED PER CITY OF OFFALLON AND OFFALLON FIRE COMMENTS
2	7/17/2023	REVISED PER CITY OF OFFALLON COMMENTS
3	7/17/2023	REVISED PER CITY OF OFFALLON COMMENTS

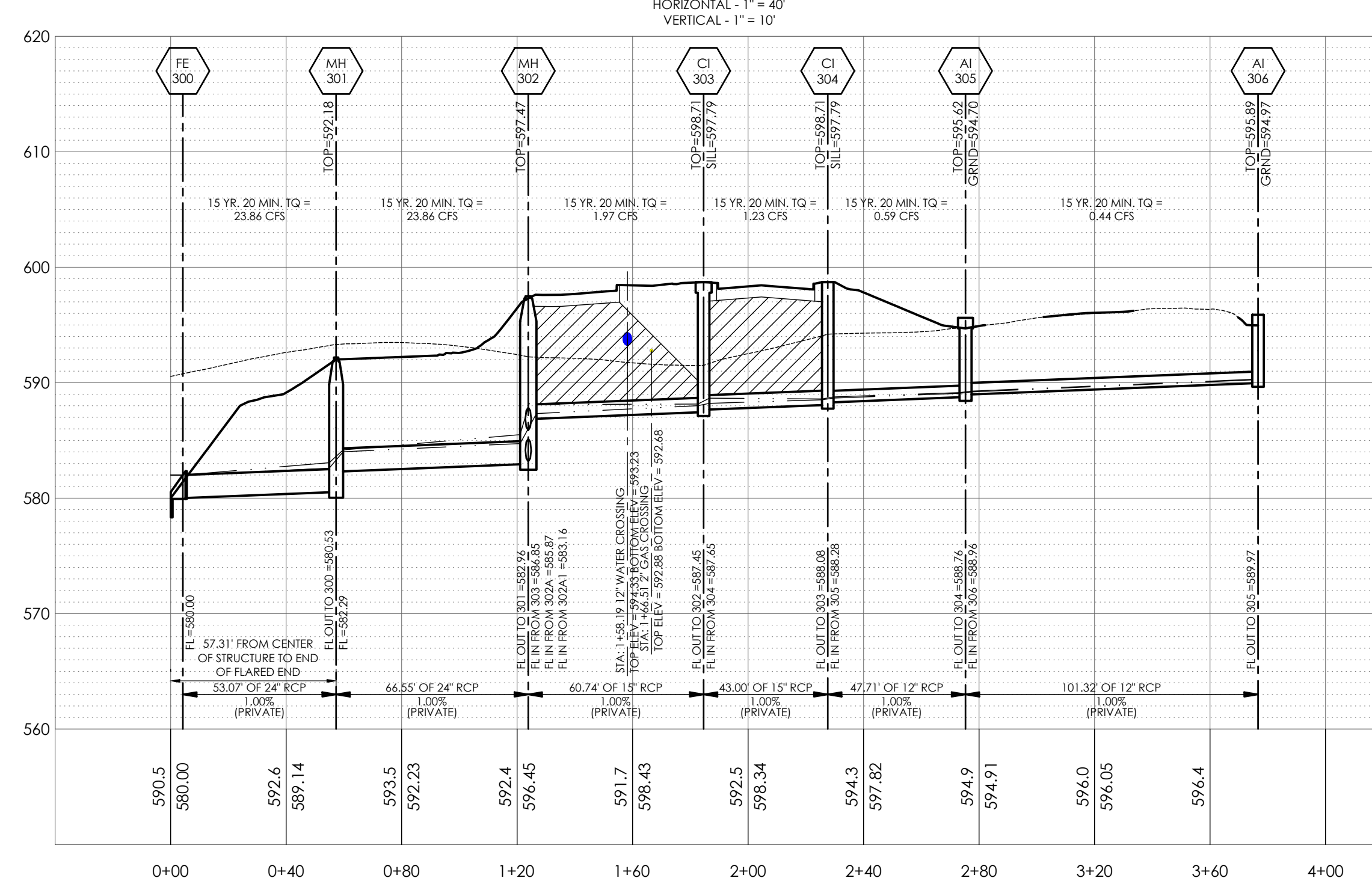
Date: 5/2/2023

Sheet Title: STORM SEWER PROFILES

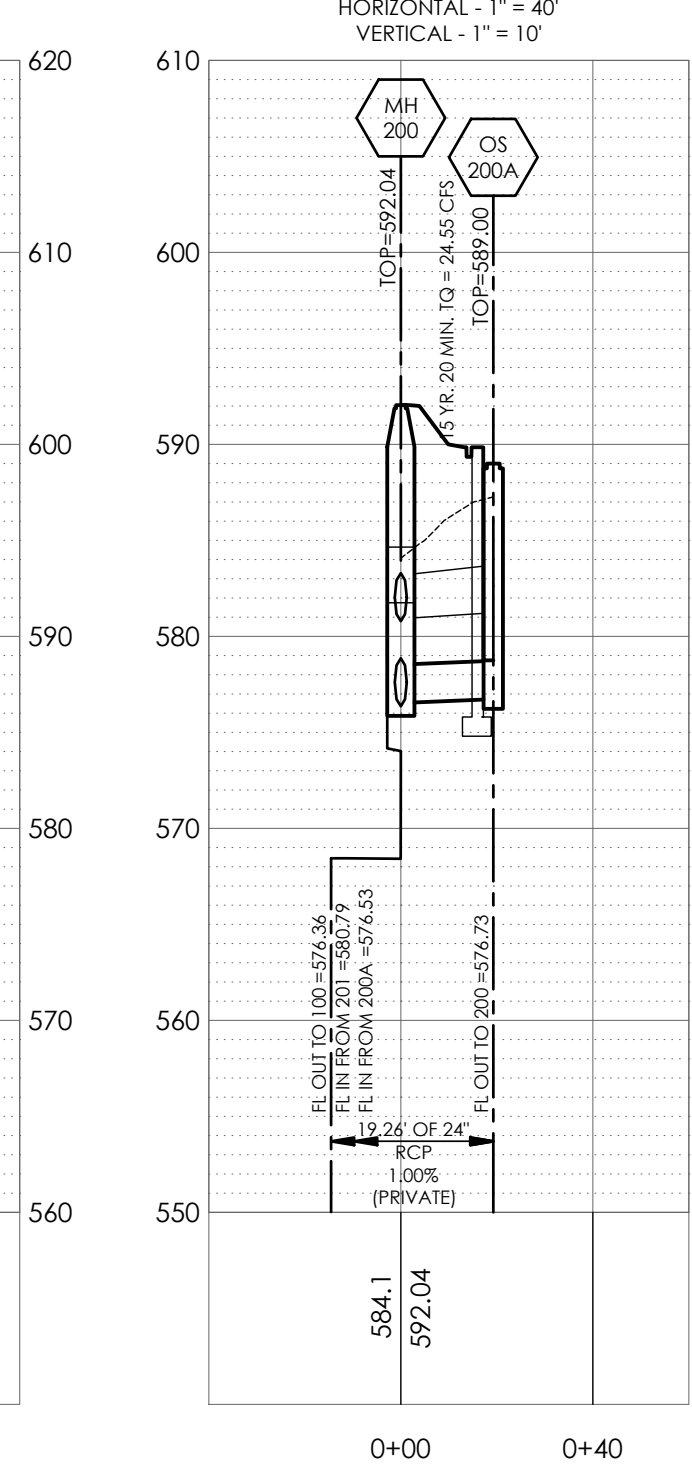
Project No.: 2202920
Drawn By: P. HEITZ
Checked By: M. FOGARTY

ISSUED FOR CONSTRUCTION

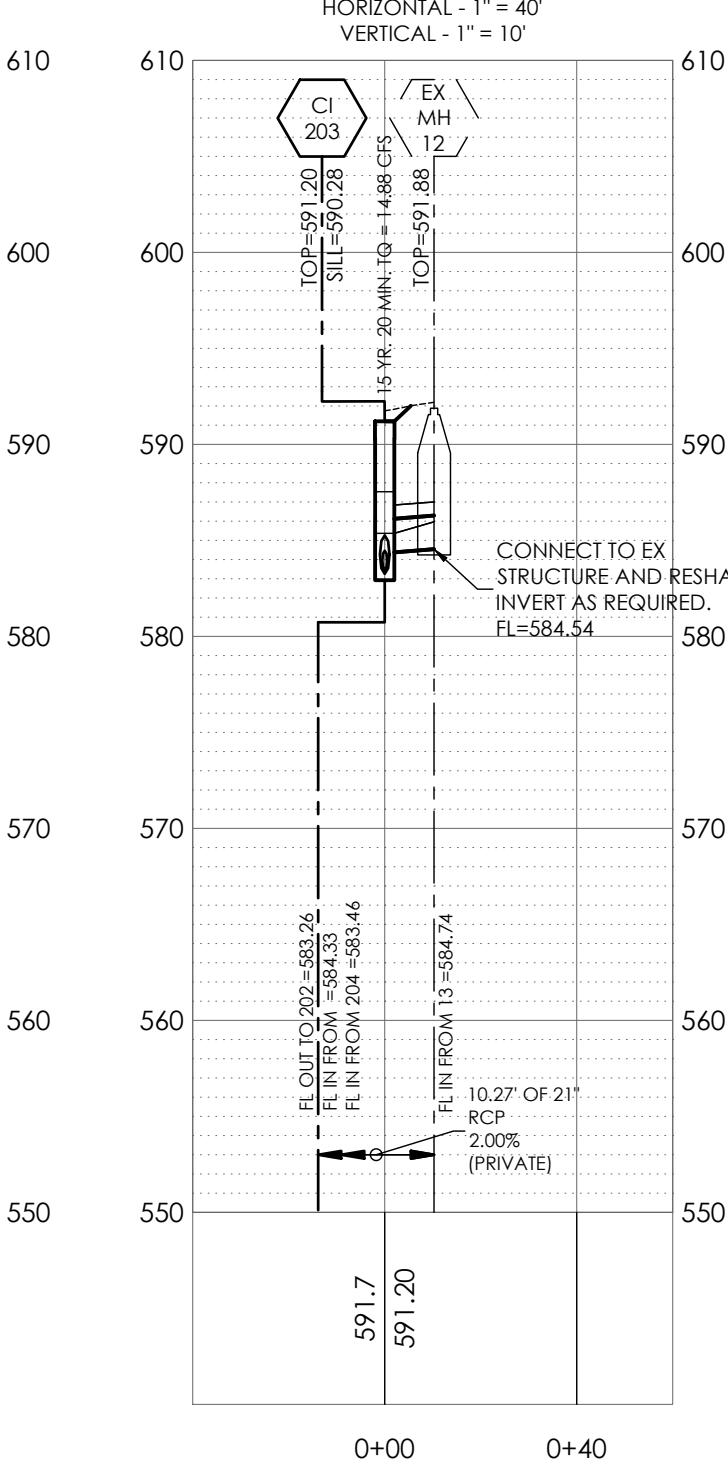
306-300 STORM SEWER PROFILE



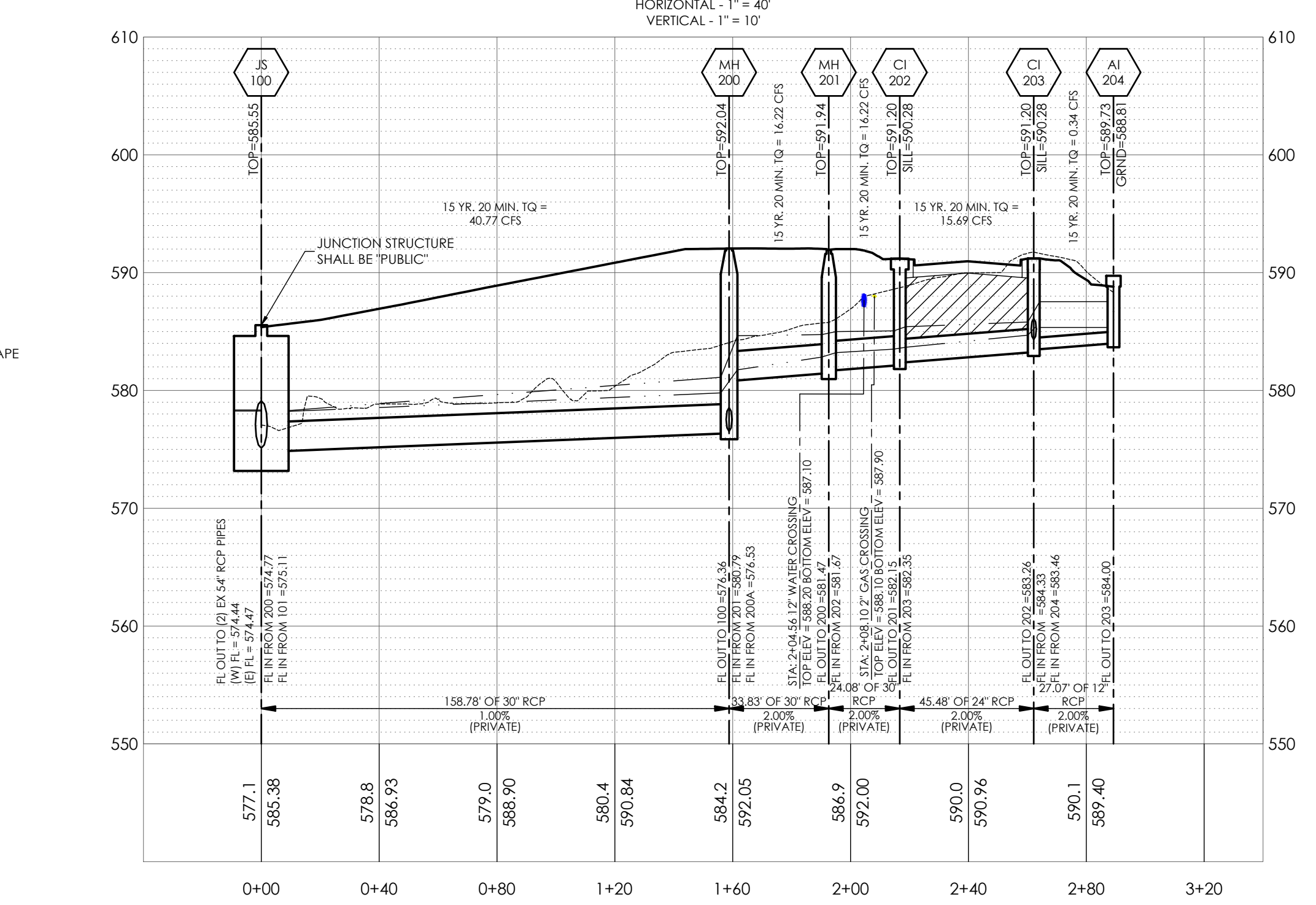
200A-200 STORM SEWER PROFILE



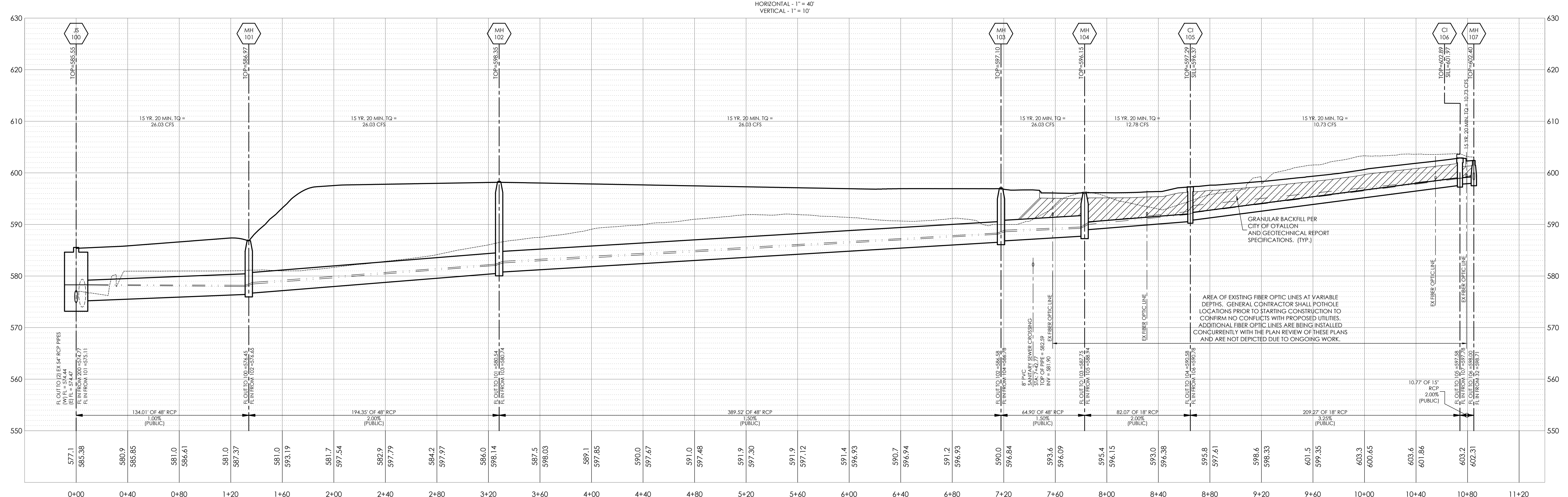
12-203 STORM SEWER PROFILE



204-100 STORM SEWER PROFILE



107-100 STORM SEWER PROFILE



C-600