

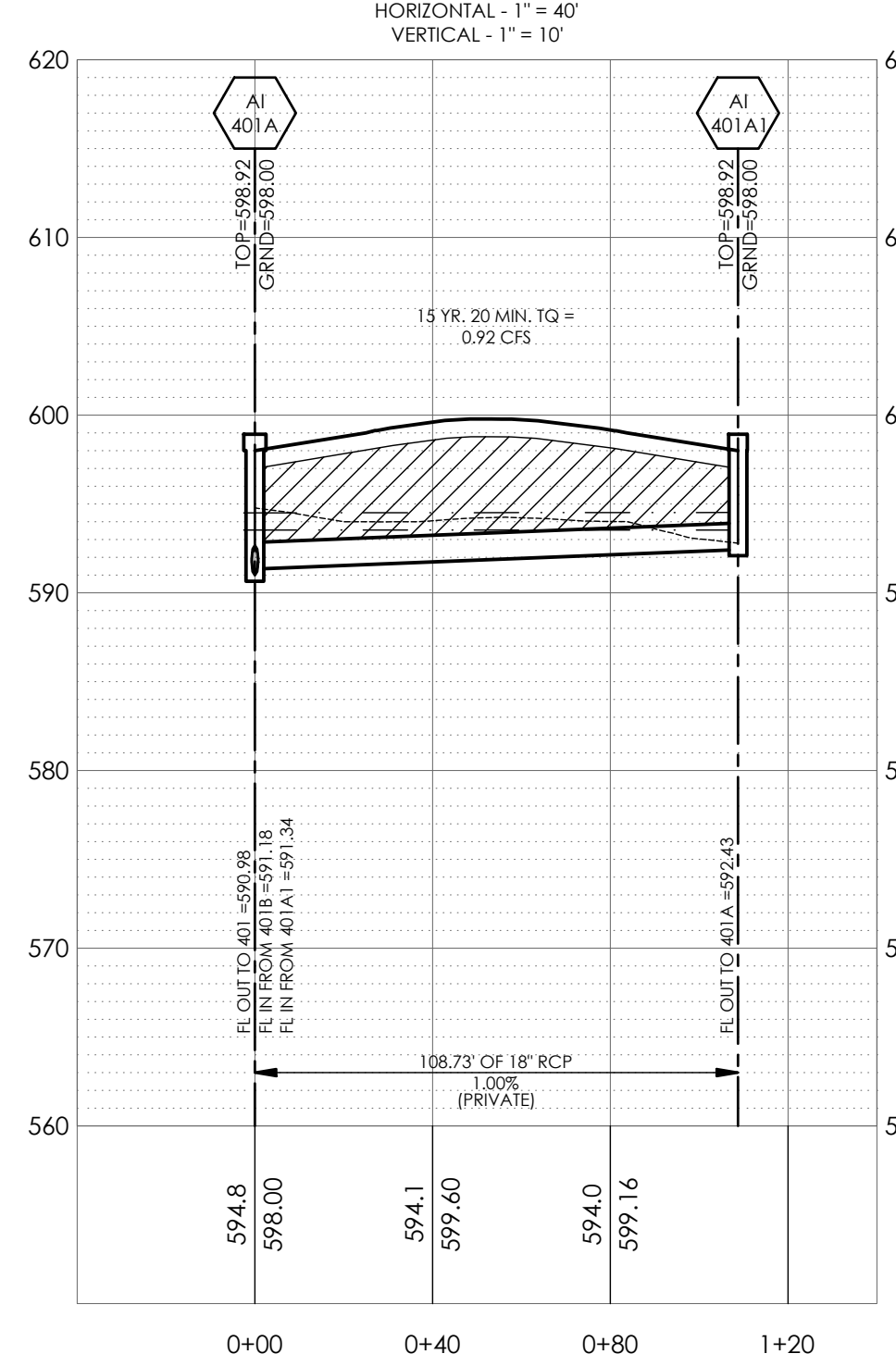
CITY OF OFFALLON STORM SEWER SHOP DRAWING NOTE:

ALL STRUCTURES WITH MULTIPLE INCOMING PIPES WILL REQUIRE SHOP DRAWINGS TO VERIFY THAT THE PIPES WILL FIT PROPERLY INTO THE STRUCTURES. THE SHOP DRAWINGS SHALL BE PROVIDED TO THE ENGINEER OF RECORD AND THE CITY OF OFFALLON FOR REVIEW PRIOR TO FABRICATION.

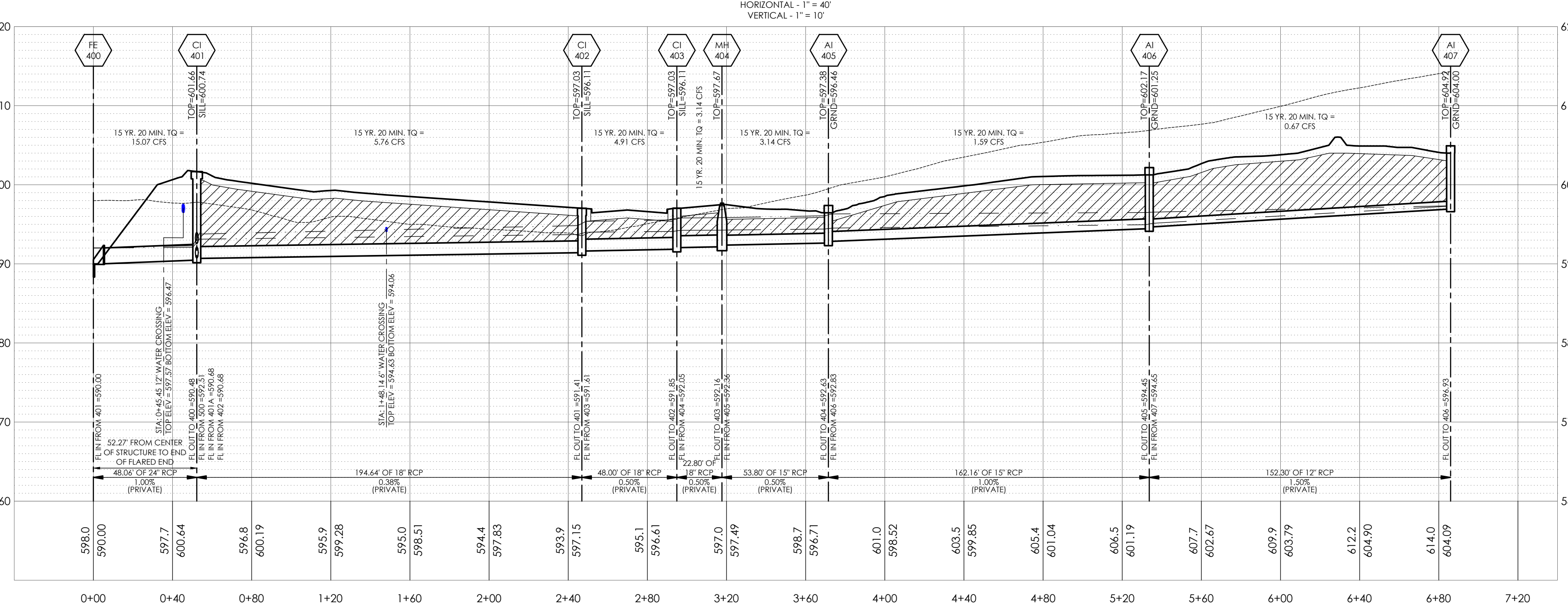


ENGINEERS AUTHENTICATION
The responsibility for all professional engineering activities on this project is hereby limited to the set of plans authorized by the seal, signature, and date hereon attached. Responsibility is disclaimed for all other engineering plans involved in this project and specifically excludes revisions after the date hereon authenticated.
STEVEN D. MARSTON, P.E.
PROFESSIONAL ENGINEER
PE 220007195

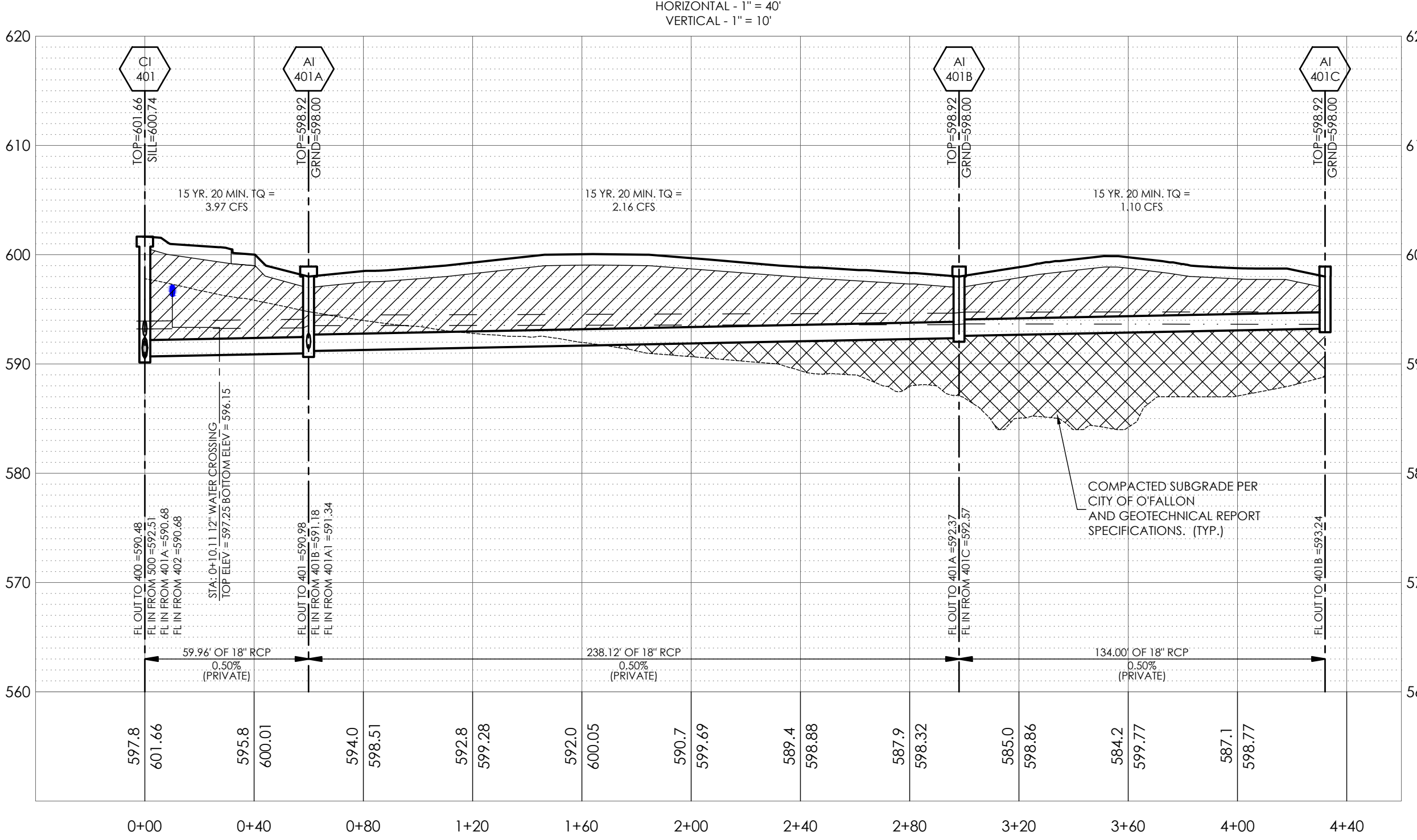
401A1-401A STORM SEWER PROFILE



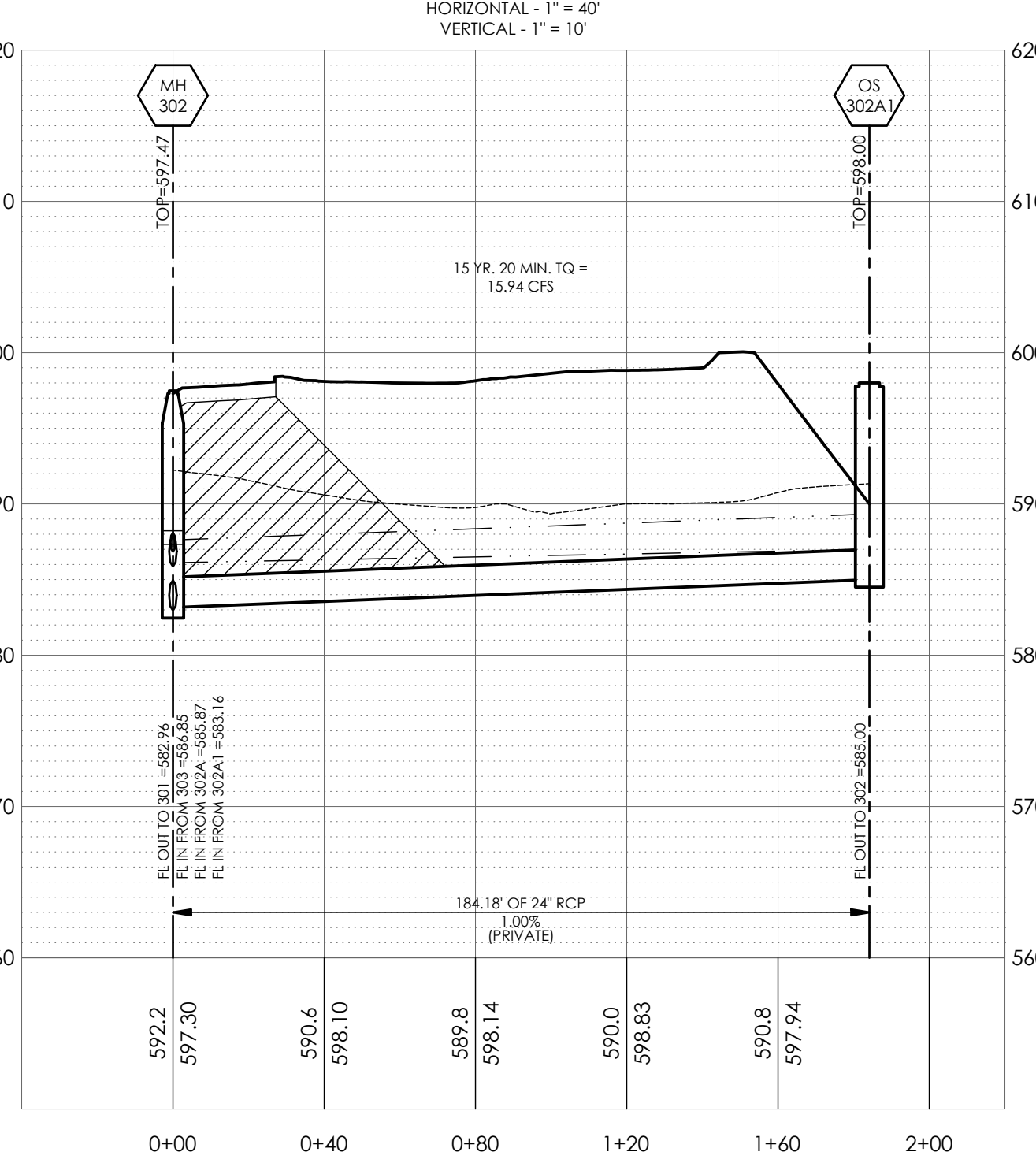
407-400 STORM SEWER PROFILE



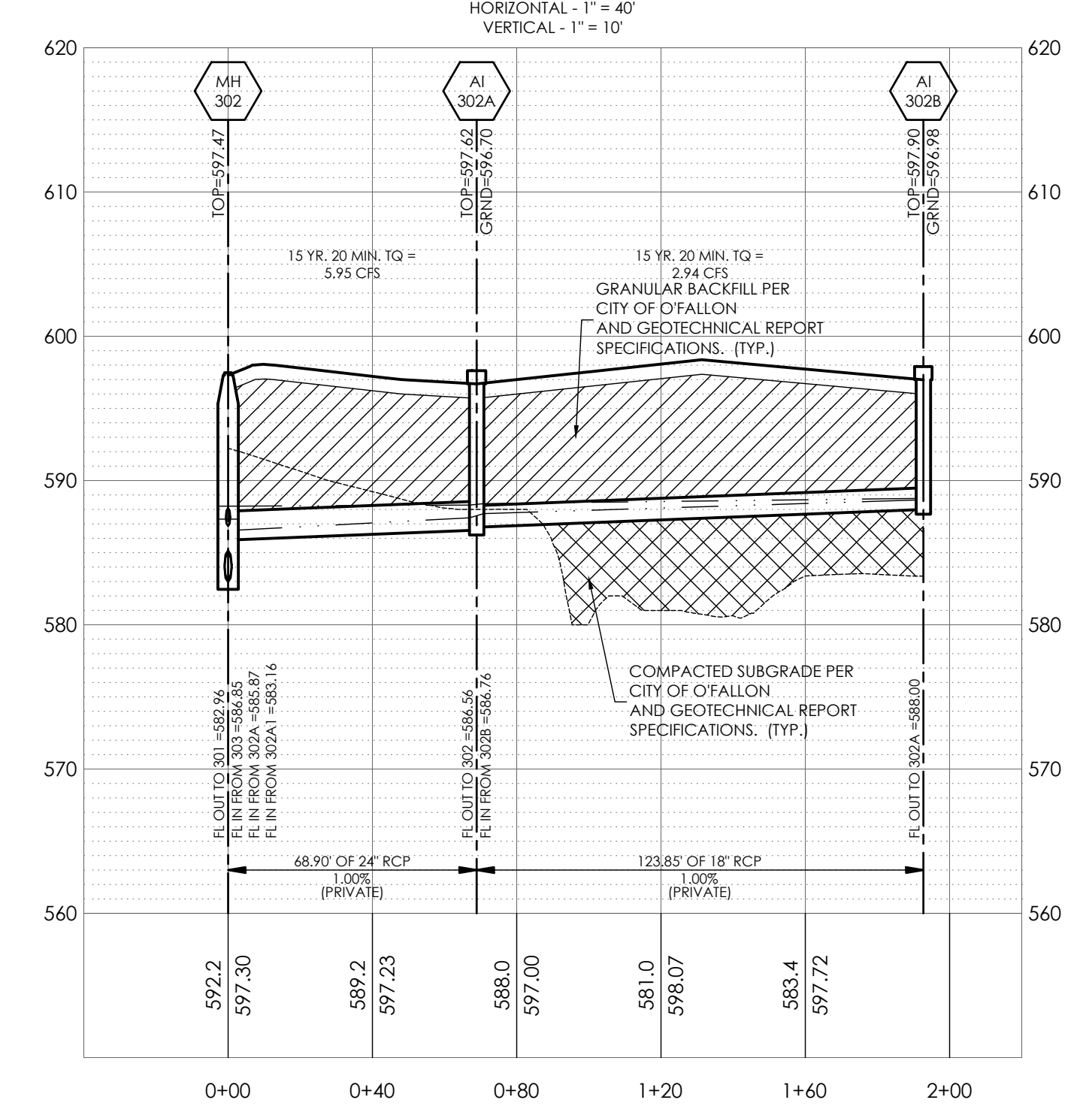
401C-401 STORM SEWER PROFILE



302A1-302 STORM SEWER PROFILE



302B-302 STORM SEWER PROFILE



NOLES PROPERTIES LLC
BRYAN ROAD COMMERCIAL DEVELOPMENT

TBD BRYAN ROAD
OFFALLON, MO 63376
NOLES PROPERTIES LLC
11361 OLIVE BLVD
CREVE COEUR, MO 63141

#	Revision Date	Description of Changes
1	6/26/2023	REVISED PER CITY OF OFFALLON AND OFFALLON FIRE COMMENTS
2	7/17/2023	REVISED PER CITY OF OFFALLON COMMENTS
3	7/17/2023	REVISED PER CITY OF OFFALLON COMMENTS

Date: 5/2/2023

Sheet Title: STORM SEWER PROFILES

Project No: 2202920
Drawn By: P. HEITZ
Checked By: M. FOGARTY

ISSUED FOR CONSTRUCTION

C-601