

CITY OF OFFALLOM STORM SEWER SHOP DRAWING NOTE:

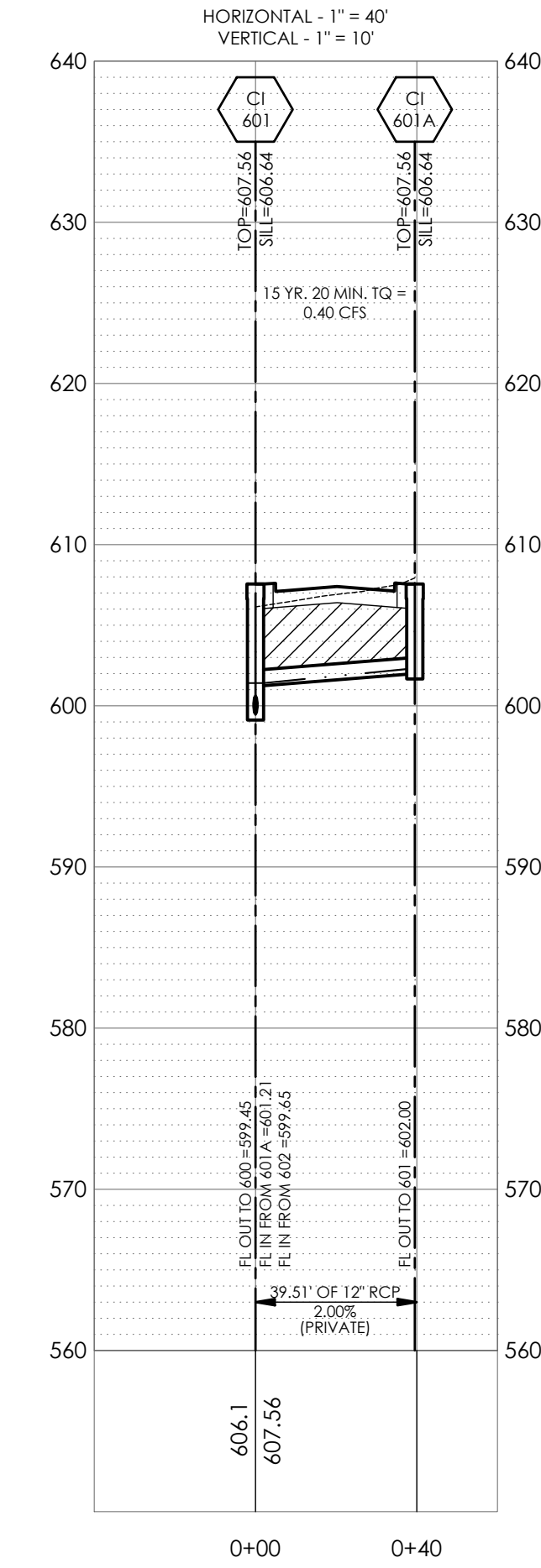
ALL STRUCTURES WITH MULTIPLE INCOMING PIPES WILL REQUIRE SHOP DRAWINGS TO VERIFY THAT THE PIPES WILL FIT PROPERLY INTO THE STRUCTURES. THE SHOP DRAWINGS SHALL BE PROVIDED TO THE ENGINEER OF RECORD AND THE CITY OF OFFALLOM FOR REVIEW PRIOR TO FABRICATION.



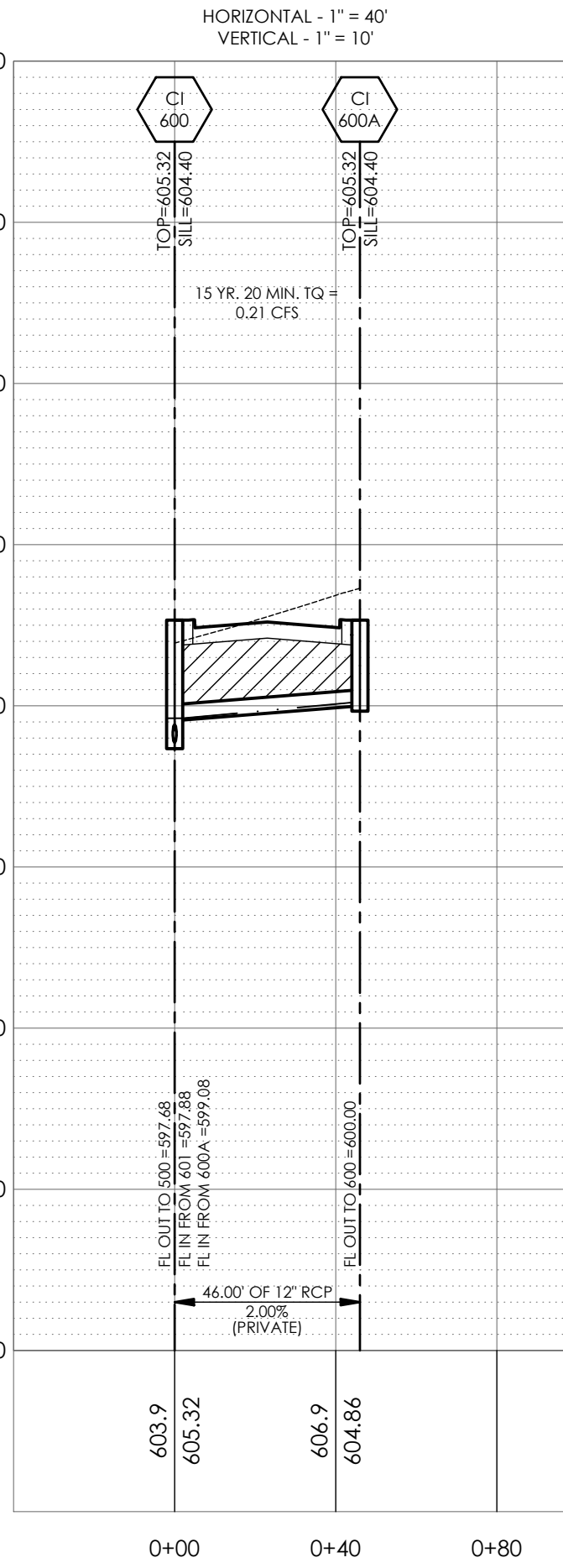
ENGINEERS AUTHENTICATION
The responsibility for all professional engineering liability on this project is hereby limited to the set of plans authorized by the seal, signature, and date hereunder attached. Responsibility is disclaimed for all other engineering plans involved in this project and specifically excludes revisions after the date stated hereunder.

STEVEN D. MARSTON P.E.
PROFESSIONAL ENGINEER
PE 220007195

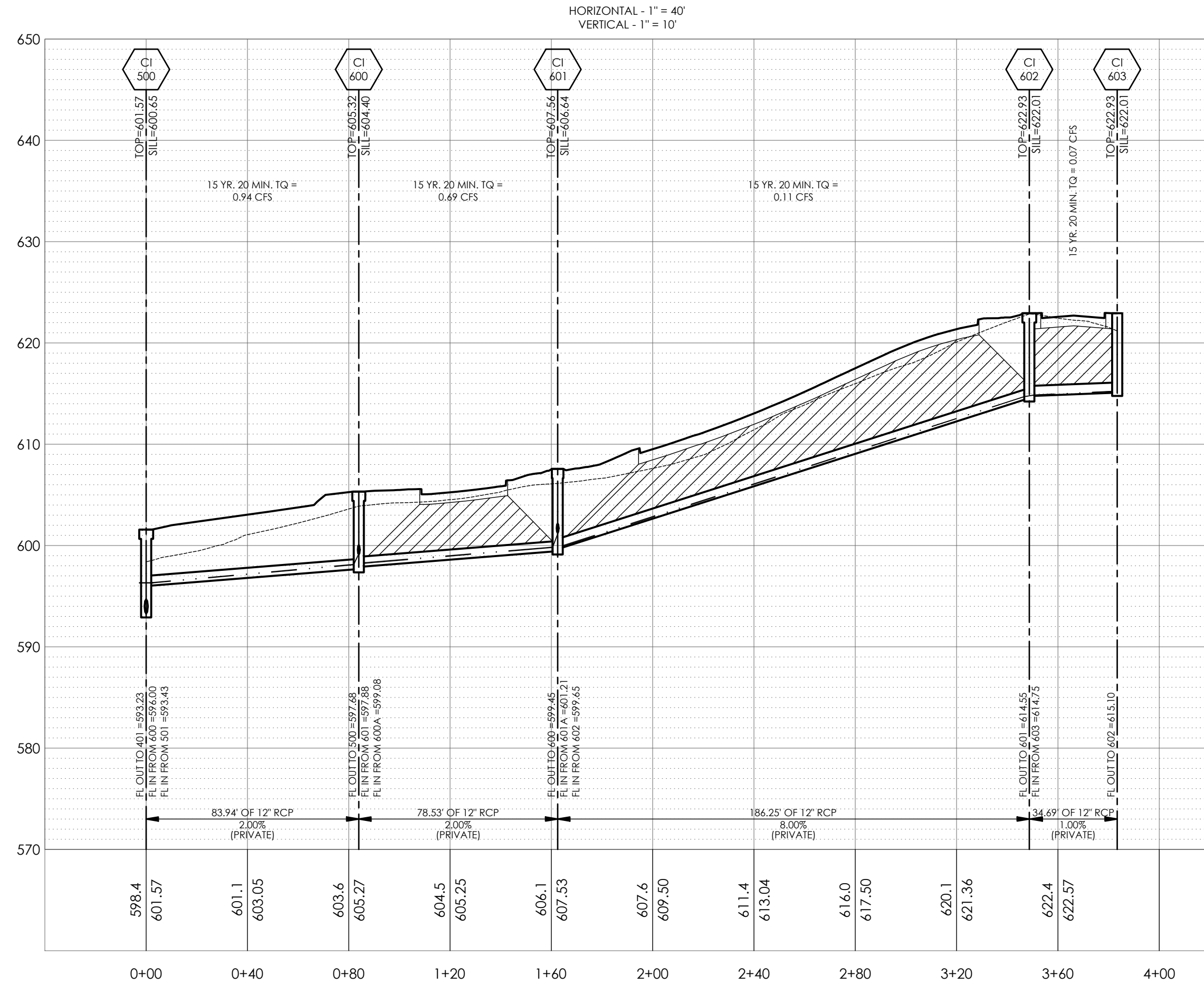
601A-601 STORM SEWER PROFILE



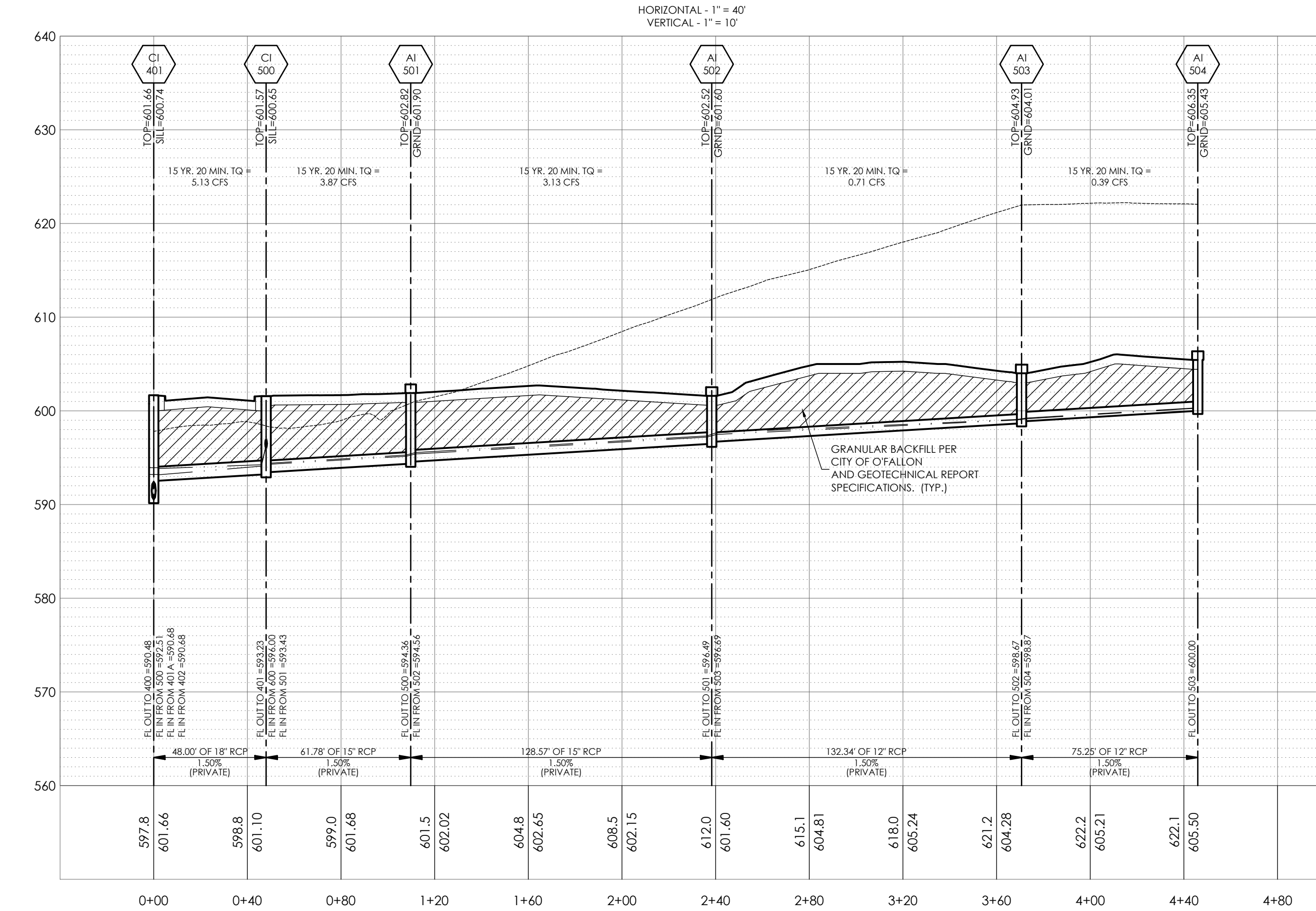
600A-600 STORM SEWER PROFILE



603-500 STORM SEWER PROFILE



504-401 STORM SEWER PROFILE



NOLES PROPERTIES LLC
BRYAN ROAD COMMERCIAL DEVELOPMENT
BRYAN ROAD
OFFALLOM, MO 63376
NOLES PROPERTIES LLC
11361 OLIVE BLVD
CREVE COEUR, MO 63141

Project: **BRYAN ROAD COMMERCIAL DEVELOPMENT**
Date: **5/2/2023**

#	Revision Date	Description of Changes
1	6/26/2023	REVISED PER CITY OF OFFALLOM AND OFFALLOM FIRE COMMENTS
2	7/17/2023	REVISED PER CITY OF OFFALLOM COMMENTS
3	7/17/2023	REVISED PER CITY OF OFFALLOM COMMENTS

Sheet Number: **C-602**

Project No: **2202920**
Drawn By: **P. HEITZ**
Checked By: **M. FOGARTY**

ISSUED FOR CONSTRUCTION

STORM SEWER PROFILES