

GENERAL NOTES:

- 1.0% MINIMUM, 2.0% MAXIMUM CROSS SLOPE.
- VARIABLE HEIGHT VERTICAL CURB - IF TRAVERSABLE USE A MAX. 1V:10H FLARE MEASURED PARALLEL TO THE CURB LINE.
- HEIGHT VARIES TO MEET EXISTING GROUND.
- THE COUNTER SLOPE OF THE GUTTER OR STREET AT THE FOOT OF CURB RAMP RUNS, BLENDED TRANSITIONS, AND TURNING SPACES SHALL BE 5% MAXIMUM.
- THE FACE OF PEDESTRIAN PUSH BUTTONS SHALL BE OFFSET 6" FOR FRONT APPROACH AND 10" MAX. FOR SIDE APPROACH TO THE CURB FACE.
- BEYOND THE BOTTOM GRADE BREAK, A CLEAR SPACE 4' X 4' MINIMUM SHALL BE PROVIDED WITHIN THE WIDTH OF THE PEDESTRIAN STREET CROSSING AND WHOLLY OUTSIDE THE PARALLEL VEHICLE TRAVEL LANE.

MISSOURI HIGHWAYS AND TRANSPORTATION COMMISSION

JEFFERSON CITY, MO 65102
1-888-ASK-MODOT (1-888-275-6636)

CURB RAMPS

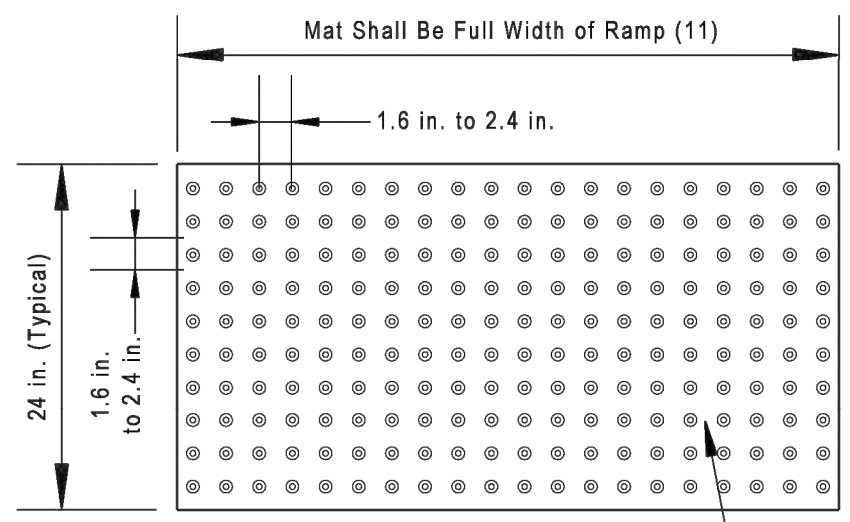
DATE EFFECTIVE: 01/01/2023
DATE PREPARED: 10/15/2022

608.50A

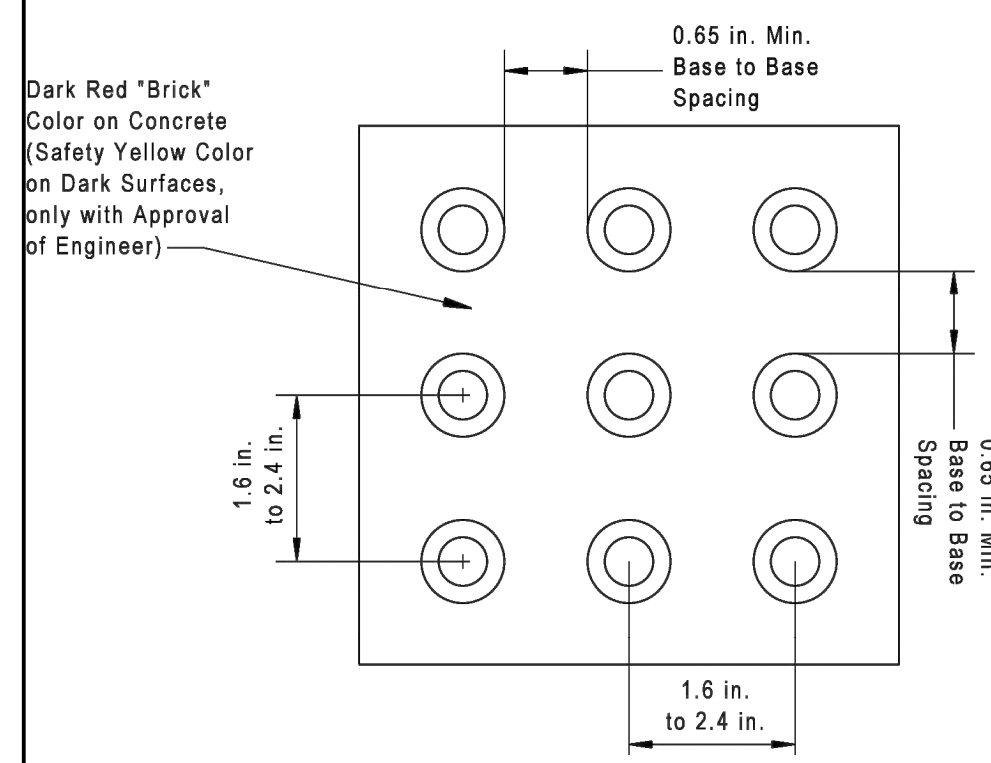
SHEET NO. 3 OF 4

General Notes

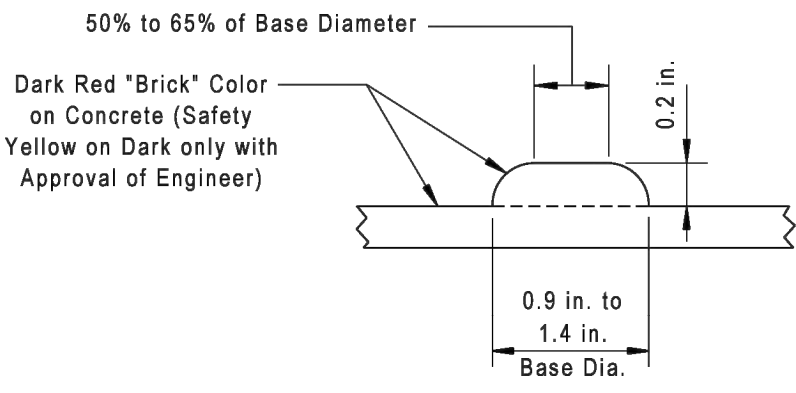
- Do not scale drawings, follow dimensions.
- Detectable warning surfaces (truncated domes) shall be preformed and installed as per manufacturer's recommendations. Stamped concrete will not be accepted.
- All material shall be obtained from a source identified on the Missouri Department of Transportation "Qualified Lists". Specifically, Qualified Truncated Domes, FS-1057 Table 1
- The detectable warning surface shall contrast visually with adjoining surfaces. Either light-on-dark or dark-on-light.
- Truncated dome surfaces shall extend a minimum of 24 inches in the direction of sidewalk travel and the full width of the curb ramp (exclusive of flares), the landing, or blended transition. The panels shall be made of a durable material. The panels shall carry a manufacturer warranty covering all defects for a five-year period from the time of installation.
- Detectable warning surfaces shall be aligned perpendicular or radial to the break between the ramp. Landing or blended transition. And the street.
- Domes shall have a base diameter of 0.9 to 1.4 inches. The top diameter shall be 50 to 65 percent of the base diameter. The dome height shall be 0.2 inches. Dome center-to-center spacing shall be 1.6 to 2.4 inches with a minimum base-to-base spacing of 0.65 inches. Stamped concrete will not be accepted.
- The contractor and/or manufacturer must provide a performance warranty on the product and installation of the Detectable Warning Surface for a minimum period of 1-year from the date of project acceptance or installation (whichever date is later). The performance warranty shall guarantee that the Detectable Warning Surface is free from defects in workmanship and material including deformation, breakage, excessive wearing or breakage of truncated domes, color fastness, delamination, or attachment to pavement surface.
- Truncated dome mats applied with adhesive may be used for retrofit of existing curb ramps only
- Contractors or manufacturers shall at the request of this Department, provide product literature, installation procedures, maintenance instructions, detectable warning surface samples (minimum 12 in. x 12 in.), current test reports in accordance with ASTM guidelines, and possible test installation by the contractor or manufacturer.
- Some detectable warning products require a concrete border for proper installation. The concrete border shall not exceed 2 inches per side.
- The detectable warning surface used shall be consistent throughout the project and are required to be installed on all curb ramps at public and private street intersections; signalized entrances; and at all channelized and raised islands where a curb ramp or cut-through is provided.



Detectable Warning Surface



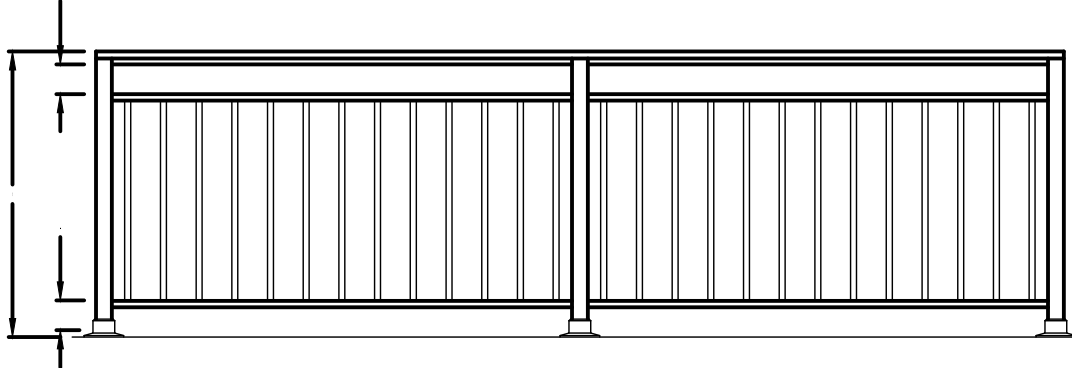
Truncated Dome Detail



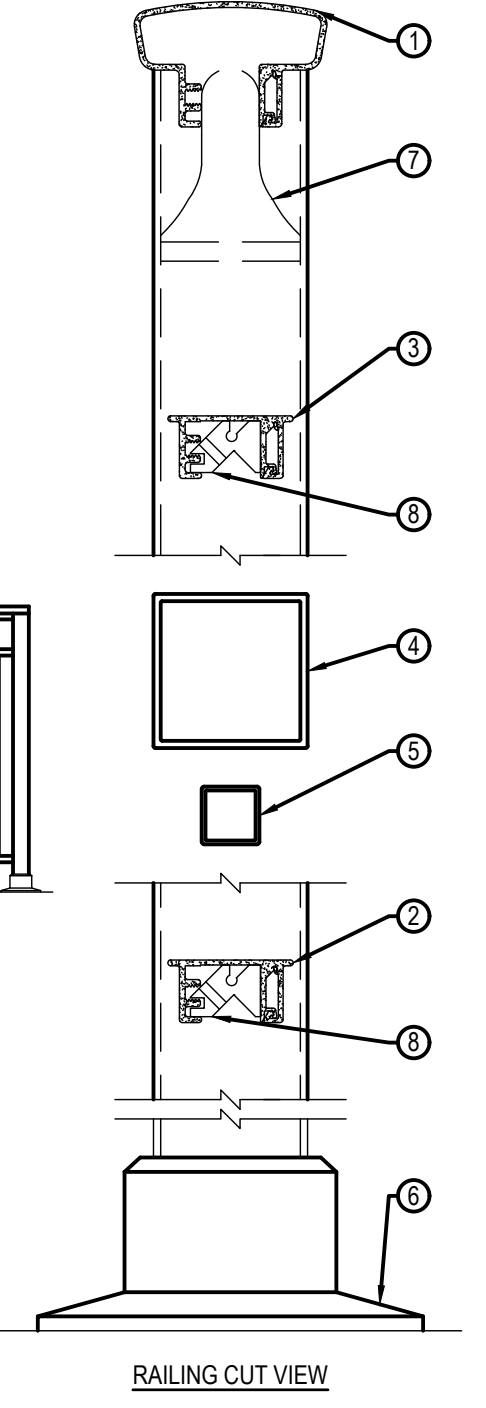
Superior Aluminum Products, Inc.

SUPERIOR ALUMINUM PRODUCTS
555 E MAIN ST. P.O. BOX 430
RUSSIA, OH 45363
TOLL FREE: 1-800-548-8656
www.superioraluminum.com

- SELECT DESIRED FINISH:**
- WHITE
 - BLACK
 - DARK BRONZE
 - ALMOND
 - TAN/WICKER
 - SANDSTONE/CLAY
 - LIGHT BRONZE
 - GREEN
 - BROWN
 - SATIN ANODIZED
- SELECT DESIRED BASE:**
- #974 SURFACE MOUNT WEDGE BASE
 - #975 SIDE MOUNT BASE
 - OTHER MOUNTING OPTION - CONTACT MANUFACTURER



- LEGEND**
- ① #901 TOP RAIL W/ SCREW COVER (2-1/2" WIDE X 1-5/8" HIGH X 0.075" WALL)
 - ② #903 BOTTOM RAIL W/ SCREW COVER (1-5/8" WIDE X 1-3/16" HIGH X 0.075" WALL)
 - ③ #903 MIDDLE RAIL W/ SCREW COVER (1-5/8" WIDE X 1-3/16" HIGH X 0.075" WALL)
 - ④ POST (2" SQ. X 0.094" WALL)
 - ⑤ PICKET (3/4" SQ. X 0.05" WALL) SPACED ON 4-1/2" CENTERS
 - ⑥ #974 SURFACE MOUNT WEDGE BASE
 - ⑦ #960X INTERNAL CROSSOVER CAP
 - ⑧ #923 RAIL WEDGE W/ SET SCREW



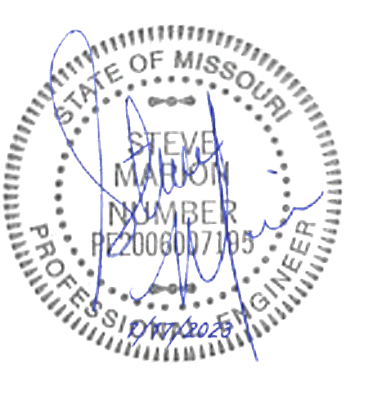
- NOTES:**
- INSTALLATION TO BE COMPLETED IN ACCORDANCE WITH MANUFACTURER'S SPECIFICATIONS.
 - DO NOT SCALE DRAWINGS.
 - THIS DRAWING IS INTENDED FOR USE BY ARCHITECTS, ENGINEERS, CONTRACTORS, CONSULTANTS AND DESIGN PROFESSIONALS FOR PLANNING PURPOSES. SHOP DRAWINGS SHALL BE PROVIDED.
 - ALL INFORMATION CONTAINED HEREIN WAS CURRENT AT THE TIME OF DEVELOPMENT BUT MUST BE REVIEWED AND APPROVED BY THE PRODUCT MANUFACTURER TO BE CONSIDERED ACCURATE.

1 ALUMINUM RAIL DETAIL

N.T.S.

P-2-NP-12

PREMIER DESIGN GROUP
100 MIDLAND PARK DRIVE
WENTZVILLE, MO 63385
MISSOURI CERTIFICATE OF AUTHORITY #E-20060001
MISSOURI CERTIFICATE OF AUTHORITY #E-200207819



ENGINEERS AUTHENTICATION
The responsibility for professional engineering practice on this project is hereby limited to the set of plans authorized by the seal, signature, and date hereunder attached. Responsibility is disclaimed for all other engineering plans involved in this project and specifically excludes revisions after the date values reauthenticating.

STEVEN J. MARKON, P.E.
PROFESSIONAL ENGINEER
PE 220007195

NOLES PROPERTIES LLC
BRYAN ROAD COMMERCIAL DEVELOPMENT

TBD BRYAN ROAD
OF FALLON, MO 63376
NOLES PROPERTIES LLC
11361 OLIVE BLVD
CREVE COEUR, MO 63141

Project: Bryan Road Commercial Development
Date: 5/2/2023

#	Revision Date	Description of Changes
1	6/26/2023	REVISED PER CITY OF OF FALLON AND OF FALLON FIRE COMMENTS
2	7/17/2023	REVISED PER CITY OF OF FALLON COMMENTS
3	7/17/2023	REVISED PER CITY OF OF FALLON COMMENTS

C-701

Project No. 2202920
Drawn By P. HEITZ
Checked By M. FOGARTY

ISSUED FOR CONSTRUCTION

CONSTRUCTION DETAILS

\\wms-prj\share\civil_3d\PROJECTS\2023\2202920_Noles_Bryan_Rd_CCommercial_Development\CONSTRUCTION_DRAWINGS\SHEETS\C-701_CONSTRUCTION_DETAILS.dwg