

THIS SHEET IS FOR DRAINAGE AREA PURPOSES ONLY.
DO NOT USE THIS PLAN FOR CONSTRUCTION.

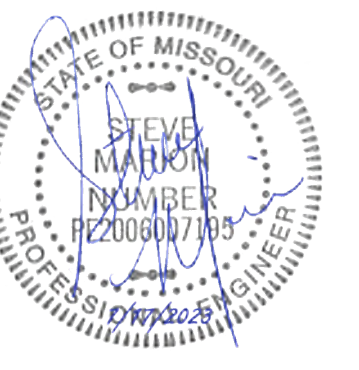
DISCHARGE POINT #1
9.45 ACRES @ CN=77 (A)
0.58 ACRES @ CN=98 (B)
4.87 ACRES @ CN=85 (C)
2.48 ACRES @ CN=93 (D)
0.74 ACRES @ CN=89 (E)
8.75 ACRES @ CN=84 (F)
0.16 ACRES @ CN=98 (G)
TC=14.86 MIN
2 YEAR EVENT = 62.52 CFS
25 YEAR EVENT = 143.33 CFS
100 YEAR EVENT = 197.30 CFS

PRE-DEVELOPED DRAINAGE AREAS

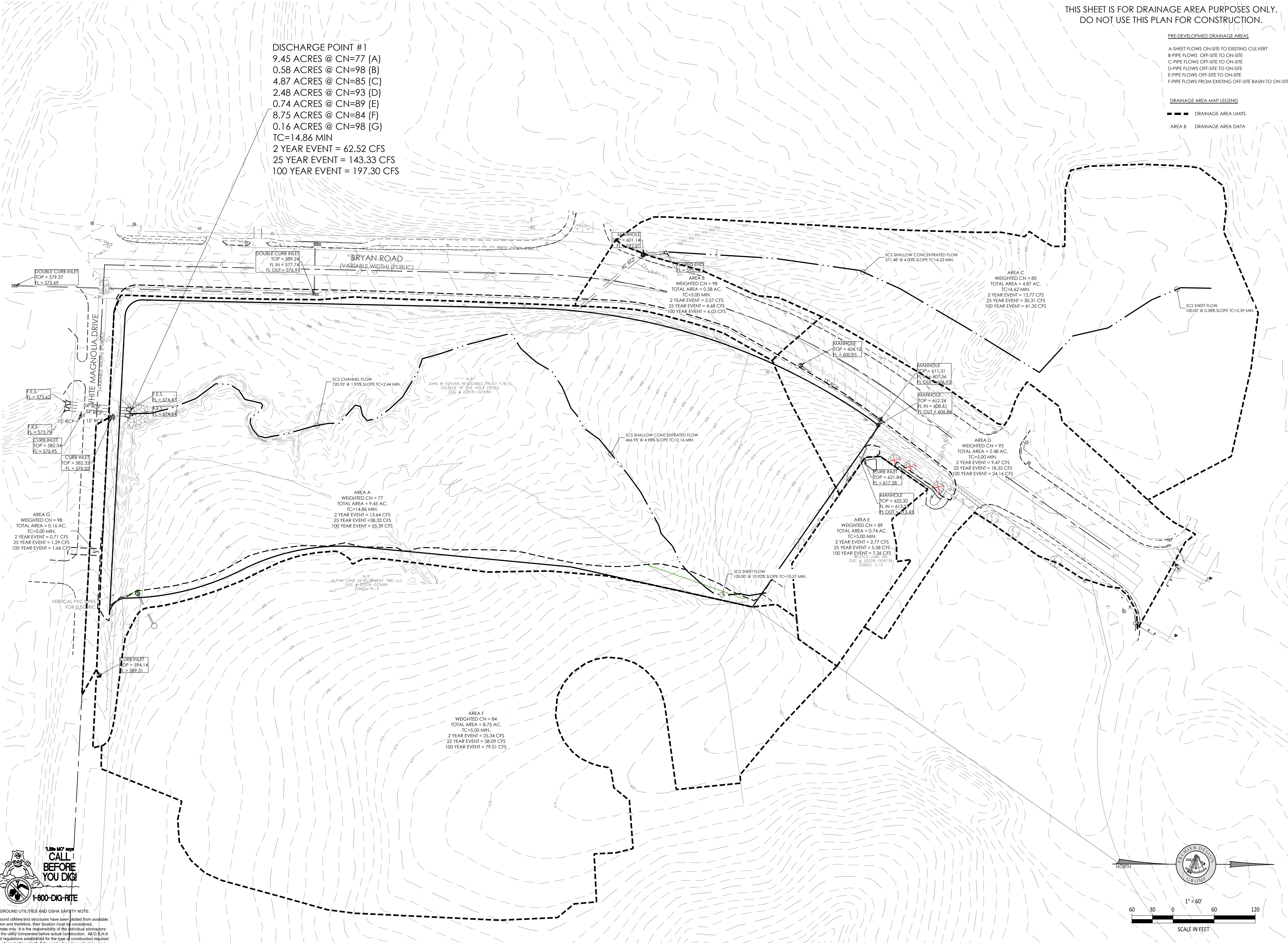
- A-SHEET FLOWS ON-SITE TO EXISTING CULVERT
- B-PIPE FLOWS OFF-SITE TO ON-SITE
- C-PIPE FLOWS OFF-SITE TO ON-SITE
- D-PIPE FLOWS OFF-SITE TO ON-SITE
- E-PIPE FLOWS OFF-SITE TO ON-SITE
- F-PIPE FLOWS FROM EXISTING OFF-SITE BASIN TO ON-SITE

DRAINAGE AREA MAP LEGEND

- DRAINAGE AREA LIMITS
- AREA B DRAINAGE AREA DATA



ENGINEERS AUTHENTICATION
The responsibility for professional engineering practice on this project is hereby limited to the set of plans authorized by the seal, signature, and date hereunder attached. Responsibility is disclaimed for all other engineering plans involved in this project and specifically excludes revisions after the date sites re-audited.
STEVEN D. MARKON, P.E.
PROFESSIONAL ENGINEER
PE 220007195



NOLES PROPERTIES LLC
BRYAN ROAD COMMERCIAL DEVELOPMENT
TBD BRYAN ROAD
OFALLON, MO 63376
NOLES PROPERTIES LLC
11361 OLIVE BLVD
CREVE COEUR, MO 63141

Date 5/2/2023

#	Revision Date	Description of Changes

Sheet Title: EXISTING DRAINAGE AREA MAP
Project No: 2202920
Drawn By: P. HEITZ
Checked By: M. FOGARTY
ISSUED FOR CONSTRUCTION

\\wvpc\p\civil\3D PROJECTS\2022\2202920 - Noles, Bryan Rd Commercial Development\CONSTRUCTION DRAWINGS\SHEETS\C-900 EXISTING DRAINAGE AREA MAP.dwg



UNDERGROUND UTILITIES AND OSHA SAFETY NOTE:
Underground utilities and structures have been plotted from available information and therefore, their location must be considered approximate only. It is the responsibility of the individual contractors to notify the utility companies before actual construction. All O.S.H.A. rules and regulations established for the type of construction required by these plans shall be strictly followed (ie. trenching, shoring, etc.)

