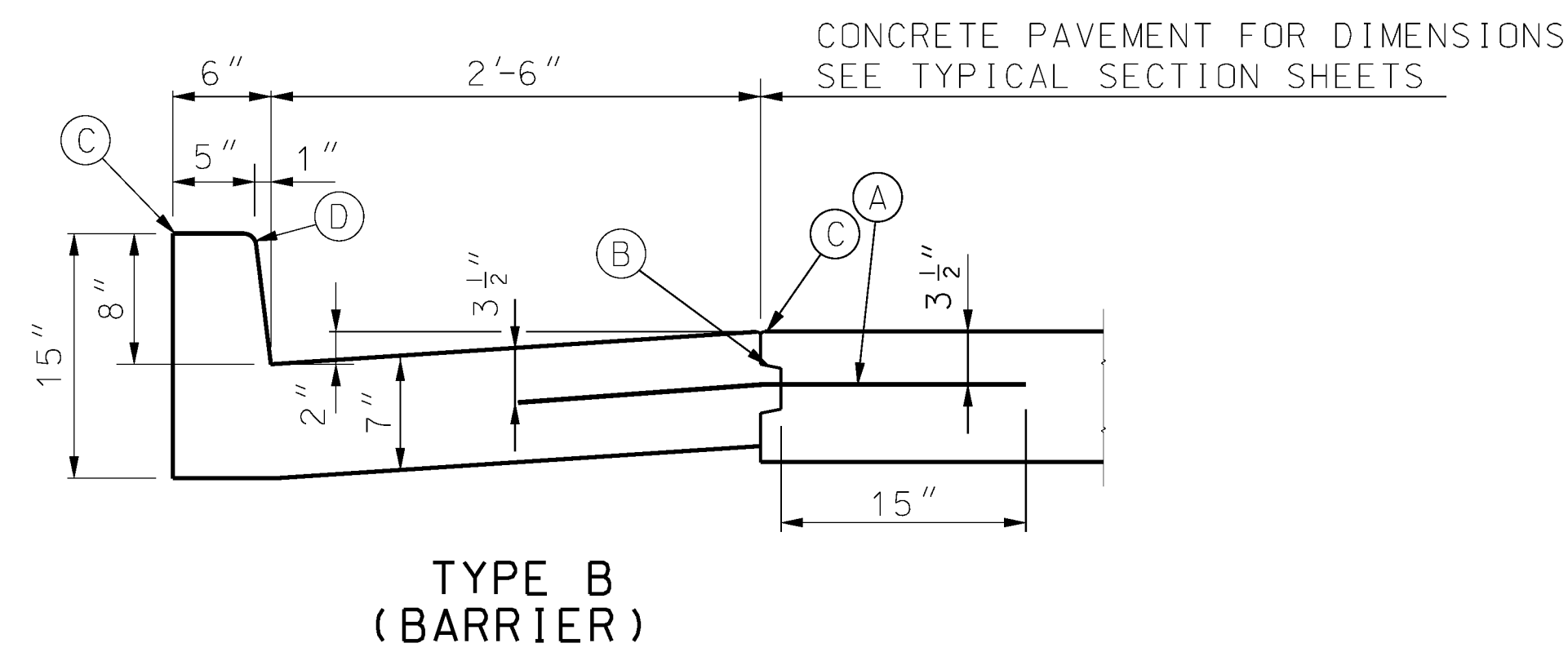


**TYPE B BARRIER CURB AND GUTTER
MODOT 609.00P**

LEGEND

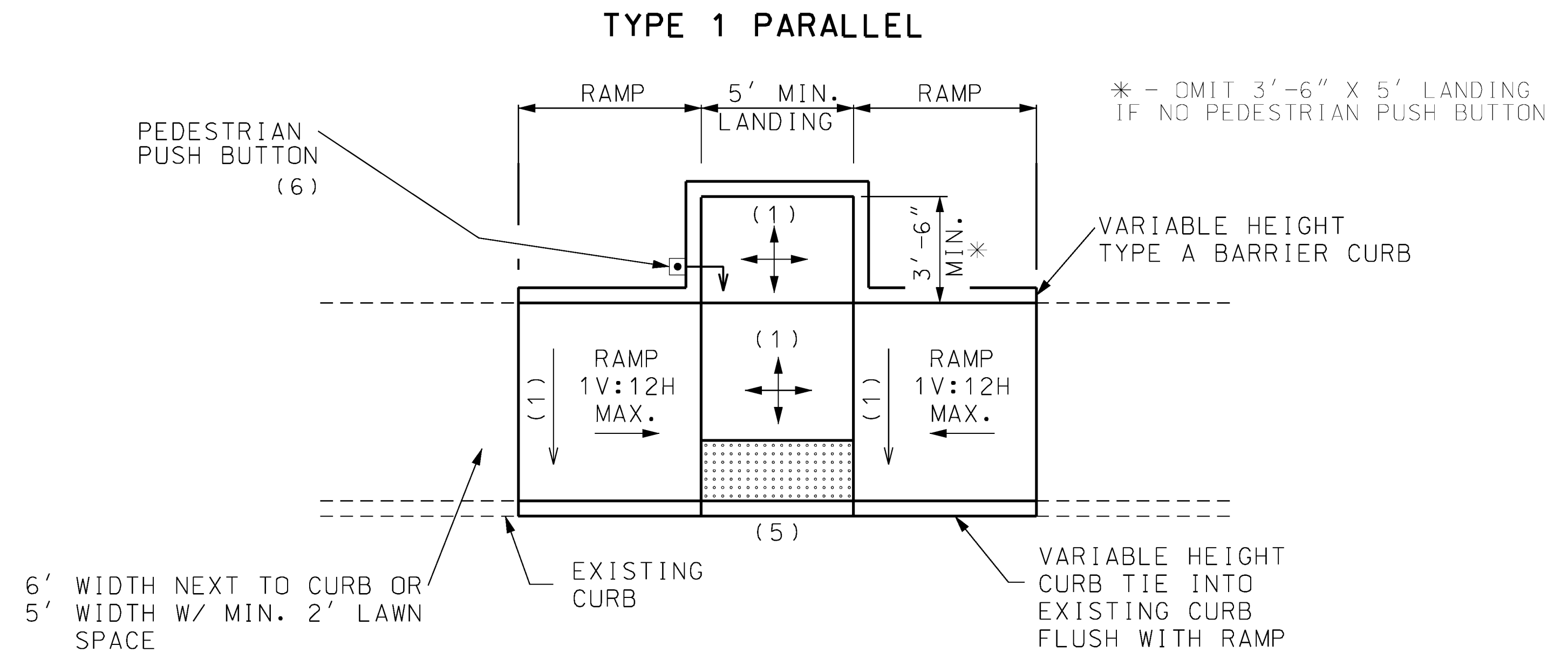
- (A) TIE BARS - 30" X #5 Ø AT 30" CTRS.
- (B) TONGUE & GROOVE JOINT WITH TIE BAR - SEE DETAIL.
- (C) ROUND TO 1/4" RADIUS. (EXCEPT FOR SAWED JOINTS)
- (D) ROUND TO 3/4" RADIUS.



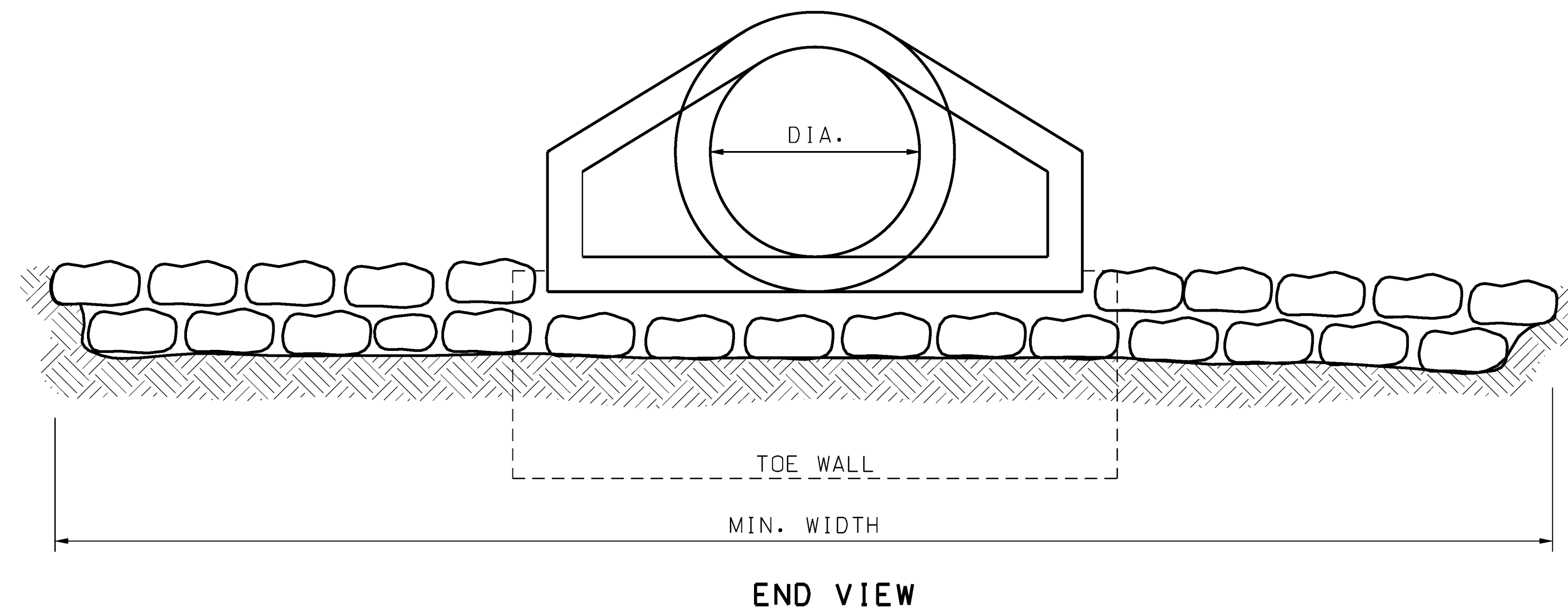
**TYPE 1 PARALLEL CURB RAMP
MODOT 608.50**

GENERAL NOTES:

- (1) 1.0% (2.0% MAX.) OR ROAD GRADE EXCEPTION
- (2) VARIABLE HEIGHT VERTICAL CURB . IF TRAVERSABLE USE A MAX. 1V:10H FLARE MEASURED PARALLEL TO THE CURB LINE.
- (3) ENSURE THAT THE INSIDE EDGE OF CURVED RAMPS MAINTAIN AN 8.3% (1V:12H) MAXIMUM SLOPE.
- (4) HEIGHT VARIES TO MEET EXISTING GROUND.
- (5) THE COUNTER SLOPE OF THE GUTTER OR STREET AT THE FOOT OF CURB RAMP RUNS, BLENDED TRANSITIONS, AND TURNING SPACES SHALL BE 5% MAXIMUM.
- (6) THE FACE OF PEDESTRIAN PUSH BUTTONS SHALL BE 0" OFFSET FORFRONT APPROACH AND 10" MAX. FOR SIDE APPROACH TO THE CURB FACE.



**ROCK LINING FOR CULVERT OUTLET
MODOT 609.70C**



ROCK LINING FOR CULVERT OUTLETS

| CULVERT SIZE, DIA (IN.) | MINIMUM DEPTH AND WIDTH (FT.) | MINIMUM LENGTH (FT.) | ROCK LINING (CU. YD.) | EQUIVALENT PIPE ARCH CULVERT (APPROX.) | EQUIVALENT CONCRETE BOX CULVERT (APPROX.) |
|-------------------------|-------------------------------|----------------------|-----------------------|--|---|
| 18 | 1 X 4 | 12 | 2 | | |
| 24 | 1 X 6 | 14 | 3 | | 2' X 1 1/2' |
| 30 | 1 X 7 | 16 | 4 | B-5 | 2' X 2' |
| 36 | 1.5 X 9 | 18 | 9 | B-6 | 3' X 2' |
| 42 | 2 X 10 | 20 | 15 | B-7 | 3' X 3' |
| 48 | 2 X 12 | 20 | 18 | B-8 | 4' X 3' |
| 54 | 2 X 13.5 | 22 | 22 | B-9 | 4' X 4' |
| 60 | 2 X 15 | 25 | 28 | B-10 | 5' X 4' |
| 66 | 2 X 18 | 25 | 33 | B-11 | 5' X 5' |
| 72 | 2 X 20 | 30 | 44 | B-12 | 5' X 6' |
| 84 | 2.5 X 25 | 35 | 81 | | 6' X 6' |
| 96 | 2.5 X 30 | 40 | 111 | | 7' X 7' |
| 108 | 3 X 32 | 40 | 142 | | 8' X 8' |

REVISION

PER CITY COMMENTS 03/10/16

PER CITY COMMENTS 04/19/16

PROJECT NUMBER

GBA PROJECT NUMBER
13226.00

DATE

4/20/2016

DESIGNED:
DSB

DRAWN:
MLG

REVIEWED

SHEET TITLE

**DETAILS
SHEET 1 OF 3**

SHEET NUMBER

7