

Do not scale drawing. Follow dimensions.

Sidewalks and sidewalk curb ramps shall be constructed in accordance with these details and the current approved "Americans with Disabilities Act Accessibility Guidelines" (ADAAG).

Provide a landing at the top of each straight ramp when the Grade Along Curb ("G") is greater than +2% and less than -7%. For other values of "G", including all negative (-) values, no landing is required.

Minimum sidewalk width along 6" vertical curb shall be 5 feet. Minimum sidewalk width along 3" rolled curb shall be 4 feet.

Maximum sidewalk cross slope 0.02%/ft.

All sidewalk sections shall be 4" thick, except where indicated otherwise by shaded portions shown on details. All sidewalk sections and curb ramps, regardless of thickness, shall be paid for as "Concrete Sidewalk".

Where curb ramp meets pavement, bulinose will not be permitted. Construct a diagonal ramp when the maximum corner radius allowed for a straight ramp is exceeded.

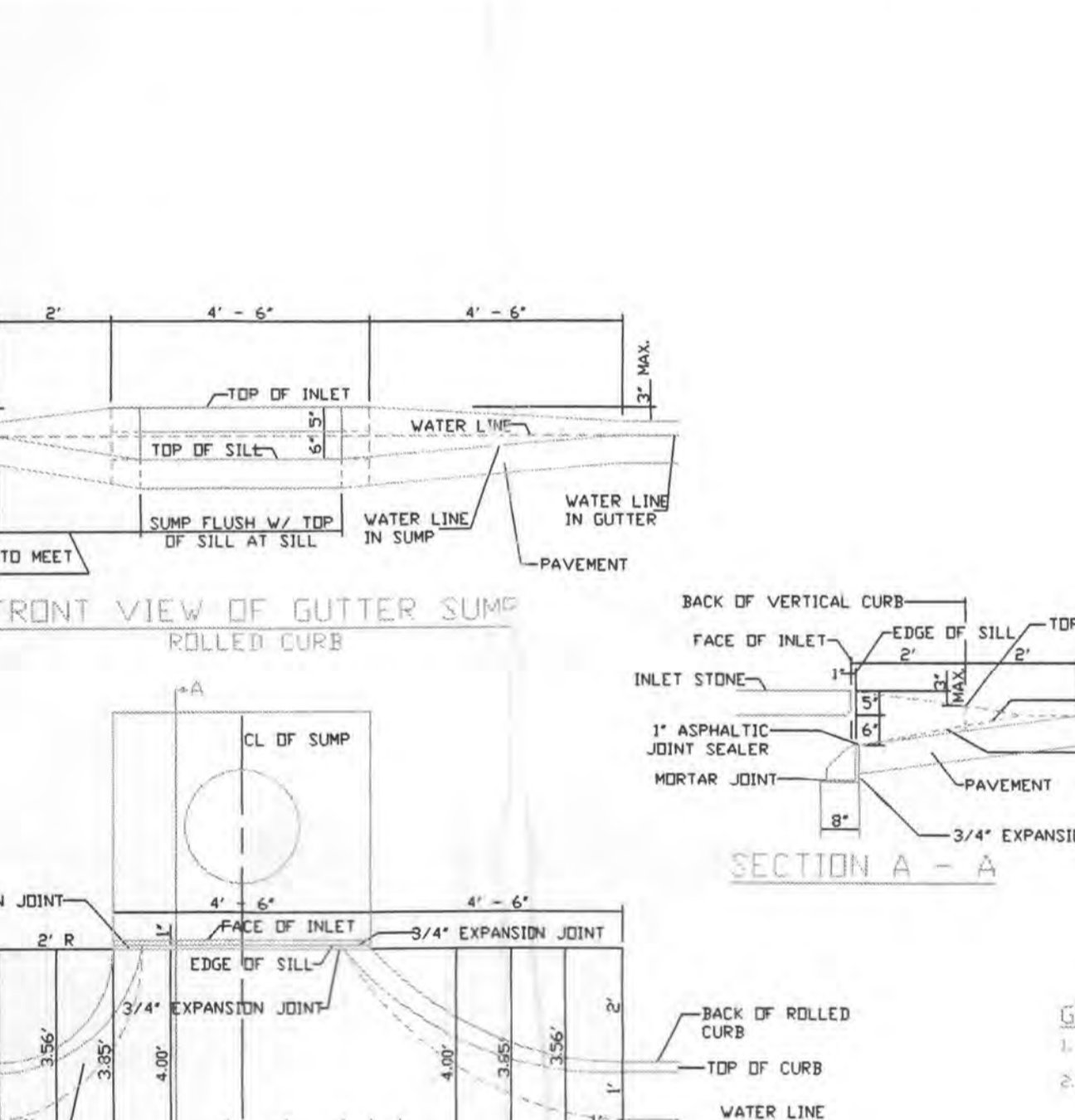
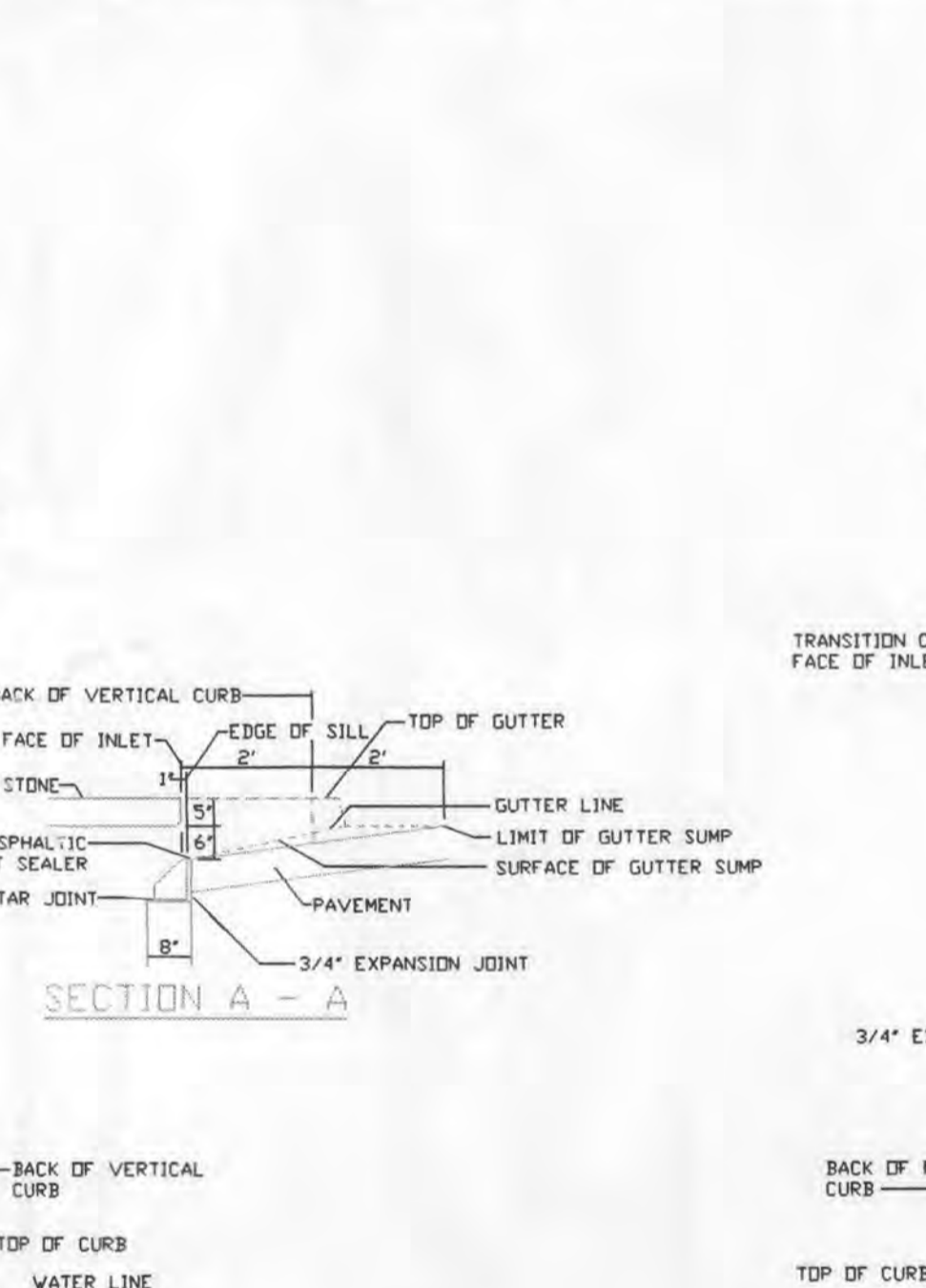
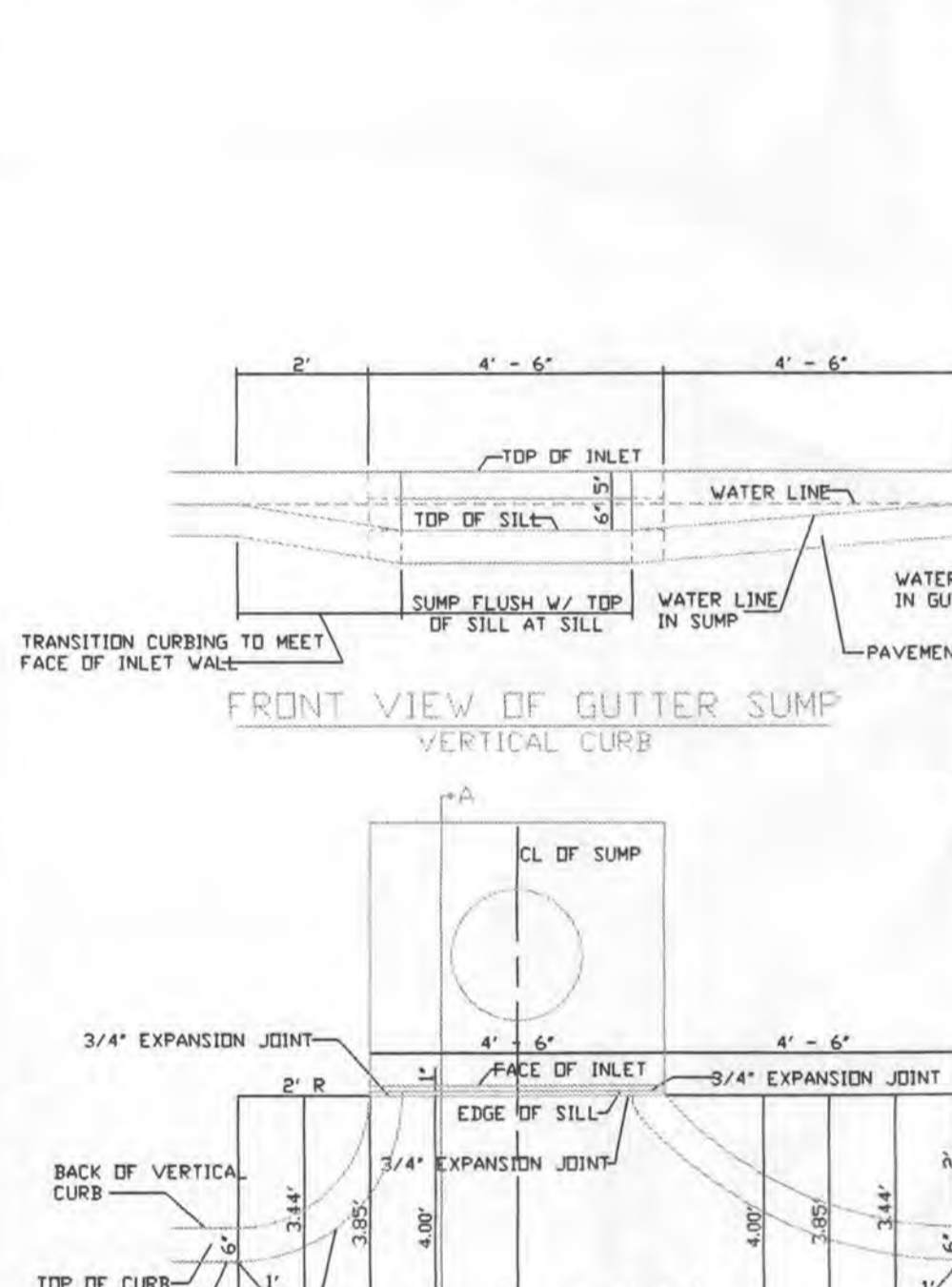
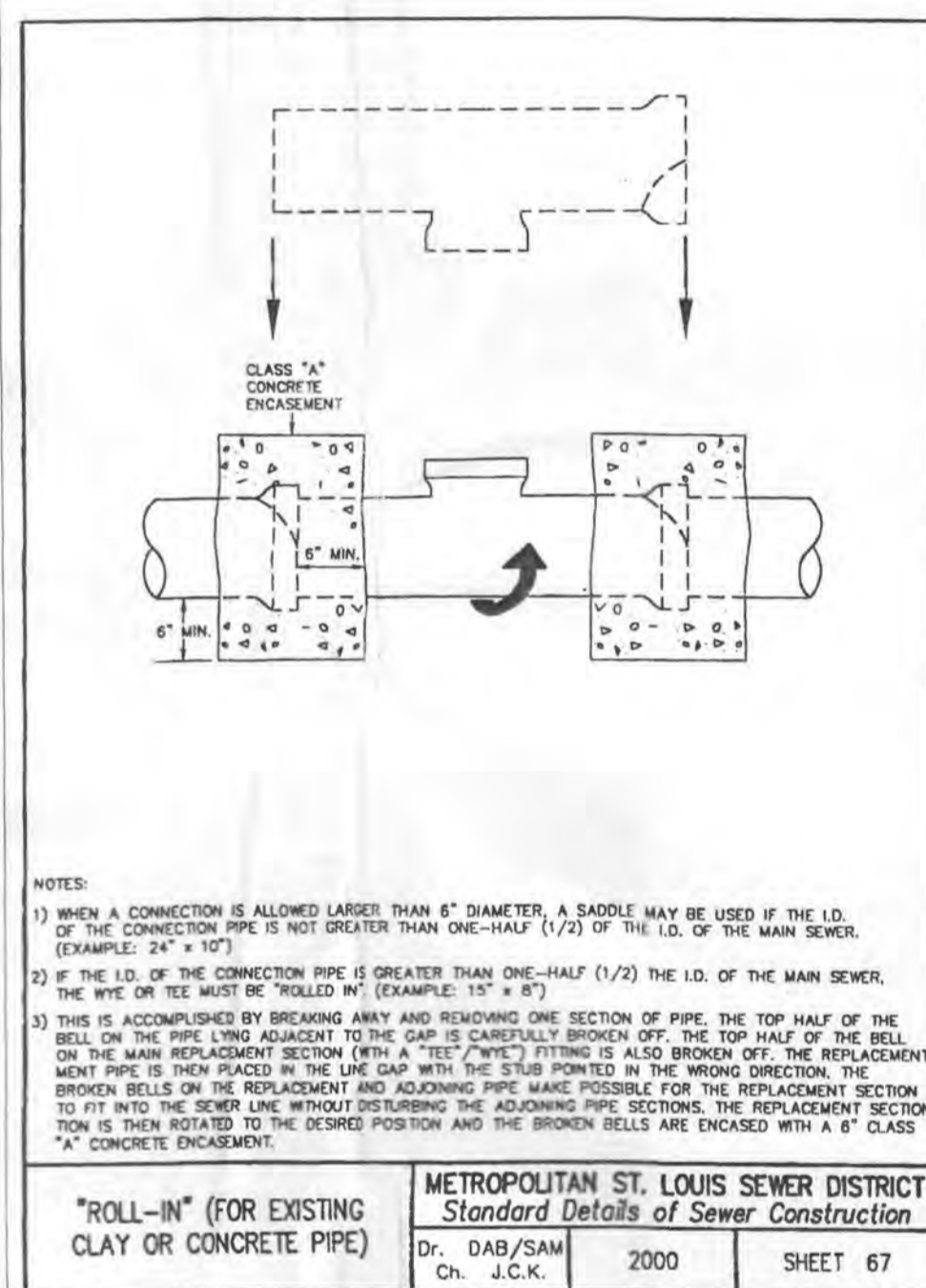
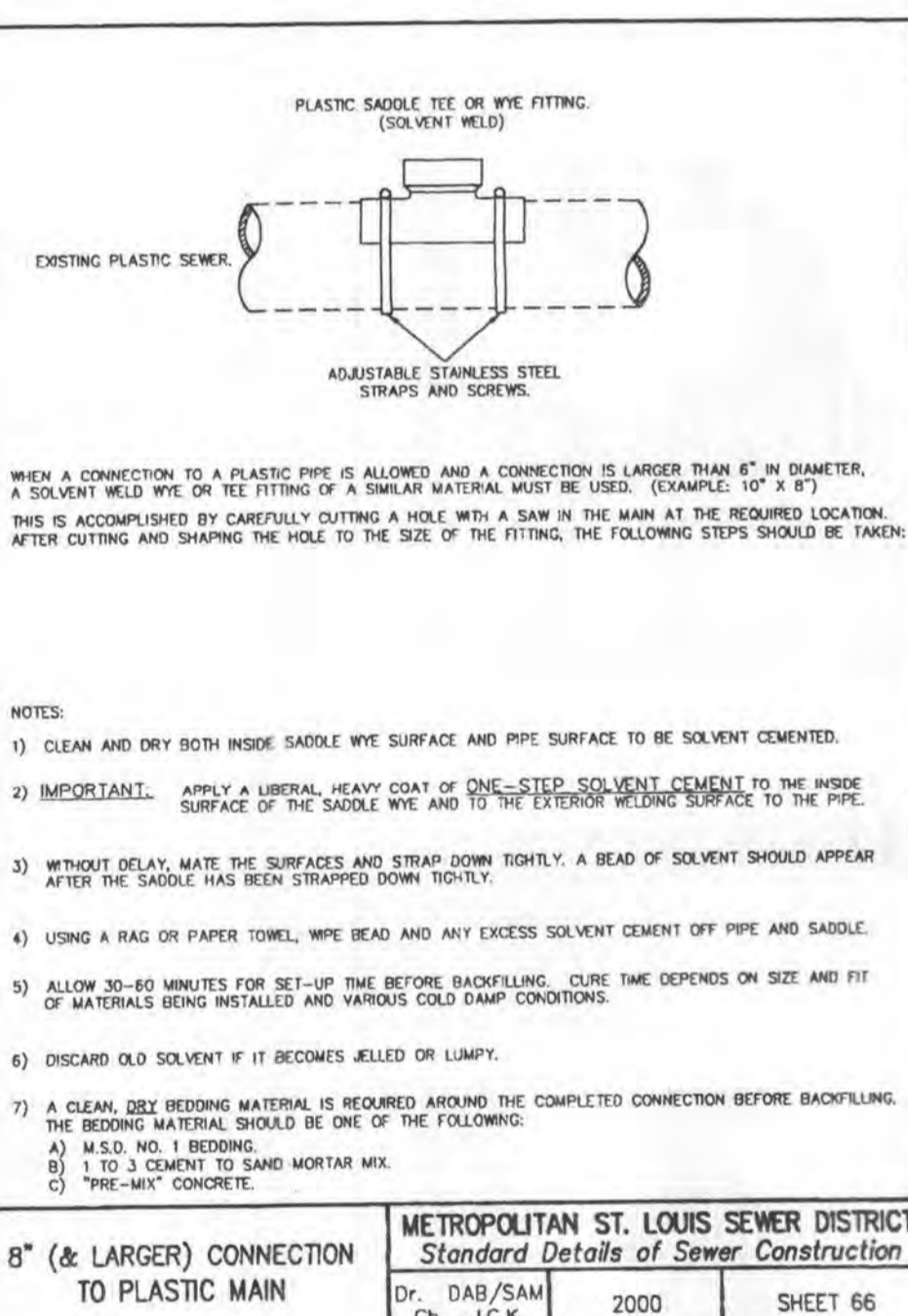
If integral concrete curb is constructed, strike a dummy joint across bottom of ramp at curb line. If concrete curb is doweled on block out pavement to provide full depth curb across ramp from outer point of curb taper to outer point of curb taper.

For sidewalk locations on Cur-De-Sacs, refer to "Pavement Construction Details".

For pavement longitudinal and transverse joints and dowel and tie bar requirements and dimensions, refer to the Pavement Construction Details for "Joints and Curb", Standard Drawing 5202.03.

For roadway cross slopes, pavement types, and thicknesses, refer to "Standard Typical Section".

The intersection of two sidewalks or the intersection of a sidewalk and a driveway may serve as a wheelchair passing space on sidewalks less than 5 feet wide.



GENERAL NOTES

- DO NOT SCALE DRAWING. FOLLOW DIMENSIONS.
- THE DETAILS SHOWN ARE ADAPTED FROM REVISED STANDARD CONSTRUCTION DETAILS FOR SEWERS AND DRAINAGE FACILITIES DATED 1986.
- THE STANDARD SPECIFICATION SECTIONS NOTED REFER TO THE STANDARD CONSTRUCTION SPECIFICATIONS FOR SEWERS AND DRAINAGE FACILITIES OF THE METROPOLITAN ST. LOUIS SEWER DISTRICT DATED 1986.
- INLETS MAY BE LOCATED 2.5 FEET FROM THE BACK OF ROLLED CURB AND 6.5 FEET TO ALL SUMP DIMENSIONS FOR ALL INLETS WHICH ARE OFFSET 2.5 FEET FROM THE BACK OF CURB.

