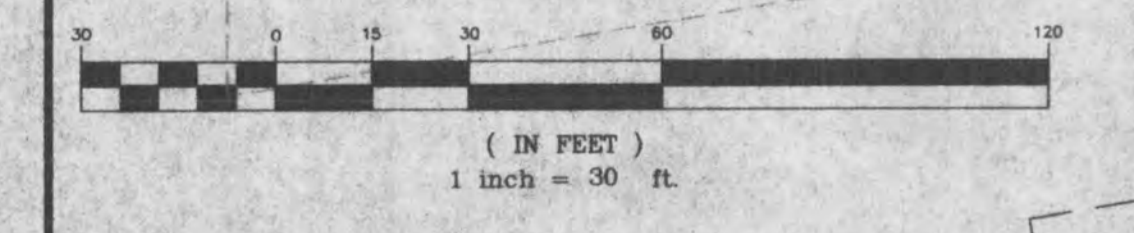
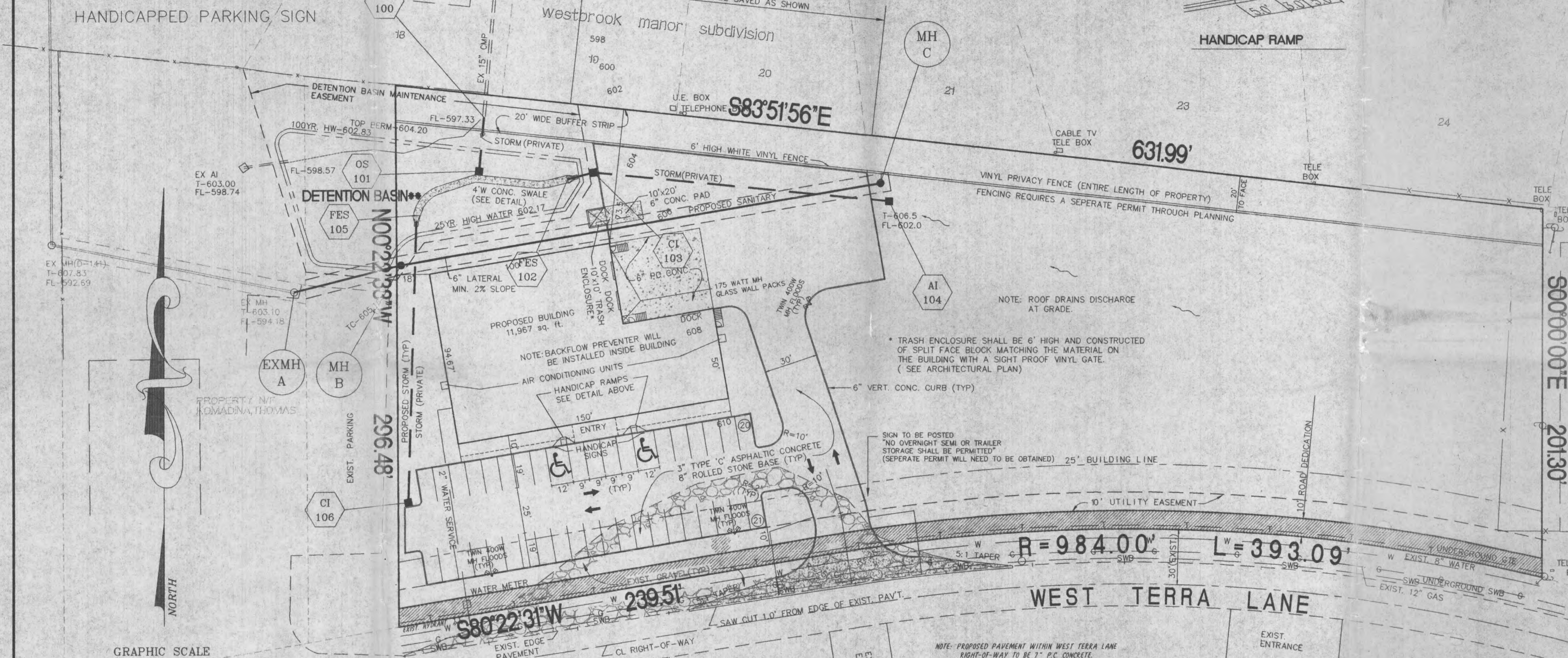
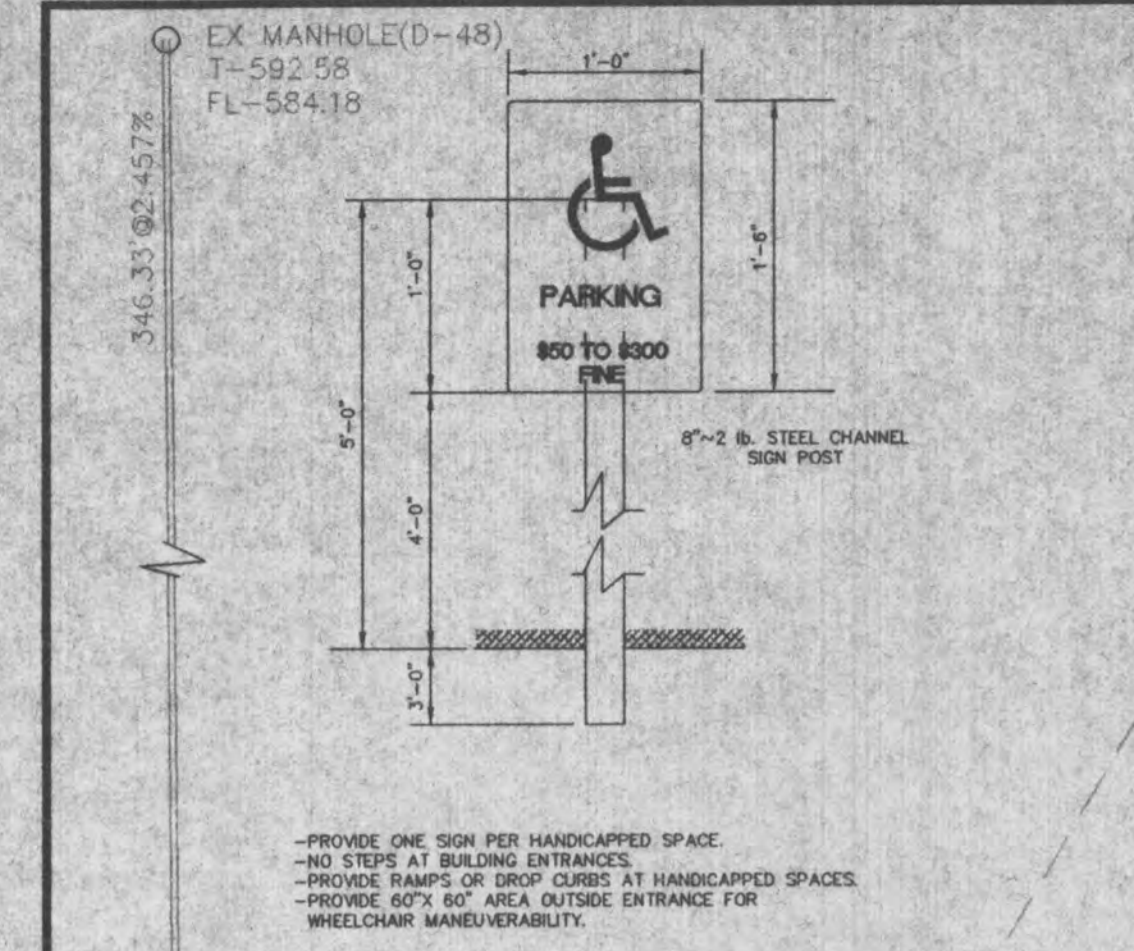
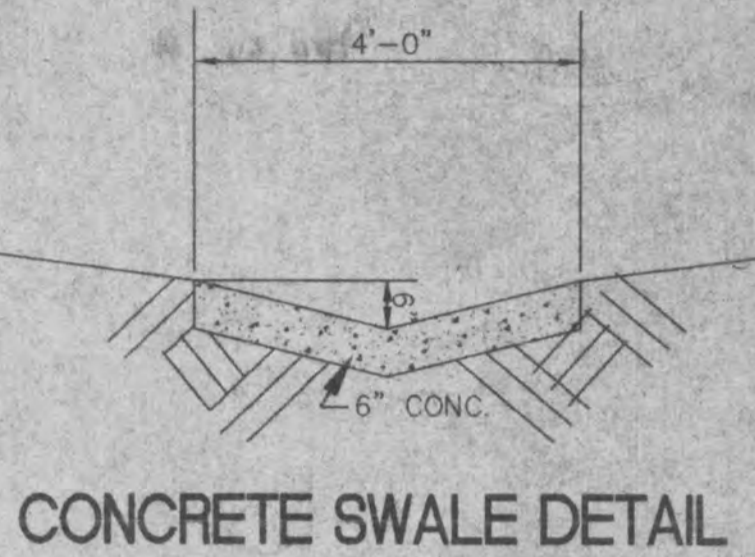
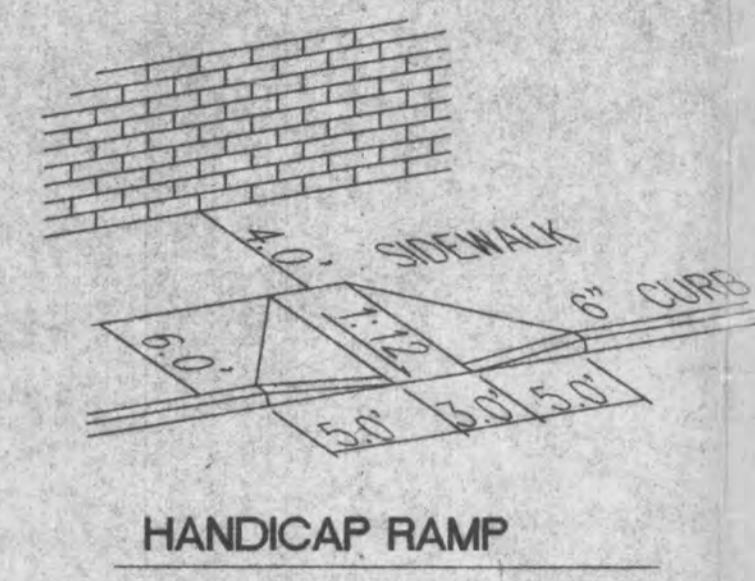
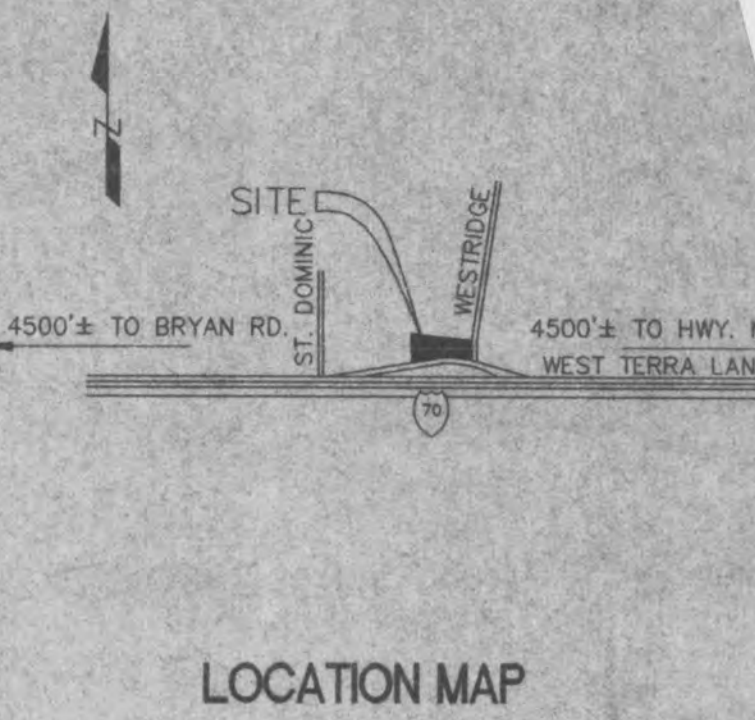
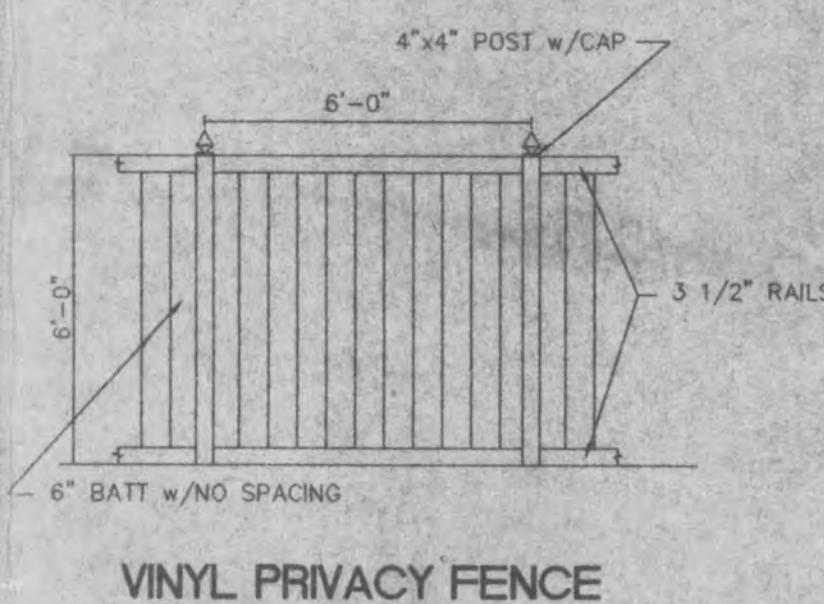


IMPROVEMENT PLANS

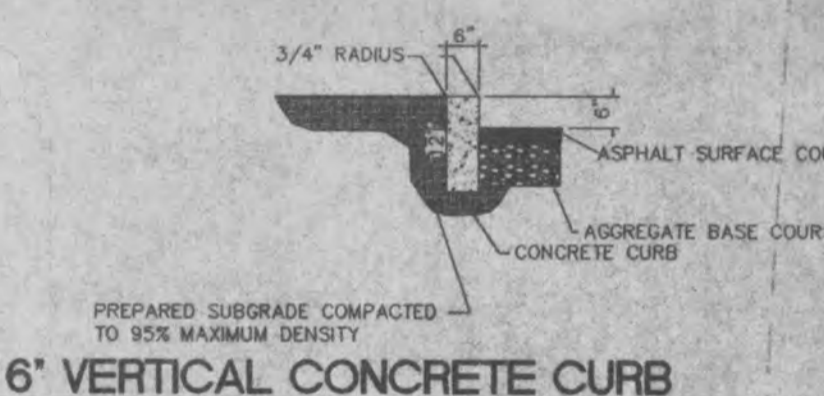
BURKEMPER BUILDING

A TRACT OF LAND IN U.S. SURVEY 55, T. 47 N., R. 3 E.



INDEX

SHEET 1	FLAT PLAN
SHEET 2	GRADING PLAN
SHEET 3	CONSTRUCTION NOTES
SHEET 4	DRAINAGE AREA PLAN
SHEET 5	PROFILES
SHEET 6	LANDSCAPE PLAN



APPROVED
9-11-01

Call Before you DIG
TOLL FREE
1-800-344-7483
MISSOURI ONE-CALL SYSTEM INC

Underground facilities, structures and utilities have been plotted from available surveys, records and information, and therefore, do not necessarily reflect the actual existence, non-existence, size, type, number of, or location of these facilities, structures, and utilities. The Contractor shall be responsible for verifying the actual location of all underground facilities, structures, and utilities, either shown or not shown on these plans. The underground facilities, structures, and utilities shall be located in the field prior to any grading, excavation or construction of improvements. These provisions shall in no way absolve any party from complying with the Underground Facility Safety and Damage Prevention Act, Chapter 319, RSMo.



PREPARED FOR:
 BURKEMPER CONSTRUCTION, INC RECEIVED
 MR. TIM BURKEMPER, PRESIDENT JUL 11 2001
 1211 SOUTH DUCHE SNE
 ST. CHARLES, MISSOURI 63301
 TELEPHONE: 636.946.8839
 FAX: 636.946.2910

6/19/01	2	PER CITY OF FALLON		
4/03/01	1	PER CITY OF FALLON		
DATE:	NO.:	REVISION:		
MUSLER ENGINEERING COMPANY				
CIVIL ENGINEERING - PLANNING - LAND SURVEYING				
32 Portwest Court, St. Charles Missouri 63303				
Telephone: (636) 916-0444				
DATE:	DRAWN:	CHECKED:	PROJECT NO.:	SHEET NO.
02-16-01	JDN	RSM	00-510	1