

**GRADING PLAN
BURKEMPER BUILDING**

**VEGETATIVE ESTABLISHMENT
FOR URBAN DEVELOPMENT SITES**

APPENDIX A

SEEDING RATES:

Permanent
Tall Fescue - 30 lbs./ac.
Smooth Brome - 20 lbs./ac.
Combined Fescue@15 lbs./ac. and Brome@10 lbs./ac.

Temporary
Wheat or Rye - 150 lbs./ac. @ 0.5 lbs. per 1000 sq. ft.
Oats - 120 lbs./ac. @ 2/3 lbs. per 1000 sq. ft.

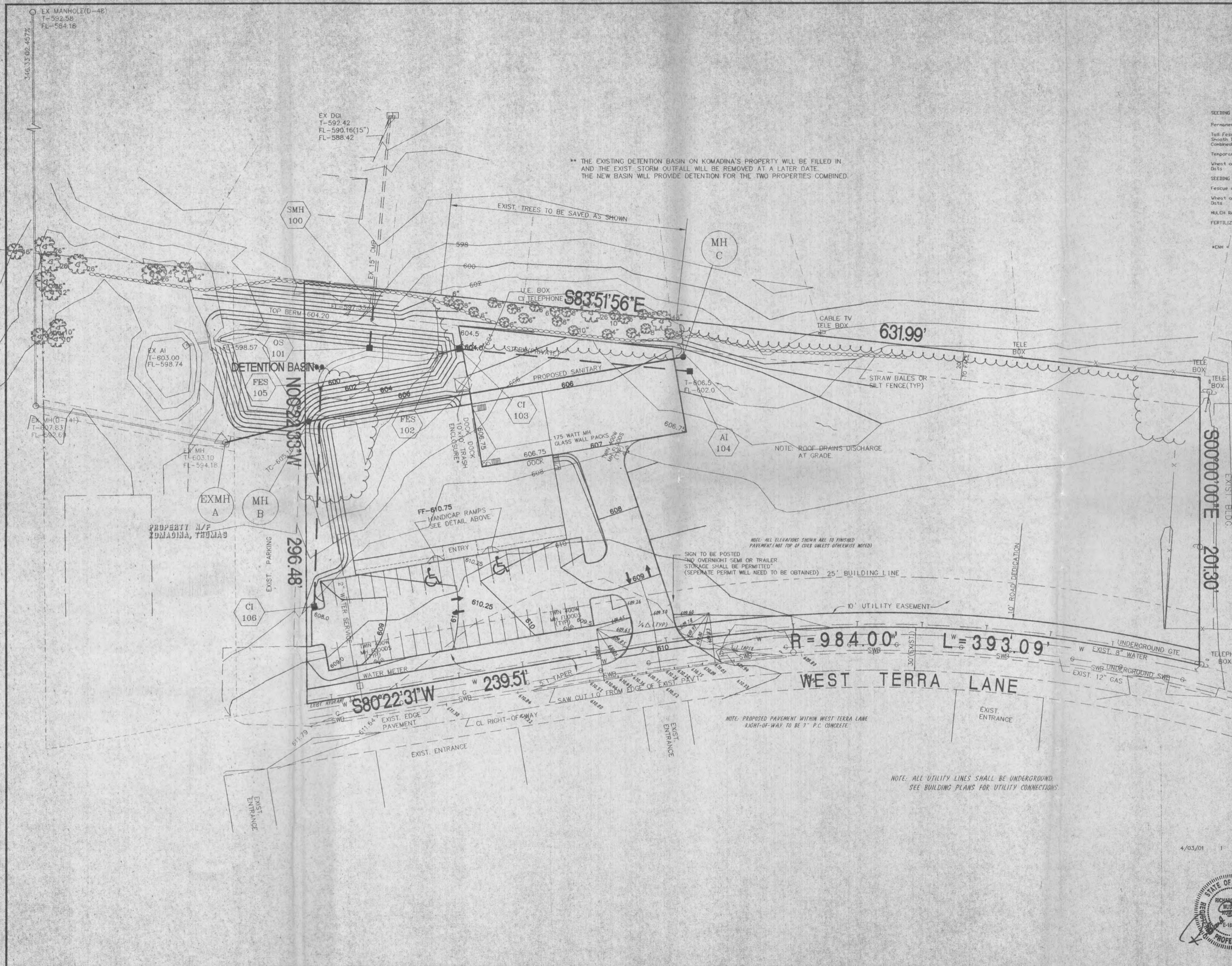
SEEDING PERIODS:
Fescue or Brome - March 1 to June 1
Wheat or Rye - August 1 to October 1
Oats - March 15 to November 1
March 15 to September 15

MULCH RATES: 100 lbs. per 1000 sq. ft. (4,356 lbs. per acre)

FERTILIZER RATES: Nitrogen - 30 lbs./ac.
Phosphate - 30 lbs./ac.
Potassium - 30 lbs./ac.
Lime - 600 lbs./ac. E88e

*ENM = effective neutralizing material as per State evaluation of quarried rock.

** THE EXISTING DETENTION BASIN ON KOMADINA'S PROPERTY WILL BE FILLED IN AND THE EXIST. STORM OUTFALL WILL BE REMOVED AT A LATER DATE. THE NEW BASIN WILL PROVIDE DETENTION FOR THE TWO PROPERTIES COMBINED.



Call Before you DIG
TOLL FREE
1-800-344-7483
MISSOURI ONE-CALL SYSTEM INC

Underground facilities, structures and utilities have been plotted from available surveys, records and information, and therefore, do not necessarily reflect the actual existence, non-existence, size, type, number of, or location of these facilities, structures, and utilities. The Contractor shall be responsible for verifying the actual location of all underground facilities, structures, and utilities, either shown or not shown on these plans. The underground facilities, structures, and utilities shall be located in the field prior to any grading, excavation or construction of improvements. These provisions shall in no way absolve any party from complying with the Underground Facility Safety and Damage Prevention Act, Chapter 319, RSMo.

4/03/01 PER CITY OF O'FALLON

