

**ANOVA**

**LBR5PVC SURF METRO BIKE RACK**  
5-bike capacity, plastisol coated, surface mount bike rack

Shipping Information

Unit No.	Unit Shipping Wt. (LBS)	Unit Shipping Wt. (Kg)	Unit Ship Size (inches)	Max Unit Ship Weight (LBS)	Package Qty	Total No. Pkgs	Shipping Class
50	14.0	6.3	42.00	50.0	1	1	30

Copyright © 2013 ANOVA™

**Plastic Parking Block Installation Instructions**

LAG BOLT METHOD: Recommended for Asphalt or Concrete Traffic Lanes where drilling holes are permitted.

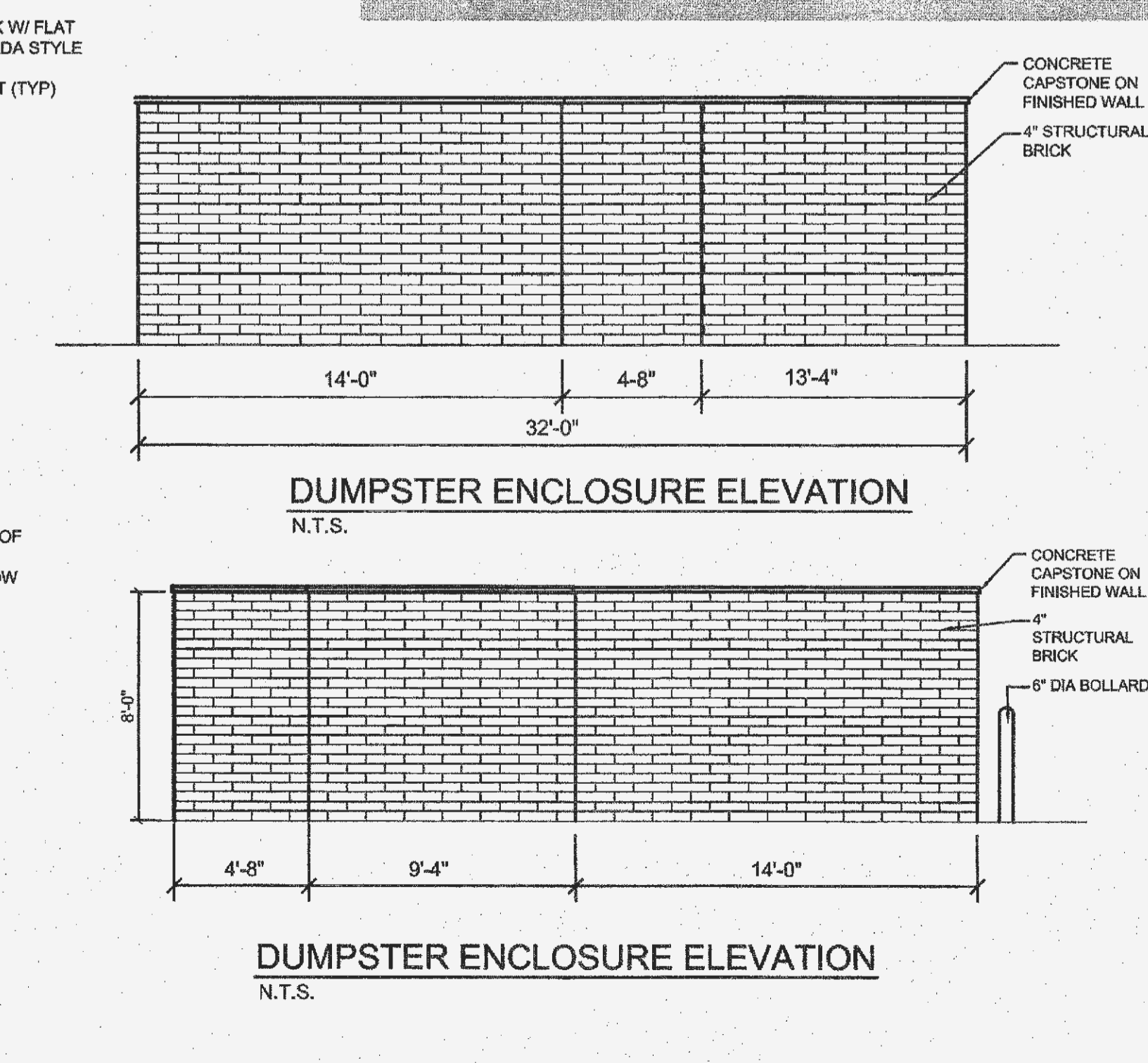
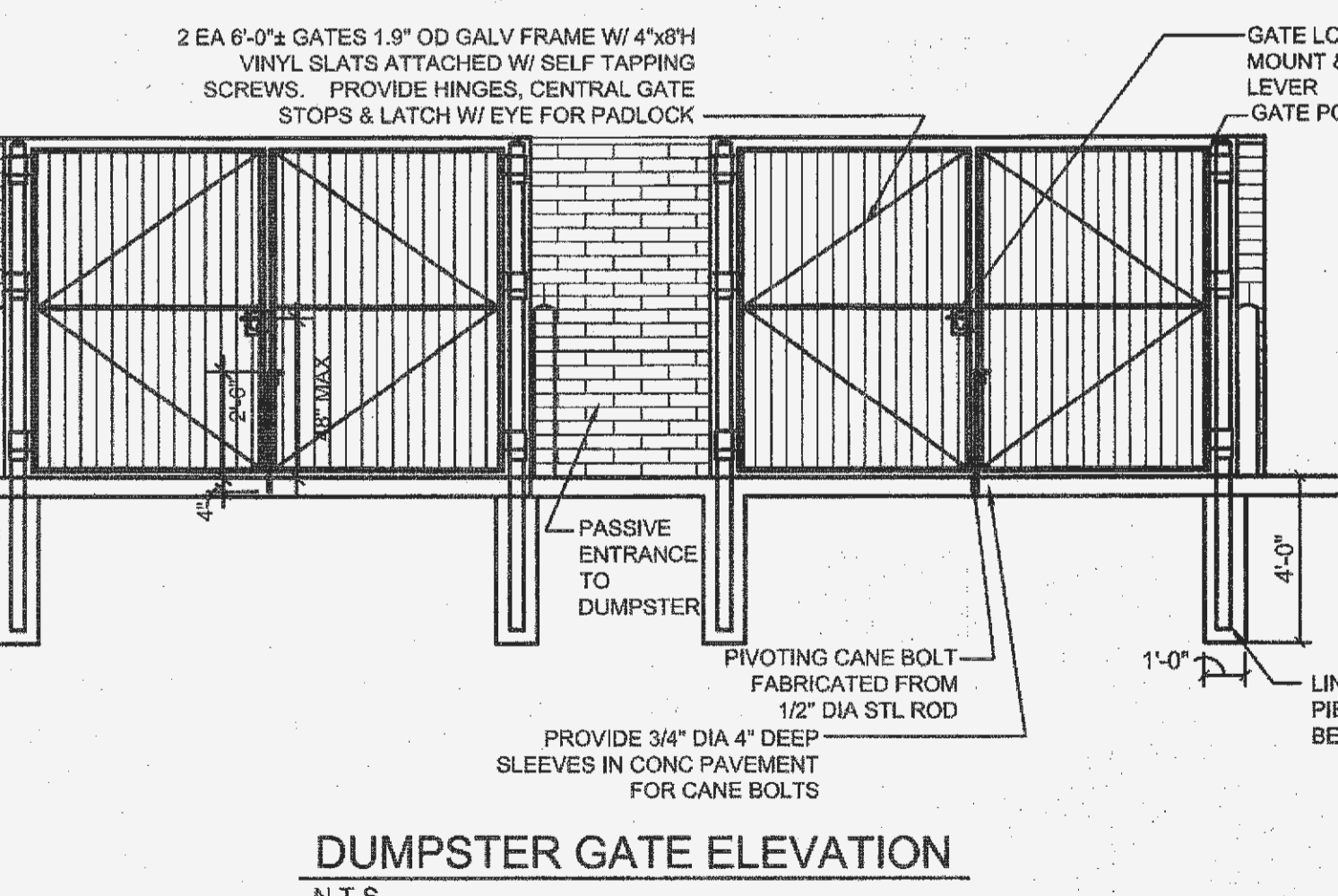
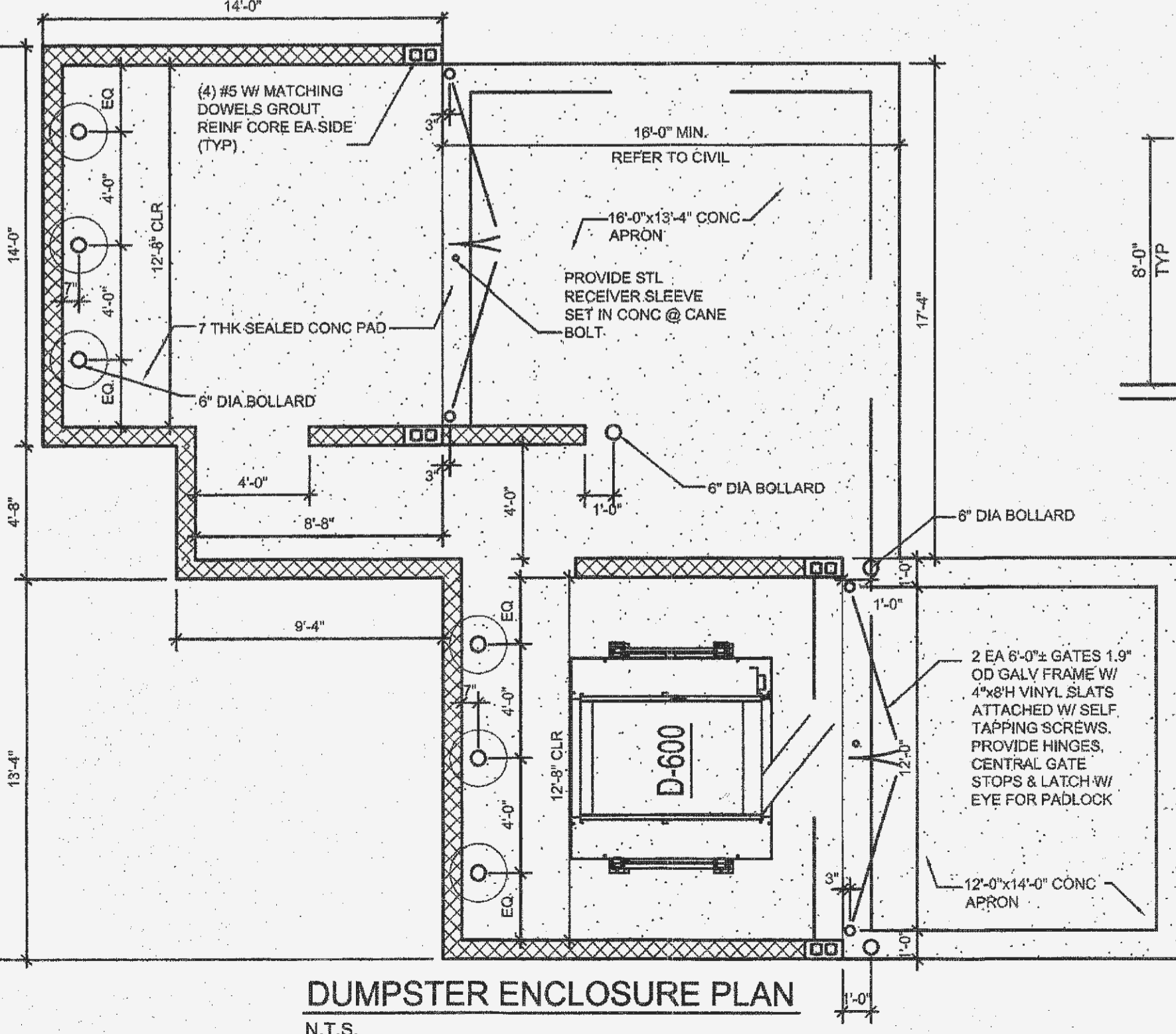
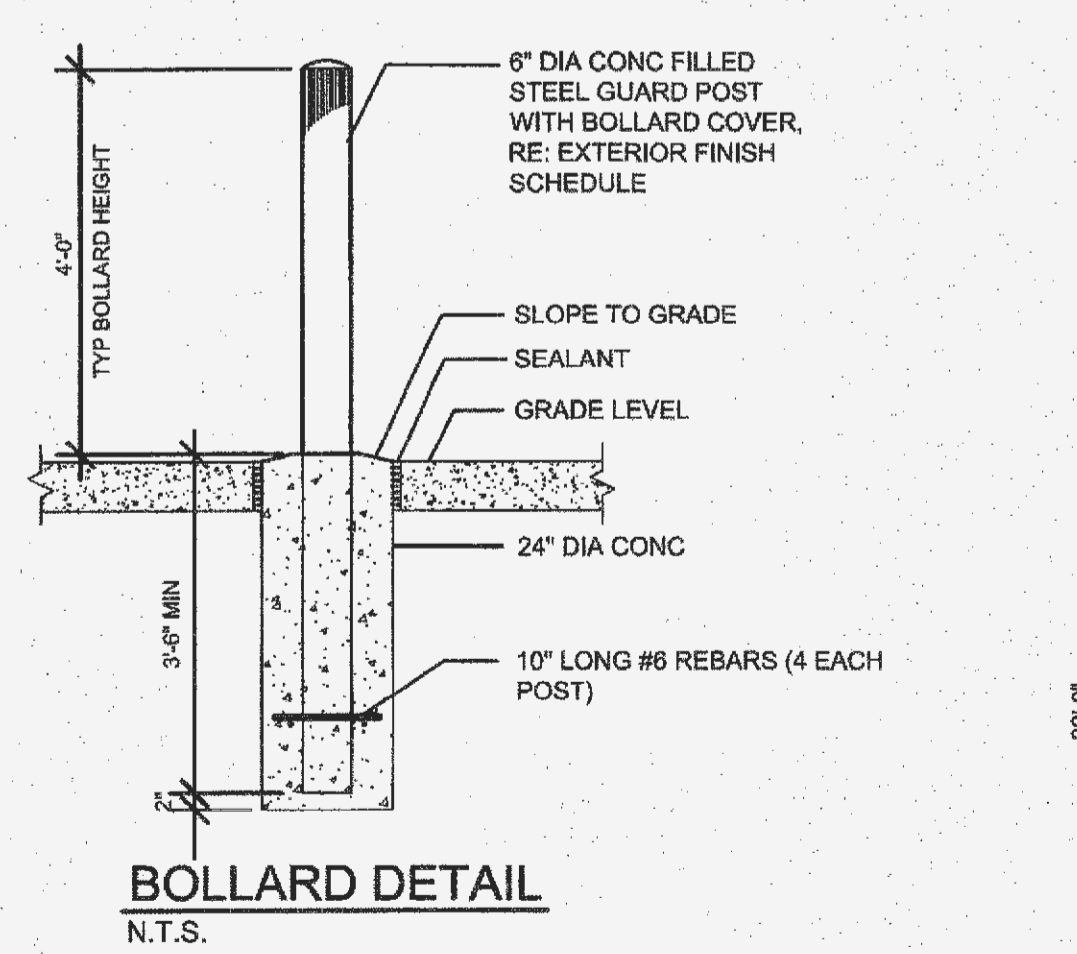
STEEL SPIKE METHOD: Recommended for use on Asphalt or wood Block Surfaces only.

Hardware Supplied:  
1/2" x 8" lag bolt for each hole  
2 1/2" washers each  
5/8" lag anchor

Tools Required:  
High speed hammer drill with 3/8" masonry bit  
Sledge hammer for driving spikes

- Clean the surface so that it is free from dirt.
- Place the parking block in its installation position and mark the location of each hole using the pre-drilled holes as a template.
- Remove the parking block. Using a high-speed hammer drill with a 3/8" masonry bit, drill a hole at each marked location to a depth of 3 1/2" below the surface.
- Insert lag anchor into each hole (large anchor opening on top). Tap the anchor into the hole with a mallet so that the anchor is set flush with the surface. Place a washer over each anchor hole.
- Reposition the parking block in its installation position. Slip a washer onto a lag bolt. Insert the bolt through a pre-drilled hole in the parking block and tighten the bolt about three quarters of the way with the 1/2" socket. Repeat for each hole in the parking block. Finish tightening each bolt until just snug. DO NOT OVER TIGHTEN! Excessive tightening may damage the ramp and void the product warranty.

**INNOPLAST**  
Innovative Polymer Products  
10126 Gladtschall Parkway  
Chapin Falls, OH 44823  
phone 988-515-9287 fax 440-543-9661  
INNOPLAST.com



**1-800-DIG-RITE**

CALL BEFORE YOU DIG

NOTE: Underground utilities and structures have been plotted from available information and therefore, their location must be considered approximate only. It is the responsibility of the individual contractors to notify the utility companies before actual construction.

**CVS pharmacy**

NORTHERN 13,225-FIGHT  
SPRINGFIELD, MO  
CHAMBER DRIVE-THRU  
STORE NUMBER: 10546

PROJECT TITLE: RE: FEISE ROAD AND BRYAN ROAD  
PROJECT TYPE: NEW CONSTRUCTION  
DEAL TYPE: Fee for Service

CS PROJECT NUMBER: 69591

**NORR**

ARCHITECTS ENGINEERS PLANNERS  
719 Greenwood Street  
Suite 1000  
Detroit, MI 48226  
(313) 924-9113

**PREMIER CIVIL ENGINEERING**

308 TOW COURT  
Lake Saint Louis, MO 63397  
Phone: (314) 925-7444 Fax: (314) 925-7457  
Missouri Certificate of Authority # E-2001000031  
Missouri Certificate of Authority # LS-2012007649

**ENGINEERS AUTHENTICATION**

STATE OF MISSOURI  
SHEVA MARION  
NUMBER PE200400218  
PROFESSIONAL ENGINEER

STEVE MARSON P.E.  
ENGINEER  
PE200007915

**Developer / Owner Information**

T.M.  
**CROWLEY & ASSOCIATES**

Construction Details

P+Z No. 01-15 & 01:15:01  
APPROVED 1-15-15  
City No.

Sheet Number: 20

PCE PROJECT NO. 136101

W:\vault-pc\va\civil\3D PROJECTS\2013\136101 NEC FEISE AND BRYAN CONSTRUCTION DOCUMENTS\E\coston Control Details.dwg