

* Z = LUMINAIRE MOUNTING HEIGHT A.F.G.

LumNo	Label	X	Y	Z	Orient	Tilt
1	A	690.597	293.27	28	180	0
2	A	547.597	167.27	28	90	0
3	A	467.597	107.27	28	90	0
4	D90	633.597	367.27	28	270	0
5	D90	634.597	224.27	28	90	0
6	OB	479.597	362.27	9.33	0	0
7	OB	481.597	360.27	9.33	0	0
8	OB	484.597	367.27	9.33	0	0
9	OB	486.597	365.27	9.33	0	0
10	OC	571.697	240.57	18	0	0
11	S2	478.769	362.881	16.66	90	0
12	S6	574.339	377.316	16.66	90	0
13	S6	478.76	240.997	16.66	90	0
14	S6	523.843	237.899	16.66	0	0
15	S6	480.922	357.466	16.66	45	0
16	S6	485.151	381.708	16.66	45	0
17	S6	489.382	365.967	16.66	45	0
18	S6	493.621	370.205	16.66	45	0
19	S6	497.836	374.422	16.66	45	0
20	S6	502.044	378.638	16.66	45	0
21	S6	574.339	365.316	16.66	90	0
22	S6	574.339	371.316	16.66	90	0
23	S6	574.339	369.316	16.66	90	0
24	S6	574.339	363.316	16.66	90	0
25	S6	574.339	347.316	16.66	90	0
26	S6	574.339	341.316	16.66	90	0
27	S6	574.339	335.316	16.66	90	0
28	S6	574.339	329.316	16.66	90	0
29	S6	574.339	323.316	16.66	90	0
30	S6	574.339	317.316	16.66	90	0
31	S6	574.339	311.316	16.66	90	0
32	S6	574.339	299.316	16.66	90	0
33	S6	574.339	305.316	16.66	90	0
34	S6	574.339	293.316	16.66	90	0
35	S6	574.339	287.316	16.66	90	0
36	S6	478.76	246.997	16.66	90	0
37	S6	478.76	252.997	16.66	90	0
38	S6	478.76	258.997	16.66	90	0
39	S6	478.76	264.997	16.66	90	0
40	S6	478.76	270.997	16.66	90	0
41	S6	478.76	276.997	16.66	90	0
42	S6	478.76	282.997	16.66	90	0
43	S6	478.76	288.997	16.66	90	0
44	S6	478.76	294.997	16.66	90	0
45	S6	478.76	300.997	16.66	90	0
46	S6	478.76	306.997	16.66	90	0
47	S6	478.76	312.997	16.66	90	0
48	S6	478.76	318.997	16.66	90	0
49	S6	478.76	324.997	16.66	90	0
50	S6	478.76	330.997	16.66	90	0
51	S6	478.76	336.997	16.66	90	0
52	S6	478.76	342.997	16.66	90	0
53	S6	478.76	348.997	16.66	90	0
54	S6	517.843	237.899	16.66	0	0
55	S6	511.843	237.899	16.66	0	0
56	S6	505.843	237.899	16.66	0	0
57	S6	499.843	237.899	16.66	0	0
58	S6	493.843	237.899	16.66	0	0
59	S6	487.843	237.899	16.66	0	0
60	S6	481.843	237.899	16.66	0	0
61	WP	561.497	380.47	12	90	0
62	WP	536.497	380.47	12	90	0
63	WP	511.497	380.47	12	90	0
64	WS	567.197	237.57	7	315	0
65	WS	574.597	244.57	7	315	0

* HUBBELL IS NOT RESPONSIBLE FOR THE PERFORMANCE OF LUMINAIRE MANUFACTURED BY OTHERS

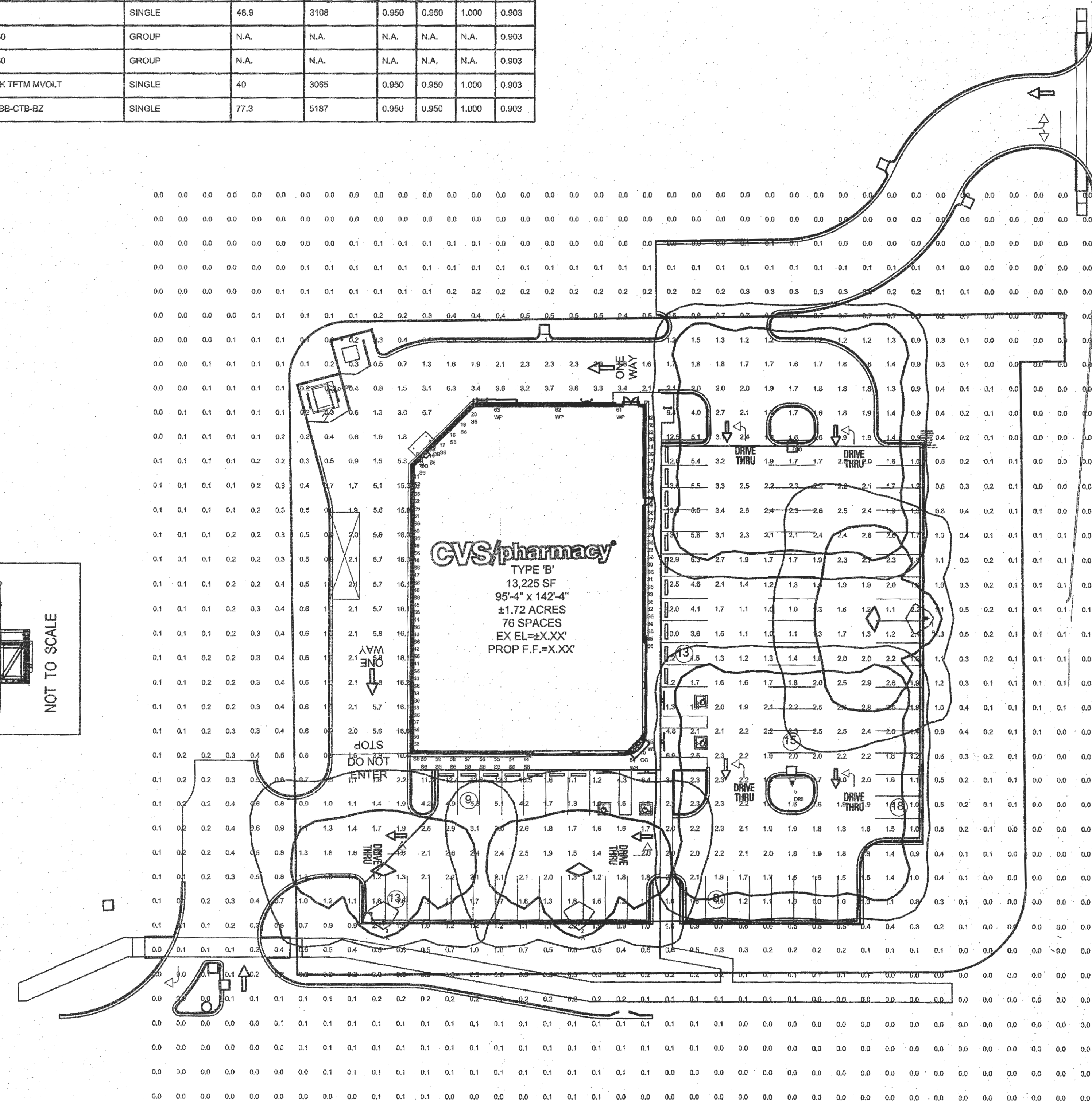
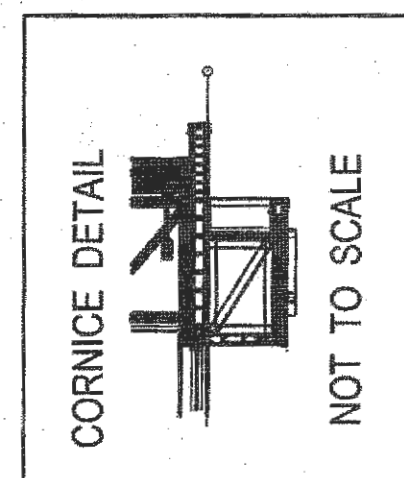
Symbol	Label	Qty	Description	Arrangement	Lum. Watts	Lum. Lumens	LMF	LDD	BF	LLF
→	A	3	CL1-60L-4K-4 (Hubbell Ltg)	SINGLE	141	12036	0.950	0.950	1.000	0.903
→	D90	2	CL1-90L-4K-5M (Hubbell Ltg)	SINGLE	207.8	18522	0.950	0.950	1.000	0.903
○	OB	4	PT2013-E0155	SINGLE	19.9	1130	0.950	0.900	1.000	0.855
○	OC	1	EVO 41/29 BAR 120	SINGLE	48.9	3108	0.950	0.950	1.000	0.903
—	S2	1	ECVLXWET-2-120-4K-2780	GROUP	N.A.	N.A.	N.A.	N.A.	N.A.	0.903
—	S6	49	ECVLXWET-6-120-4K-2780	GROUP	N.A.	N.A.	N.A.	N.A.	N.A.	0.903
■	WP	3	DSXW1 LED 10C 1000 40K TFTM MVOLT	SINGLE	40	3065	0.950	0.950	1.000	0.903
■	WS	2	AZ-5L-LED75-4K-(2)EJU-BB-CTB-BZ	SINGLE	77.3	5187	0.950	0.950	1.000	0.903

Label	Description	Units	Avg	Max	Min	Avg/Min	Max/Min
C-VS PARKING	1.0 FC MINIMUM	Fc	2.51	13.1	1.0	2.51	13.10

POLE SPEC FOR CIMARRON:

SINGLE FIXTURE
SSS-XX-XX-X-A2-XX

TWIN FIXTURE 180 DEGREE APART
SSS-XX-XX-X-C2-XX

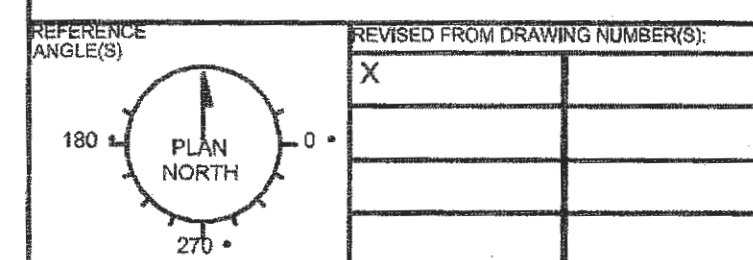
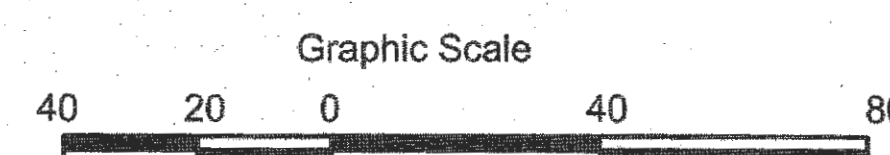


FOR PRICING CONTACT

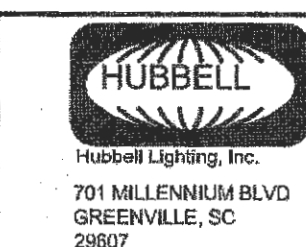
Weidenbach-Brown Co., Inc.
315 Norwood Park South
Norwood, MA 02062
Tel: 781-769-9868
Fax: 781-769-9832
E-Mail: CVSSUPPORT@WBLIGHT.COM

NOT A CONSTRUCTION DOCUMENT - FOR DESIGN PURPOSES ONLY

- THIS LIGHTING DESIGN IS BASED ON LIMITED INFORMATION SUPPLIED BY OTHERS TO HUBBELL LIGHTING. SITE DETAILS PROVIDED HEREON ARE REPRODUCED ONLY AS A VISUALIZATION AID. FIELD DEVIATIONS MAY SIGNIFICANTLY AFFECT PREDICTED PERFORMANCE. PRIOR TO INSTALLATION, CRITICAL SITE INFORMATION (POLE LOCATIONS, ORIENTATION, MOUNTING HEIGHT, ETC.) SHOULD BE COORDINATED WITH THE CONTRACTOR AND/OR SPECIFIER RESPONSIBLE FOR THE PROJECT.
- LUMINAIRE DATA IS TESTED TO INDUSTRY STANDARDS UNDER LABORATORY CONDITIONS. OPERATING VOLTAGE AND NORMAL MANUFACTURING TOLERANCES OF LAMP, BALLAST, AND LUMINAIRE MAY AFFECT FIELD RESULTS.
- CONFORMANCE TO FACILITY CODE AND OTHER LOCAL REQUIREMENTS IS THE RESPONSIBILITY OF THE OWNER AND/OR THE OWNER'S REPRESENTATIVE.



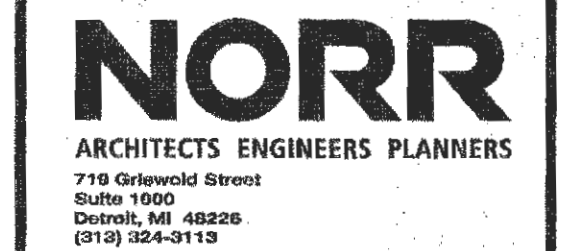
CVS #10546
O'FALLON, MO



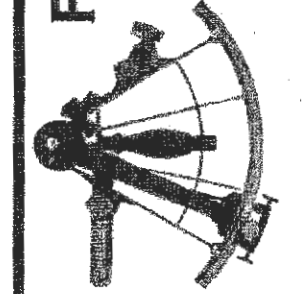
SCALE: 1" = 40'
DATE: 12/17/2014
DRAWING NO.: 1472795



PROJECT TITLE NORTHERN 13,225-RIGHT CHAMFER DRIVE-THRU STORE NUMBER: 10546
PROJECT TYPE: NEW CONSTRUCTION
DEAL TYPE: Fee for Service
CS PROJECT NUMBER: 69591



PREMIER CIVIL ENGINEERING



308 TOWN Court
Lake St. Suite 100
Phone: (314) 926-7144 Fax: (314) 926-7467
Missouri Certificate of Authority # E-2011000031
Missouri Certificate of Authority # LS-2012007849

ENGINEERING AUTHENTICATION
The responsibility for professional engineering liability on this project is hereby limited to the set of plans authenticated by the seal, signature, and date hereon attached. Responsibility is disclaimed for all other engineering plans included in the project and specifically excludes revisions after the date when authenticated.

Developer / Owner Information

T.M. CROWLEY & ASSOCIATES

Photometric Plan

P+Z No. 01-15 & 01:05
APPROVED 1-15-15
City No.

Sheet Number:
PH-1

PCE PROJECT NO. 136101

\\vaault-pc\vaault\CIVIL_3D\PROJECTS\2013\136101_NEC FEISE AND BRYAN\CONSTRUCTION DOCUMENTS\PHOTOMETRIC PLAN.dwg



NOTE:
Underground utilities and structures have been plotted from available information and therefore, their location must be considered approximate only. It is the responsibility of the individual contractors to notify the utility companies before actual construction.