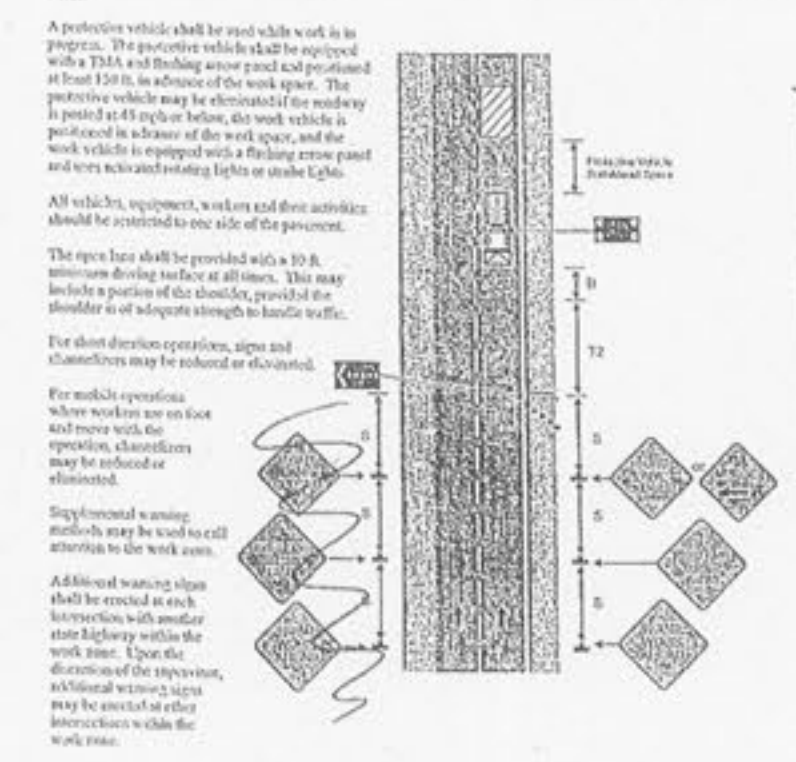




Lane Closure on Left or Right Lane on Divided Highway

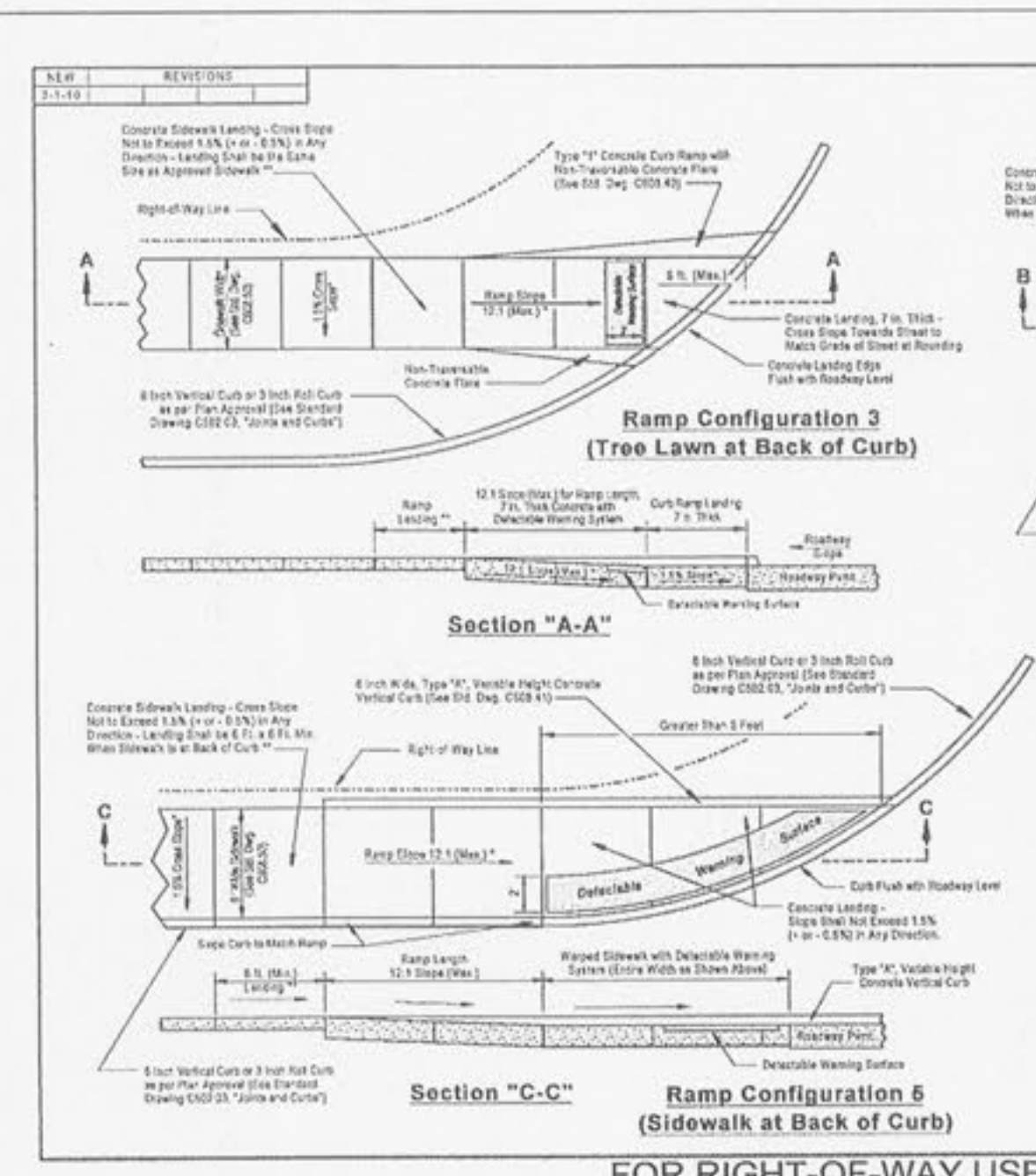
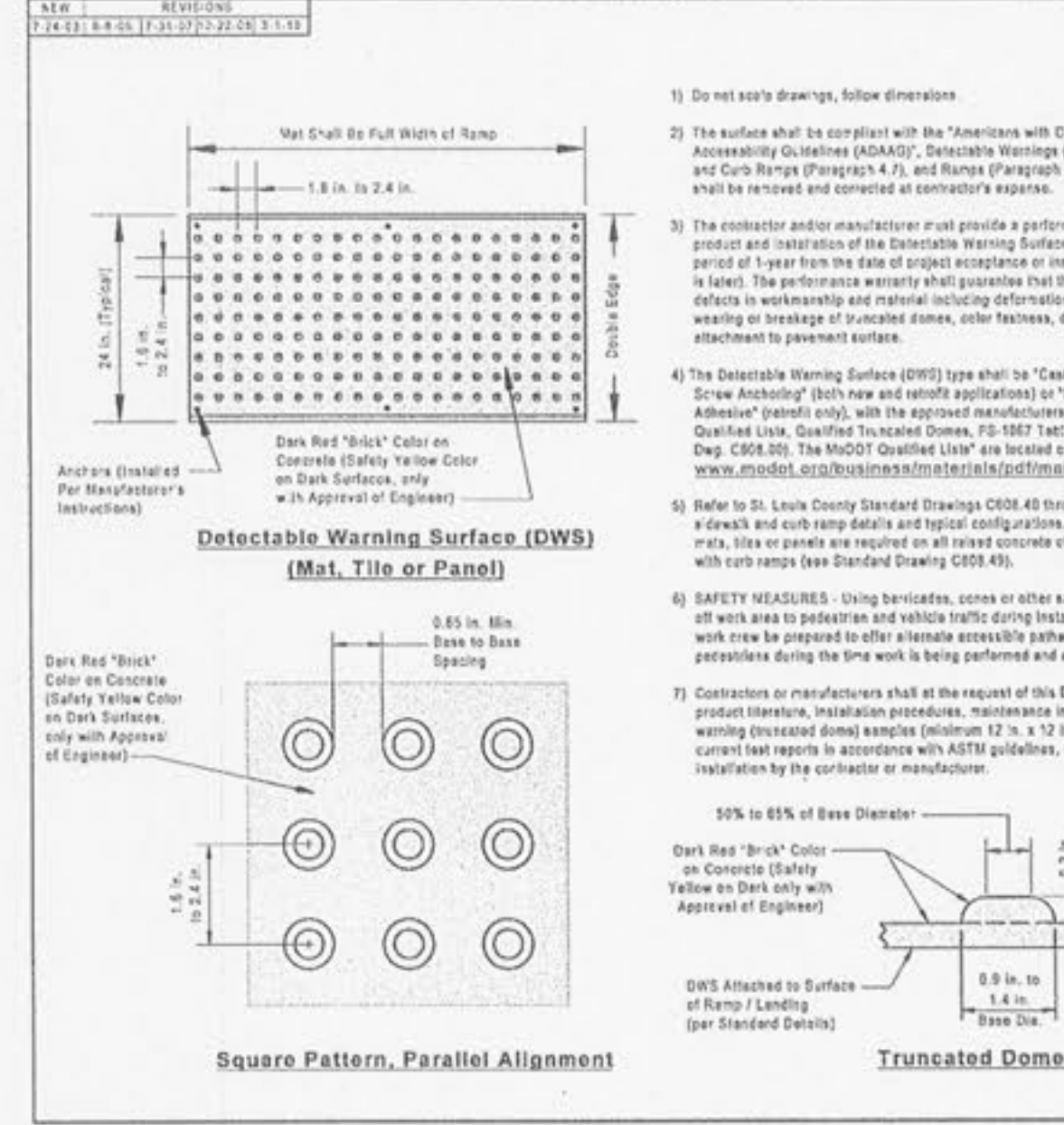
SPEED (mi/h)	LANE WIDTH (ft)	LANE LENGTH (ft)	LANE TYPE	CLOSURE LENGTH (ft)		CLOSURE WIDTH (ft)	
				MINIMUM	MAXIMUM	MINIMUM	MAXIMUM
30	12	100	1	100	150	10	15
35	12	100	1	100	150	10	15
40	12	100	1	100	150	10	15
45	12	100	1	100	150	10	15
50	12	100	1	100	150	10	15
55	12	100	1	100	150	10	15
60	12	100	1	100	150	10	15
65	12	100	1	100	150	10	15
70	12	100	1	100	150	10	15
75	12	100	1	100	150	10	15
80	12	100	1	100	150	10	15
85	12	100	1	100	150	10	15
90	12	100	1	100	150	10	15
95	12	100	1	100	150	10	15
100	12	100	1	100	150	10	15



NO LANE CLOSURES ARE TO OCCUR FROM 7 AM TO 9 AM AND 3 PM TO 6 PM

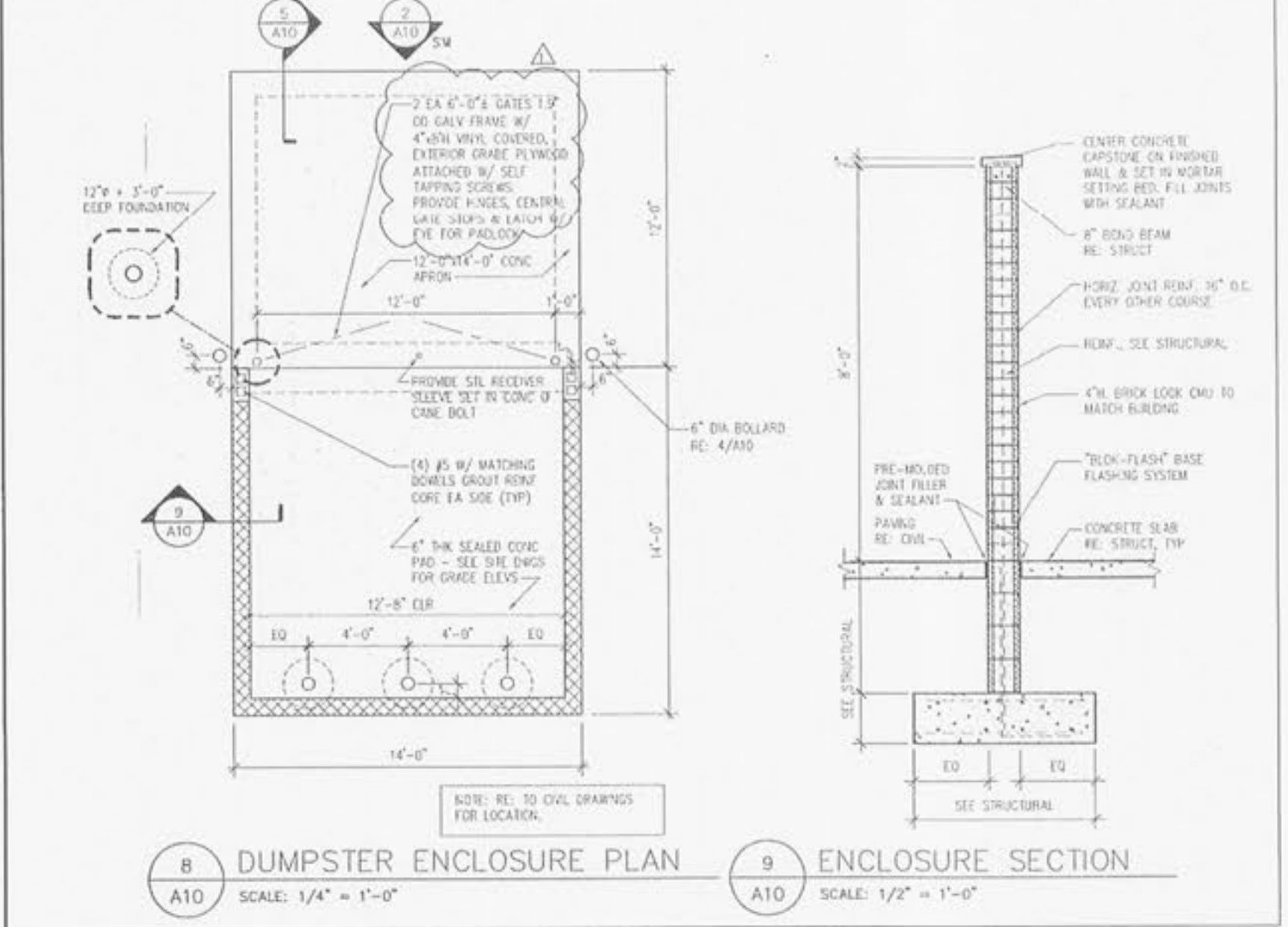
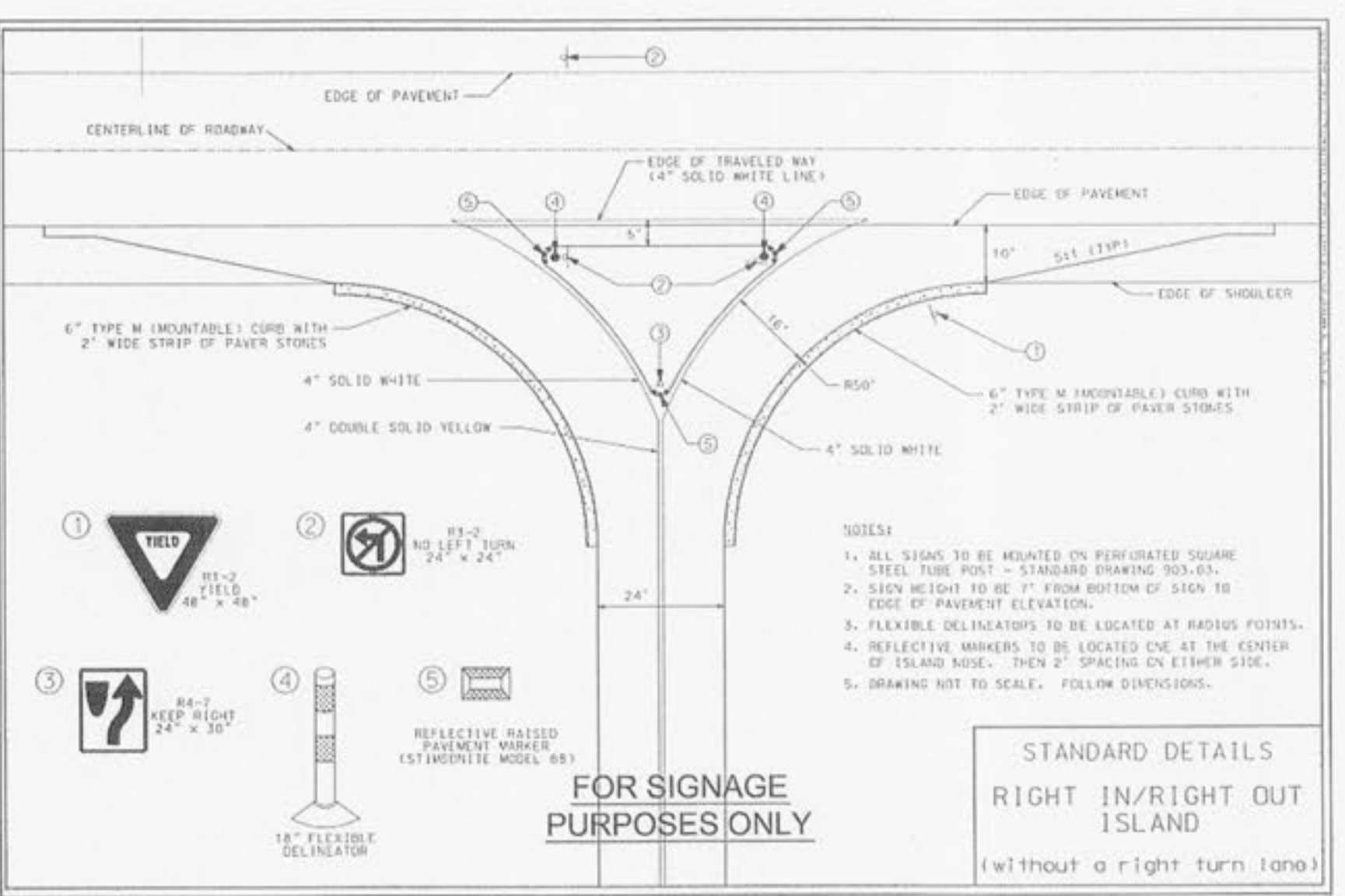
General Notes

- Do not scale drawings, follow dimensions.
- The surface shall be compliant with the Americans with Disabilities Act Accessibility Guidelines (ADAAG), Detectable Warnings (Paragraph 4.02), and Curb Ramps (Paragraph 4.01), and Slopes (Paragraph 4.03). No component shall be removed or concealed at contractor's expense.
- The contractor and/or manufacturer must provide a performance warranty on the product and installation of the Detectable Warning Surface (DWS) for a minimum period of 1 year from the date of project acceptance or installation (whichever date is later). The performance warranty shall guarantee that the DWS is free from defects in workmanship and material including deformation, cracking, excessive wear or loss of truncated domes, color fading, delamination, or detachment to pavement surface.
- The Detectable Warning Surface (DWS) type shall be "Cast-In-Place with Adhesive" (patent only), with the approved manufacturer listed on the "MATERIALS" section of this drawing. The DWS shall consist of 24 inches in the direction of travel and span the full width of the curb ramp (inclusive of flares). Installation procedures (see manufacturer) shall be comprehensive throughout the entire surface (both on-grade surface, on light-on-dark surface), with a slip resistant surface (both on-grade surface, on light-on-dark surface). Truncated domes shall be aligned parallel to the running slope of a ramp, in a square grid, when installed in the direction of pedestrian travel, in parallel with the curb. The DWS shall be installed 4 in. to 6 in. from the face of curb, the full width of the ramp (max. of 2 in. from each side of the ramp or landing - see Detail "A" on this drawing). DWS in cut-through islands shall be installed full width, aligned with the face of the cut-through island curb (see Det. C608.45).
- The DWS, truncated dome mat, tile or panels used, shall be consistent throughout the project and are required to be installed on all curb ramps at public and private access intersections, signalized intersections, and uncontrolled and unmarked islands where a curb ramp or cut-through is installed. DWS shall be installed on curb ramps adjacent to public entrances. The DWS type and location shall be approved by the Engineer prior to installation. No direct payment will be made for detectable warning surfaces.
- Truncated dome mat, tile or panels shall be a cast-in-place product (pre-encapsulated or surface applied product application), and approved by the project engineer prior to usage. Tiles or mats shall be pre-formed or pre-cast and installed per manufacturer's recommendations and instructions. Stamped concrete truncated domes or grooves will not be accepted.

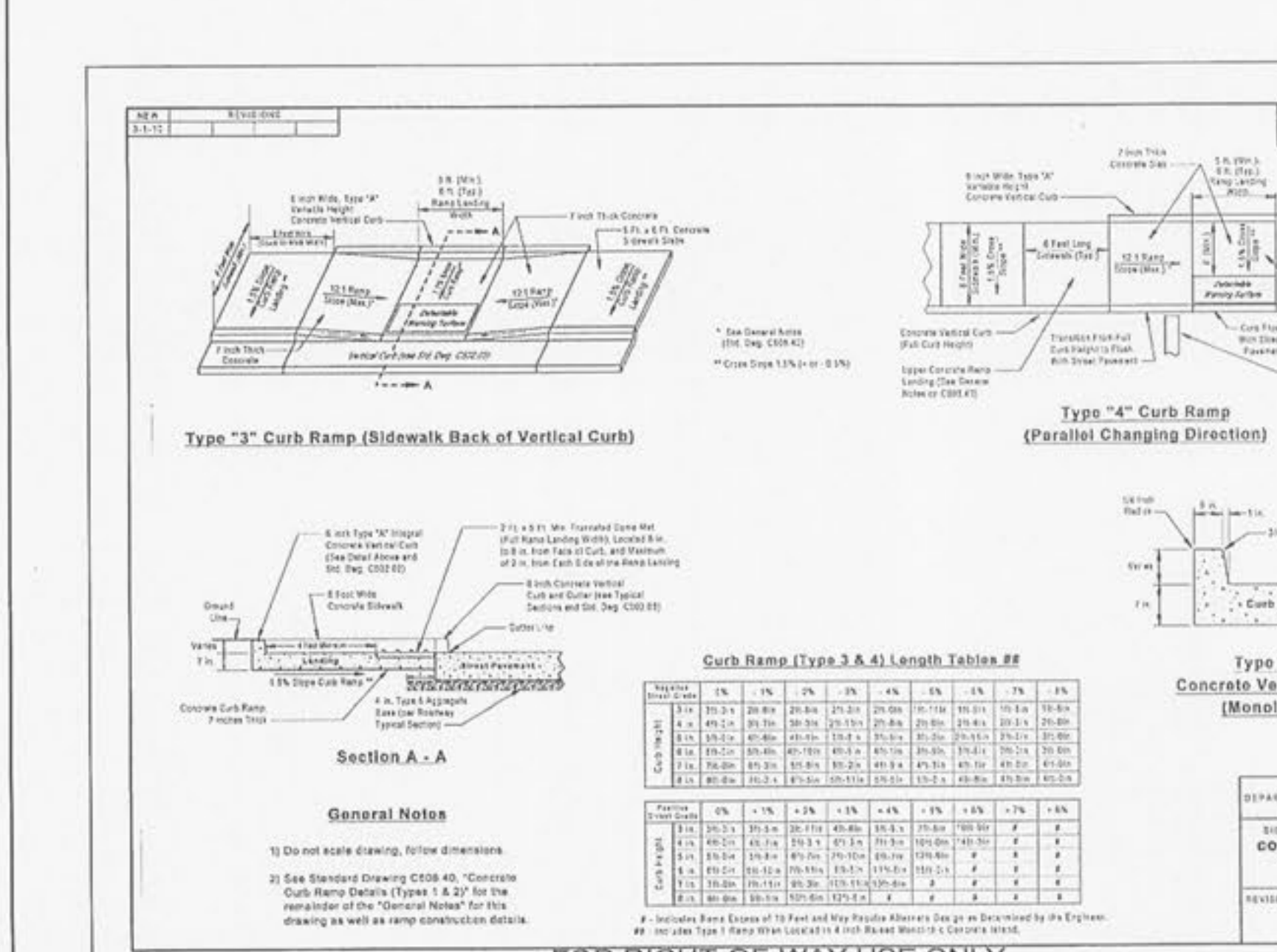


SAINT JUDY COUNTY
DEPARTMENT OF HIGHWAYS AND TRAFFIC
CLAYTON, MISSOURI
SIDEWALK & CURB RAMP DETAILS
DETECTABLE WARNING SURFACE
FOR NEW CONSTRUCTION AND
RETRIBUTING OF CURB RAMPS
REVISION DATE: March 1, 2010 DRAWING
C608.51

SAINT JUDY COUNTY
DEPARTMENT OF HIGHWAYS AND TRAFFIC
CLAYTON, MISSOURI
SIDEWALK & CURB RAMP DETAILS
DETECTABLE WARNING SURFACE
FOR NEW CONSTRUCTION AND
RETRIBUTING OF CURB RAMPS
REVISION DATE: March 1, 2010 DRAWING
C608.44



SEE ARCHITECTURAL PLANS
N.T.S.



FOR RIGHT-OF-WAY USE ONLY

