

**HALL CONSTRUCTION PRODUCTS AND SERVICES**  
P. O. Box 1392, South Glens Falls, NY 12003  
(518) 747-7047

**DURASLOT® Drains - Shipping & Handling**

Most DURASLOT orders ship LTL from the HGPS plant in Hudson Falls, NY, 12003. The majority of these orders consist of only one size of pipe. For this type of order HGPS will handle the ten foot lengths into groups of 2-3 pieces, weighing from 65' - 155' (2 pcs. of 4' - 3 pcs. of 12'). Pipes of 18" diameter or larger is shipped individually. These orders generally arrive in a two trailer and are best unloaded by hand - two men can easily handle all handles.

The handles are held together by the wire which is combined between two layers of duct tape to protect the plastic pipe. The customer should be aware that the tape will not tear, the wire needs to be cut. When pipes are cut LTL, the fittings and hardware are generally sent UPS. These will usually arrive a day or two before the pipe. The UPS packages will have all the paperwork including bill of lading, order copy, assembly details, and installation notes) except the original bill of lading which comes with the pipe.

For orders with more than one pipe size (example: 18" and 24") when possible, HGPS will nest smaller pipe in larger pipe. In this case, the larger pipe will hold a 12" or 18" which allows the customer to unload by hand. Some fittings may be included in the pallet, but generally, fittings and hardware will ship UPS. The paperwork will be in the UPS box, the customer should be reminded to keep the order copy to check against the material on the pallet(s) or skids when it arrives.

**For Truckload Deliveries:** When an order for a truckload of DURASLOT is booked, all fittings and hardware are packed with that truck. The fittings are generally strapped to the upper level of a standard trailer, and the hardware is boxed separately. The pipe will be stacked in four pipes, ten feet long in 4' x 4' cross pieces. These allow an iron strap to be slid under the stack, and wrapped around it. The whole stack of pipe can be unloaded by a crane or any machine that can run the iron strap to lift the pipe off the truck. Metal chains or any other material which could damage the pipe are not recommended for lifting DURASLOT off the truck. We also do not recommend using a forklift for DURASLOT that is not on a pallet or skid. DURASLOT should never be pushed off the side of the truck - it is not flexible like regular HDPE pipe!

Dia.	Approximate Truck Load Quantities	6" Skid
4"	2,132	584
6"	1,800	500
8"	1,500	400
10"	1,200	300
12"	1,000	250
14"	800	200
16"	600	150
18"	400	100
20"	300	75
24"	200	50

(N = not a standard size - check with HGPS)

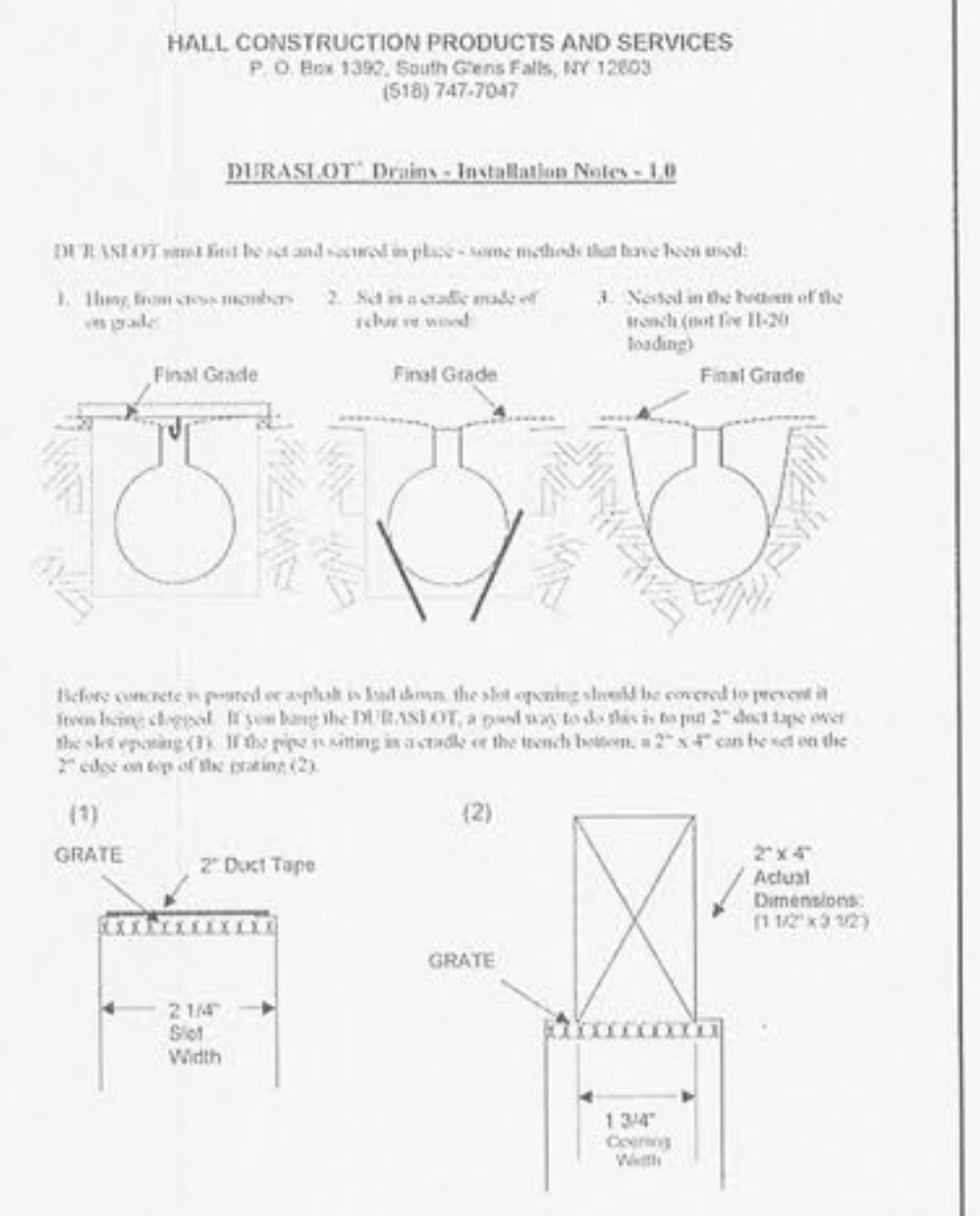
**HALL CONSTRUCTION PRODUCTS AND SERVICES**  
P. O. Box 1392, South Glens Falls, NY 12003  
(518) 747-7047

**DURASLOT® Drains - Installation Notes - 2.0**

When pouring concrete around DURASLOT, especially when the pipe is sitting in a shallow pour down on the spot where the pipe meets the slot (X) (during cure to keep the slot upright) this type of pour will provide some downward force (Y) that will serve to keep the pipe from floating due to upward force (Z) in the concrete fill the trench.

The top of the DURASLOT at the slot opening should always be set 1/8" to 1/4" below finished grade. This allows surface runoff to enter the slot efficiently and prevents the grate and flanges from warping and the pipe, a nation's best can be used to level the edge after the pipe or 2" x 4" has been removed.

It is important that all fittings and hardware are used when DURASLOT is installed. The product is designed as a system; all grate connectors and hardware must be used to keep the grate in position, and to tie the ends of the grate into concrete or asphalt. At the end of each run an end cap or adapter should always be utilized (these include the end cap). Only DURASLOT Couplers should be used to join sections of DURASLOT. See the Assembly Details or call HGPS at (518) 747-7047 with any questions.



**HALL CONSTRUCTION PRODUCTS AND SERVICES**  
P. O. Box 1392, South Glens Falls, NY 12003  
(518) 747-7047

**DURASLOT® Installation Practices**

DURASLOT surface drains are made from a flexible comb, which is designed to attain its structural strength utilizing ring compression derived from soil pressure. For this to occur, a minimum height of cover is required. Since this is not possible, the drain must be backfilled with concrete to allow for access vehicular traffic. This is true of any pipe with an inlet mounted on top to form this type of surface drain. The pipe cannot function in the manner for which it was designed when it is installed this close to the surface. The concrete-filled trench provides the actual structure for this type of design.

Following are some of the most often utilized installation details for DURASLOT surface drains:

(A) Heavy Traffic - completely surrounded by concrete for critical loading applications. This would include frequent high speed 10-20 mph traffic, such as a highway. The dimensions "X" and "Y" are generally 3" to 6" depending on the specific conditions for the project (design layout, traffic pattern, soil properties, etc.)

(B) Moderate Traffic - surrounded by concrete to below the center of the pipe. This type of installation has been used when traffic loads are not as heavy (i.e., retail parking lots, against curbs, etc.). The soil below the pipe and concrete must be high quality and well compacted.

**CVS pharmacy**

**PROJECT TITLE:** NORTHERN 13,225-LEFT CHAMFER DRIVE-THRU STORE NUMBER: 6477

**SEC. HIGHWAY N AND HIGHWAY K D'ALLAIN, MD**

**PROJECT TYPE:** NEW CONSTRUCTION

**DEAL TYPE FEE FOR SERVICE:** CS PROJECT NUMBER: 57110

**PREMIER CIVIL ENGINEERING**

Wentzville  
1166 Wentzville Parkway Suite 103  
Wentzville, MO 63385

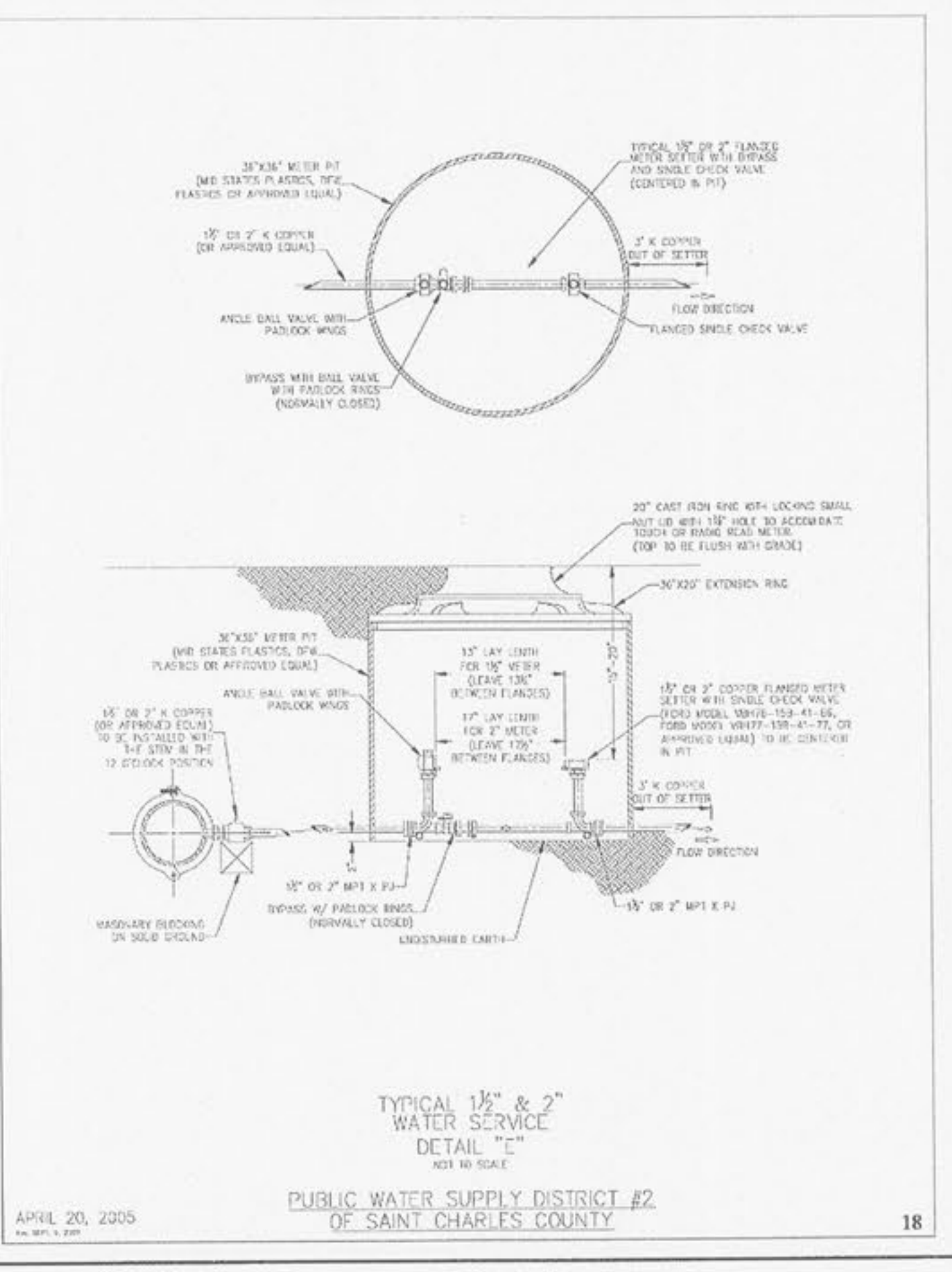
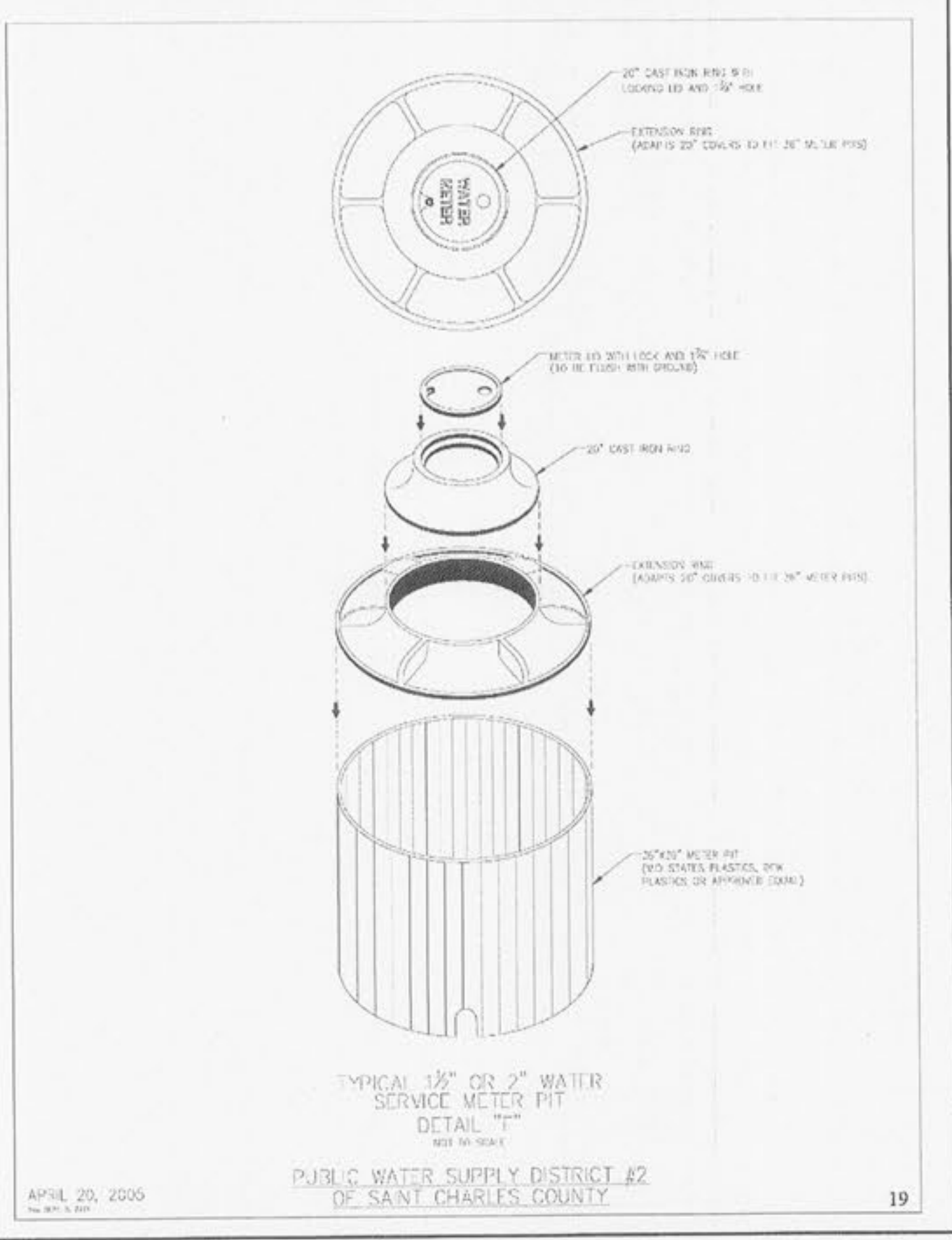
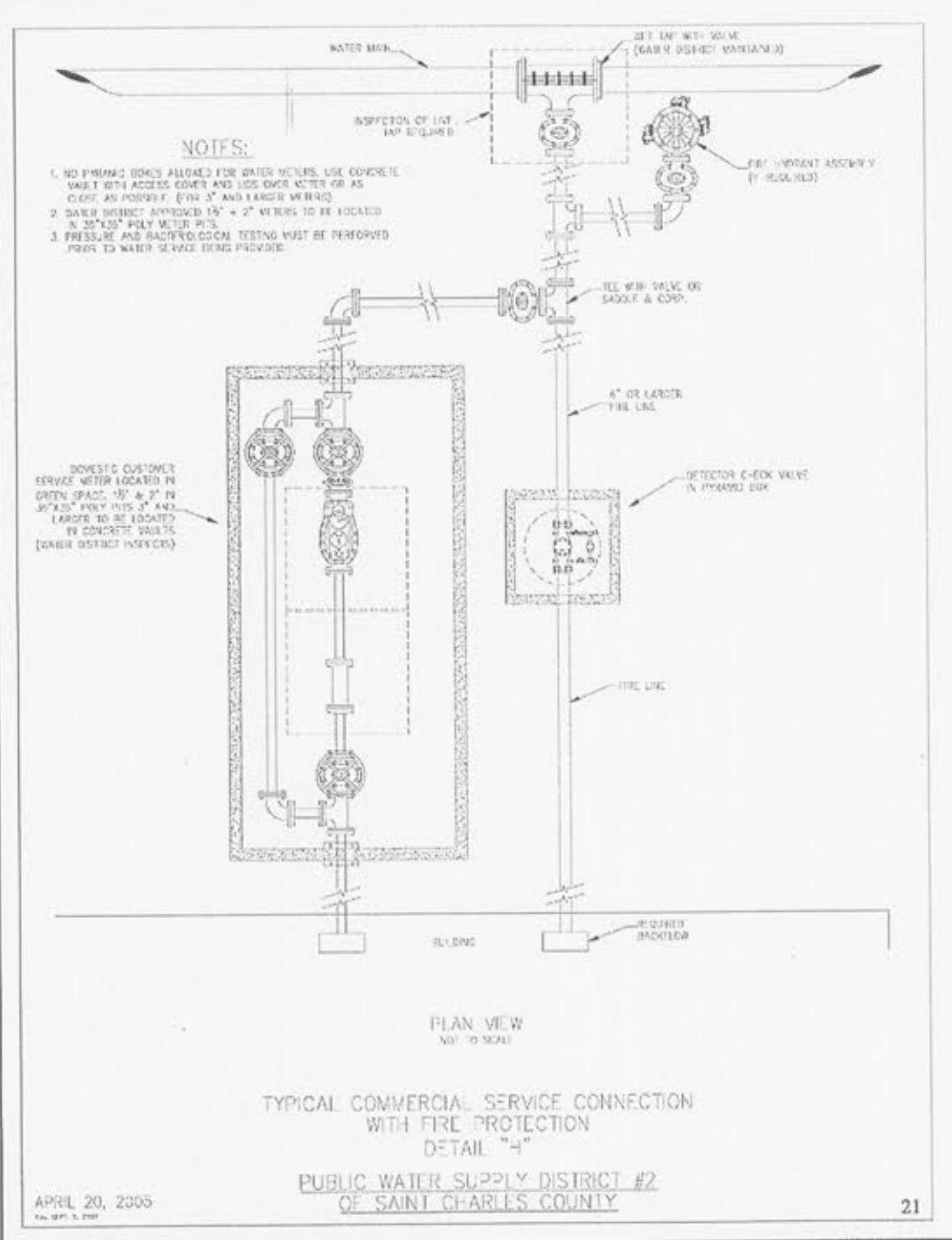
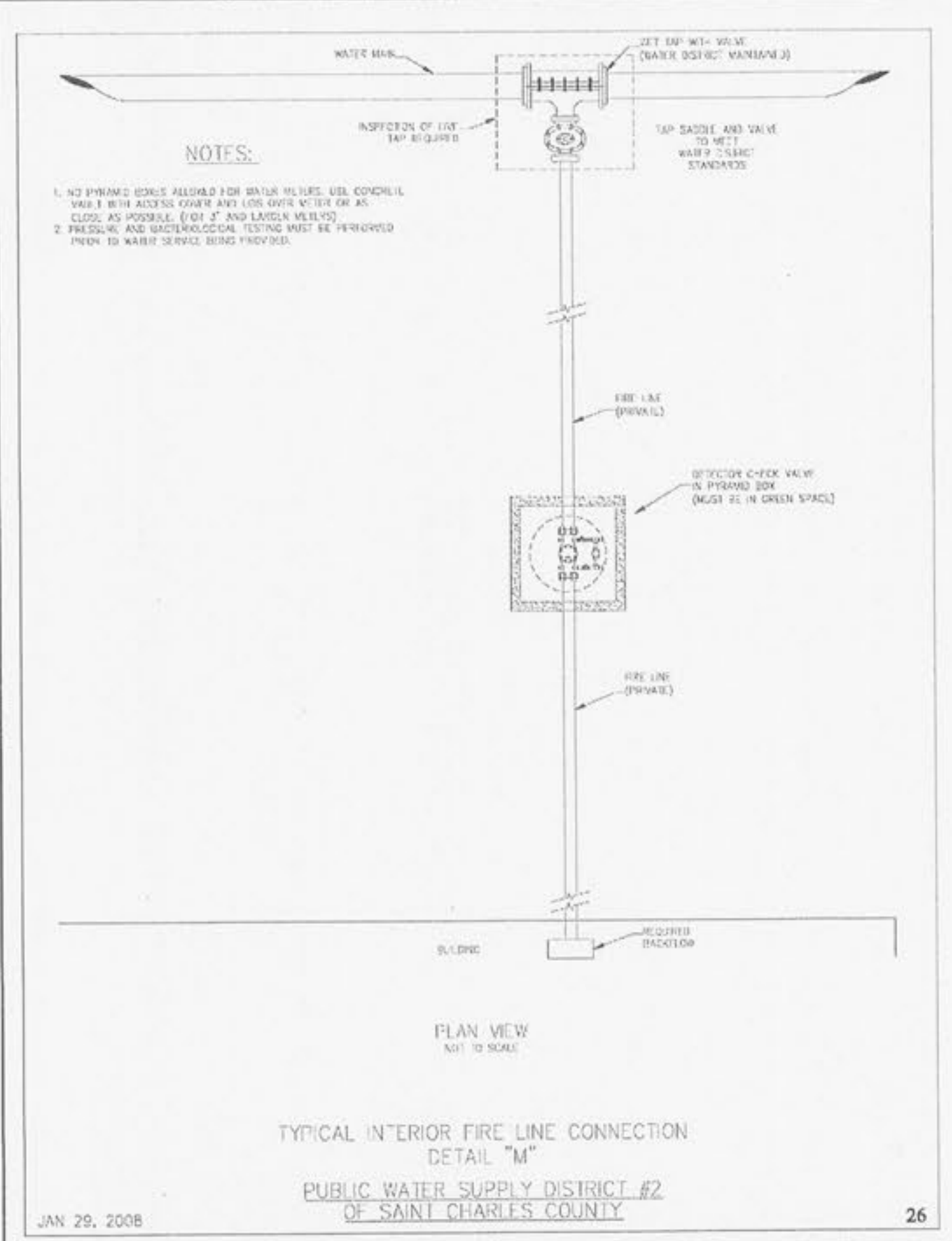
Phone (314) 925-7444 Fax (314) 925-7457

Premier Civil Engineering  
Missouri State Certificate of Authority #LC0951128

**ENGINEERS AUTHENTICATION**

The responsibility for professional engineering liability on this project is hereby limited to the set of plans authorized by the seal, signature, and date hereunder attached. Responsibility is disclaimed for all other engineering plans involved in this project and specifically excludes reviewers other than those enumerated below.

STEVE MARION P.E.  
ENGINEER  
PE200027165



**Developer / Owner Information**

CEDARWOOD DEVELOPMENT, INC.  
1766 MERRIMAN ROAD  
AKRON, OH 44313  
CONTACT: RON DINARDO  
OFFICE: (330) 636-9871

**Utility Details**

P+Z No. 26-11  
APPROVED 12.1.11  
City No.

Sheet Number: 19

\\STORAGE1\server\CIVIL 3D PROJECTS\100901\DWG\IMPROVEMENT PLANS\HWY N AND HWY K DES 12-9-11.dwg, 2/22/2012 9:17:06 AM, KP, 6000.pcd