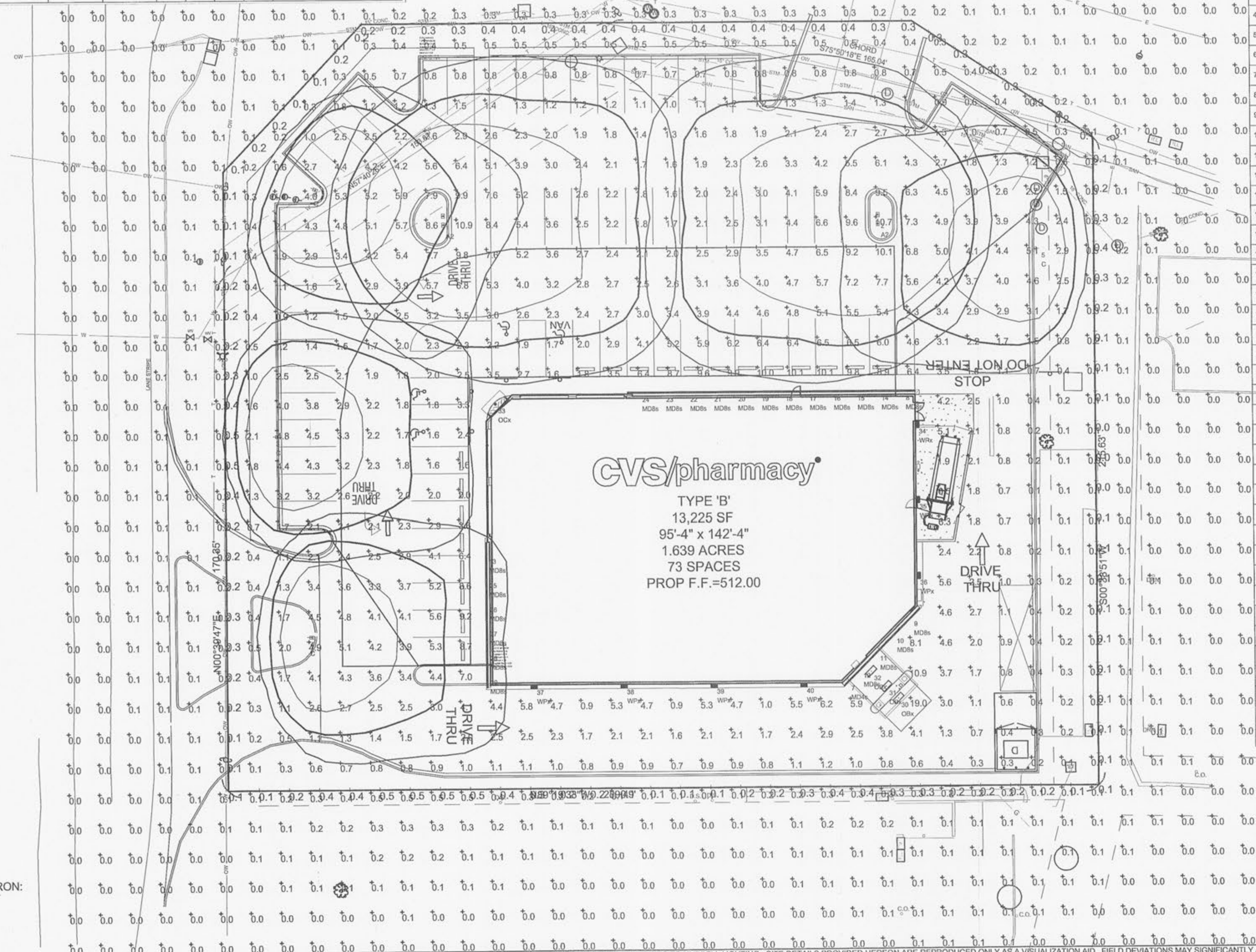


NOT A CONSTRUCTION DOCUMENT - FOR DESIGN PURPOSES ONLY

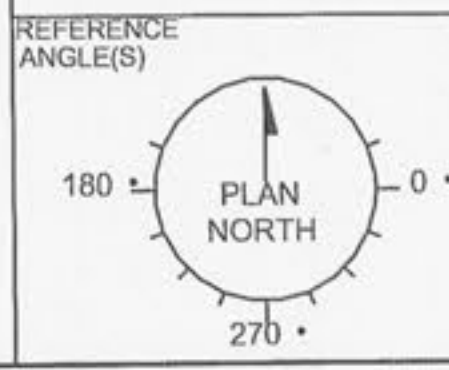
Symbol	Label	Qty	Description	Arrangement	Total Watts	Lumens/Lamp	LLD	LLD	RF	LLF	Filename
MDs	MDs	22	QTY 2 - C 1 32 MVOLT GEB10S	GROUP	1408	N.A.	N.A.	N.A.	N.A.	0.752	N.A.
MDs	MDs	1	C 1 32 MVOLT GEB10S	SINGLE	32	3100	0.950	0.900	0.880	0.752	C_1_32_TUBI.ies
OBx	OBx	3	2GT8 2 32 A12 120 ADDE	SINGLE	174	3100	0.950	0.900	0.880	0.752	2GT8_2_32_A12_120_ADDE.ies
OCx	OCx	1	AH 70MHC GAR	SINGLE	94	5700	0.720	0.950	0.950	0.650	AH_70MHC_GAR-1.ies
WPx	WPx	7	WFL2 70M FT	SINGLE	665	6000	0.740	0.950	0.950	0.650	WFL2_70M_FT.ies
A2	A2	2	QTY 2 CR1-P40-H4 (Hubbell Ltg)	ROTATED OPTICS	1812	31000	0.720	0.950	0.950	0.650	CR1-P40-H4.HES
C	C	4	CR1-P40-H4-HS (Hubbell Ltg)	SINGLE	1812	31000	0.720	0.950	0.950	0.650	CR1-P40-H4-HS.HES

LumNo	Label	X	Y	Z	Orient	Tilt
1	A2	512.646	352.737	33	0.332	0
2	A2	657.618	352.239	33	179.256	0
3	C	455.721	280.897	33	0	0
4	C	488.493	214.534	33	358.543	0
5	C	711	342	33	160	0
6	C	469	364	33	333.435	0
7	MDs	646.4	198.7	18	45	0
8	MDs	665.5	294.7	18	0	0
9	MDs	657.5	219.8	18	45	0
10	MDs	661.8	214.2	18	45	0
11	MDs	656.2	208.5	18	45	0
12	MDs	650.6	202.9	18	45	0
13	MDs	626.1	241.5	18	90	0
14	MDs	657.5	294.7	18	0	0
15	MDs	649.5	294.7	18	0	0
16	MDs	641.5	294.7	18	0	0
17	MDs	633.5	294.7	18	0	0
18	MDs	625.5	294.7	18	0	0
19	MDs	617.5	294.7	18	0	0
20	MDs	609.5	294.7	18	0	0
21	MDs	601.5	294.7	18	0	0
22	MDs	593.5	294.7	18	0	0
23	MDs	585.5	294.7	18	0	0
24	MDs	577.5	294.7	18	0	0
25	MDs	526.1	233.5	18	90	0
26	MDs	526.1	225.5	18	90	0
27	MDs	526.1	217.5	18	90	0
28	MDs	526.1	209.5	18	90	0
29	MDs	526.1	201.5	18	90	0
30	OBx	663	193	9.33	45	0
31	OBx	659	197	9.33	45	0
32	OBx	654	202	9.33	45	0
33	OCx	529.5	291.3	18	0	0
34	WPx	669.7	283.5	12	0	0
35	WPx	669.7	258.5	12	0	0
36	WPx	669.7	233.5	12	0	0
37	WPx	541.5	198	12	270	0
38	WPx	571.5	198	12	270	0
39	WPx	601.5	198	12	270	0
40	WPx	631.5	198	12	270	0



THIS STUDY DOES NOT MEET THE STANDARDS FOR ILLUMINATION SET BY CVS, DUE TO STRICT REGULATORY REQUIREMENTS

1. THIS LIGHTING DESIGN IS BASED ON LIMITED INFORMATION SUPPLIED BY OTHERS TO HUBBELL LIGHTING. SITE DETAILS PROVIDED HEREON ARE REPRODUCED ONLY AS A VISUALIZATION AID. FIELD DEVIATIONS MAY SIGNIFICANTLY AFFECT PREDICTED PERFORMANCE. PRIOR TO INSTALLATION, CRITICAL SITE INFORMATION (POLE LOCATIONS, ORIENTATION, MOUNTING HEIGHT, ETC.) SHOULD BE COORDINATED WITH THE CONTRACTOR AND/OR SPECIFIER RESPONSIBLE FOR THE PROJECT.
 2. LUMINAIRE DATA IS TESTED TO INDUSTRY STANDARDS UNDER LABORATORY CONDITIONS. OPERATING VOLTAGE AND NORMAL MANUFACTURING TOLERANCES OF LAMP, BALLAST, AND LUMINAIRE MAY AFFECT FIELD RESULTS.
 3. CONFORMANCE TO FACILITY CODE AND OTHER LOCAL REQUIREMENTS IS THE RESPONSIBILITY OF THE OWNER AND/OR THE OWNER'S REPRESENTATIVE.



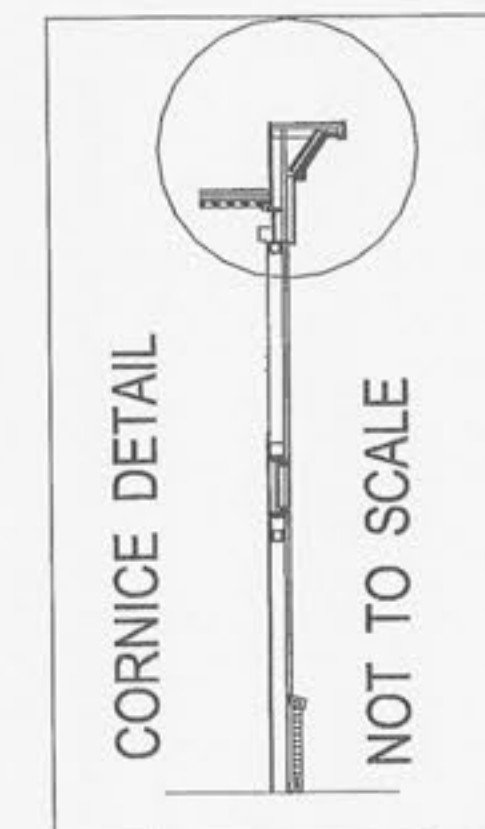
REFERENCE ANGLE(S)	REVISED FROM DRAWING NUMBER(S)	TITLE
	X	

CVS #6477
O'FALLON, MO



SCALE 1" = 40'	DATE 10/27/2011
DWN ADC	APVD
DRAWING NO. 1156750	

Label	Description	Units	Avg	Max	Min	Avg/Min	Max/Min
PROPERTY LINE	0.5 FC MAXIMUM	Fc	0.24	0.5	0.0	N.A.	N.A.
50 FT RADIUS	3.0 FC MINIMUM	Fc	4.18	10.1	1.8	2.81	6.31
CVS PARKING	1.5 FC MINIMUM	Fc	3.67	10.9	0.6	6.12	18.17



POLE SPEC FOR CIMARRON:
SINGLE FIXTURE
SSS-XX-XX-X-A2-XX
TWIN FIXTURE 180 DEGREE APART
SSS-XX-XX-X-C2-XX

FOR PRICING CONTACT
Weidenbach-Brown Co., Inc.
315 Norwood Park South
Norwood, MA 02062
Tel: 781-769-9868
Fax: 781-769-9832
E-Mail: CVSSUPPORT@WBLIGHT.COM

CVS pharmacy
NORTHERN 13,225-LEFT CHAMFER DRIVE-THRU STORE NUMBER 6477
SEC HIGHWAY N AND HIGHWAY K O'FALLON, MO
PROJECT TYPE: NEW CONSTRUCTION
DEAL TYPE: FEE FOR SERVICE
CS PROJECT NUMBER: 57110

PREMIER CIVIL ENGINEERING
Wentzville
1158 Wentzville Parkway, Suite 103
Wentzville, MO 63385
Phone (314) 925-7444 Fax (314) 925-7457
Premier Civil Engineering
Missouri State Certificate of Authority #CO951128

Developer / Owner Information
CEDARWOOD DEVELOPMENT, INC
1765 MERRIMAN ROAD
AKRON, OH 44313
CONTACT: RON DINARDO
OFFICE: (330) 836-9871

Photometrics Plan

P+Z No. 26-11
APPROVED 12.11
City No.
Sheet Number:
PH-1

\\STORAGE1\Server\Civil_3D\PROJECTS\109901\DWG\IMPROVEMENT PLANS\HWY N AND HWY K DES 12-9-11.dwg - 2/22/2012 9:16:44 AM, KP 6000.pcd