

ALTA/ACSM LAND TITLE SURVEY  
 A TRACT OF LAND BEING PART OF U.S. SURVEY 67  
 AND FRACTIONAL SECTION 9, TOWNSHIP 46 NORTH,  
 RANGE 3 EAST, CITY OF O'FALLON,  
 ST. CHARLES COUNTY, MISSOURI

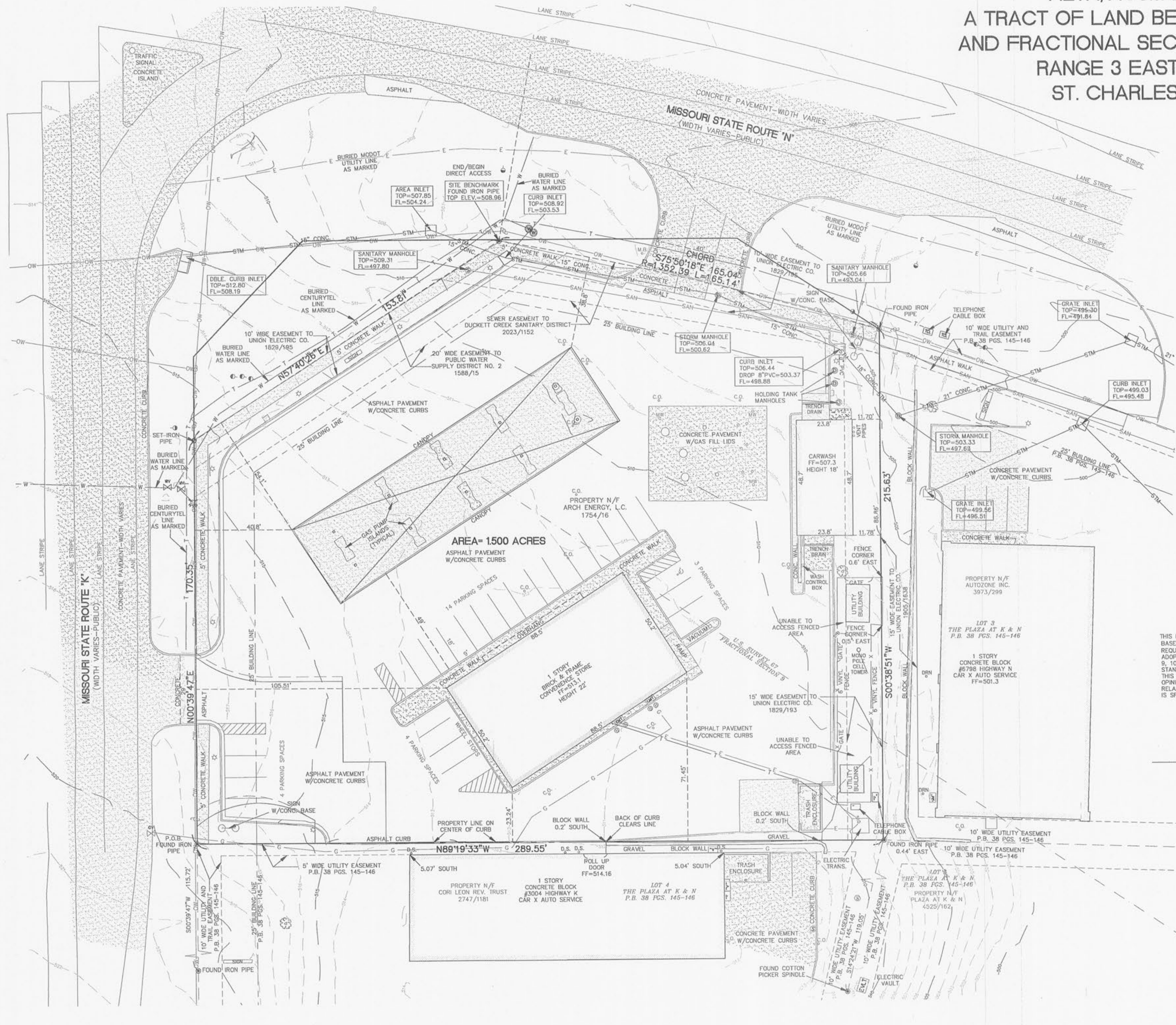


PROJECT TITLE  
 NORTHERN 13,225-LEFT  
 CHAMFER DRIVE-THRU  
 STORE NUMBER: 6477  
 SEC HIGHWAY N AND HIGHWAY K  
 O'FALLON, MO  
 PROJECT TYPE NEW CONSTRUCTION  
 DEAL TYPE FEE FOR SERVICE  
 CS PROJECT NUMBER: 57110

LEGEND

|          |                          |
|----------|--------------------------|
| [Symbol] | FIRE HYDRANT             |
| [Symbol] | WATER VALVE              |
| [Symbol] | WATER METER VAULT        |
| [Symbol] | IRRIGATION CONTROL VALVE |
| [Symbol] | GAS VALVE                |
| [Symbol] | GAS METER                |
| [Symbol] | LIGHT STANDARD           |
| [Symbol] | CLEAN OUT                |
| [Symbol] | SANITARY SEWER MANHOLE   |
| [Symbol] | STORM SEWER MANHOLE      |
| [Symbol] | STORM SEWER INLET        |
| [Symbol] | PIPE BOLLARD             |
| [Symbol] | SIGN                     |
| [Symbol] | BUSH                     |
| [Symbol] | TREE                     |
| [Symbol] | PARKING METER            |

SCALE: 1" = 20'  
 0' 10' 20' 40'



THIS IS TO CERTIFY THAT THIS MAP OR PLAT AND THE SURVEY ON WHICH IT IS BASED WERE MADE IN ACCORDANCE WITH "MINIMUM STANDARD DETAIL REQUIREMENTS FOR ALTA/ACSM LAND TITLE SURVEYS," JOINTLY ESTABLISHED AND ADOPTED BY ALTA AND NSPS IN 2011, AND INCLUDES ITEMS 1, 2, 3, 4, 6, 7, 8, 9, 10, 11A AND 13 OF TABLE A THEREOF, PURSUANT TO THE ACCURACY STANDARDS AS ADOPTED BY ALTA AND NSPS AND IN EFFECT ON THE DATE OF THIS CERTIFICATION. UNDERSIGNED FURTHER CERTIFIES THAT IN MY PROFESSIONAL OPINION, AS A LAND SURVEYOR REGISTERED IN THE STATE OF MISSOURI, THE RELATIVE POSITIONAL ACCURACY OF THIS SURVEY DOES NOT EXCEED THAT WHICH IS SPECIFIED THEREIN.

DENNIS C. FRAZIER  
 FRAZIER LAND SURVEYING SERVICES, INC.  
 MISSOURI PROFESSIONAL LAND SURVEYOR #2002000247

DATE: 10/18/11  
 SCALE: 1"=20'  
 PROJECT NO: 11-1140  
 FILE NAME: 11-1140.DWG

FRAZIER LAND SURVEYING SERVICES, INC.  
 705 BALLANTRAE DRIVE  
 WENTZVILLE, MO. 63385  
 PHONE: 636-332-0610  
 FAX: 636-332-0710

PREMIER CIVIL ENGINEERING  
 Wentzville  
 1155 Wentzville Parkway Suite 103  
 Wentzville, MO 63385  
 Phone (314) 925-7444 Fax (314) 925-7457  
 Premier Civil Engineering  
 Missouri State Certificate of Authority #LC0951128

ENGINEER'S AUTHENTICATION  
 The responsibility for professional engineering liability on this project is hereby limited to the seal of closure authorized by the seal, signature, and date hereon attached. Responsibility is disclaimed for all other engineering plans involved in this project and specifically excludes revisions after this date unless reauthorized.

STEVE MARION P.E.  
 ENGINEER  
 F200007195

Developer / Owner Information  
 CEDARWOOD DEVELOPMENT, INC.  
 1765 MERRIMAN ROAD  
 AKRON, OH 44313  
 CONTACT: RON DIMARDO  
 OFFICE: (330)836-9971

P+Z No. 26-11  
 APPROVED 12.2.11  
 City No.

Sheet Number:  
 6

ALTA SURVEY