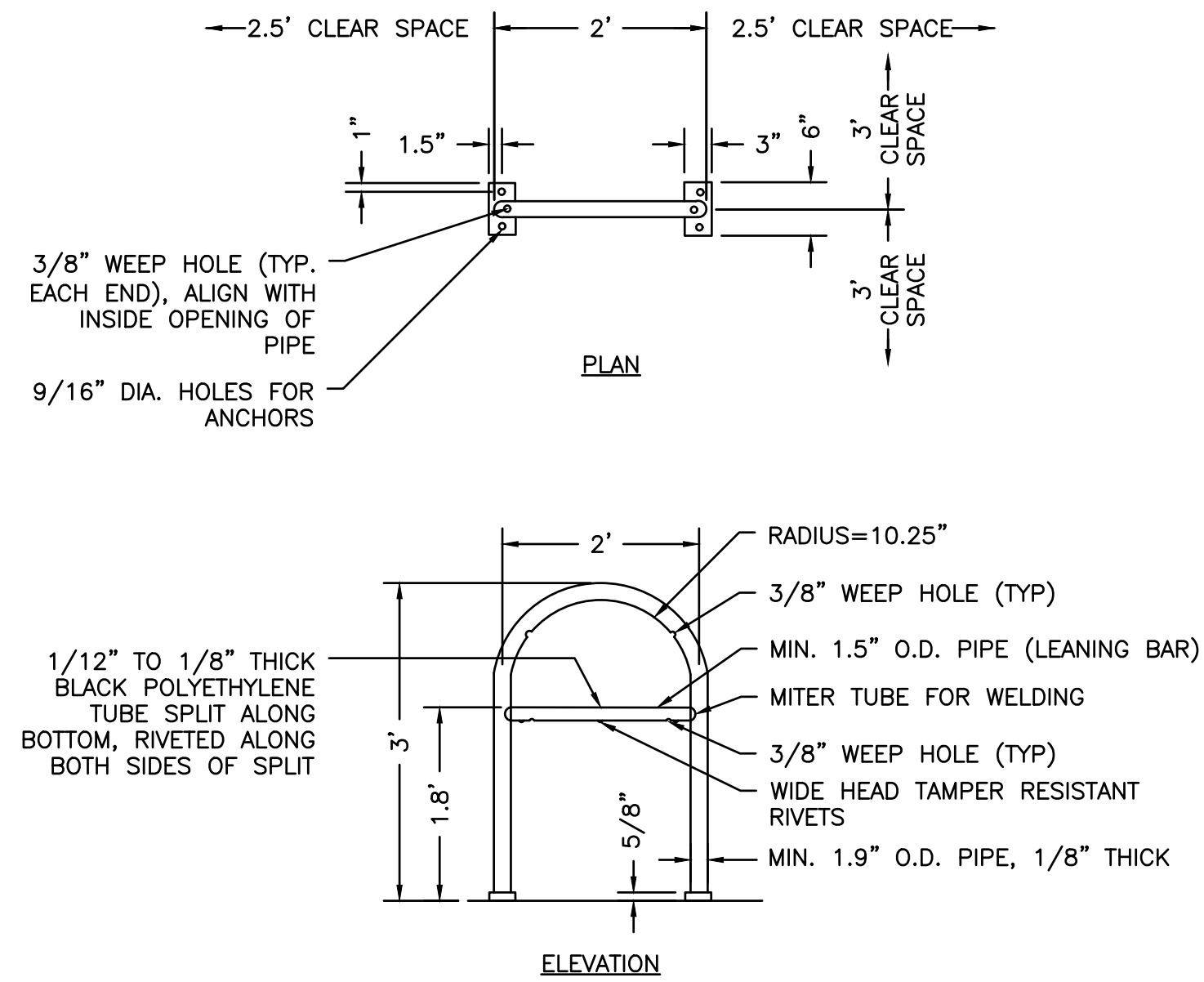
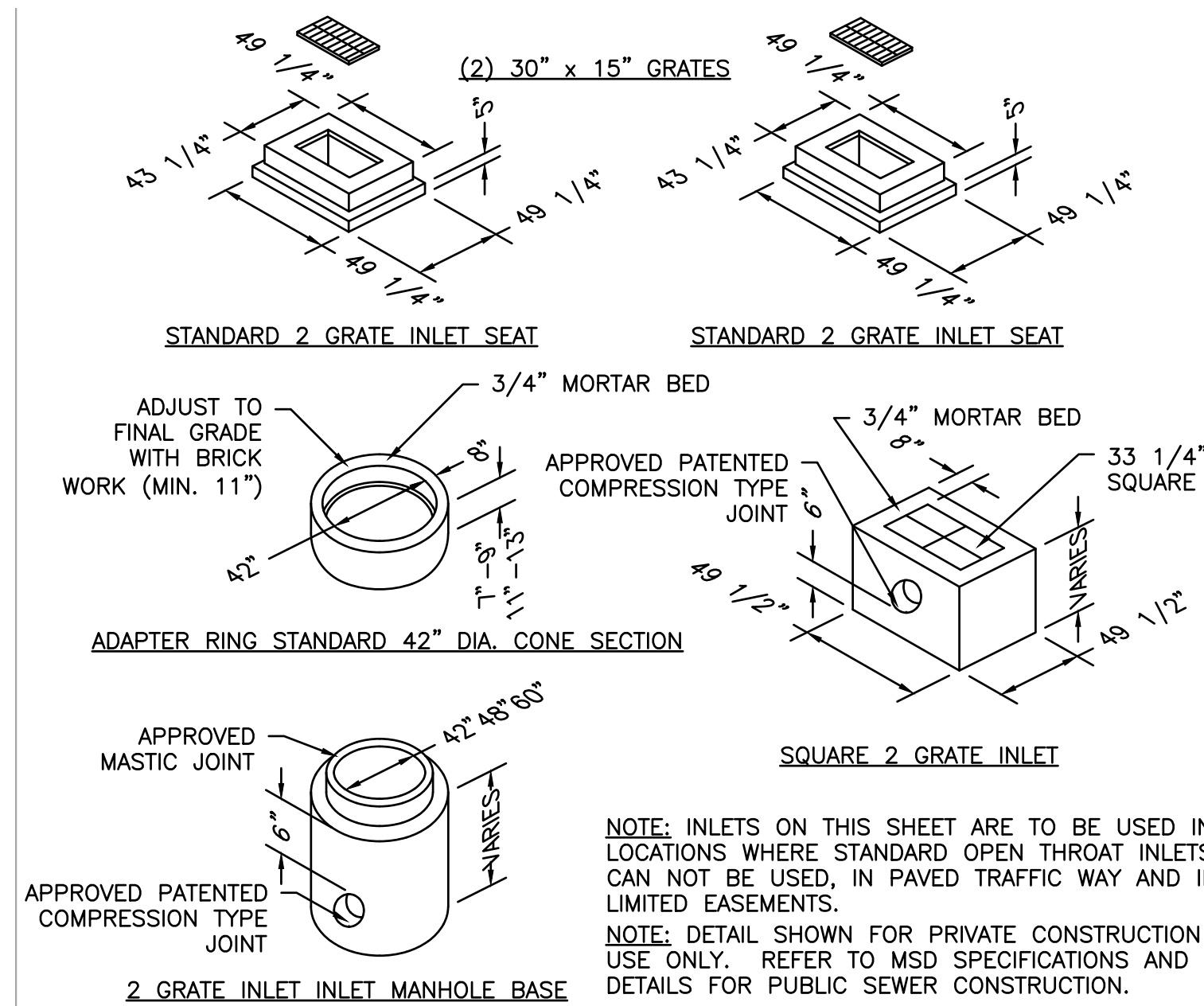


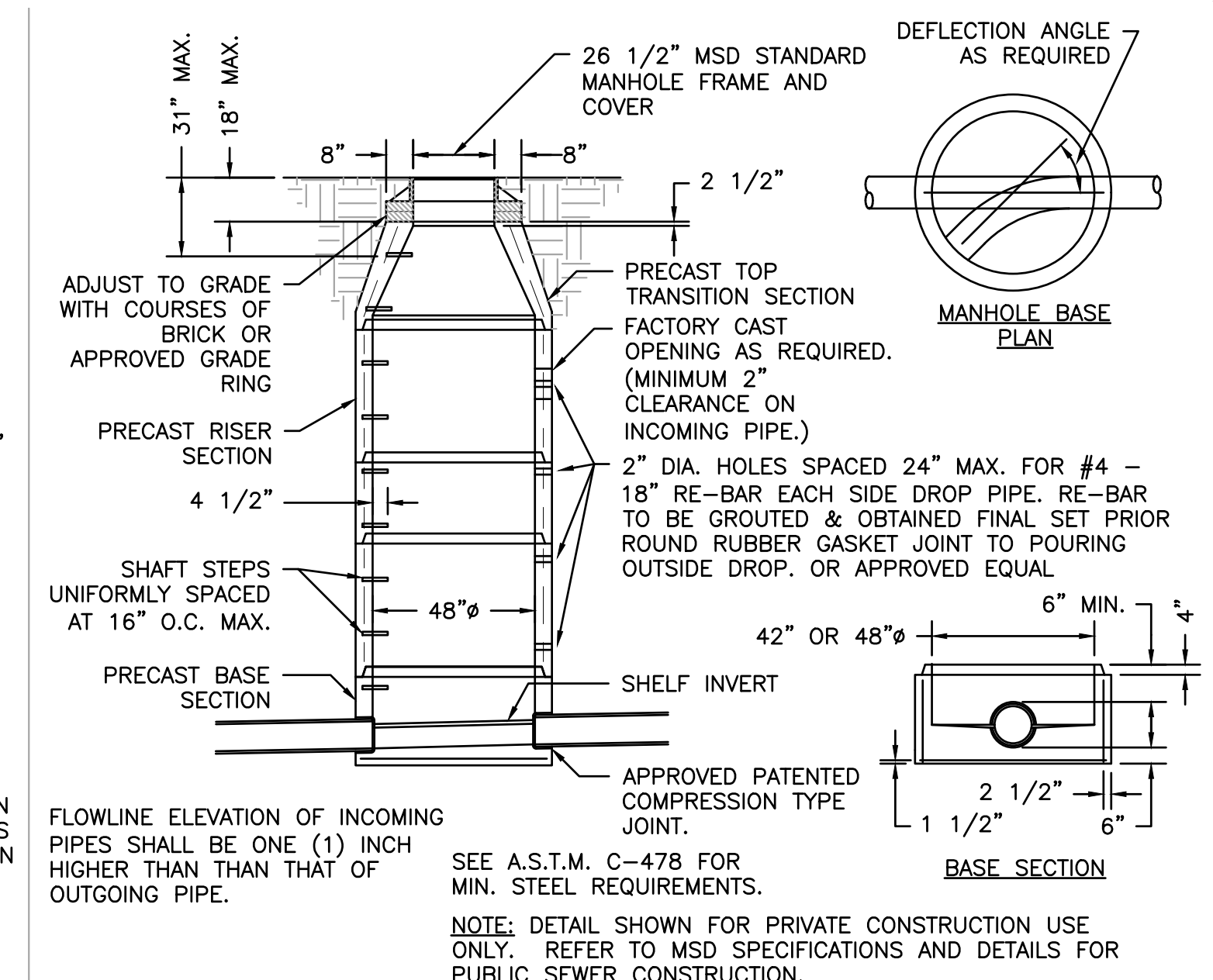
1 CROSS WALK DETAIL
SCALE: N.T.S. REF. DWG. C4.0



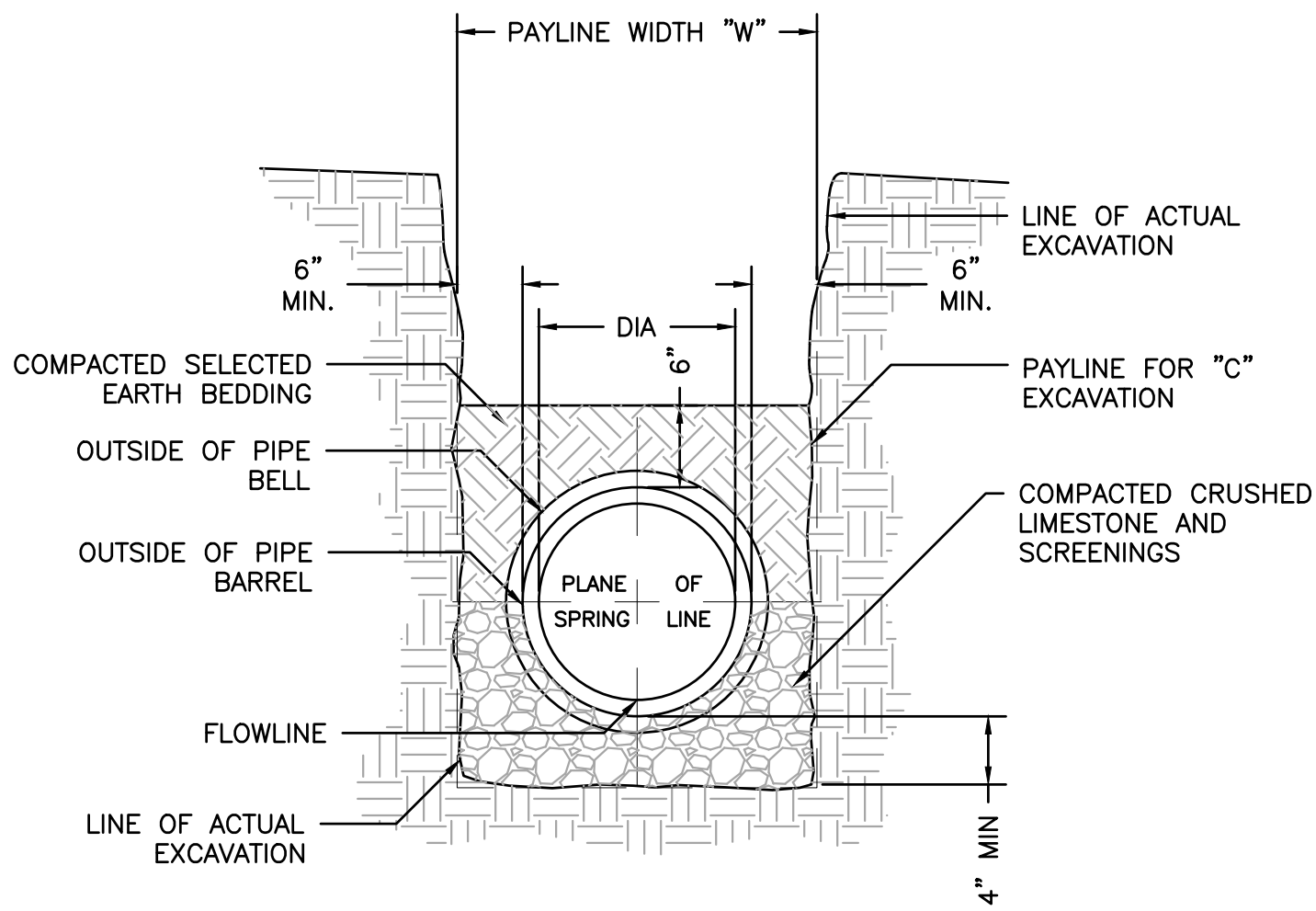
2 BIKE RACK DETAIL
SCALE: N.T.S. REF. DWG. C4.0



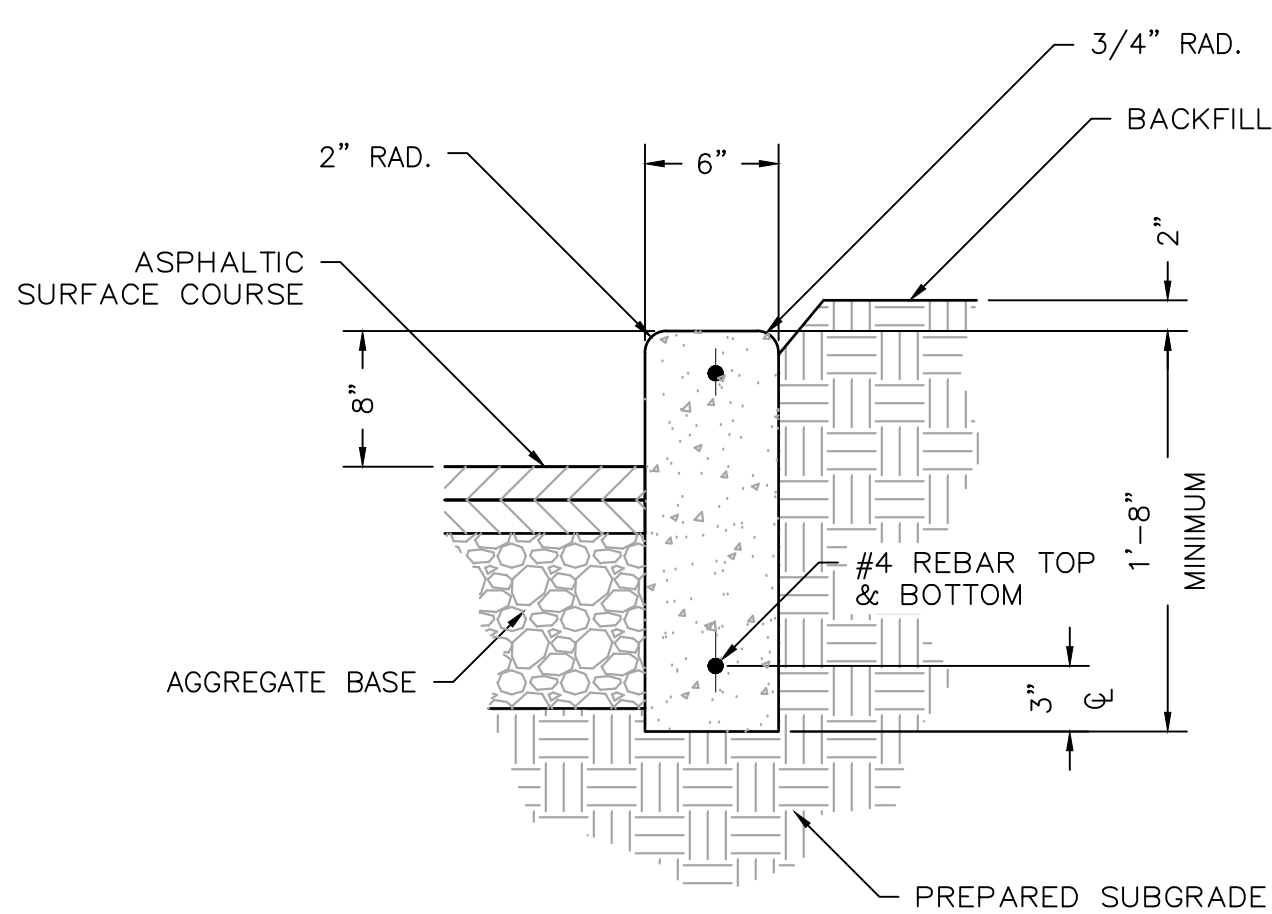
3 TWO GRATE INLET DETAIL
SCALE: N.T.S. REF. DWG. C6.0



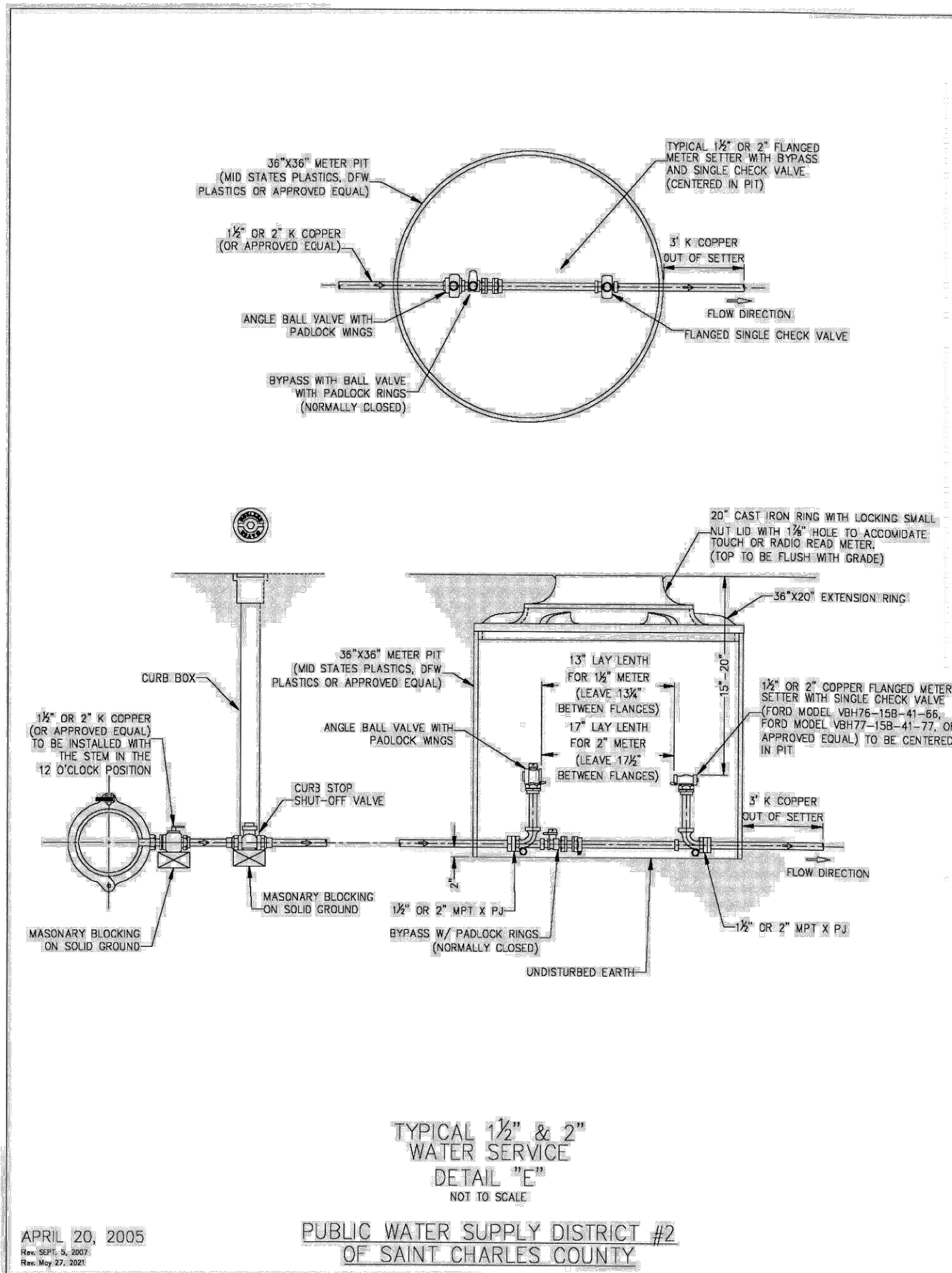
4 48" MANHOLE DETAIL
SCALE: N.T.S. REF. DWG. C6.0



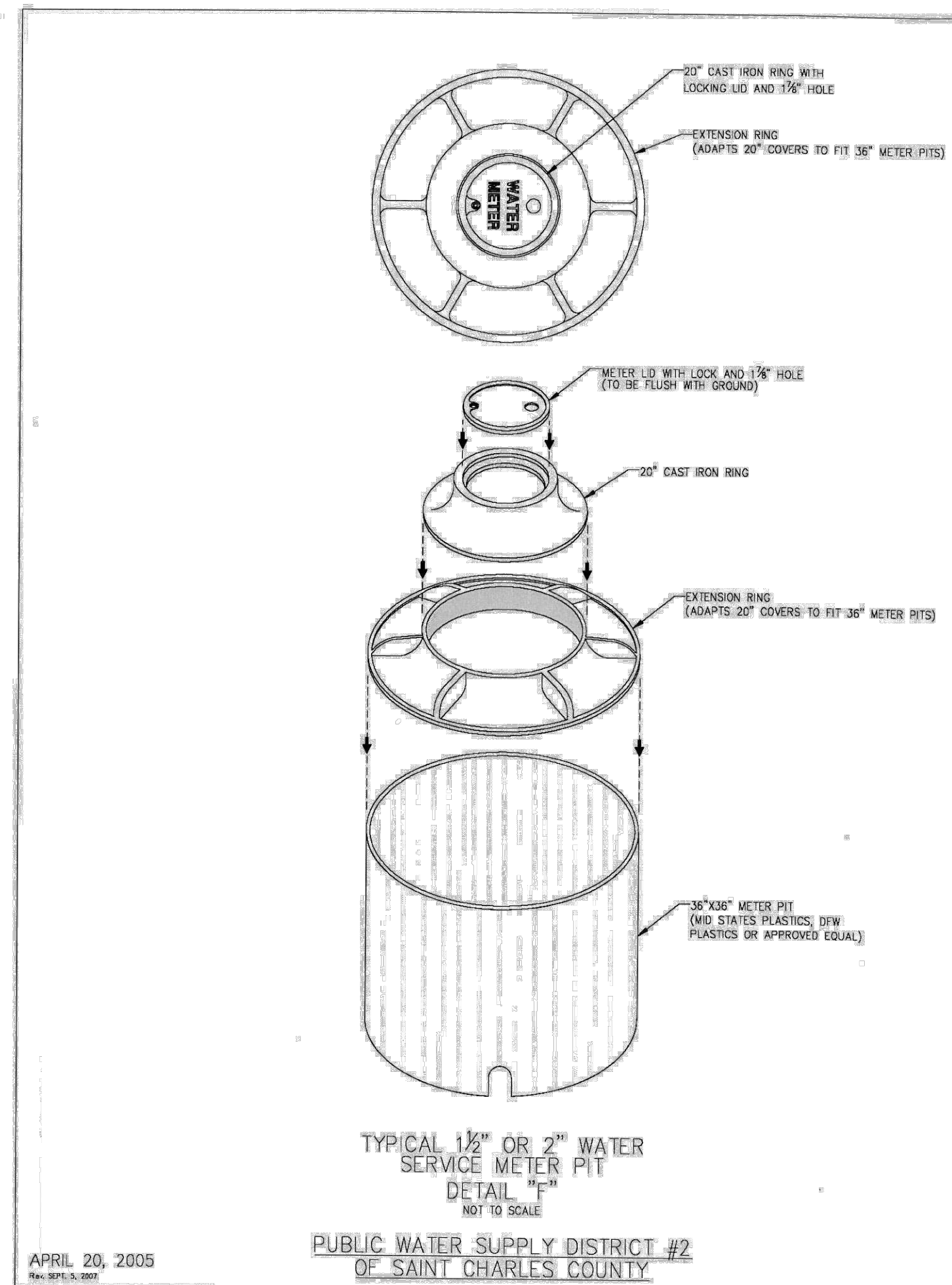
5 RCP PIPE BEDDING DETAIL
SCALE: N.T.S. REF. DWG. C6.0



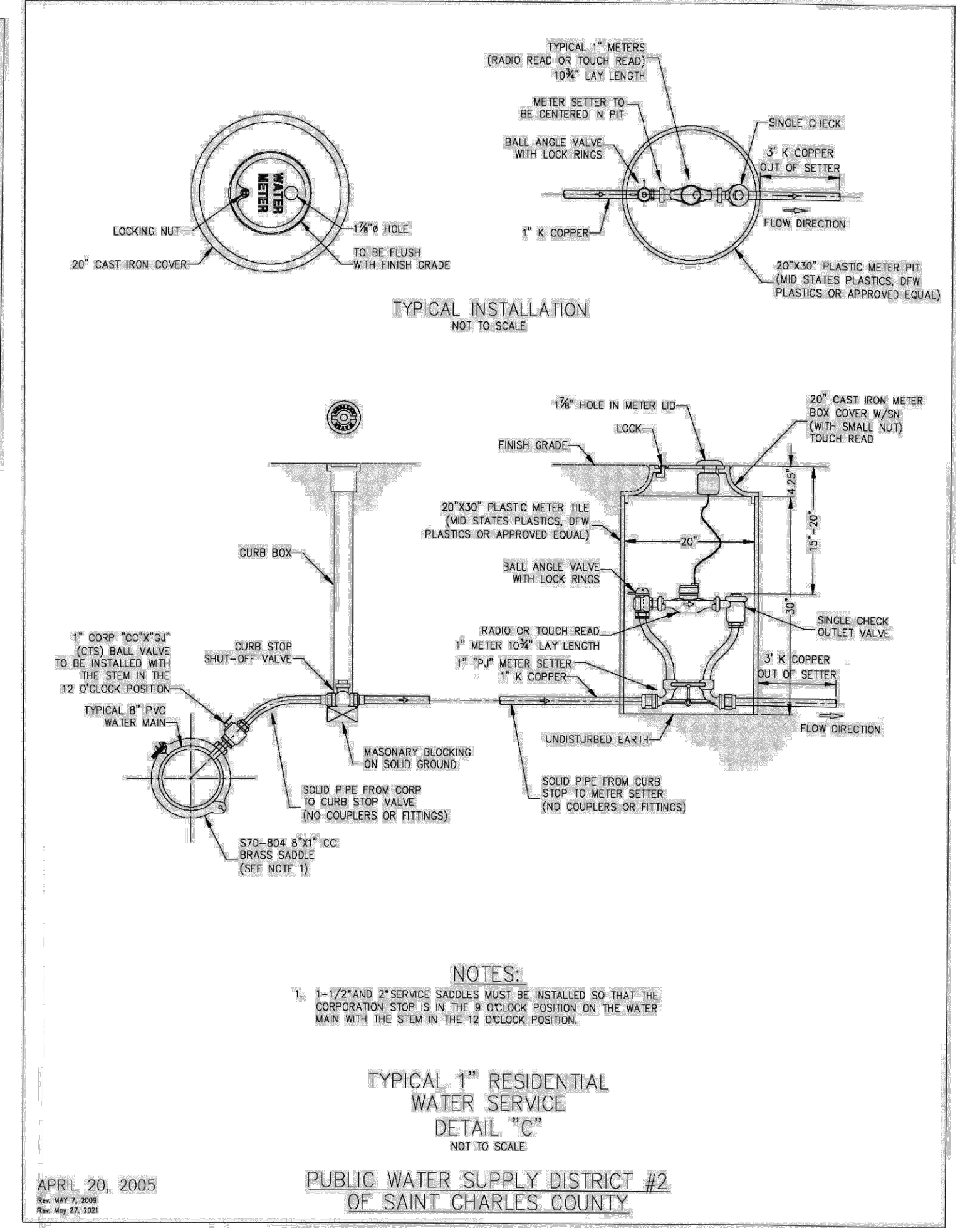
6 8" VERTICAL CONCRETE CURB DETAIL
SCALE: N.T.S. REF. DWG. C4.0



APRIL 20, 2005
Rev. 001, 4, 2007
Rev. 002, 07, 2007
PUBLIC WATER SUPPLY DISTRICT #2
OF SAINT CHARLES COUNTY



APRIL 20, 2005
Rev. 001, 4, 2007
Rev. 002, 07, 2007
PUBLIC WATER SUPPLY DISTRICT #2
OF SAINT CHARLES COUNTY



APRIL 20, 2005
Rev. 001, 4, 2007
Rev. 002, 07, 2007
PUBLIC WATER SUPPLY DISTRICT #2
OF SAINT CHARLES COUNTY

NO.	REVISION DESCRIPTION	DATE
1	ISSUED FOR PERMITS	09/16/2025
2	REVISION	
3	REVISION	
4	REVISION	
5	REVISION	
6	REVISION	
7	REVISION	
8	REVISION	
9	REVISION	
10	REVISION	

DESIGNER/OWNER:
CPTW, LLC
1707 CHESTERFIELD AIRPORT RD.
SUITE 210
CHESTERFIELD, MO 63005

THE PROFESSIONAL WHOSE SIGNATURE AND PERSONAL SEAL APPEAR HEREON HAS REVIEWED THIS SET OF DRAWINGS FOR CONFORMANCE WITH THE MISSOURI BOARD OF PROFESSIONAL ENGINEERS AND ARCHITECTS REQUIREMENTS FOR SEALING AND SIGNING. THE SEALING AND SIGNING OF THESE DRAWINGS IS A REQUIREMENT OF THE MISSOURI BOARD OF PROFESSIONAL ENGINEERS AND ARCHITECTS. THE SEALING AND SIGNING OF THESE DRAWINGS IS A REQUIREMENT OF THE MISSOURI BOARD OF PROFESSIONAL ENGINEERS AND ARCHITECTS. THE SEALING AND SIGNING OF THESE DRAWINGS IS A REQUIREMENT OF THE MISSOURI BOARD OF PROFESSIONAL ENGINEERS AND ARCHITECTS.

LINDSEY FAYE DICKEMPER
CIVIL ENGINEER
PE-2024026198
CORPORATE
ENGINEERING
CERTIFICATE #001165

CALEDONIA LOT 3A
231 RUSH WAY
OTFALLON, MO 63368

DETAIL SHEET

+ ST. CHARLES
3203 South Street
St. Charles, MO 63303
636.978.7508 tel
www.coledesign.com

COLE
CIVIL ENGINEERING / SURVEYING / PLANNING / LANDSCAPE ARCHITECTURE
Civil & Architectural, Inc. is a Member of the International Association of Professional Engineers and Architects (IAPPEA) and is a member of the International Association of Professional Engineers and Architects (IAPPEA).

DESIGN/CALC BY:
MRS

DRAWN BY:
MRS

CHECKED BY:
LFD

DRAWING SCALE:
AS SHOWN

DATE:
09/16/2025

Job Number
24-0089

Sheet Number
C8.1