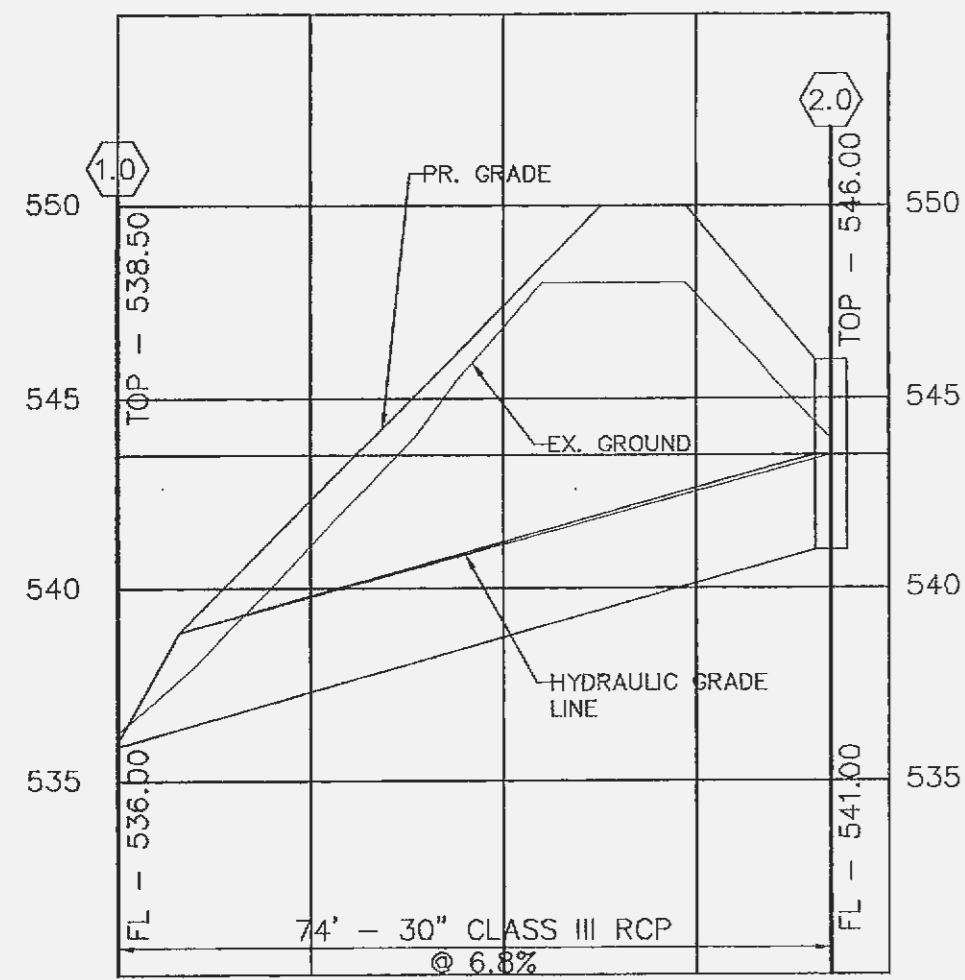
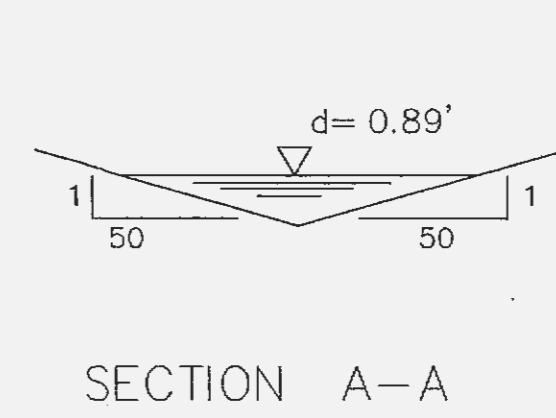
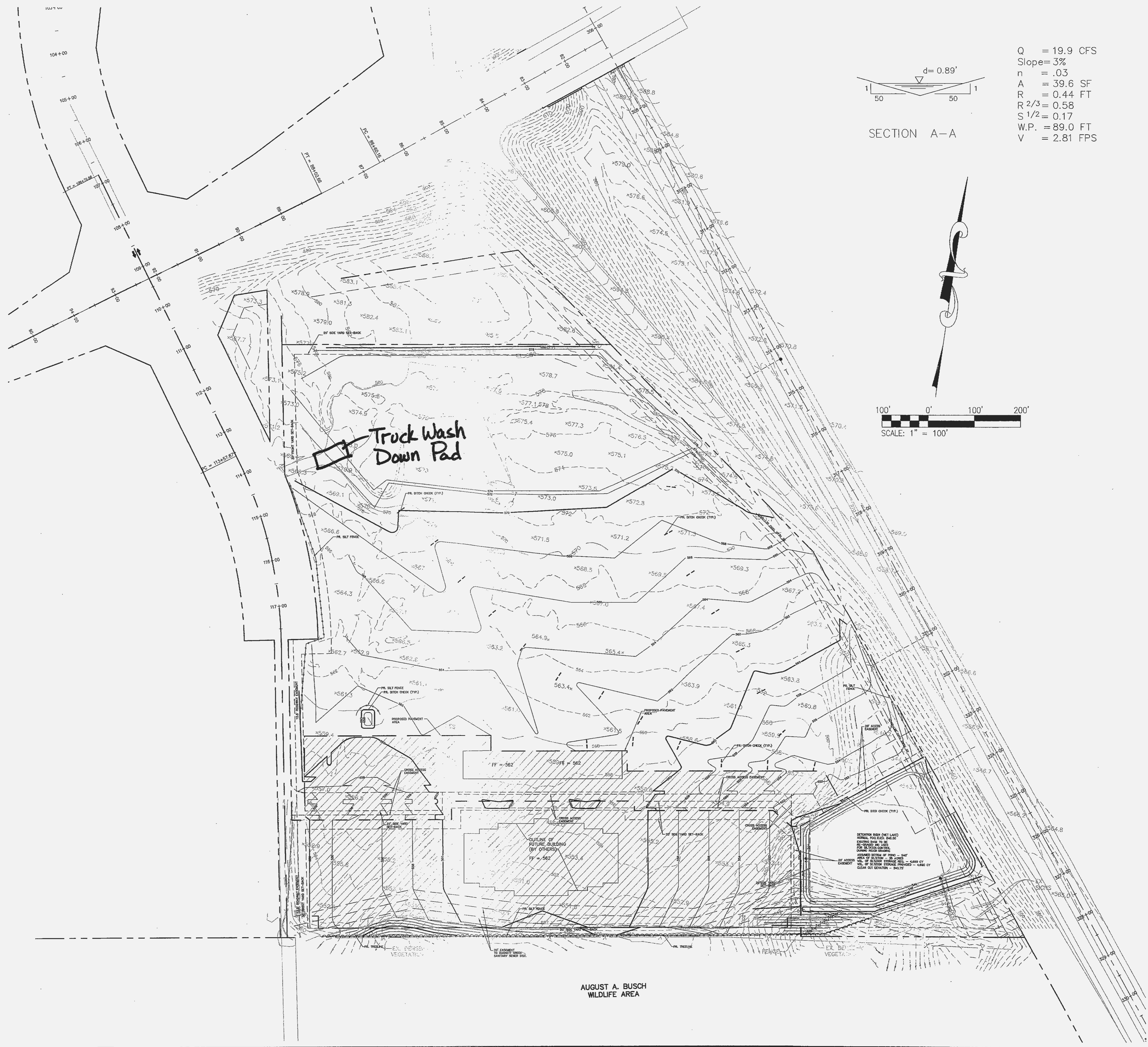


DATE: Nov 30, 2004 - 9:43am  
 DRAWING: \\005\jobs\2003\03-309\dwg\c\GRADING PLANS-phase1.dwg



STORM SEWER PROFILE  
 SCALE: HORIZONTAL 1"=20'  
 VERTICAL 1"=5'



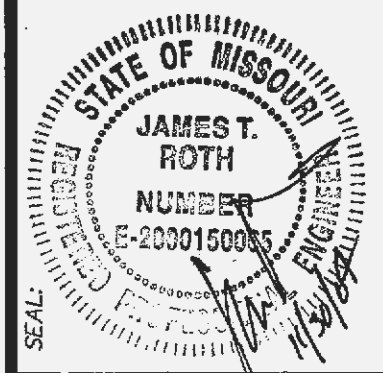
Q = 19.9 CFS  
 Slope = 3%  
 n = .03  
 A = 39.6 SF  
 R<sup>2/3</sup> = 0.58  
 S<sup>1/2</sup> = 0.17  
 W.P. = 89.0 FT  
 V = 2.81 FPS

AUGUST A. BUSCH  
 WILDLIFE AREA

REVISIONS	
DATE	DESCRIPTION
9/28/04	MEASURE DS-2
11/5/04	CITY COMMENTS
11/29/04	CITY COMMENTS

DEVELOPER/OWNER:  
**WINGHAVEN LAND INVESTORS, L.L.C.**  
**C/O MC EAGLE DEVELOPMENT COMPANY**  
**1001 BOARDWALK SPRINGS PLACE**  
**OFALLON, MO 63366**  
**(636) 661-9300**

THE PROFESSIONAL ENGINEER'S SIGNATURE AND PERSONAL SEAL APPEAR HEREON. ASSUMES RESPONSIBILITY ONLY FOR WHAT APPEARS ON THIS PLAN, AND DISCLAIMS ALL OTHER RESPONSIBILITIES. ESTIMATES, REPORTS, OR OTHER DOCUMENTS OR INSTRUMENTS NOT SEALED BY THE UNDERSIGNED PROFESSIONAL ENGINEER SHALL BE CONSIDERED VOID. THIS PLAN IS PART OF THE PROJECT, TO WHICH THIS PROFESSIONAL ENGINEER'S SEAL AND SIGNATURE ARE APPLIED.



**CALEDONIA**  
 HIGHWAY 40/61 AND WINGHAVEN  
 OFALLON, MO 63366

**GRADING PLAN/STORM PROFILE**

**Cole & Associates Inc.**  
 Planning • Civil Engineering • Land Surveying

10777 Sunset Office Drive, Suite 10  
 St. Louis, MO 63127 (314) 984-9887 FAX: 984-0687  
 Email: info@colestl.com

DESIGNED BY: PMH  
 DRAWN BY: PMH  
 CHECKED BY: KER/JTR  
 DATE: 11/17/04

Job Number  
**03-309**

Sheet Number  
**G3.0**