

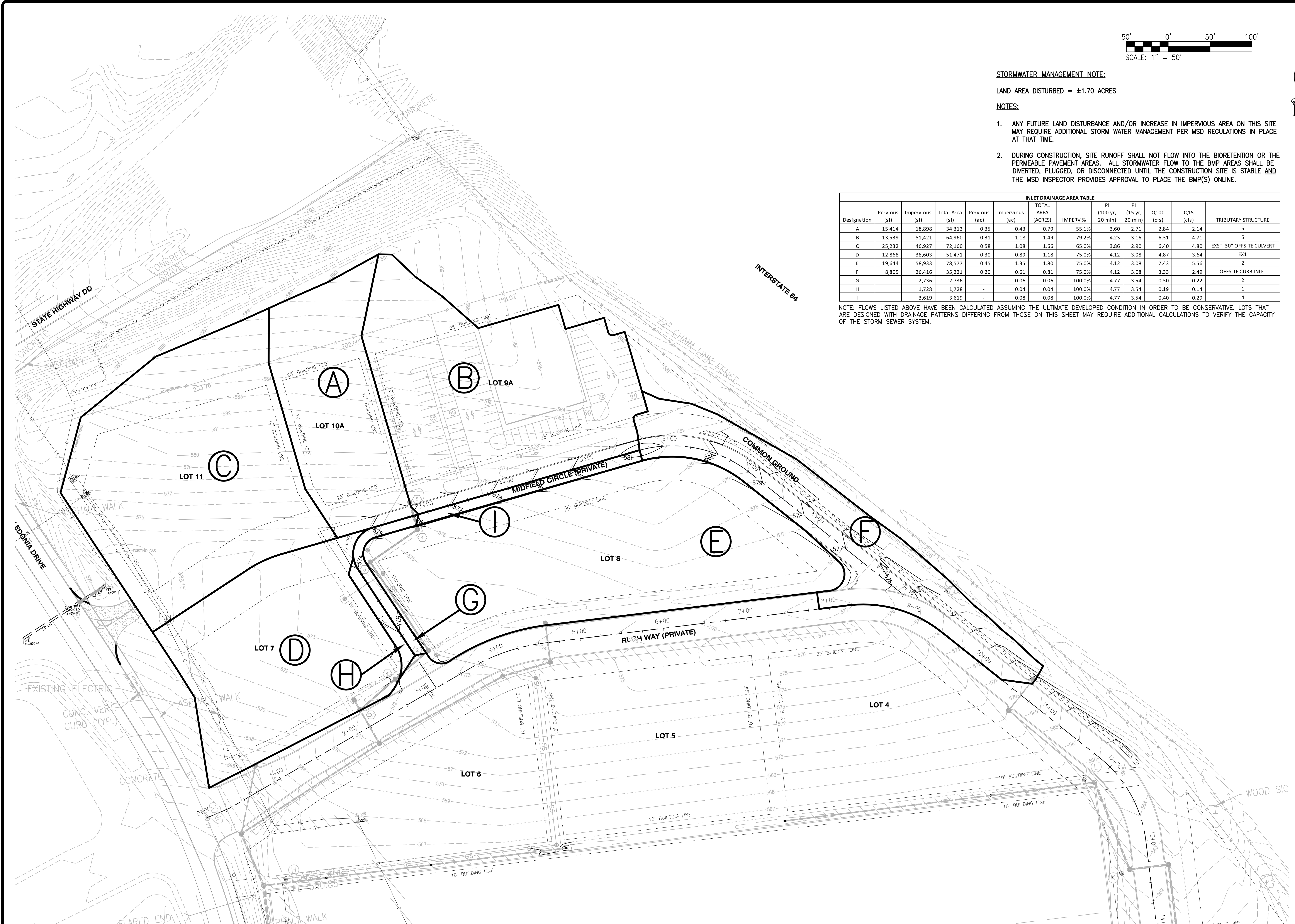
STORMWATER MANAGEMENT NOTE:
 LAND AREA DISTURBED = ±1.70 ACRES

NOTES:

1. ANY FUTURE LAND DISTURBANCE AND/OR INCREASE IN IMPERVIOUS AREA ON THIS SITE MAY REQUIRE ADDITIONAL STORM WATER MANAGEMENT PER MSD REGULATIONS IN PLACE AT THAT TIME.
2. DURING CONSTRUCTION, SITE RUNOFF SHALL NOT FLOW INTO THE BIORETENTION OR THE PERMEABLE PAVEMENT AREAS. ALL STORMWATER FLOW TO THE BMP AREAS SHALL BE DIVERTED, PLUGGED, OR DISCONNECTED UNTIL THE CONSTRUCTION SITE IS STABLE AND THE MSD INSPECTOR PROVIDES APPROVAL TO PLACE THE BMP(S) ONLINE.

INLET DRAINAGE AREA TABLE												
Designation	Pervious (sf)	Impervious (sf)	Total Area (sf)	Pervious (ac)	Impervious (ac)	TOTAL AREA (ACRES)	IMPERV %	PI (100 yr, 20 min)	PI (15 yr, 20 min)	Q100 (cfs)	Q15 (cfs)	TRIBUTARY STRUCTURE
A	15,414	18,898	34,312	0.35	0.43	0.79	55.1%	3.60	2.71	2.84	2.14	5
B	13,539	51,421	64,960	0.31	1.18	1.49	79.2%	4.23	3.16	6.31	4.71	5
C	25,232	46,927	72,160	0.58	1.08	1.66	65.0%	3.86	2.90	6.40	4.80	EXST. 30" OFFSITE CULVERT
D	12,868	38,603	51,471	0.30	0.89	1.18	75.0%	4.12	3.08	4.87	3.64	EX1
E	19,644	58,933	78,577	0.45	1.35	1.80	75.0%	4.12	3.08	7.43	5.56	2
F	8,805	26,416	35,221	0.20	0.61	0.81	75.0%	4.12	3.08	3.33	2.49	OFFSITE CURB INLET
G	-	2,736	2,736	-	0.06	0.06	100.0%	4.77	3.54	0.30	0.22	2
H	-	1,728	1,728	-	0.04	0.04	100.0%	4.77	3.54	0.19	0.14	1
I	-	3,619	3,619	-	0.08	0.08	100.0%	4.77	3.54	0.40	0.29	4

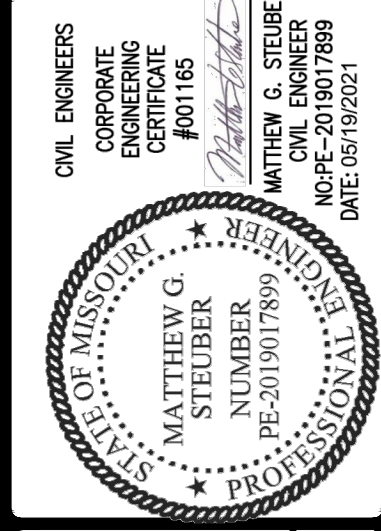
NOTE: FLOWS LISTED ABOVE HAVE BEEN CALCULATED ASSUMING THE ULTIMATE DEVELOPED CONDITION IN ORDER TO BE CONSERVATIVE. LOTS THAT ARE DESIGNED WITH DRAINAGE PATTERNS DIFFERING FROM THOSE ON THIS SHEET MAY REQUIRE ADDITIONAL CALCULATIONS TO VERIFY THE CAPACITY OF THE STORM SEWER SYSTEM.



THIS SHEET IS FOR DRAINAGE CALCULATION PURPOSES ONLY AND NOT TO BE USED AS CONSTRUCTION PLANS

USER: Matt Steuber TAB: C11.0 Drainage Area Map
 DATE: May 19, 2021 - 12:08:30 PM
 DRAWING: S:\085\Jobs\2021\21-0017\CAD\Drawings\Plan\Drawings\21-0017.dwg

DEVELOPER/OWNER:
40DD SPORTS, LLC
1 ASPEN CIRCLE DRIVE
INNSBROOK, MO 6390



CALEDONIA CENTER PHASE 2
 O'FALLON, MO
DRAINAGE AREA MAP

+ ST. CHARLES
 1520 S. Fifth Street
 Suite 307
 St. Charles, MO 63033
 636.770.2500 fax
 636.770.2500 cell
COLE
 CIVIL ENGINEERING / SURVEYING / PLANNING / LANDSCAPE ARCHITECTURE
COLE & ASSOCIATES, INC. is a Missouri Corporation. S.B. Cole designs, creates, and illustrates all these services registered in the State of Missouri.

DESIGN/CALC BY: MGS
 DRAWN BY: MGS
 CHECKED BY: EWM
 DRAWING SCALE: AS SHOWN
 DATE: 05/19/2021

Job Number
21-0017
 Sheet Number
C11.0