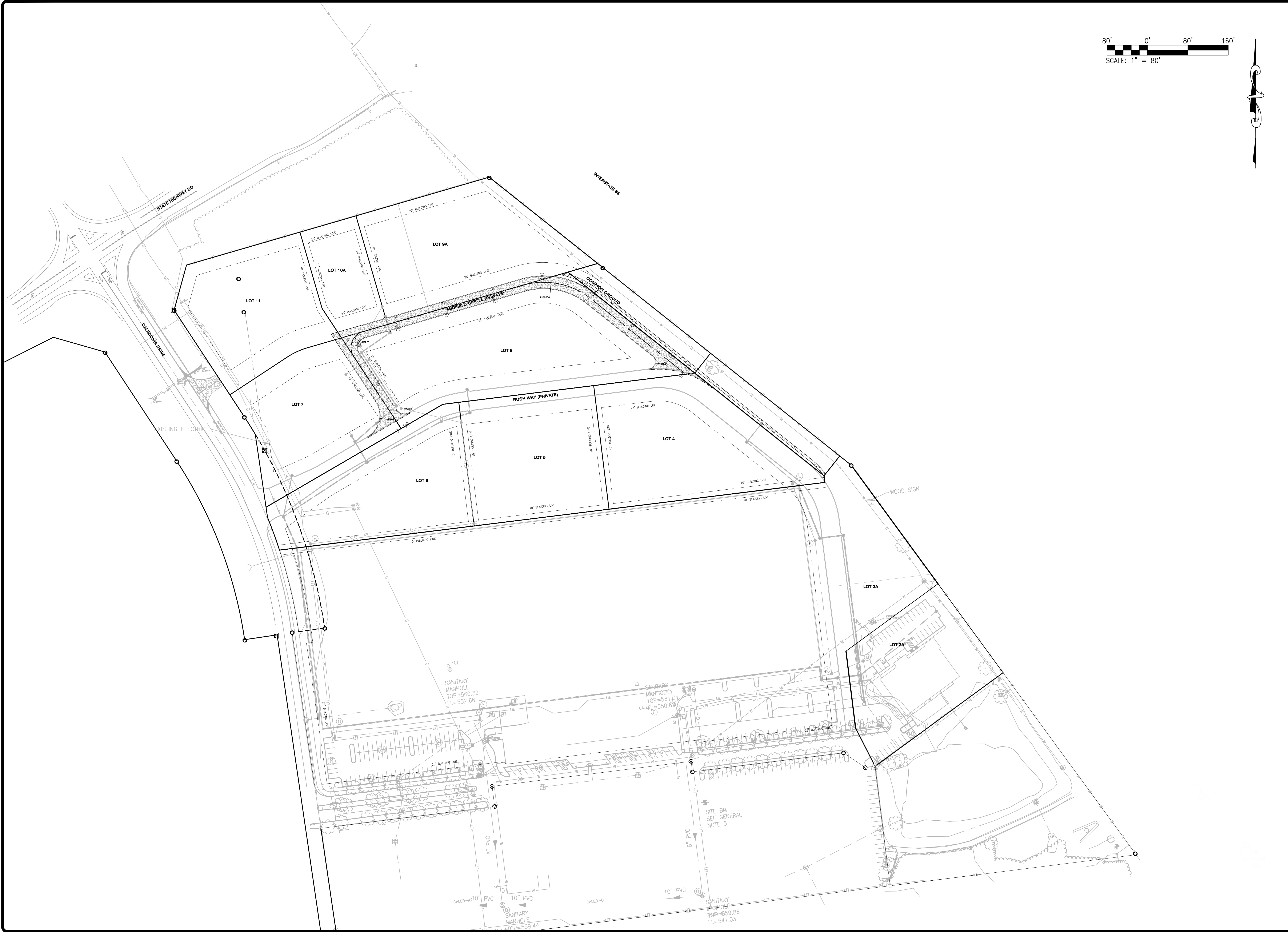


USER: Matt Stueber TAB: C3.0 OVERALL SITE PLAN
 DATE: May 19, 2021 12:04:55 PM
 DRAWING: S:\JOBS\Jobs\2021\21-0017\CALED\CALED-C.dwg



80' 0' 80' 160'
 SCALE: 1" = 80'

NO	REVISION DESCRIPTION	DATE

DEVELOPER/OWNER:
40DD SPORTS, LLC
 1 ASPEN CIRCLE DRIVE
 INNSBROOK, MO 63390

THE PROFESSIONAL, WHOSE SIGNATURE AND PERSONAL SEAL APPEAR HEREON, HAS EXAMINED THE INFORMATION AND RECORDS FOR THIS PROJECT AND HAS FOUND THEM TO BE ACCURATE AND COMPLETE. THIS PROFESSIONAL'S SERVICES ARE LIMITED TO THE SPECIFICATIONS, ESTIMATES, REPORTS, OR OTHER DOCUMENTS OF INSTRUMENTS NOTED HEREON. THIS PROFESSIONAL DOES NOT WARRANT THAT THE INFORMATION IS COMPLETE OR ACCURATE FOR ANY PURPOSES OTHER THAN THOSE SPECIFICALLY NOTED HEREON. THIS PROFESSIONAL'S LIABILITY IS LIMITED TO THE PROFESSIONAL FEES RECEIVED FOR THIS PROJECT.

CIVIL ENGINEERS
 CORPORATE
 ENGINEERING
 OFFICE
 401165

REGISTERED PROFESSIONAL ENGINEER
 STATE OF MISSOURI
 NUMBER
 PE-201907899
 DATE 05/19/2021

MATTHEW G. STUEBER

CALEDONIA CENTER PHASE 2
 O'FALLON, MO

OVERALL SITE PLAN

+ ST. CHARLES
 1520 S. Fifth Street
 Suite 307
 St. Charles, MO 63303
 636.770.2300
 636.770.2300 fax

COLE
 CIVIL ENGINEERING / SURVEYING / PLANNING / LANDSCAPE ARCHITECTURE

DESIGN/CALC BY: MGS
 DRAWN BY: MGS
 CHECKED BY: EWM
 DRAWING SCALE: AS SHOWN
 DATE: 05/19/2021

Job Number
21-0017
 Sheet Number
C3.0