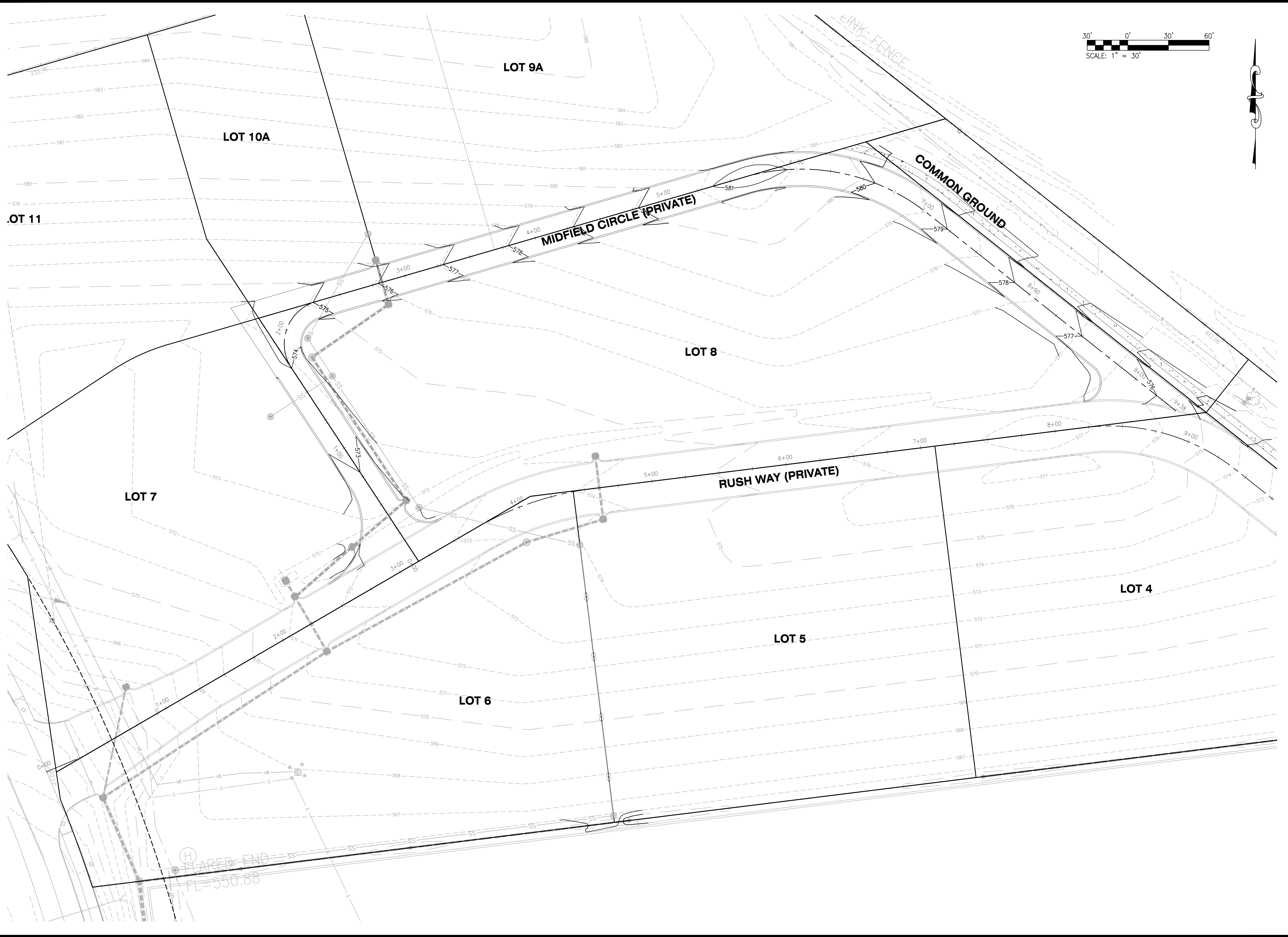


USER: Matt Stueber TAB: C4.0 GRADING PLAN
 DATE: May 19, 2021 12:05:18 PM
 DRAWING: S:\JOBS\Job#2021\21-0017\CADD\C-Pan\PlotSheets\0_PLAN_GRADE_21-0017.dwg



NO.	REVISION DESCRIPTION	DATE

DEVELOPER/OWNER:
40DD SPORTS, LLC
 1 ASPEN CIRCLE DRIVE
 INNSBROOK, MO 6390

THE PROFESSIONAL WHOSE SIGNATURE AND PERSONAL SEAL APPEAR HEREON HAS EXAMINED THIS DRAWING FOR CONFORMANCE WITH THE PROFESSIONAL SEAL ACT AND HAS DETERMINED THAT IT CONFORMS TO THE REQUIREMENTS OF THE ACT. THIS PROFESSIONAL IS NOT PROVIDING ANY SERVICES OR OTHER DOCUMENTS OF INSTRUMENTS NOT SPECIFICALLY LISTED ON THIS DRAWING. THE PROFESSIONAL IS NOT PROVIDING ANY SERVICES OR OTHER DOCUMENTS OF INSTRUMENTS NOT SPECIFICALLY LISTED ON THIS DRAWING.

CIVIL ENGINEERS
 CORPORATE
 ENGINEERING
 OFFICE
 #001165

REGISTERED PROFESSIONAL ENGINEER
 STATE OF MISSOURI
 NUMBER
 PE-201907899
 EXPIRES
 12/31/2024
 NOPE-201907899
 DATE 05/19/2021

CALEDONIA CENTER PHASE 2
 O'FALLON, MO

GRADING PLAN

+ ST. CHARLES
 1520 S. Fifth Street
 Suite 307
 St. Charles, MO 63303
 636.770.7300
 636.770.7300 fax

cole
 CIVIL ENGINEERING / SURVEYING / PLANNING / LANDSCAPE ARCHITECTURE
 Cole & Associates, Inc. is a Missouri Corporation. A.S. Cole designs, creates, and illustrates the visual features of the "look" of a project.

DESIGN/CALC BY	MGS
DRAWN BY	MGS
CHECKED BY	EWM
DRAWING SCALE	AS SHOWN
DATE	05/19/2021
Job Number	21-0017
Sheet Number	C4.0