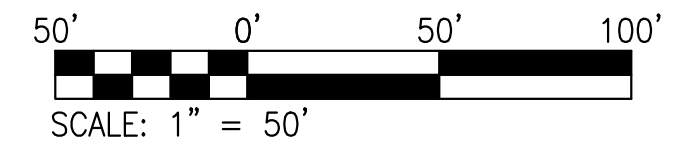
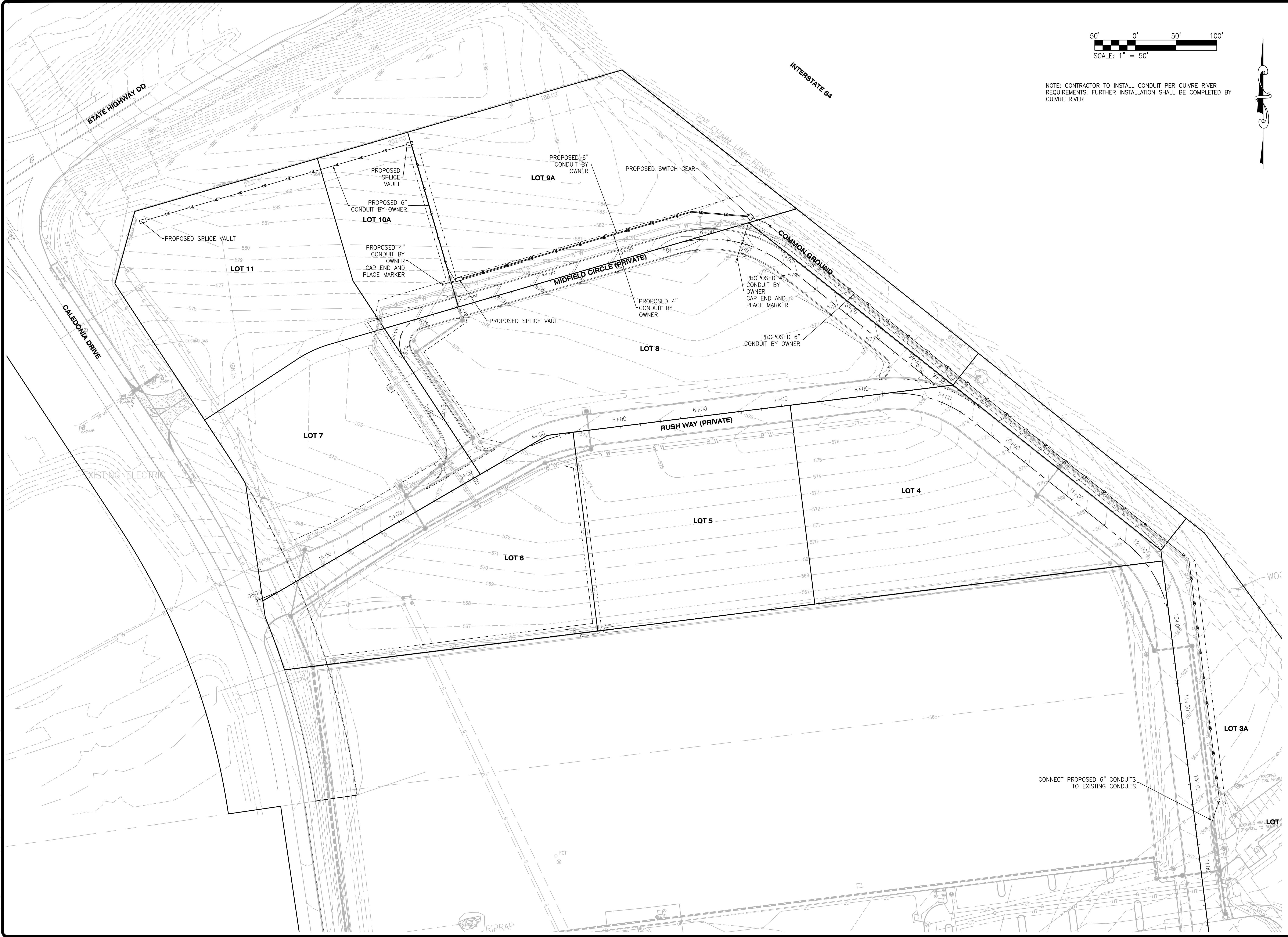


USER: Matt Steuber TAB: C5.1 ELECTRICAL PLAN  
 DATE: May 19, 2021 12:05:46 PM  
 DRAWING: S:\JOBS\Job2021\21-0017\CAD\Drawings\Plan\Utility\_21-0017.dwg



NOTE: CONTRACTOR TO INSTALL CONDUIT PER CUIVRE RIVER REQUIREMENTS. FURTHER INSTALLATION SHALL BE COMPLETED BY CUIVRE RIVER

NO	REVISION DESCRIPTION	DATE

DEVELOPER/OWNER:  
**40DD SPORTS, LLC**  
 1 ASPEN CIRCLE DRIVE  
 INNSBROOK, MO 63390

THE PROFESSIONAL WHOSE SIGNATURE AND PERSONAL SEAL APPEAR HEREON IS A LICENSED PROFESSIONAL ENGINEER IN THE STATE OF MISSOURI AND IS NOT BEING USED FOR ANY OTHER PROJECTS. THIS DRAWING IS THE PROPERTY OF THE PROFESSIONAL ENGINEER AND SHALL NOT BE REPRODUCED OR COPIED IN ANY MANNER WITHOUT HIS WRITTEN CONSENT. THE PROFESSIONAL ENGINEER'S LIABILITY IS LIMITED TO THE SERVICES PROVIDED BY HIMSELF OR HIS FIRM. THE PROFESSIONAL ENGINEER'S LIABILITY IS NOT TO BE USED FOR ANY OTHER PROJECTS.

CIVIL ENGINEERS  
 CORPORATE  
 ENGINEERING  
 OFFICE  
 401165

REGISTERED PROFESSIONAL ENGINEER  
 NUMBER  
 PE-201907899  
 EXPIRES  
 05/19/2021

DATE: 05/19/2021

CALEDONIA CENTER PHASE 2  
 O'FALLON, MO

**ELECTRICAL PLAN**

**+ ST. CHARLES**  
 1520 S. Fifth Street  
 Suite 307  
 St. Charles, MO 63303  
 636.770.2500  
 636.770.2500 fax

**COLE**

CIVIL ENGINEERING / SURVEYING / PLANNING / LANDSCAPE ARCHITECTURE  
COLE & ASSOCIATES, INC. IS A LICENSED PROFESSIONAL ENGINEERING FIRM IN THE STATE OF MISSOURI.

DESIGN/CALC BY	MGS
DRAWN BY	MGS
CHECKED BY	EWM
DRAWING SCALE	AS SHOWN
DATE	05/19/2021
Job Number	21-0017
Sheet Number	C5.1