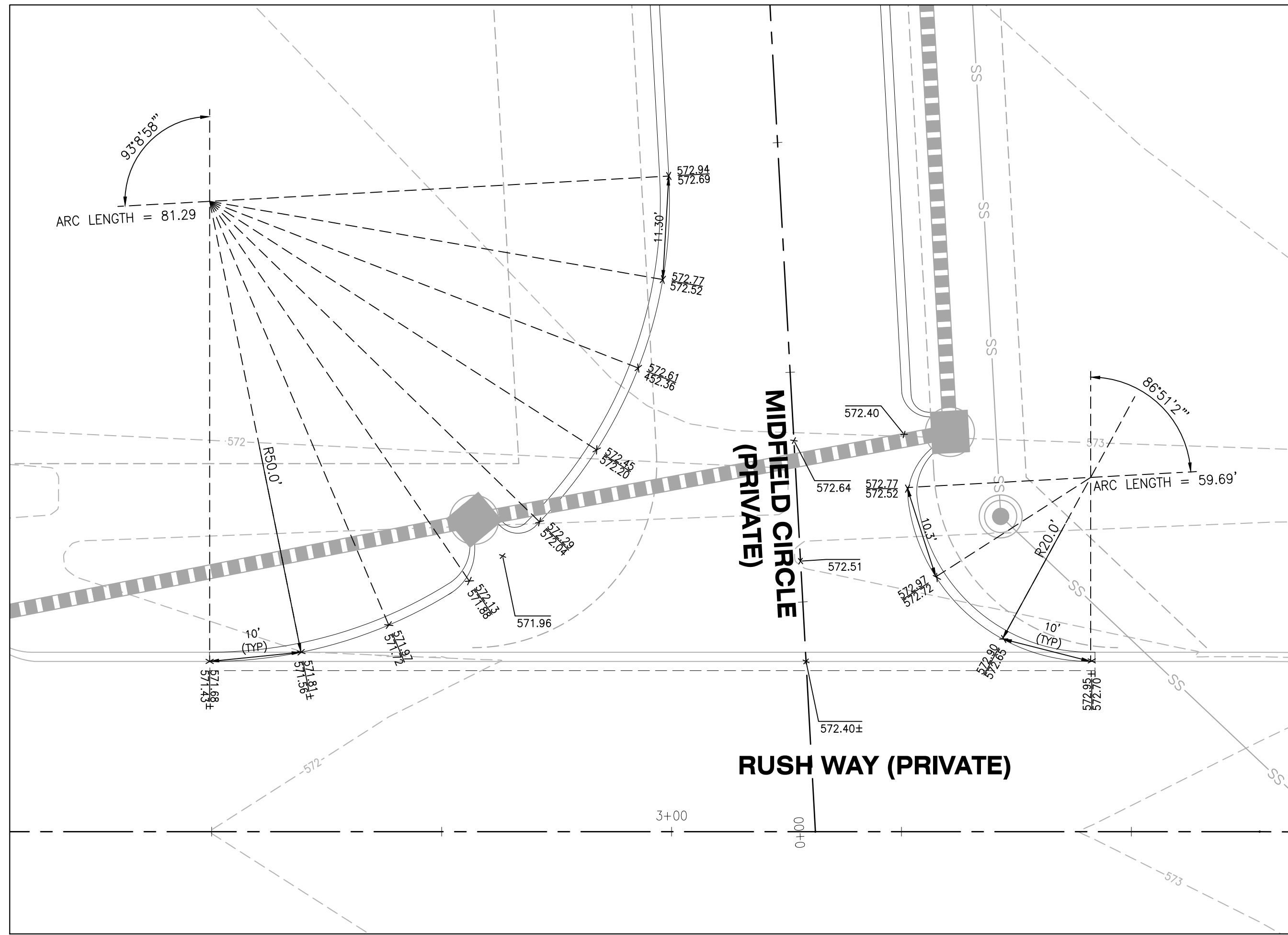
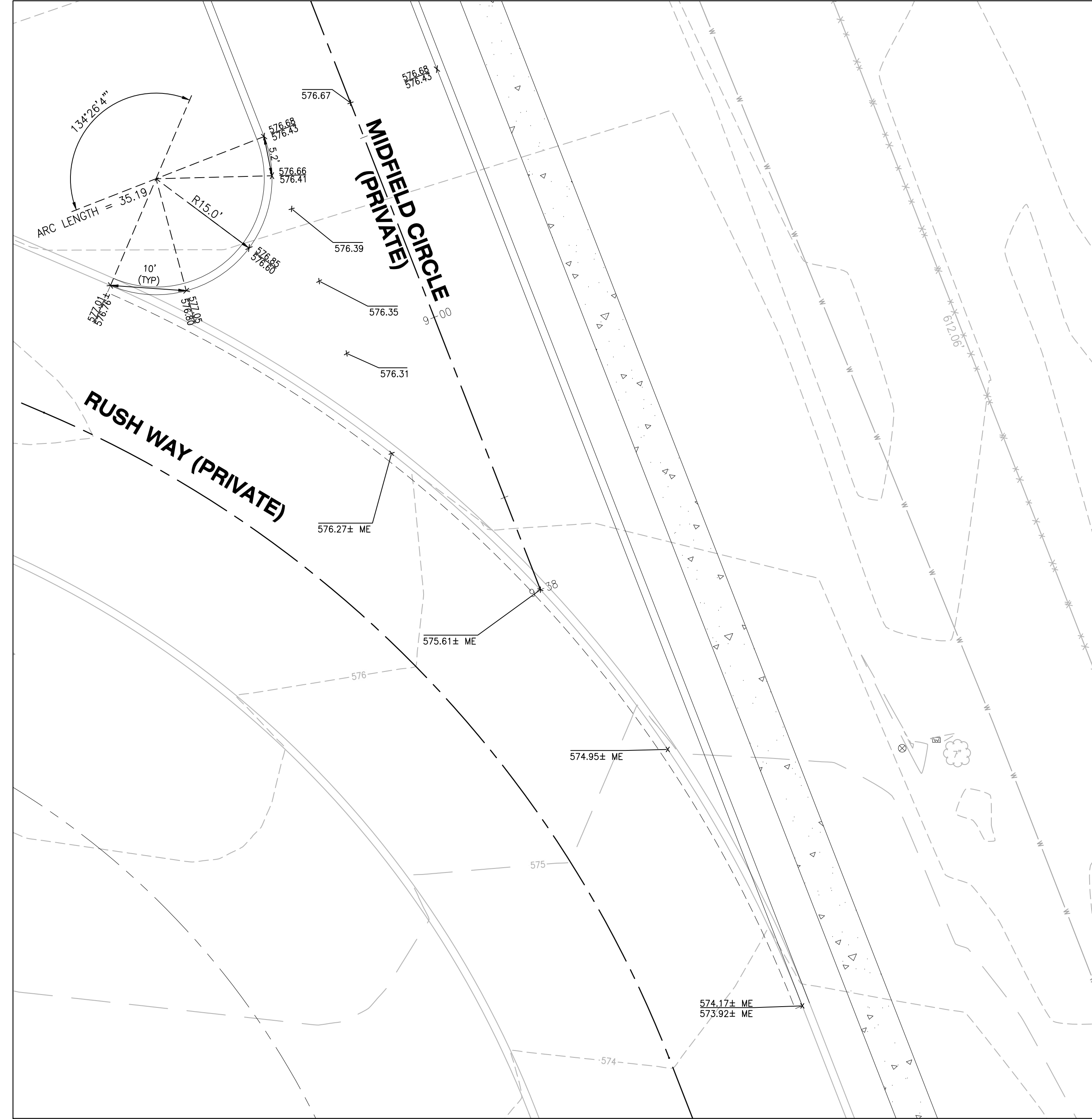


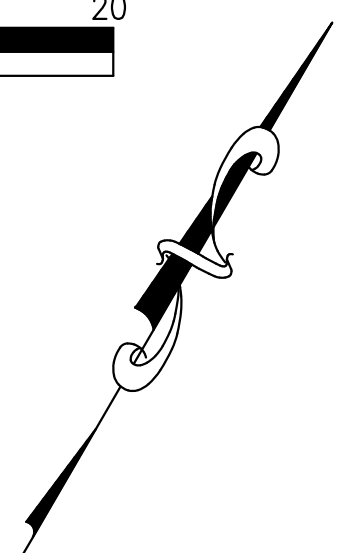
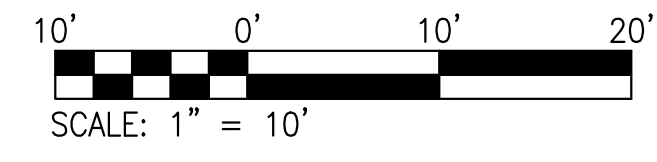
1 MIDFIELD CIRCLE CURB OPENING
SCALE: 1" = 10' REF. DWG. C3.1



2 RUSH WAY & MIDFIELD CIRCLE (WEST)
SCALE: 1" = 10' REF. DWG. C3.1



3 RUSH WAY & MIDFIELD CIRCLE (EAST)
SCALE: 1" = 10' REF. DWG. C3.1



USER: Matt Stueber TAB: C6.1 STREET WARPINGS
 DATE: May 19, 2021 12:06:24 PM
 DRAWING: S:\JOBS\Job2021\21-0017\CADED\Plan\PolSheet\0_Plan_SRADE_21-0017.dwg

NO	REVISION DESCRIPTION	DATE

DEVELOPER/OWNER:
40DD SPORTS, LLC
1 ASPEN CIRCLE DRIVE
INNSBROOK, MO 6390

THE PROFESSIONAL, WHOSE SIGNATURE AND PERSONAL SEAL APPEAR HEREON, HAS REVIEWED THIS DRAWING FOR ACCURACY AND COMPLIANCE WITH ALL APPLICABLE CODES AND REGULATIONS. THIS DRAWING IS THE PROPERTY OF THE PROFESSIONAL AND IS NOT TO BE REPRODUCED OR TRANSMITTED IN ANY FORM OR BY ANY MEANS, ELECTRONIC OR MECHANICAL, INCLUDING PHOTOCOPYING, RECORDING, OR BY ANY INFORMATION STORAGE AND RETRIEVAL SYSTEM, WITHOUT THE WRITTEN PERMISSION OF THE PROFESSIONAL. THE PROFESSIONAL'S LIABILITY IS LIMITED TO THE PROFESSIONAL'S NEGLIGENCE IN THE PERFORMANCE OF HIS OR HER PROFESSIONAL SERVICES. THE PROFESSIONAL'S LIABILITY IS LIMITED TO THE PROFESSIONAL'S NEGLIGENCE IN THE PERFORMANCE OF HIS OR HER PROFESSIONAL SERVICES. THE PROFESSIONAL'S LIABILITY IS LIMITED TO THE PROFESSIONAL'S NEGLIGENCE IN THE PERFORMANCE OF HIS OR HER PROFESSIONAL SERVICES.

CIVIL ENGINEERS
 CORPORATE
 ENGINEERING
 OFFICE
 401165

MATTHEW G. STEUBER
 LICENSE NUMBER
 PE-201901789
 PROFESSIONAL ENGINEER

CALEDONIA CENTER PHASE 2
O'FALLON, MO

STREET WARPINGS

ST. CHARLES
 1520 S. Fifth Street
 Suite 307
 St. Charles, MO 63303
 636.770.7300
 636.770.7300

COLE
 CIVIL ENGINEERING / SURVEYING / PLANNING / LANDSCAPE ARCHITECTURE

DESIGN/CALC BY	MGS
DRAWN BY	MGS
CHECKED BY	EWM
DRAWING SCALE	AS SHOWN
DATE	05/19/2021

Job Number
21-0017

Sheet Number
C6.1