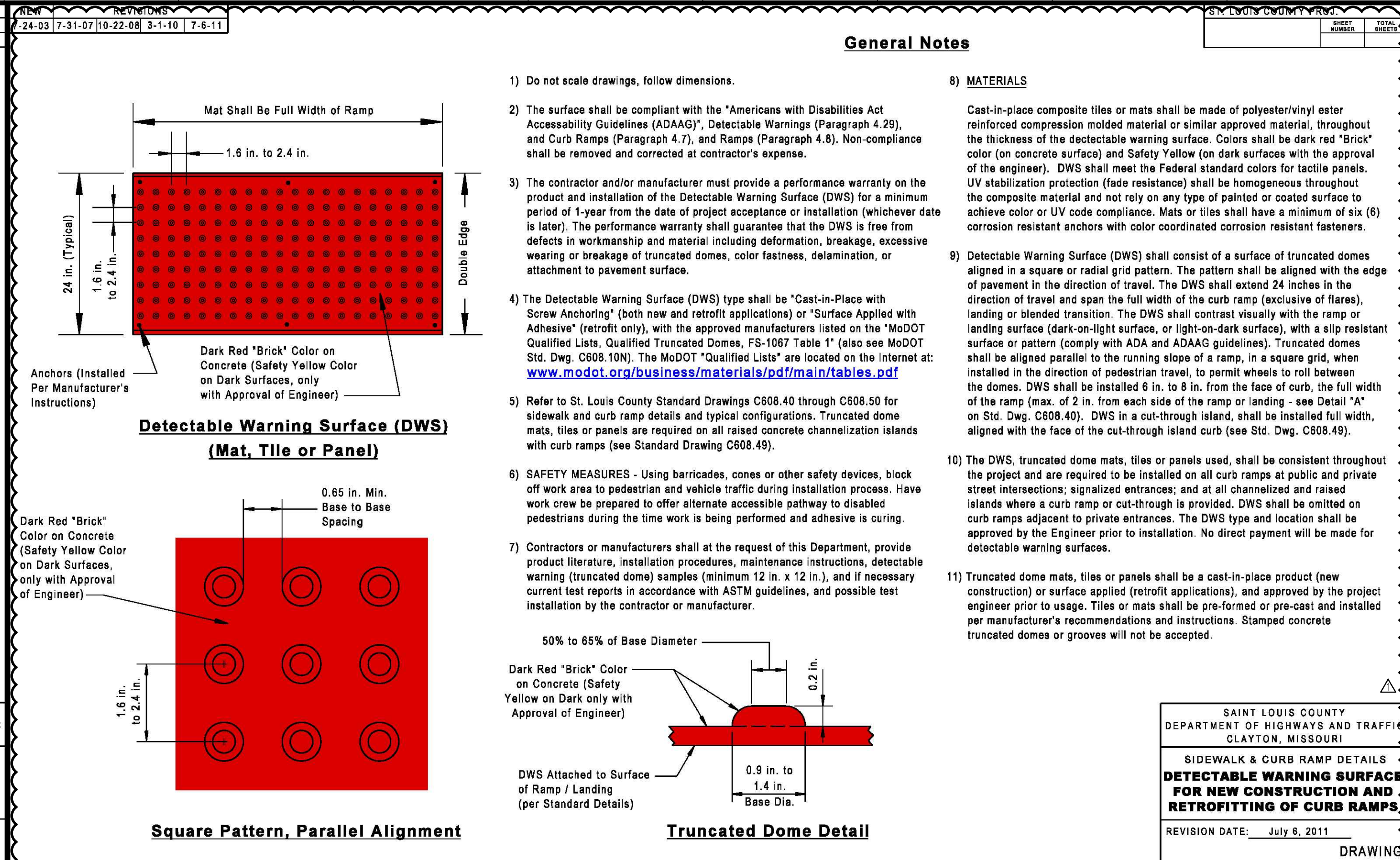


Ramp Configuration 3 (Tree Lawn at Back of Curb)
Ramp Configuration 4 (Sidewalk at Back of Curb)
Ramp Configuration 5 (Sidewalk at Back of Curb)

General Notes

- 1) Do not scale drawing, follow dimensions.
- 2) See Standard Drawing C608.40, "Concrete Sidewalk and Curb Ramp Details (Types 1 & 2)" for the remainder of the "General Notes" for this drawing as well as ramp construction details.
- 3) For Ramp Configurations 4 & 5, see "Curb Ramp Length Tables" on Standard Drawing C608.41.

SAINT LOUIS COUNTY DEPARTMENT OF HIGHWAYS AND TRAFFIC CLAYTON, MISSOURI	
SIDEWALK & CURB RAMP DETAILS SINGLE CURB RAMP (CONFIGURATIONS 3, 4 & 5)	
REVISION DATE: March 1, 2010	DRAWING C608.44



Detectable Warning Surface (DWS)
Mat, Tile or Panel
Square Pattern, Parallel Alignment
Truncated Dome Detail

General Notes

- 1) Do not scale drawings, follow dimensions.
- 2) The surface shall be compliant with the "Americans with Disabilities Act Accessibility Guidelines (ADAAG)", Detectable Warnings (Paragraph 4.29), and Curb Ramps (Paragraph 4.7), and Ramps (Paragraph 4.8). Non-compliance shall be removed and corrected at contractor's expense.
- 3) The contractor and/or manufacturer must provide a performance warranty on the product and installation of the Detectable Warning Surface (DWS) for a minimum period of 1-year from the date of project acceptance or installation (whichever date is later). The performance warranty shall guarantee that the DWS is free from defects in workmanship and material including deformation, breakage, excessive wear or breakage of truncated domes, color fastness, delamination, or attachment to pavement surface.
- 4) The Detectable Warning Surface (DWS) type shall be "Cast-in-Place with Screw Anchoring" (both new and retrofit applications) or "Surface Applied with Adhesive" (retrofit only), with the approved manufacturers listed on the "MoDOT Qualified Lists, Qualified Truncated Domes, FS-1067 Table 1" (also see MoDOT Std. Dwg. C608.10N). The MoDOT "Qualified Lists" are located on the internet at: www.modot.org/business/materials/pdf/main/tables.pdf
- 5) Refer to St. Louis County Standard Drawings C608.40 through C608.50 for sidewalk and curb ramp details and typical configurations. Truncated dome mats, tiles or panels are required on all raised concrete channelization islands with curb ramps (see Standard Drawing C608.49).
- 6) SAFETY MEASURES - Using barricades, cones or other safety devices, block off work area to pedestrian and vehicle traffic during installation process. Have work crew be prepared to offer alternate accessible pathway to disabled pedestrians during the time work is being performed and adhesive is curing.
- 7) Contractors or manufacturers shall at the request of this Department, provide product literature, installation procedures, maintenance instructions, detectable warning (truncated dome) samples (minimum 12 in. x 12 in.), and if necessary current test reports in accordance with ASTM guidelines, and possible test installation by the contractor or manufacturer.
- 8) **MATERIALS**
Cast-in-place composite tiles or mats shall be made of polyester/vinyl ester reinforced compression molded material or similar approved material, throughout the thickness of the detectable warning surface. Colors shall be dark red "Brick" color (on concrete surface) and Safety Yellow (on dark surfaces with the approval of the engineer). DWS shall meet the Federal standard colors for tactile panels. UV stabilization protection (fade resistance) shall be homogeneous throughout the composite material and not rely on any type of painted or coated surface to achieve color or UV code compliance. Mats or tiles shall have a minimum of six (6) corrosion resistant anchors with color coordinated corrosion resistant fasteners.
- 9) Detectable Warning Surface (DWS) shall consist of a surface of truncated domes aligned in a square or radial grid pattern. The pattern shall be aligned with the edge of pavement in the direction of travel. The DWS shall extend 24 inches in the direction of travel and span the full width of the curb ramp (exclusive of flares), landing or blended transition. The DWS shall contrast visually with the ramp or landing surface (dark-on-light surface, or light-on-dark surface), with a slip resistant surface or pattern (comply with ADA and ADAAG guidelines). Truncated domes shall be aligned parallel to the running slope of a ramp, in a square grid, when installed in the direction of pedestrian travel, to permit wheels to roll between the domes. DWS shall be installed 6 in. to 8 in. from the face of curb, the full width of the ramp (max. of 2 in. from each side of the ramp or landing - see Detail "A" on Std. Dwg. C608.40). DWS in a cut-through island, shall be installed full width, aligned with the face of the cut-through island curb (see Std. Dwg. C608.49).
- 10) The DWS, truncated dome mats, tiles or panels used, shall be consistent throughout the project and are required to be installed on all curb ramps at public and private street intersections; signalized entrances; and at all channelized and raised islands where a curb ramp or cut-through is provided. DWS shall be omitted on curb ramps adjacent to private entrances. The DWS type and location shall be approved by the Engineer prior to installation. No direct payment will be made for detectable warning surfaces.
- 11) Truncated dome mats, tiles or panels shall be a cast-in-place product (new construction) or surface applied (retrofit applications), and approved by the project engineer prior to usage. Tiles or mats shall be pre-formed or pre-cast and installed per manufacturer's recommendations and instructions. Stamped concrete truncated domes or grooves will not be accepted.

SAINT LOUIS COUNTY DEPARTMENT OF HIGHWAYS AND TRAFFIC CLAYTON, MISSOURI	
SIDEWALK & CURB RAMP DETAILS DETECTABLE WARNING SURFACE FOR NEW CONSTRUCTION AND RETROFITTING OF CURB RAMPS	
REVISION DATE: July 6, 2011	DRAWING C608.50

636-594-0540 (tel.)
636-594-0512 (fax)
mailto:ochran@ochran.com
6304 E. Independence Dr.
Union, Missouri 63084

COCHRAN
Civil Engineering
Land Surveying
Architecture
Site Development
General Consulting
Master Planning

Missouri State Certificate of Authority Numbers:
Survey: 000380
Engineering: 010655
Architecture: 2002014240

Three working days prior to the start of any excavation, call 1-800-UGC-RTS for utility location information.

All OSHA rules & regulations for construction required by these plans shall be strictly followed (i.e. trenching, blasting, etc.)

STATE OF MISSOURI
TIMOTHY SCHOWE
Professional Engineer
NUMBER PE-201800268
3-4-21

THE STREETS OF CALEDONIA
POOL CLUBHOUSE
 O'FALLON, MISSOURI

DETAIL SHEET

DATE: 08-18-21	BY: JMM	APPROVED: ERR
DATE: AUG. 04, 2021	BY: JMM	APPROVED: ERR
SCALE: 1" = 20'		
PROJ. NO: 17-6821		
DWG. NO: C7.02		

DWG NAME: F:\17-6821 - 260 Acre Tract along Hwy 40, O'Fallon, MO\AutoCAD Drawings\6821 - Plan Sheets\Construction Drawings\Pool & Clubhouse Plans\07-Detail Sheet - Pool Clubhouse.dwg LAYOUT TAB: C7.02 PLOTTED ON: Aug 19, 2021 - 1:19pm PLOTTED BY: jmayor