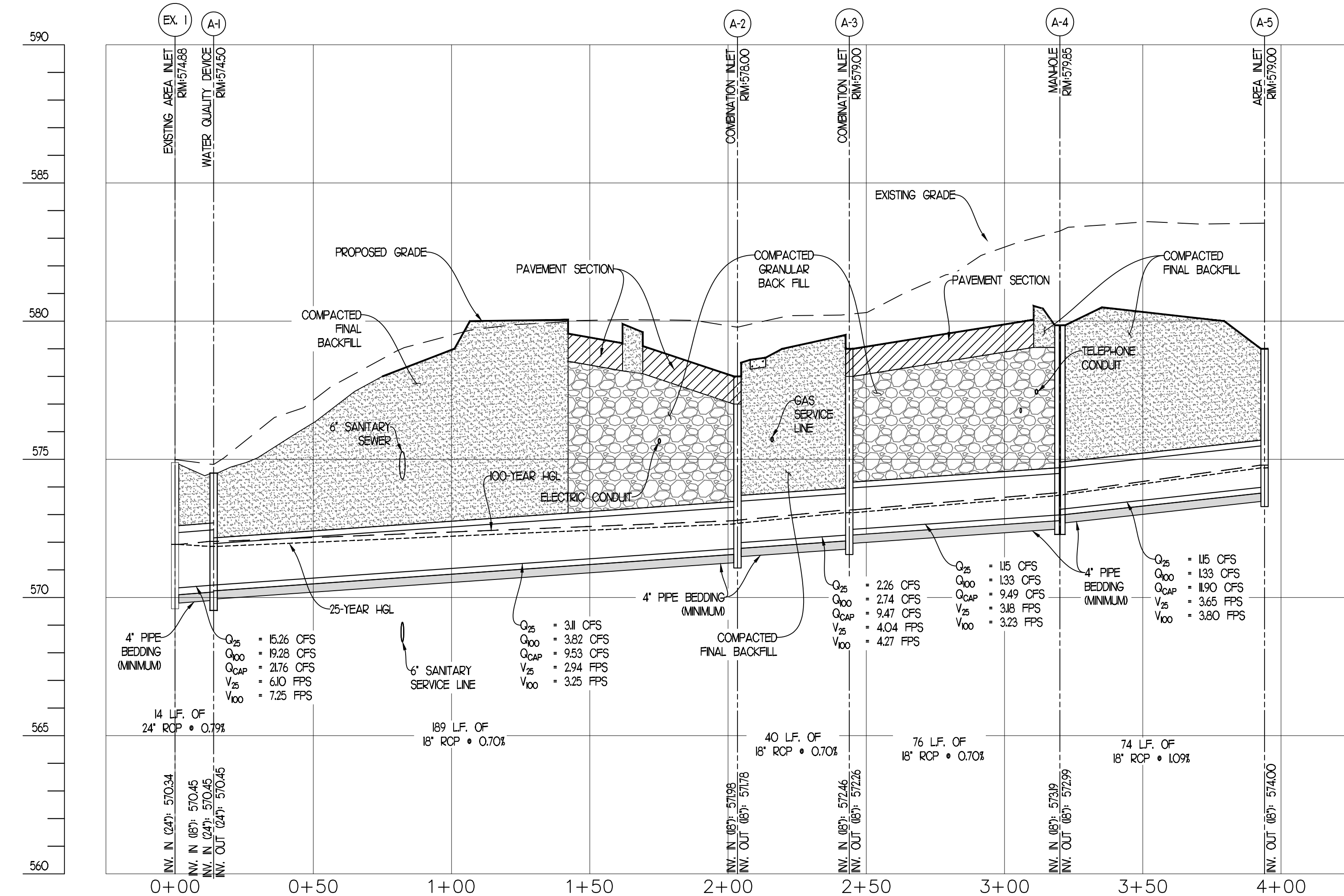
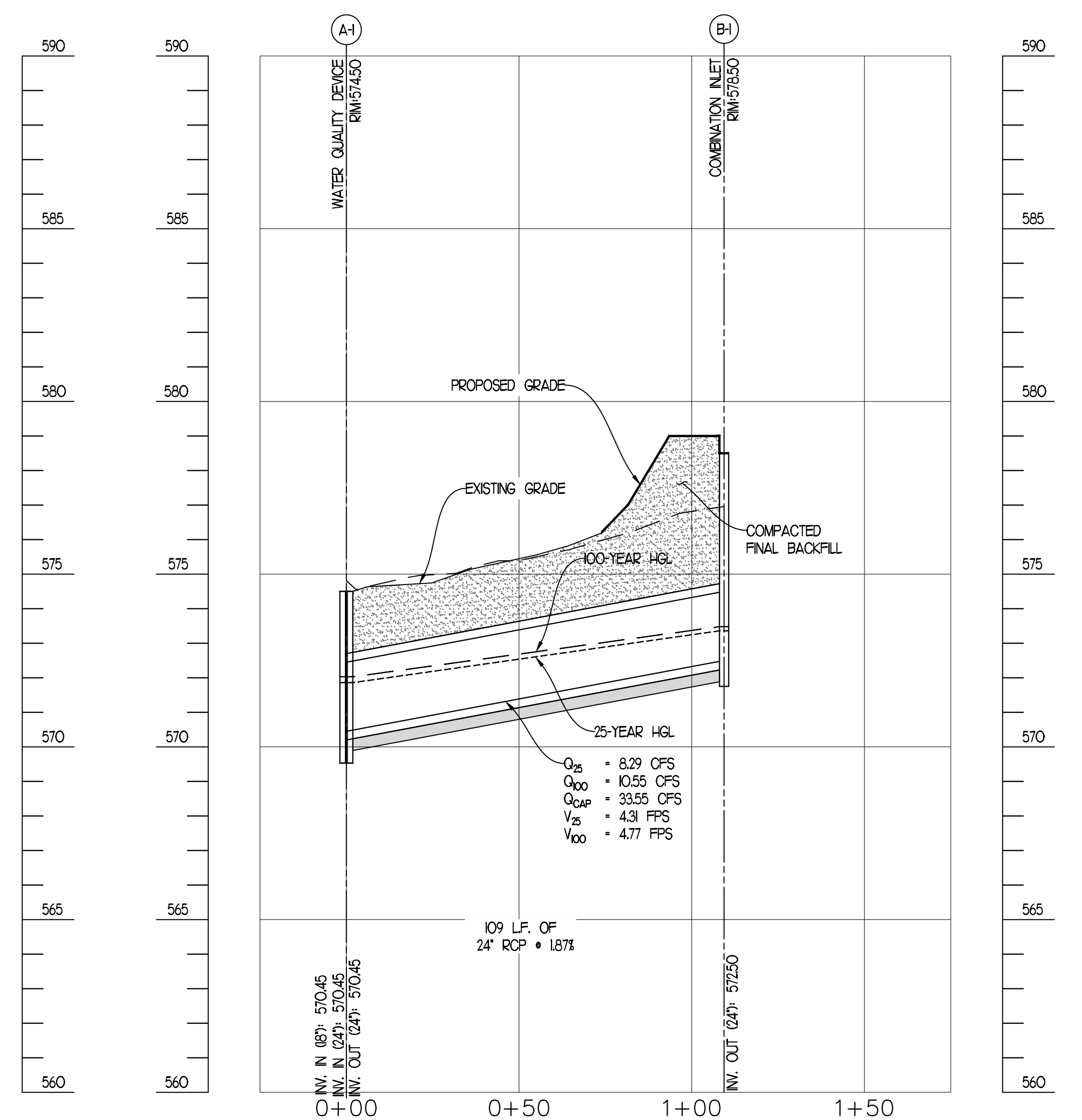


REVISIONS	BY



PRIVATE STORM DRAIN PROFILE "A"



PRIVATE STORM DRAIN PROFILE "B"

- STORM DRAIN NOTES**
1. ALL MANHOLE DIAMETERS AND INLET DIMENSIONS SHALL HAVE A MINIMUM INSIDE DIMENSION OF 4' DIAMETER (OR ROLLER) OR 4'x4' (SQUARE). STRUCTURES SHALL BE UPSIZED AS NEEDED TO ACCOMMODATE THE CONNECTING PIPE SIZES/ ANGLES.
 2. STORM DRAIN PIPE SHALL BE CLASS III WALL 18" RCP IN ACCORDANCE WITH ASTM C-76, UNLESS NOTED OTHERWISE.
 3. HIGH DENSITY POLYETHYLENE PIPE (HDPE) MAY BE USED AS AN ALTERNATE. ALL HDPE PIPE, JOINTS, AND FITTINGS SHALL MEET THE REQUIREMENTS OF AASHTO DESIGNATIONS M252 AND M294 TYPE S.
 4. PIPE LENGTHS ARE BASED ON HORIZONTAL DISTANCE FROM CENTER OF STRUCTURE TO CENTER OF STRUCTURE AND USED FOR DESIGN ONLY. CONTRACTOR TO FIELD VERIFY ACTUAL PIPE LENGTHS NEEDED FOR CONSTRUCTION.
 5. CONTRACTOR IS RESPONSIBLE FOR COMPARING THE STORM DRAIN WITH THE PROFILES FOR THE STORM DRAIN LINES AND INFORMING THE ENGINEER OF ANY CONFLICTS OR DISCREPANCIES PRIOR TO COMMENCEMENT OF CONSTRUCTION.
 6. STORM DRAIN PIPE SHALL HAVE WATER TIGHT JOINTS IN ACCORDANCE WITH ASTM C 361, C443, AND D332.

LEGEND

- PIPE BEDDING *
- COMPACTED FINAL BACKFILL **
- COMPACTED GRANULAR FINAL BACKFILL **

* PIPE BEDDING SHALL BE CLASS I-A WORKED BY HAND. IF GROUNDWATER IS ANTICIPATED THEN BEDDING SHALL BE CLASS I-B COMPACTED TO 95% STANDARD PROCTOR. CONTRACTOR SHALL REFERENCE THE STORM DETAILS INCLUDED IN THIS PLAN SET.

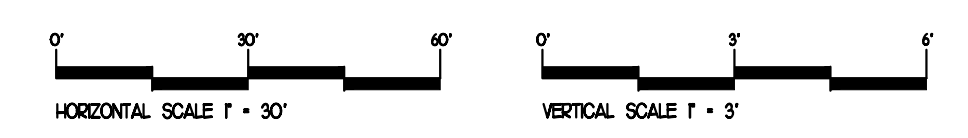
** FINAL BACKFILL SHALL BE CLASS I-A WORKED BY HAND, OR CLASS I-B OR CLASS II COMPACTED TO 95% STANDARD PROCTOR. BACKFILL NOT UNDER PAVED AREAS SHALL BE CLASS II COMPACTED TO 95% STANDARD PROCTOR. ALL BACKFILL AND PIPE BEDDING SHALL MEET THE STANDARDS AND REQUIREMENTS SET FORTH BY THE CITY OF O'FALLON.

STORM DRAIN STRUCTURE TABLE				
STR. #	TYPE	RIM/THROAT	INV. IN	INV. OUT
A-1	WATER QUALITY DEVICE	57450	57045 (A-2) 57045 (B-1)	57045 (EX. 1)
A-2	COMBINATION INLET	57800	57398 (A-3)	57178 (A-1)
A-3	COMBINATION INLET	57900	57246 (A-4)	57226 (A-2)
A-4	MANHOLE	57925	57399 (A-5)	57299 (A-3)
A-5	AREA INLET	57900	57400 (A-4) 57400 (A-4)	57400 (A-4)
B-1	COMBINATION INLET	57850	57250 (A-1)	57250 (A-1)
EX. 1	EXISTING AREA INLET	57488	57034 (A-1)	57034 (EX. 1)

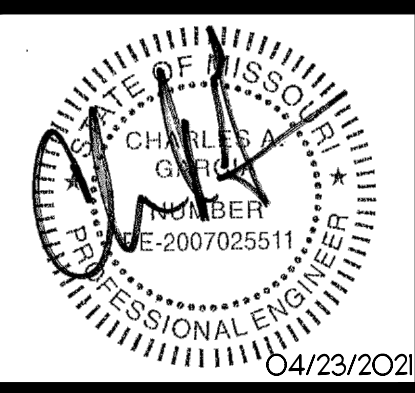
STORM PIPE TABLE					
STORM DRAIN PIPE	SIZE	LENGTH	SLOPE	INV. IN	INV. OUT
A-1 - EX. 1	24"	14'	0.79%	57045'	57034'
A-2 - A-1	18"	189'	0.70%	57178'	57045'
A-3 - A-2	18"	40'	0.70%	57226'	57398'
A-4 - A-3	18"	76'	0.70%	57299'	57246'
A-5 - A-4	18"	74'	1.09%	57400'	57399'
B-1 - A-1	24"	109'	1.87%	57250'	57045'

CONTRACTOR HAS THE OPTION TO SUBMIT AN ALTERNATIVE BRAND OF WATER QUALITY UNIT TO THE ENGINEER OF RECORD FOR REVIEW, SO LONG AS IT MEETS THE STANDARDS & REQUIREMENTS OF ALL REVIEWING AGENCIES AND PROVIDES THE REQUIRED WATER QUALITY VOLUME & FLOW RATE.

STORMWATER PROFILES



PLANS PREPARED BY:
 Charles A. Garcia, P.E.
 Missouri Professional Engineer License #2007025511
 209 West Stone Avenue
 Greenville, South Carolina 29609
 864-233-5497



CALIBER COLLISION
 700 CORPORATE CENTRE DRIVE
 O'FALLON, MO 63368
 CROSS DEVELOPMENT CO. OF FALLON, LLC.
 4838 MARSH RIDGE ROAD
 CARROLLTON, TX 75010
 TEL: (214) 614-8252

DRAWN	
BAC	
CHECKED	
TMB	
DATE	03/19/2021
SCALE	