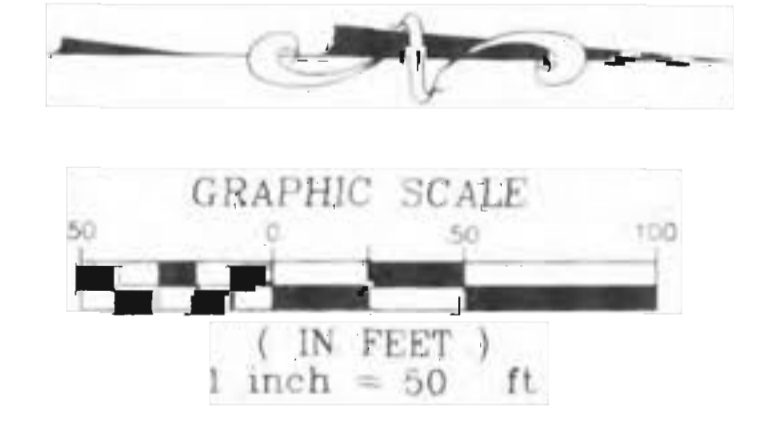
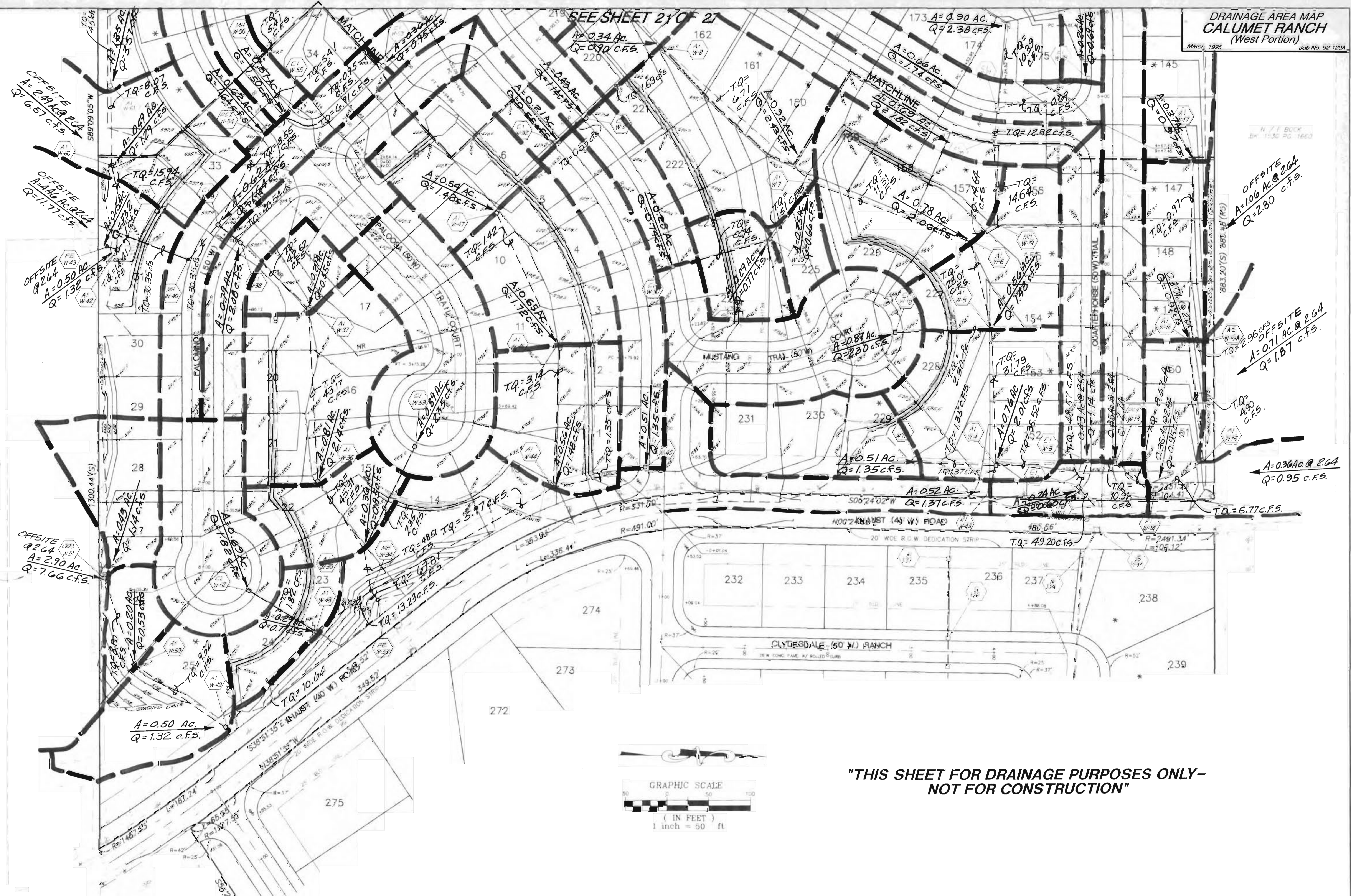


SEE SHEET 21 OF 27



"THIS SHEET FOR DRAINAGE PURPOSES ONLY-  
NOT FOR CONSTRUCTION"

**NOTE:**  
Underground utilities and structures have been plotted from available information and therefore, their location must be considered approximate only. It is the responsibility of the individual contractors to notify the utility companies before actual construction.