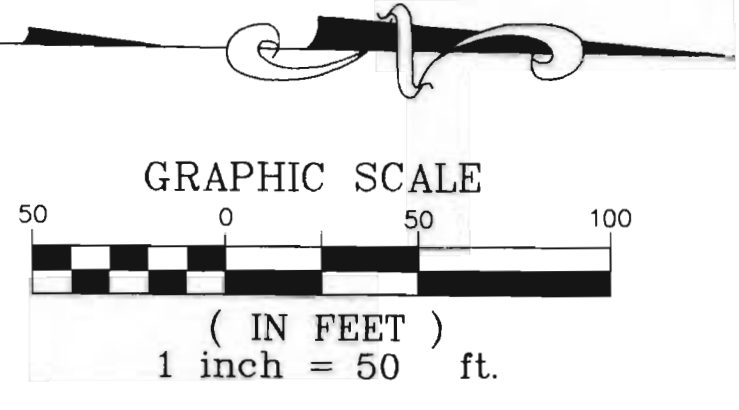


REV. 6-6-95 L.S.



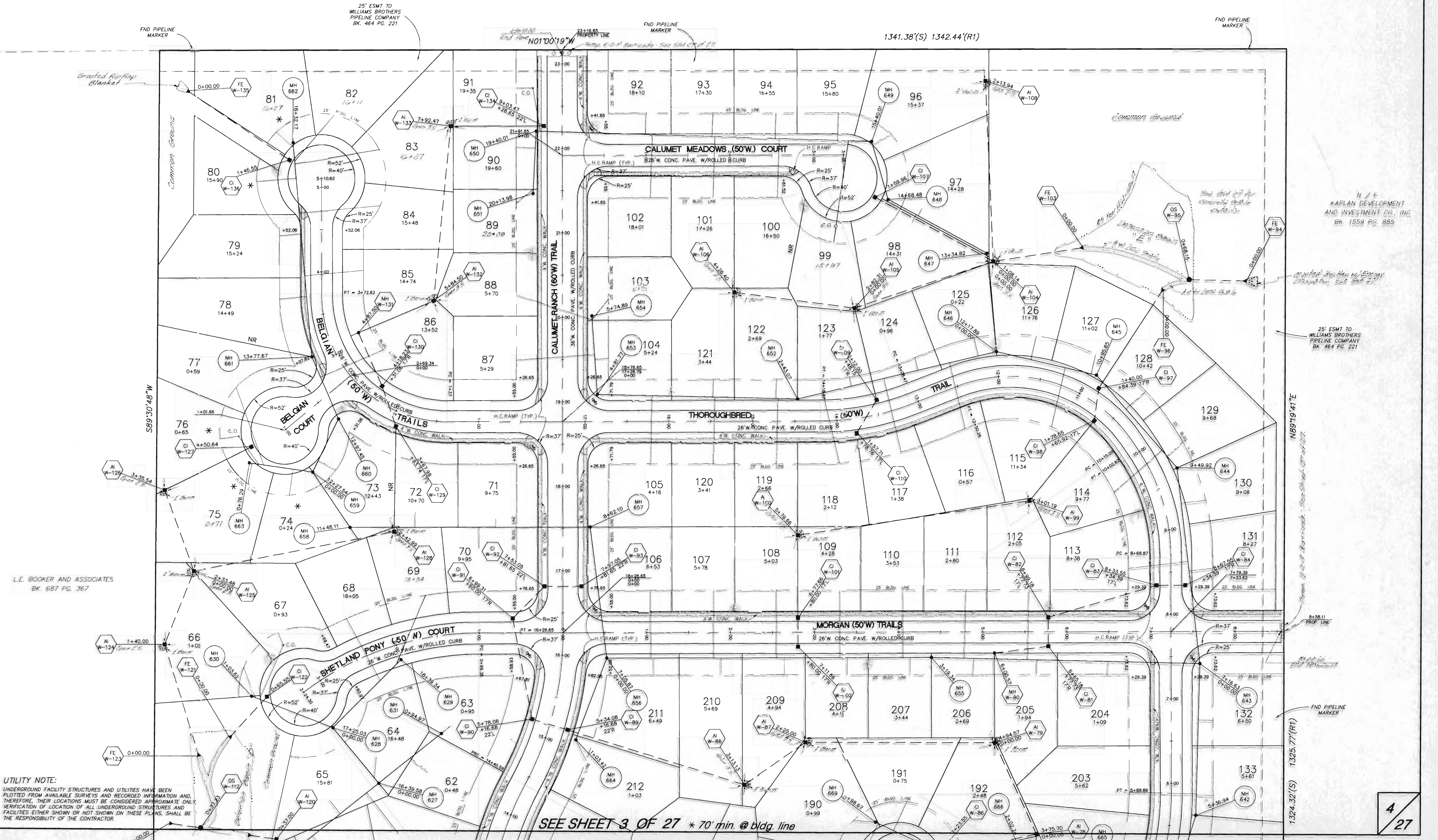
N / F
BARBARA M. HUTCHINGS
TRUSTEE OF THE BARBARA M. HUTCHINGS
REVOCABLE TRUST
BK. 1339 PG. 2001

N / F
KAPLAN DEVELOPMENT
AND INVESTMENT CO., INC.
BK. 1559 PG. 885

25' ESMT TO
WILLIAMS BROTHERS
PIPELINE COMPANY
BK. 464 PG. 221

N89°19'41"E
1324.38(S) 1342.44(R1)

1324.32(S) 1325.77(R1)



L.E. BOOKER AND ASSOCIATES
BK. 687 PG. 367

UTILITY NOTE:
UNDERGROUND FACILITY STRUCTURES AND UTILITIES HAVE BEEN PLOTTED FROM AVAILABLE SURVEYS AND RECORDED INFORMATION AND, THEREFORE, THEIR LOCATIONS MUST BE CONSIDERED APPROXIMATE ONLY. VERIFICATION OF LOCATION OF ALL UNDERGROUND STRUCTURES AND FACILITIES EITHER SHOWN OR NOT SHOWN ON THESE PLANS, SHALL BE THE RESPONSIBILITY OF THE CONTRACTOR.

SEE SHEET 3 OF 27 * 70' min. @ bldg. line