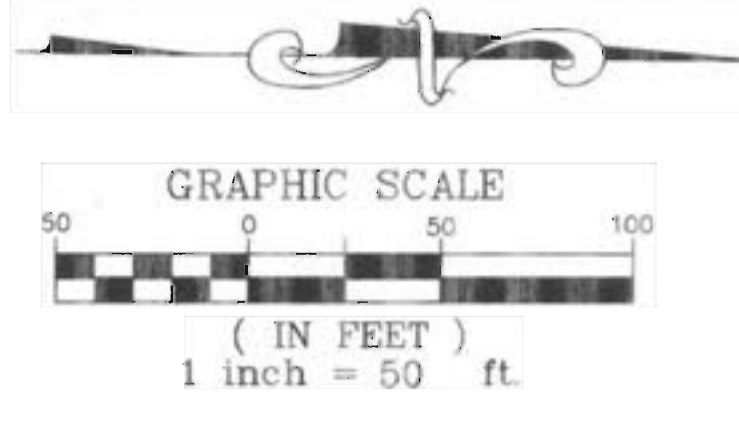
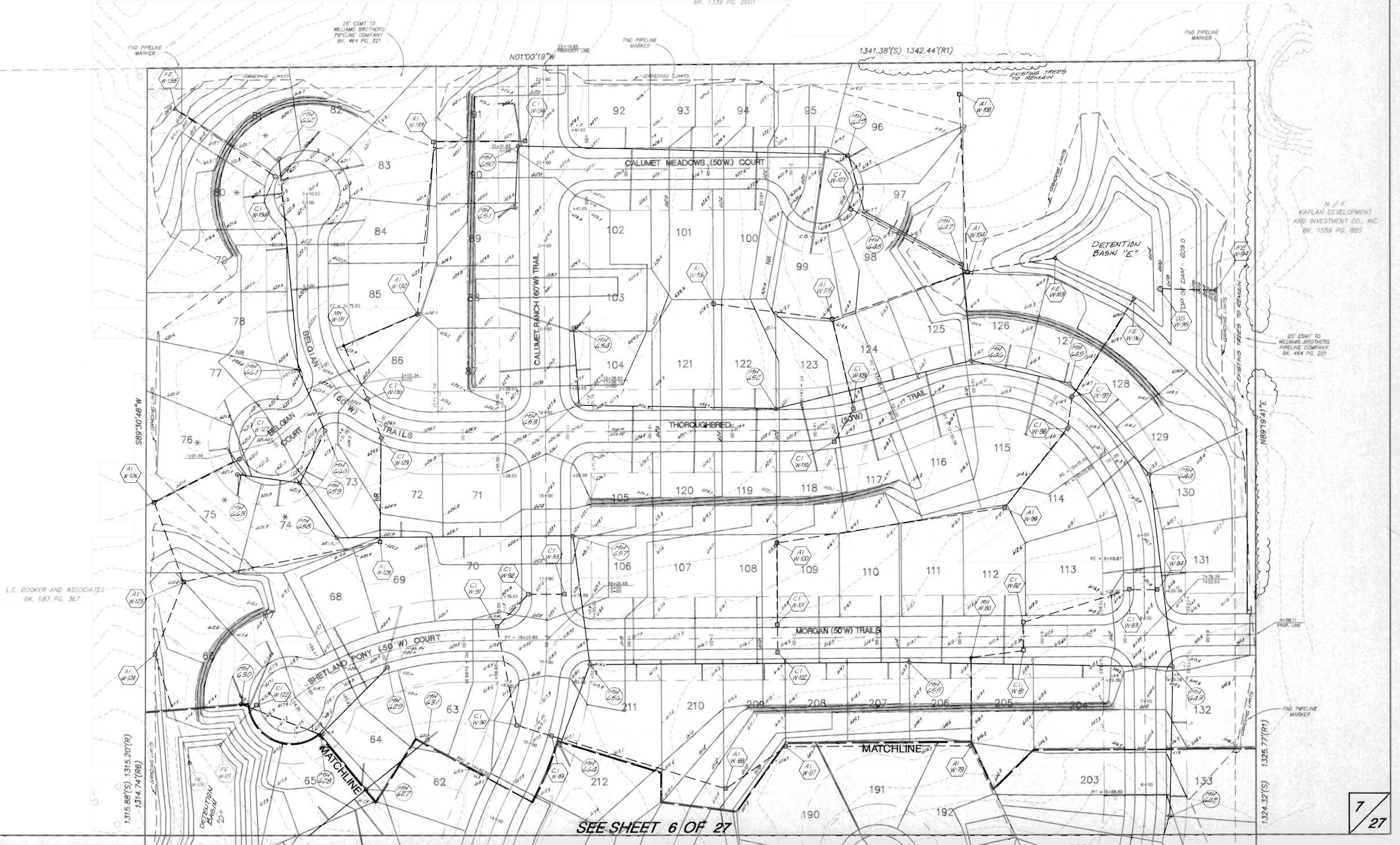


*NOTE: See previously approved Grading Plans for sediment & erosion control.*



N / F  
 BARBARA M. HUTCHINGS  
 TRUSTEE OF THE BARBARA M. HUTCHINGS  
 REVOCABLE TRUST  
 BK. 1339 PG. 2001



L.E. BOOKER AND ASSOCIATES  
 BK. 687 PG. 367

N / F  
 KAPLAN DEVELOPMENT  
 AND INVESTMENT CO., INC.  
 BK. 1559 PG. 885

25' ESMT TO  
 WILLIAMS BROTHERS  
 PIPELINE COMPANY  
 BK. 464 PG. 221

SEE SHEET 6 OF 27