

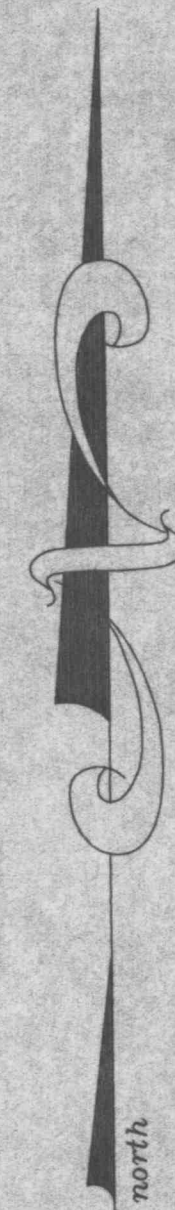
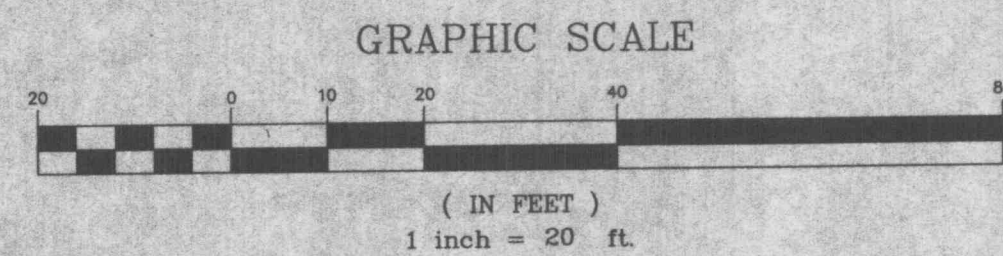
**REVISIONS:**  
 7-12-01 CLIENT REVISIONS  
 8-02-01 CITY COMMENTS  
 9-14-01 CITY COMMENTS

A SITE/GRADING PLAN FOR  
**CAR-X MUFFLER  
 AND BRAKE**

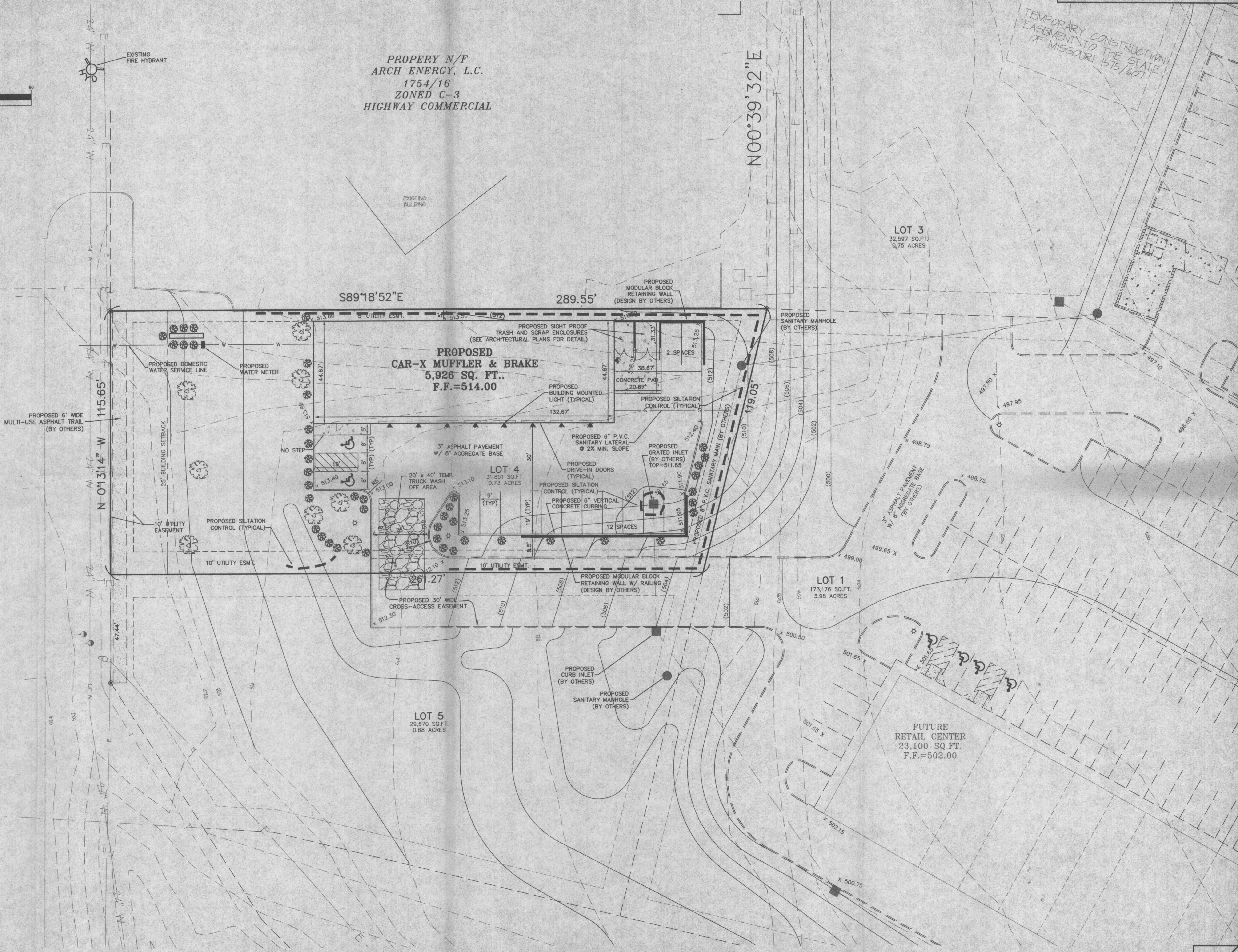
01-11336B

6-4-2001

PROPERTY N/F  
 ARCH ENERGY, L.C.  
 1754/16  
 ZONED C-3  
 HIGHWAY COMMERCIAL



MISSOURI STATE HIGHWAY 'K' (VARIABLE WIDTH)



NOTE: THE CROSS ACCESS EASEMENTS AND ENTRANCE TO MISSOURI STATE HIGHWAY 'K' DEPICTED HEREIN ARE REPRESENTATIONS OF THE RETAIL CENTER DEVELOPER AND ARE INCLUDED IN THESE PLANS SOLELY TO REFLECT THE IMPACT OF THE DEVELOPERS PROPOSED CONSTRUCTION PLAN TO OUR SITE.

E:\DWG\41000PLUS\11336b CarX Muffler and Brake\Construction\11336bcon.dwg Mon Sep 17 09:54:56 2001 STATION 11 SCOTT L