

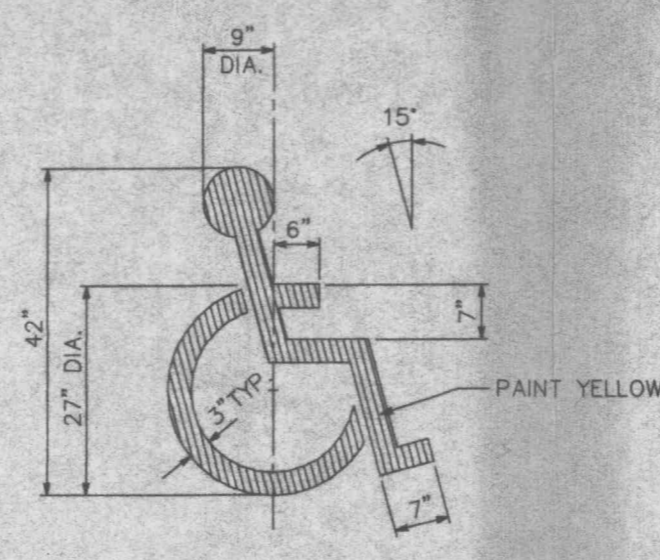
CONSTRUCTION SPECIFICATIONS

1. Stone Size - Use 2" stone, or reclaimed or recycled concrete equivalent.
2. Length - As required, but not less than 50 feet (except on a single residence lot where a 30 foot minimum length would apply).
3. Thickness - Not less than six (6) inches.
4. Width - Twenty (20) foot minimum, but not less than the full width at points where ingress or egress occurs.
5. Filter Cloth - Will be placed over the entire area prior to placing of stone. Filter will not be required on a single family residence lot.
6. Surface Water - All surface water flowing or diverted toward construction entrances shall be piped across the entrance. If piping is impractical, a mountable berm with 5:1 slopes will be permitted.
7. Maintenance - The entrance shall be maintained in a condition which will prevent tracking or flowing of sediment onto public rights-of-way. This may require periodic top dressing with additional stone as conditions demand and repair and/or cleanout of any measures used to trap sediment. All sediment spilled, dropped, washed or tracked onto public rights-of-way must be removed immediately.
8. Washing - Wheels shall be cleaned to remove sediment prior to entrance onto public rights-of-way. When washing is required, it shall be done on an area stabilized with stone and which drains into an approved sediment trapping device.
9. Periodic inspection and needed maintenance shall be provided after each rain.

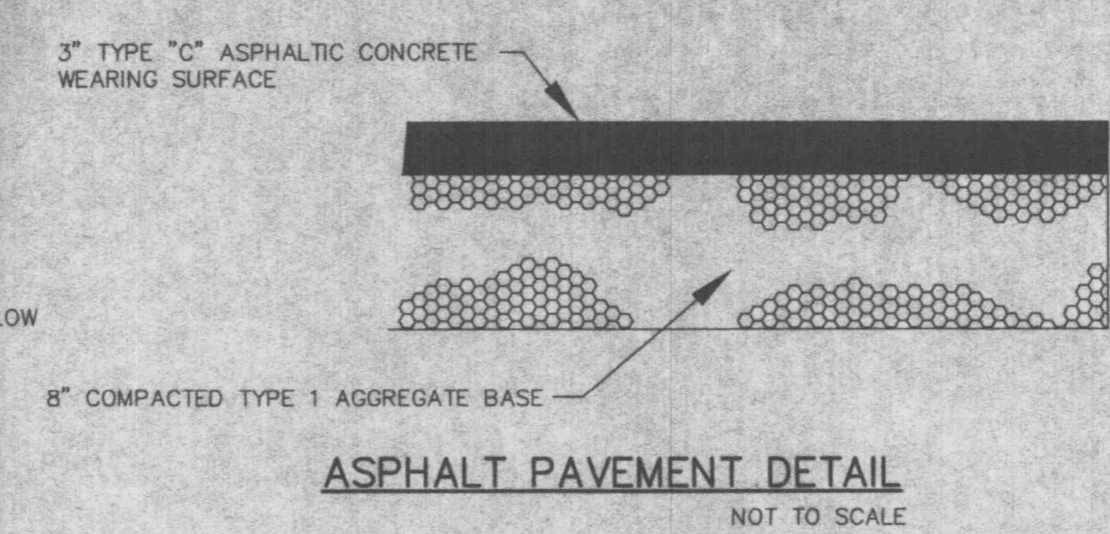


STANDARD SIGN FACE, STANDARD HIGHWAY DEPARTMENT, OR CITY STREET DEPARTMENT GAUGE, LETTERS AND BORDERS ARE GREEN, THE HANDICAP LOGO SQUARE IS BLUE AND THE BACKGROUND IS WHITE, GALVANIZED U CHANNEL POST 7'-0" LONG, SET 3'-0" INTO GRADE, SET BOTTOM OF SIGN 4'-0" ABOVE FINISHED GRADE.

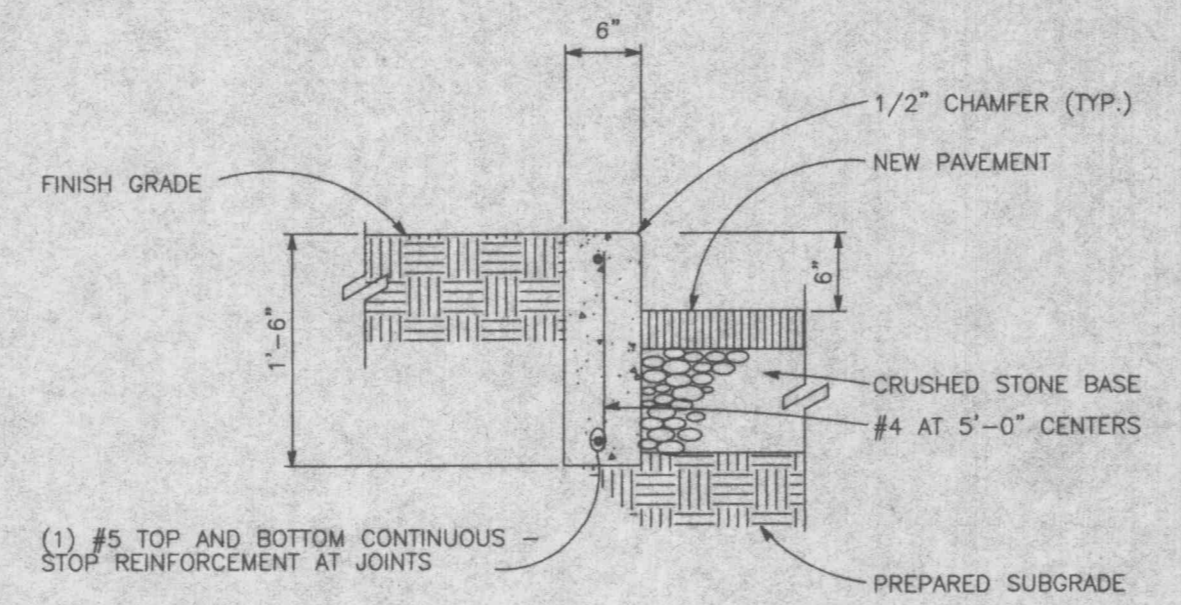
HANDICAP PARKING SIGN



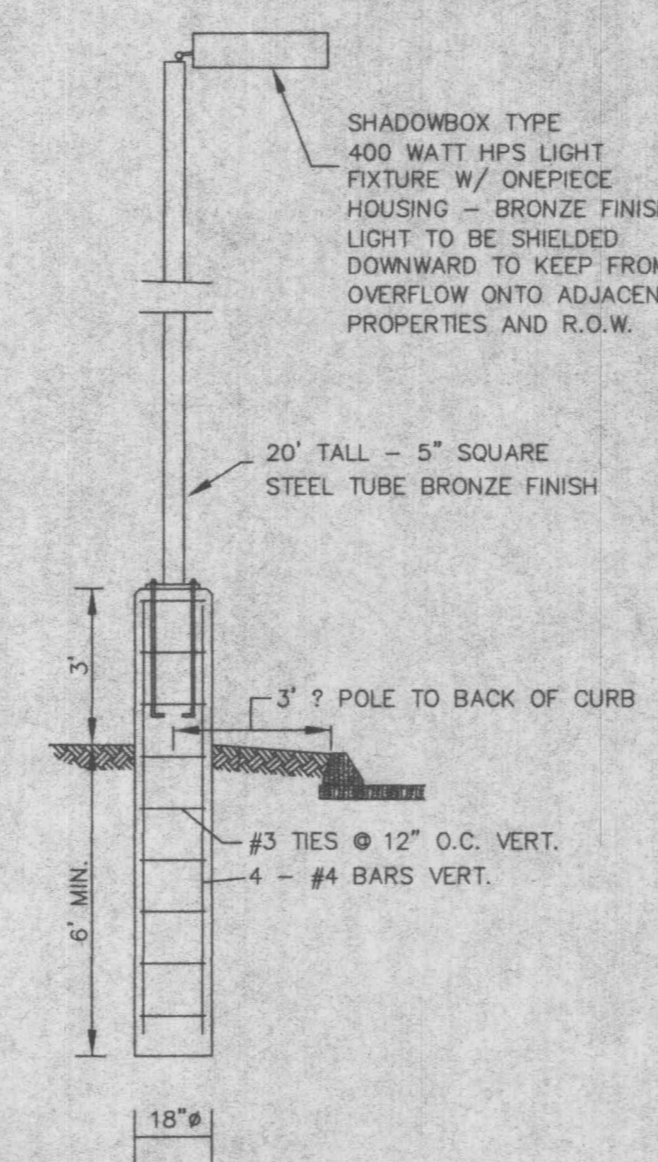
PAINTED HANDICAPPED PARKING SYMBOL



ASPHALT PAVEMENT DETAIL

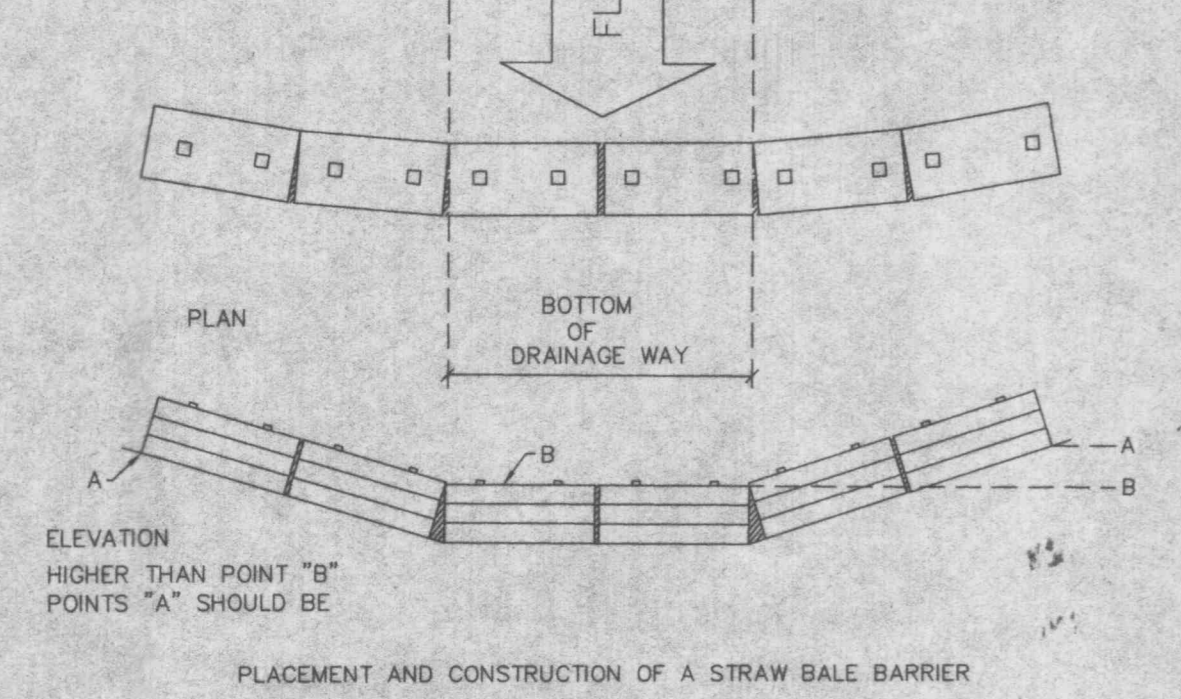
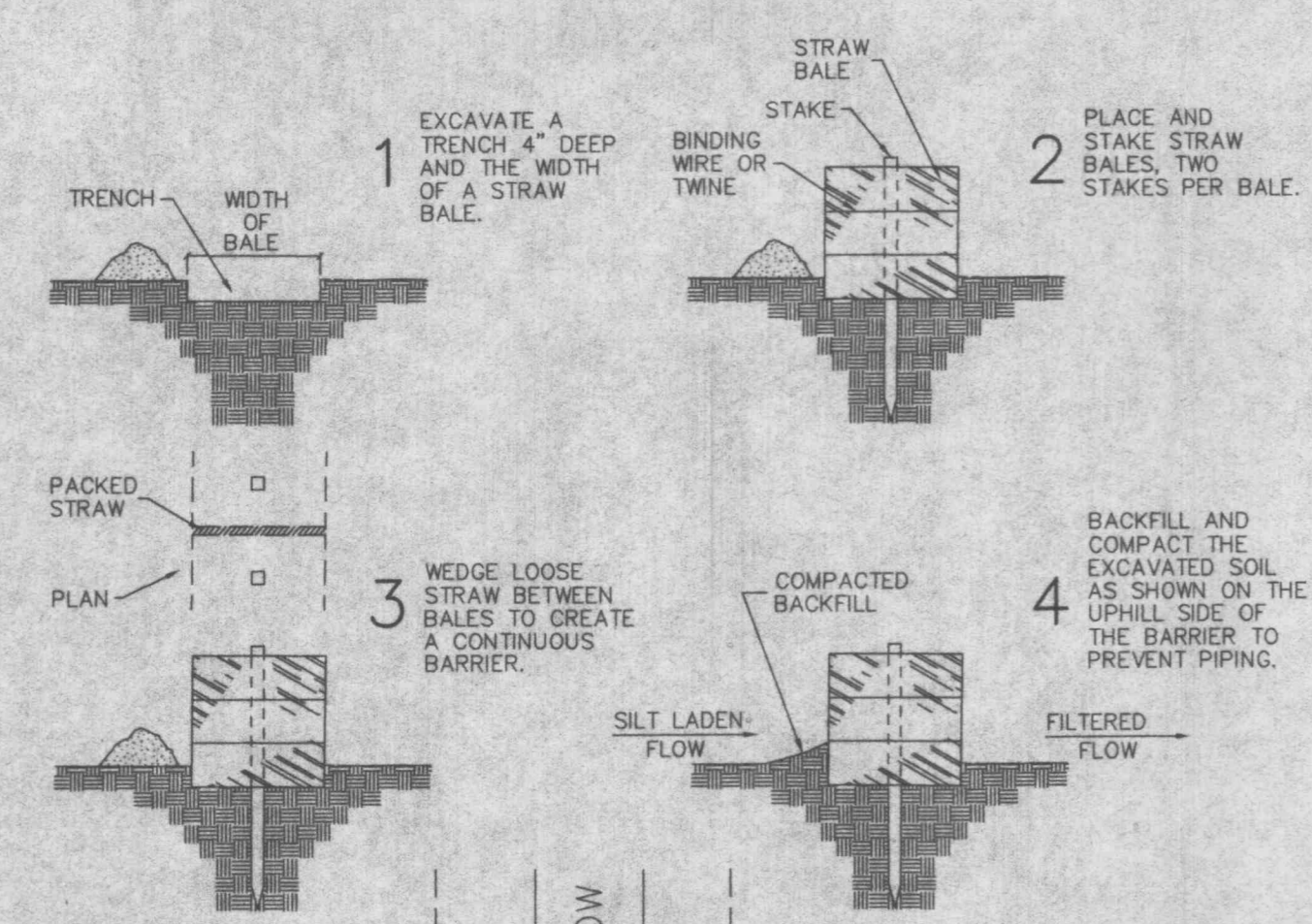


CONCRETE CURB DETAIL

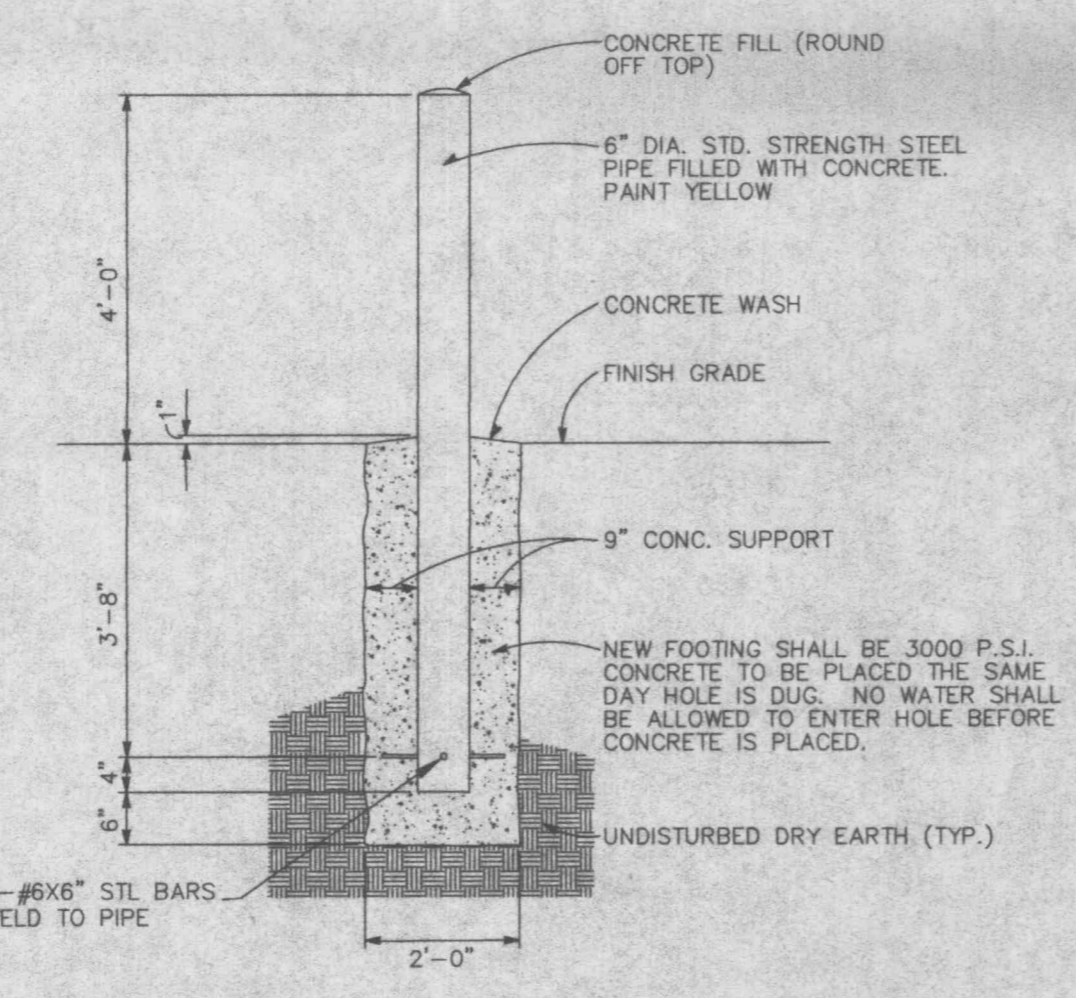


LIGHT POLE & BASE

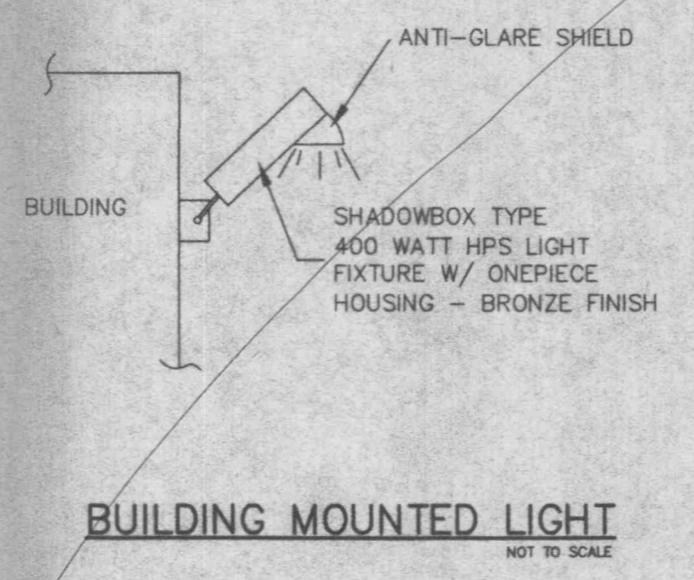
**STABILIZED CONSTRUCTION ENTRANCE/WASHDOWN AREA**  
 NOT TO SCALE



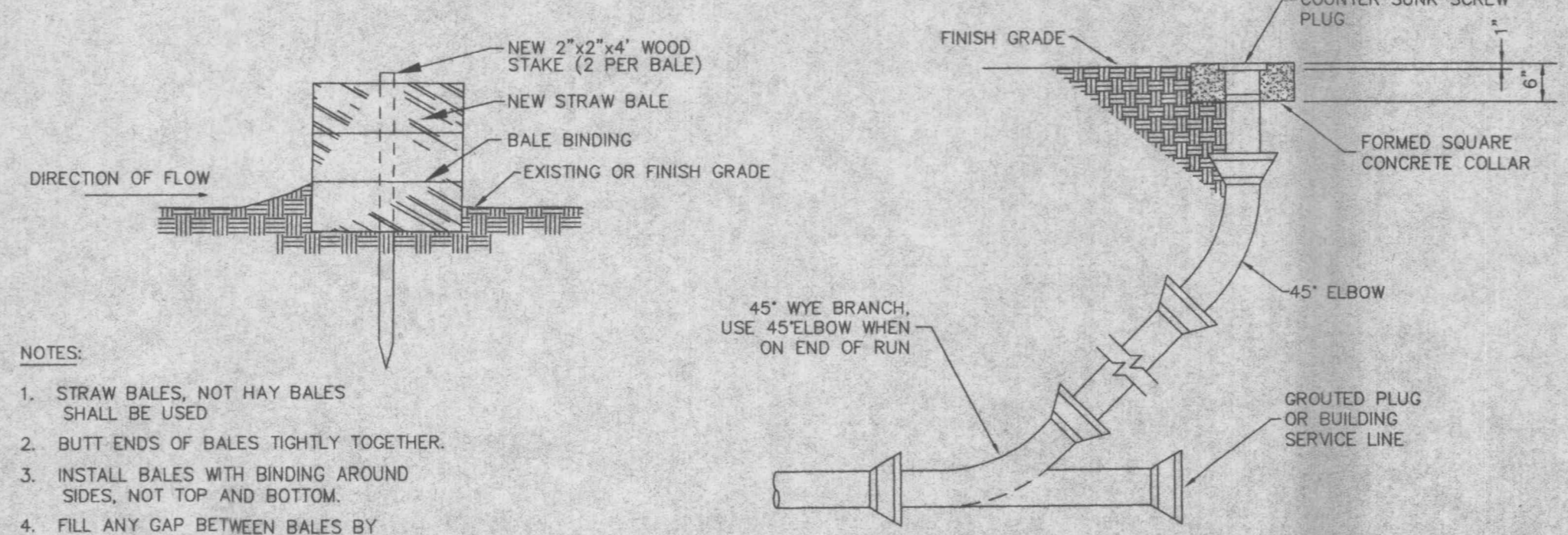
STRAW BALES BARRIERS FOR URBAN DEVELOPMENT SITES  
 APPENDIX C



PIPE BOLLARD DETAIL



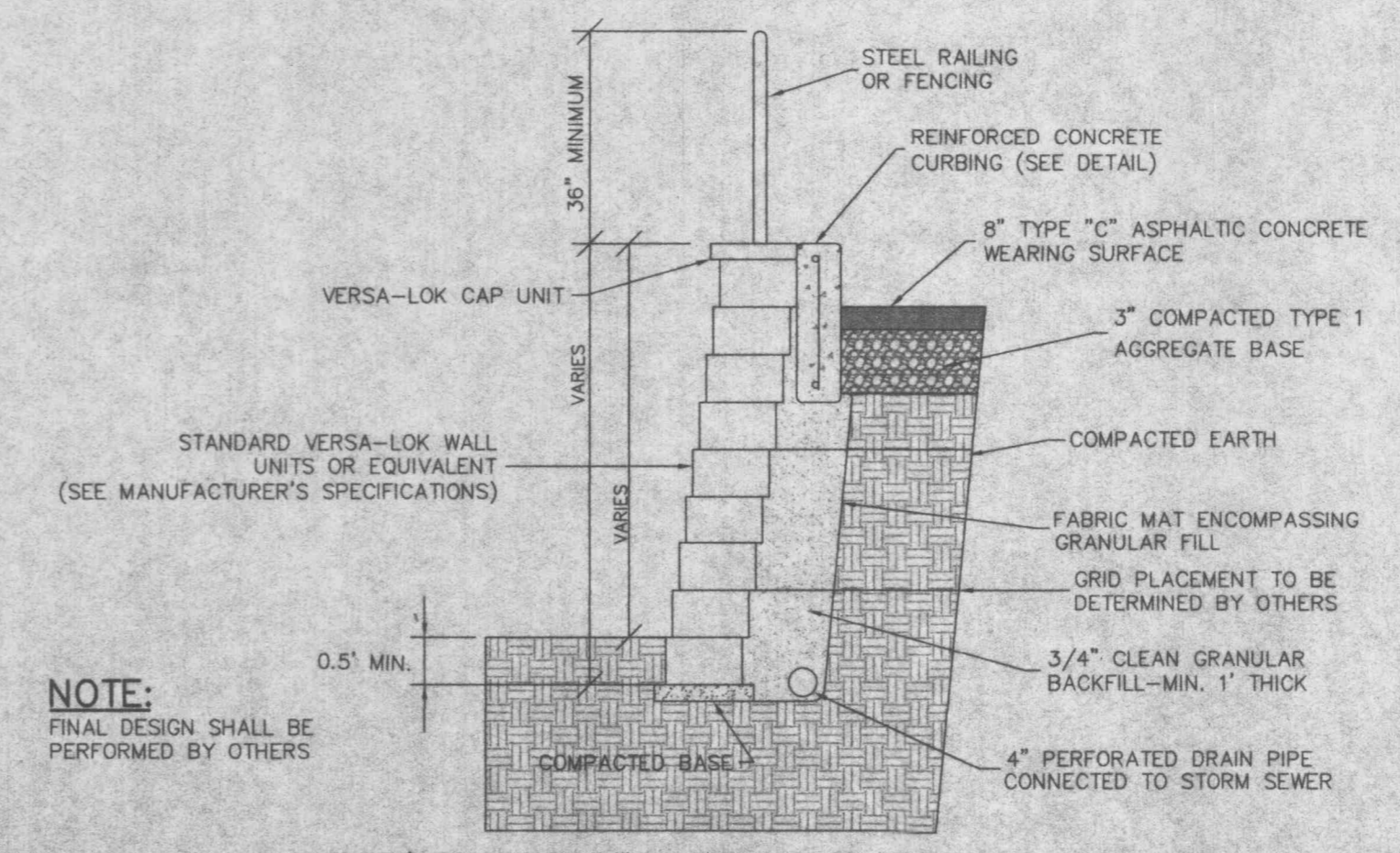
BUILDING MOUNTED LIGHT



SEWER CLEANOUT

- NOTES:
1. STRAW BALES, NOT HAY BALES SHALL BE USED.
  2. BUTT ENDS OF BALES TIGHTLY TOGETHER.
  3. INSTALL BALES WITH BINDING AROUND SIDES, NOT TOP AND BOTTOM.
  4. FILL ANY GAP BETWEEN BALES BY WEDGING LOOSE STRAW BETWEEN THEM.

SEDIMENT BARRIER



NOTE: FINAL DESIGN SHALL BE PERFORMED BY OTHERS

SEE MANUFACTURER'S SPECIFICATIONS FOR INSTALLATION PROCEDURE, AND GRID PLACEMENT  
 MODULAR BLOCK CONCRETE RETAINING WALL

E:\DM6\A11000P\US\113368\_CarX Muffler and Brake\Construction\113368.dwg Mon Sep 17 09:55:16 2001 STATION 11 SCOTT L.