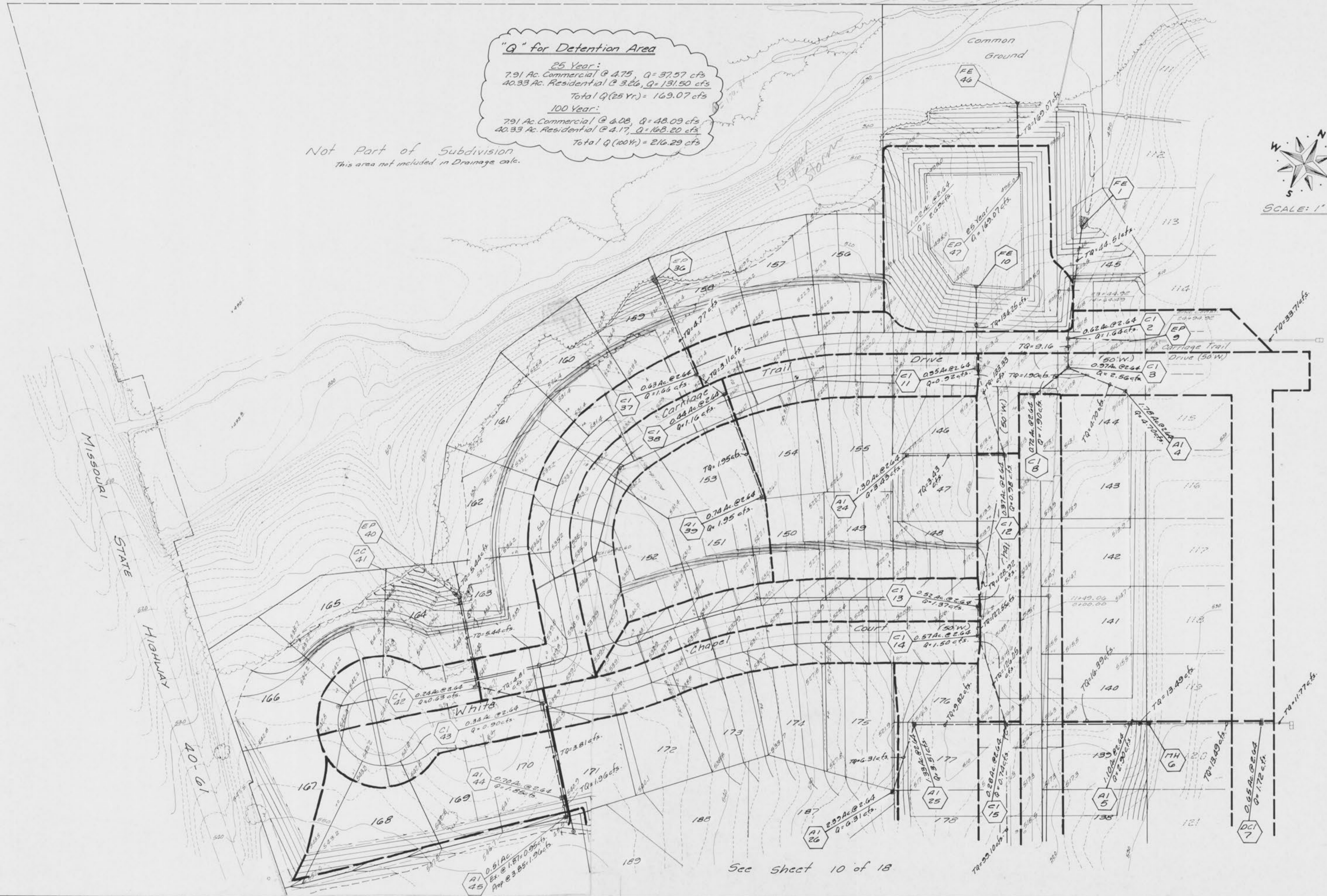


**"Q" for Detention Area**

25 Year:  
 7.91 Ac. Commercial @ 4.75, Q = 37.57 cfs  
 40.33 Ac. Residential @ 3.26, Q = 131.50 cfs  
 Total Q(25 Yr) = 169.07 cfs

100 Year:  
 7.91 Ac. Commercial @ 6.08, Q = 48.09 cfs  
 40.33 Ac. Residential @ 4.17, Q = 168.20 cfs  
 Total Q(100 Yr) = 216.29 cfs

Not Part of Subdivision  
 This area not included in Drainage calc.



See sheet 10 of 18