

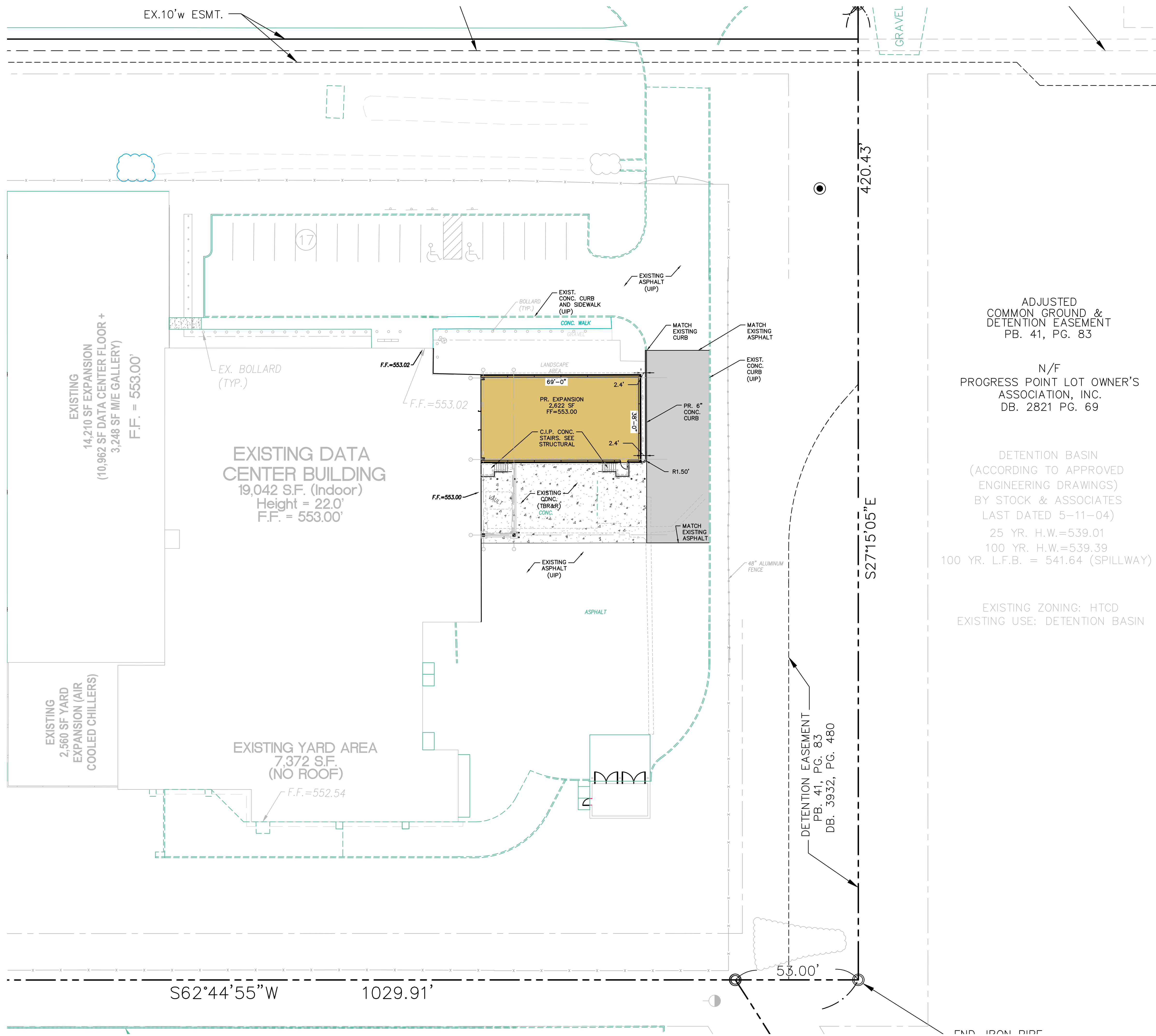
(IN FEET)
1 inch = 20 ft.

PAVEMENT LEGEND

- HEAVY DUTY ASPHALT
- CONCRETE PAVEMENT

GENERAL NOTES

1. SEE SHEET C6.0 FOR CURB, SIDEWALK, RAMP AND PAVEMENT JOINT DETAILS.
2. CONTRACTOR TO ADJUST SAWED CONTROL JOINT PATTERN AS NECESSARY.
3. DIMENSIONS ARE TO FACE OF CURB.



ADJUSTED COMMON GROUND & DETENTION EASEMENT
PB. 41, PG. 83

N/F
PROGRESS POINT LOT OWNER'S ASSOCIATION, INC.
DB. 2821 PG. 69

DETENTION BASIN
(ACCORDING TO APPROVED ENGINEERING DRAWINGS) BY STOCK & ASSOCIATES
LAST DATED 5-11-04)
25 YR. H.W.=539.01
100 YR. H.W.=539.39
100 YR. L.F.B. = 541.64 (SPILLWAY)

EXISTING ZONING: HTCD
EXISTING USE: DETENTION BASIN

PREPARED BY:
Stock & Associates
Consulting Engineers, Inc.
257 Chesterfield Business Parkway
St. Louis, MO 63015 PH. (636) 530-9100 FAX (636) 530-9130
e-mail: general@stockassoc.com
Web: www.stockassoc.com

SITE IMPROVEMENT PLANS FOR:
CENTENE DATA CENTER BUILDING EXPANSION
6430 WELDON SPRING ROAD
CITY OF FALLON, MISSOURI 63376

STATE OF MISSOURI
GEORGE MICHAEL STOCK
NUMBER PE-25116
12/28/2020
GEORGE M. STOCK E-25116
CIVIL ENGINEER
CERTIFICATE OF AUTHORITY
NUMBER: 000996

REVISIONS:

| | | |
|---|------------|-----------------------------|
| 1 | 2020-11-11 | - 75% CD SET PERMIT/500 SET |
| 2 | 2020-12-15 | - 100% PERMIT/500 SET |
| 3 | 2020-12-28 | - REVISED PER CITY COMMENTS |

| | |
|---------------------|------------------------|
| DRAWN BY: J.M.B. | CHECKED BY: G.M.S. |
| DATE: 11/6/2020 | JOB NO: 209-4511.10 |
| DUCKETT CREEK #: | BASE MAP #: |
| S.C.C. H&T #: | H&T S.U.P. #: |
| M.D.N.R. #: | MORA-: |

SHEET TITLE:
GEOMETRIC AND PAVING PLAN
SHEET NO.:
C5.1