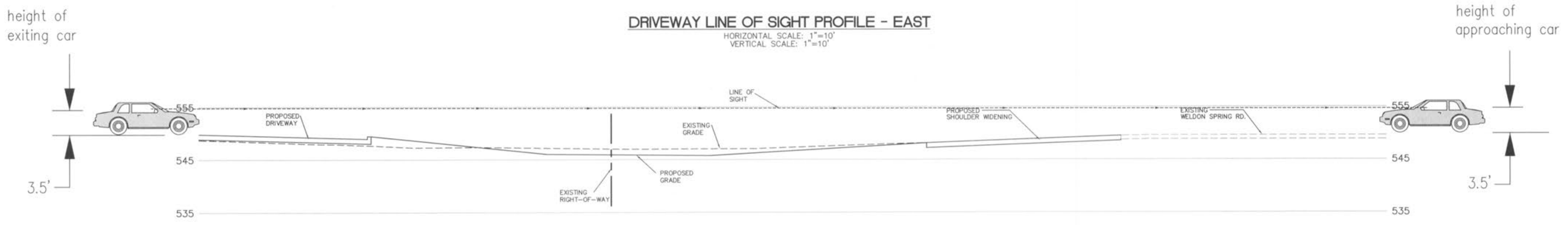


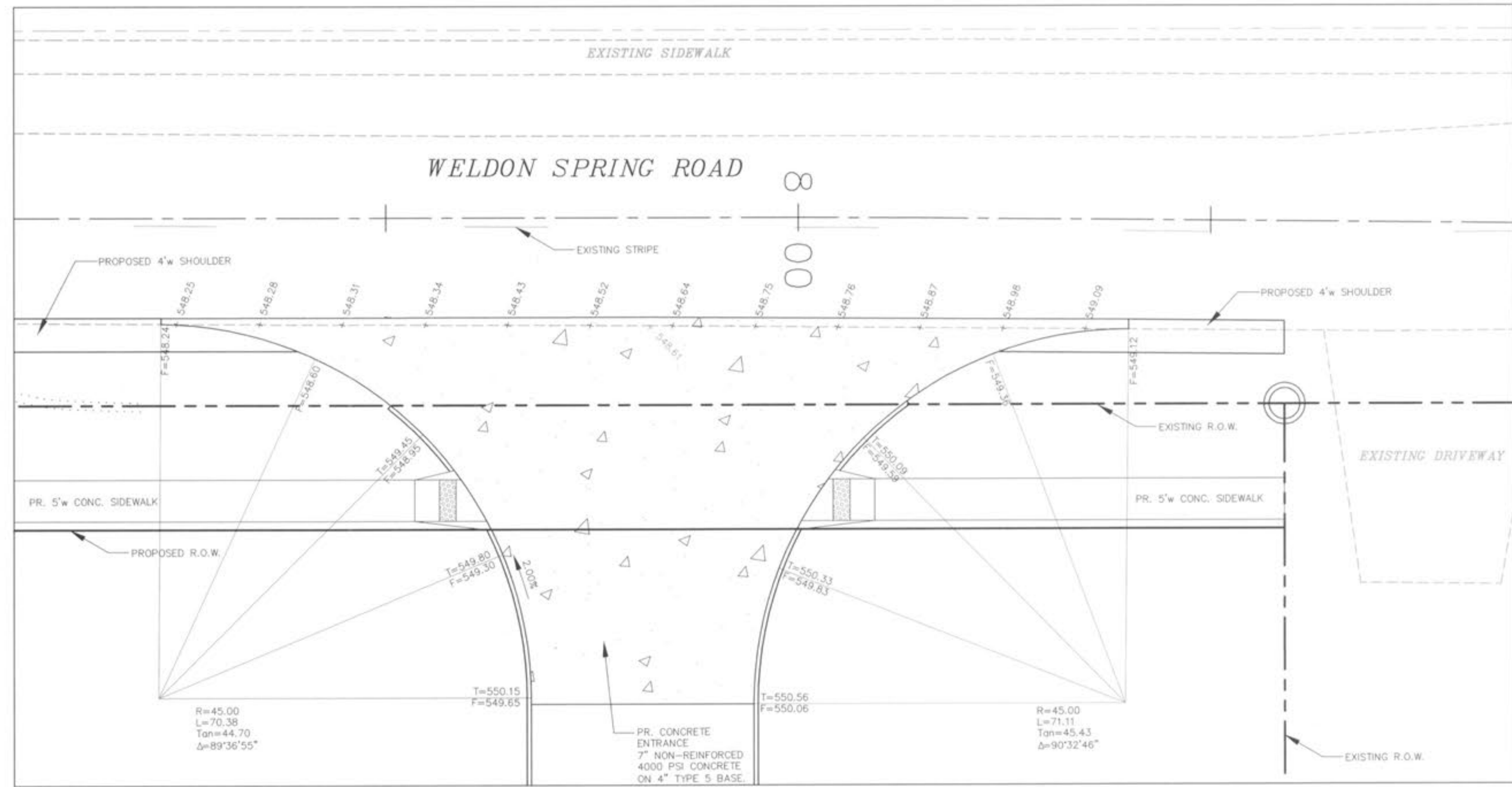
DRIVEWAY LINE OF SIGHT PROFILE - EAST

HORIZONTAL SCALE: 1"=10'
VERTICAL SCALE: 1"=10'



DRIVEWAY LINE OF SIGHT PROFILE - WEST

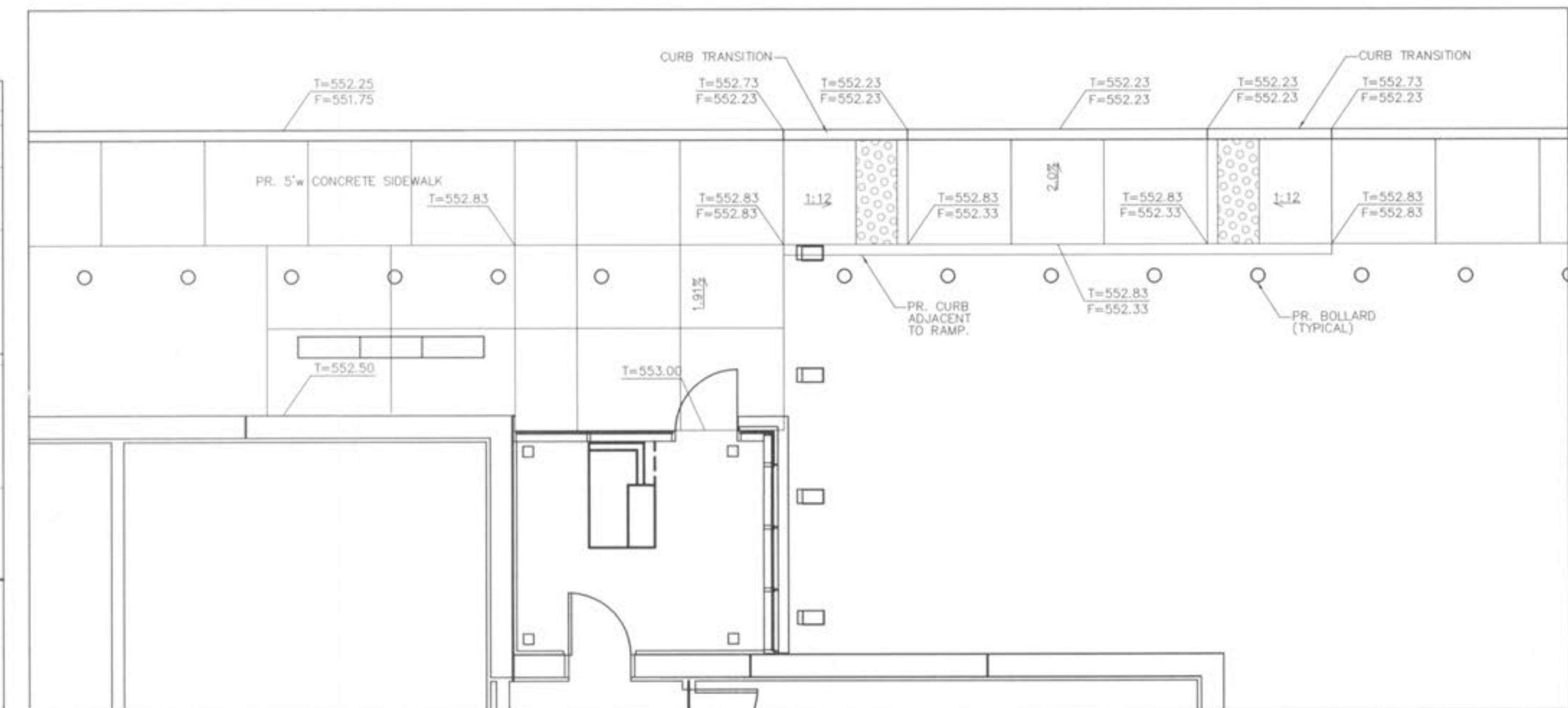
HORIZONTAL SCALE: 1"=10'
VERTICAL SCALE: 1"=10'



SITE ENTRANCE WARPING DETAIL

SCALE: 1" = 10'

NOTES:
1. SPOT ELEVATIONS SHOWN TO FINISH GRADE.



HANDICAP RAMP WARPING DETAIL

SCALE: 1" = 5'

- 5 2010-11-03 FOR PERMIT
- 4 2010-07-21 REVISED PER CITY & PWS COMMENTS
- 3 2010-06-30 REVISED PER CITY COMMENTS
- 2 2010-16-09 PROGRESS PRINTING #2
- 1 2010-05-24 REVISED PER SEWER DISTRICT COMMENTS

SITE WARPING DETAILS
CENTENE DATA CENTER

Stock & Associates

Consulting Engineers, Inc.

257 Chesterfield Business Parkway
St. Louis, MO 63005
PH. (636) 530-9100
FAX (636) 530-9130
e-mail: general@stockassoc.com
Web: www.stockassoc.com

NOV. 3, 2010			<p>GEORGE M. STOCK E-25116 CIVIL ENGINEER CERTIFICATE OF AUTHORITY NUMBER: 000996</p>	
DATE: 05/07/10	CHECKED BY: G.M.S.	DATE: 05/07/10	JOB NUMBER: 209-4511	SHEET: C9 of 21

D:\PRA\K500_2004511\Draw\1-Plans\4511-Break.dwg Nov 03, 2010 - 5:28pm