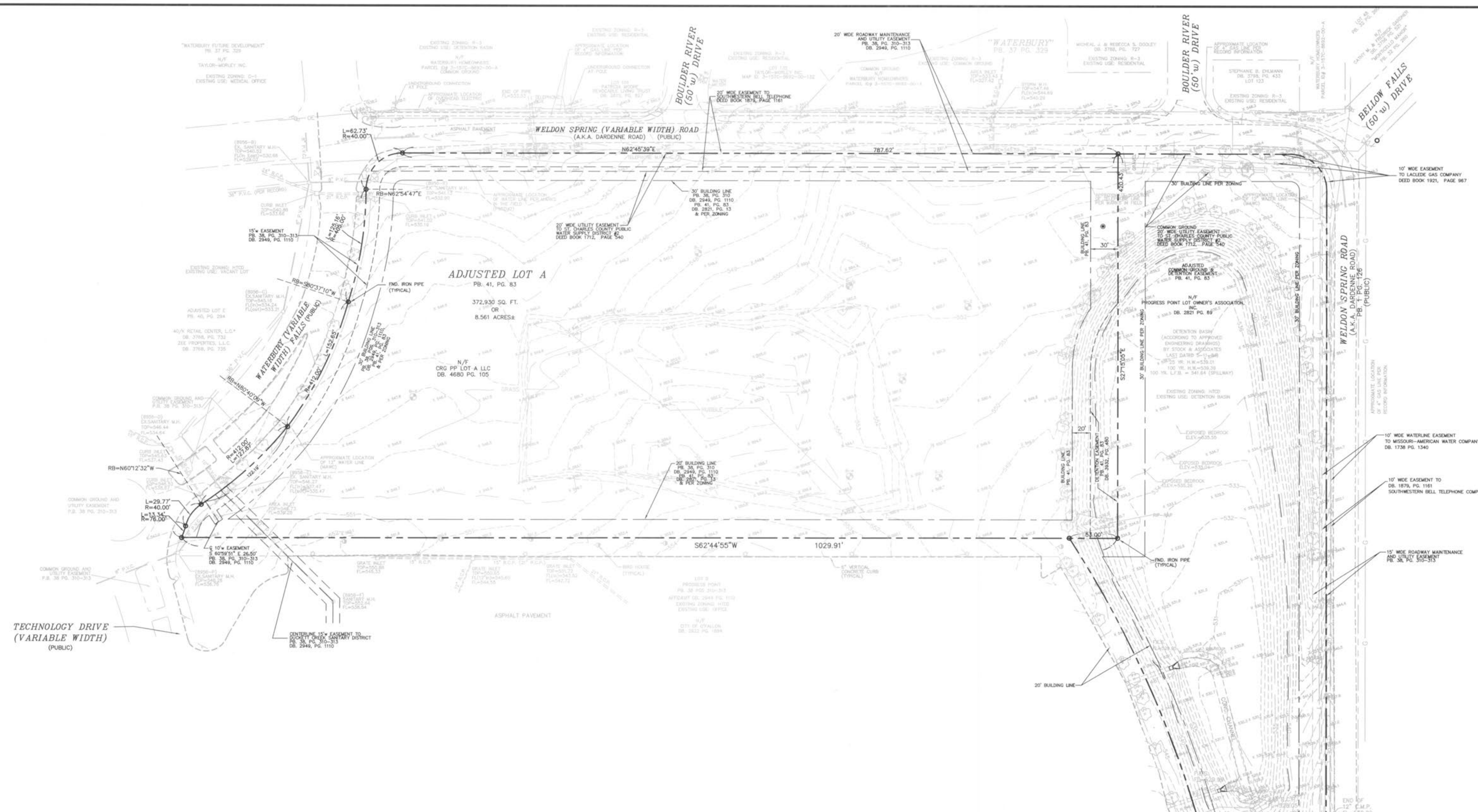
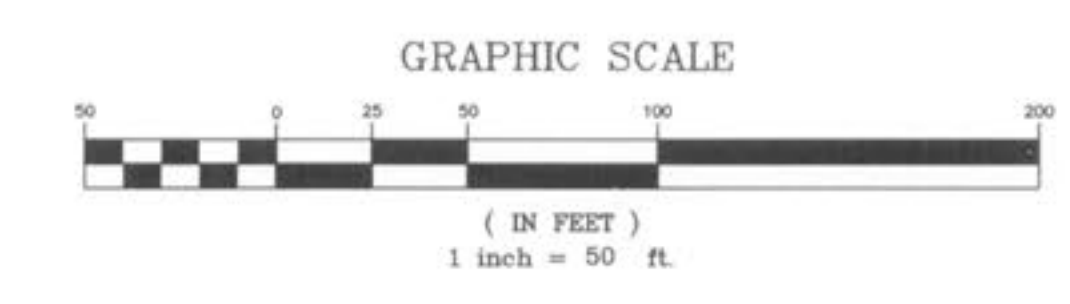


C:\URAW\4500\2094511\Civil\Plan\011-Base.dwg Nov 03, 2010 5:55pm



TECHNOLOGY DRIVE (VARIABLE WIDTH) (PUBLIC)

ADJUSTED LOT A  
PB. 41, PG. 83  
372,930 SQ. FT.  
OR  
8.561 ACRES±



- 5 2010-11-03 FOR PERMIT
- 4 2010-07-21 REVISED PER CITY & PWS COMMENTS
- 3 2010-06-30 REVISED PER CITY COMMENTS
- 2 2010-16-09 PROGRESS PRINTING #2
- 1 2010-05-24 REVISED PER SEWER DISTRICT COMMENTS

NOV. 3, 2010

STATE OF MISSOURI  
 REGISTERED PROFESSIONAL ENGINEER  
 GEORGE M. STOCK  
 NUMBER E-2511A

GEORGE M. STOCK E-2511A  
 CIVIL ENGINEER  
 CERTIFICATE OF AUTHORITY  
 NUMBER: 000996

EXISTING CONDITIONS PLAN  
 CENTENE DATA CENTER

**Stock & Associates**  
 Consulting Engineers, Inc.

257 Chesterfield Business Parkway  
 St. Louis, MO 63005  
 PH. (636) 530-9100  
 FAX (636) 530-9100  
 e-mail: general@stockassoc.com  
 Web: www.stockassoc.com

DRAWN BY: J.M.B.	DATE: 05/07/10	CHECKED BY: G.M.S.	DATE: 05/07/10	JOB NUMBER: 209-4511	SHEET: C3 of 21
---------------------	-------------------	-----------------------	-------------------	-------------------------	--------------------