

NOTE: PROVIDE STORM SEWER INLET MARKINGS PER FOLLOWING:

NOTE: PROVIDE A MARKING ON THE STORM SEWER INLETS. THE CITY WILL ALLOW THE FOLLOWING MARKERS AND ADHESIVE PROCEDURES ONLY AS SHOWN IN THE TABLE BELOW OR AN APPROVED EQUAL BY ALMETEK INDUSTRIES. "PEEL AND STICK" ADHESIVE PADS WILL NOT BE ALLOWED.

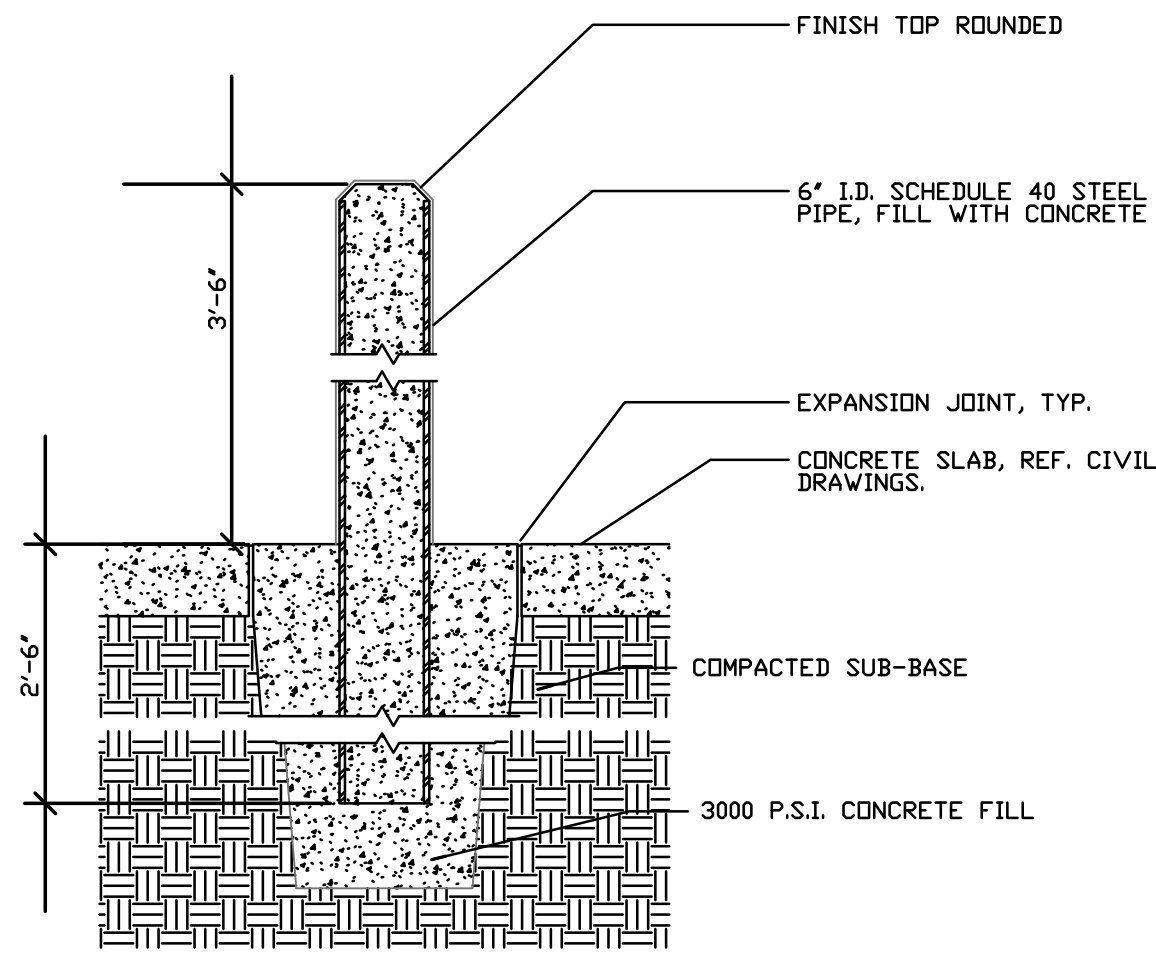
Manufacturer	Size	Adhesive	Style	Message (Part #)	Website
ACP International	3 7/8"	Epoxy	Crystal Cap	No Dumping Drains To Waterways (SD-W-Cc)	www.acpinternational.com
DAS Manufacturing, Inc.	4"	Epoxy	Standard Style	No Dumping Drains To Stream (#SDS)	www.dasmanufacturing.com

PRECAST CONCRETE STORMWATER STRUCTURES

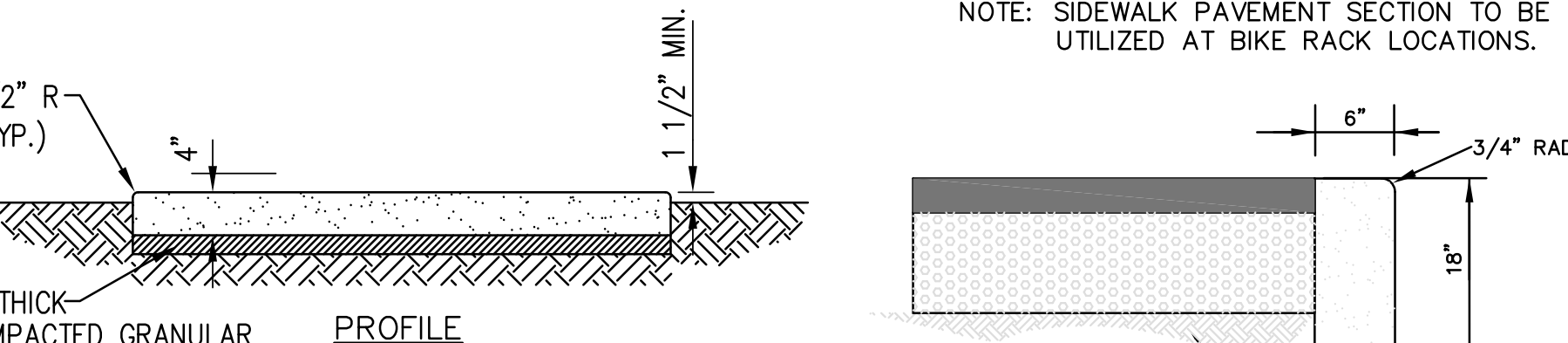
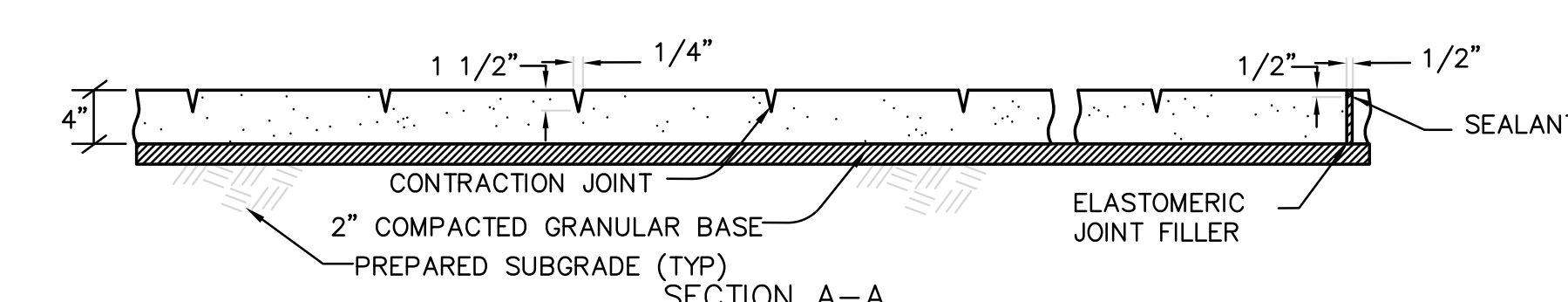
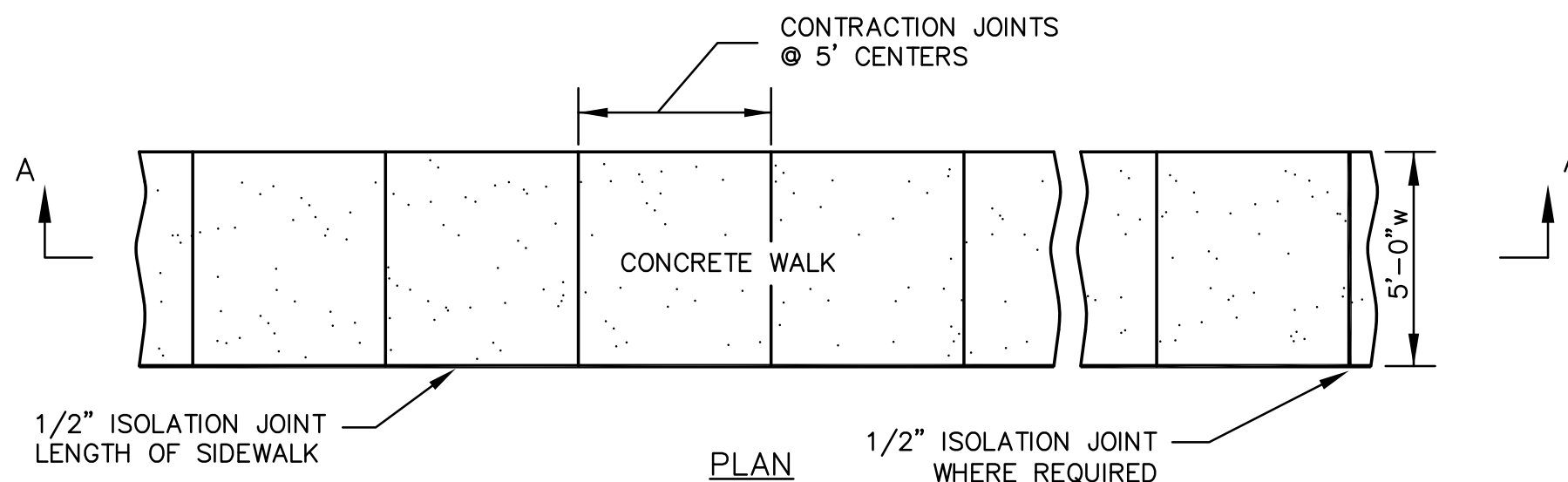
MINIMUM DISTANCE FLOWLINE TO TOP OF STONE OR GRATE

PIPE ID NOMINAL INCHES	AREA INLET CIRCULAR BASE DIA.				2 GRATE INLET CIRCULAR BASE DIA. SQUARE (MAX)				SINGLE STREET INLET CIRCULAR BASE DIA. RECTANGLE (MAX)			
	42"	48"	60"	72"	42"	48"	60"	72"	42"	48"	60"	72"
12"	45"	48"	60"	72"	38"	48"	60"	72"	34"	51"	61"	44"
15"	48"	60"	72"	84"	41"	51"	61"	72"	37"	55"	65"	48"
18"	52"	66"	81"	96"	44"	54"	64"	75"	40"	58"	68"	51"
21"	55"	69"	84"	101"	47"	57"	67"	78"	43"	61"	71"	54"
24"	58"	72"	87"	104"	51"	61"	71"	82"	46"	64"	74"	57"
27"		78"	93"	108"	55"	65"	75"	86"	49"	67"	77"	60"
30"		82"	97"	112"	59"	69"	79"	90"	52"	70"	80"	63"
33"		85"	100"	115"	62"	72"	82"	93"	55"	73"	83"	66"

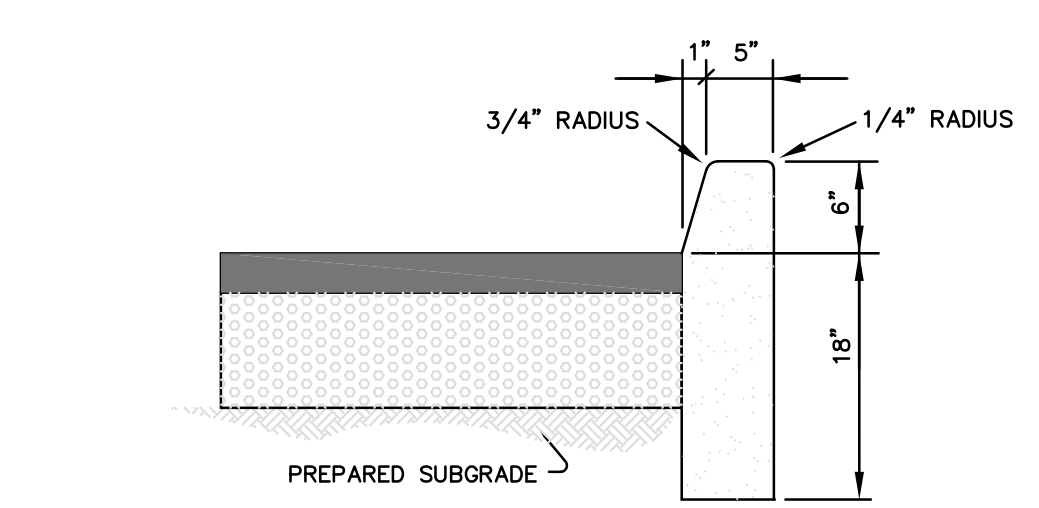
NOTE: 1. 48" DIA. BASE REQUIRES 7" HIGH TRANSITION SECTION TO 42" DIA., SIMILAR TO "ADAPTER RING".
2. 60" DIA. BASE REQUIRES 24" HIGH CONCENTRIC REDUCER TRANSITION TO 42" DIA., SIMILAR TO "ADAPTER RING".



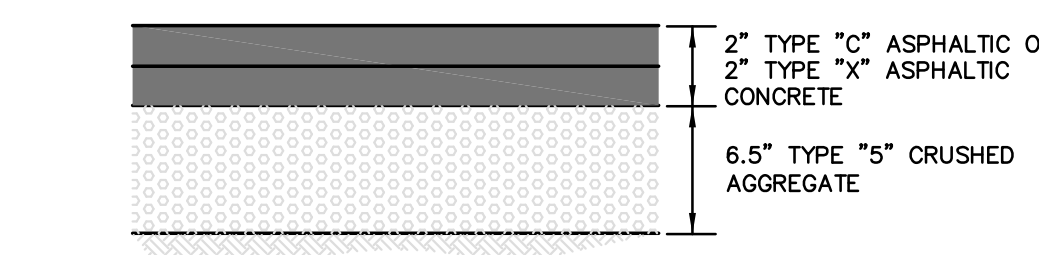
PIPE BOLLARD DETAIL
(n.t.s.)



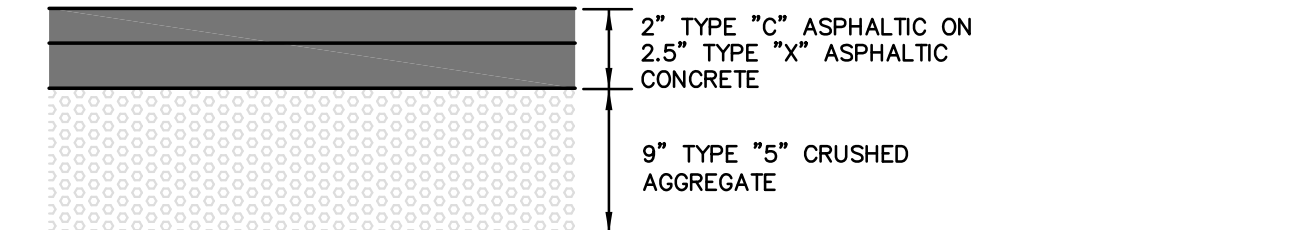
CONCRETE WALK
(n.t.s.)



TYPE "S" CURB & PAVEMENT DETAIL
(n.t.s.)



LIGHT DUTY - ASPHALT PAVEMENT DETAIL
(n.t.s.)

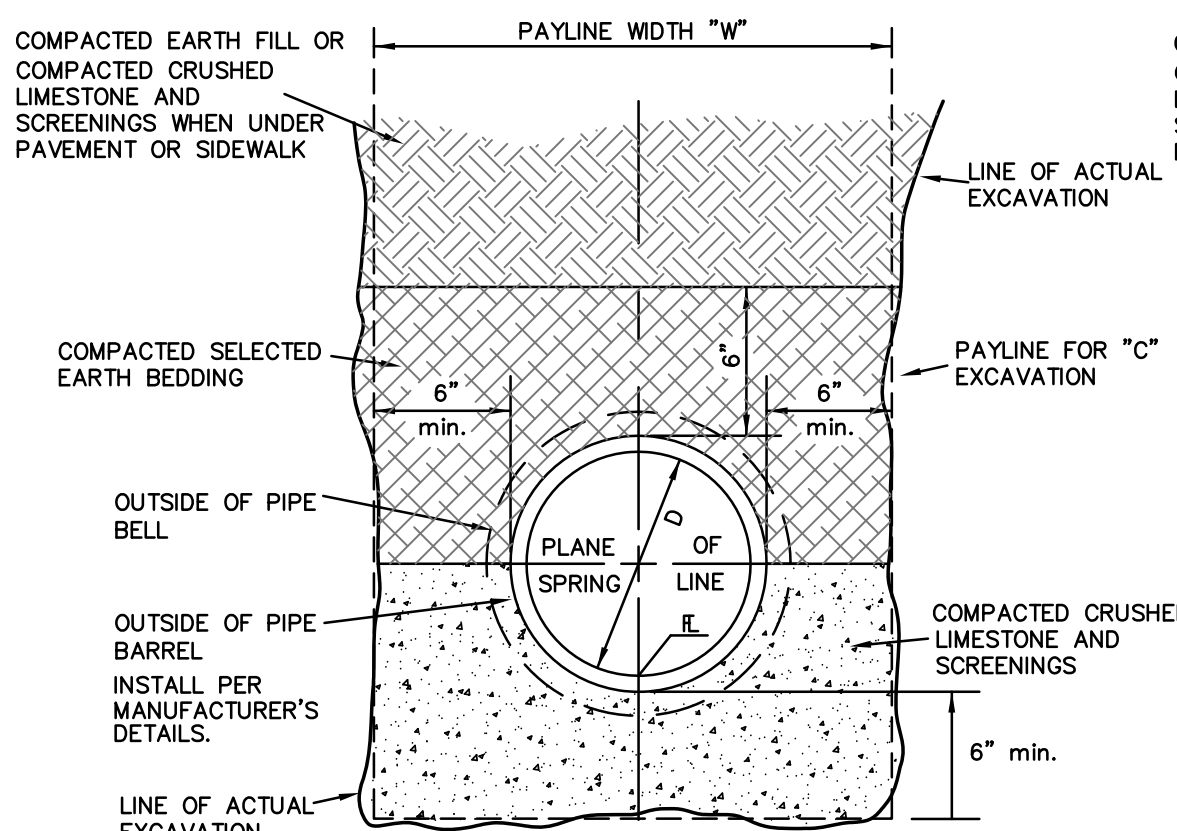


HEAVY DUTY - ASPHALT PAVEMENT DETAIL
(n.t.s.)

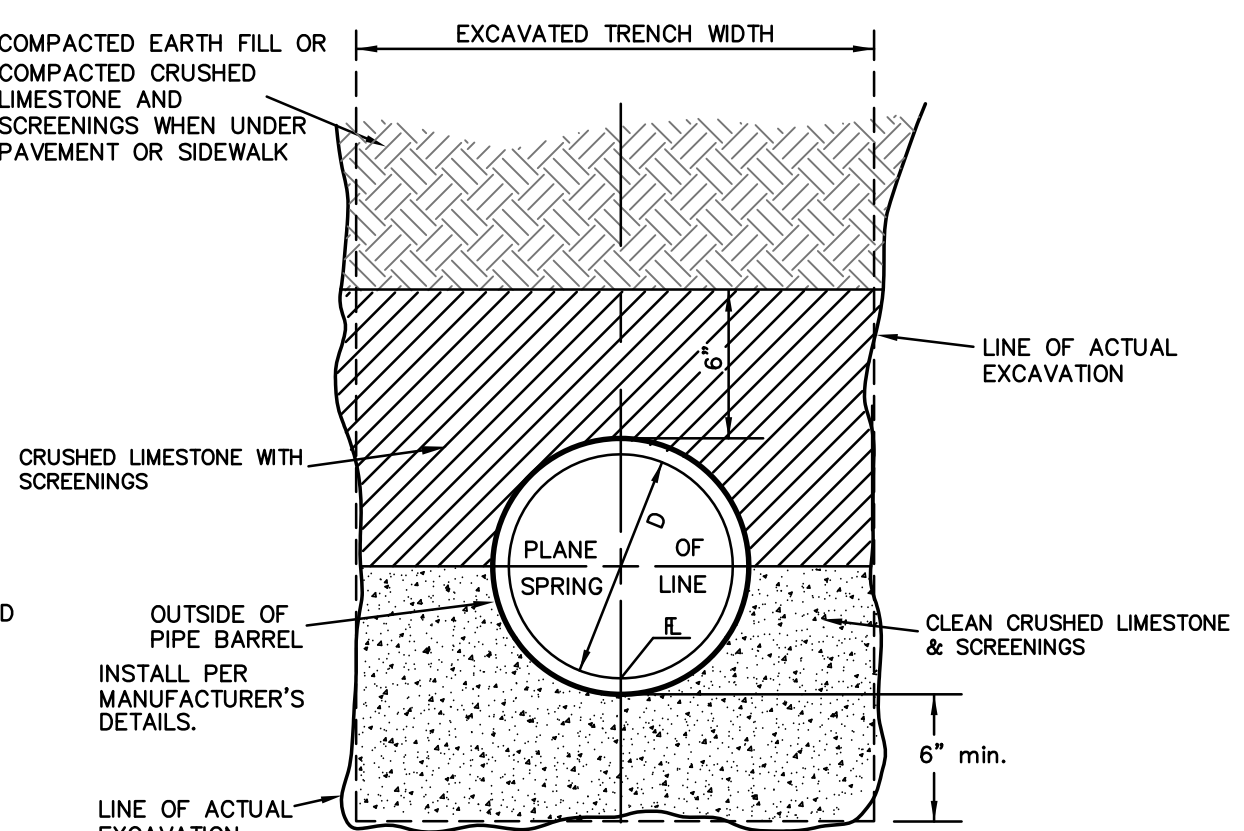


CONCRETE PAVEMENT DETAIL
(n.t.s.)

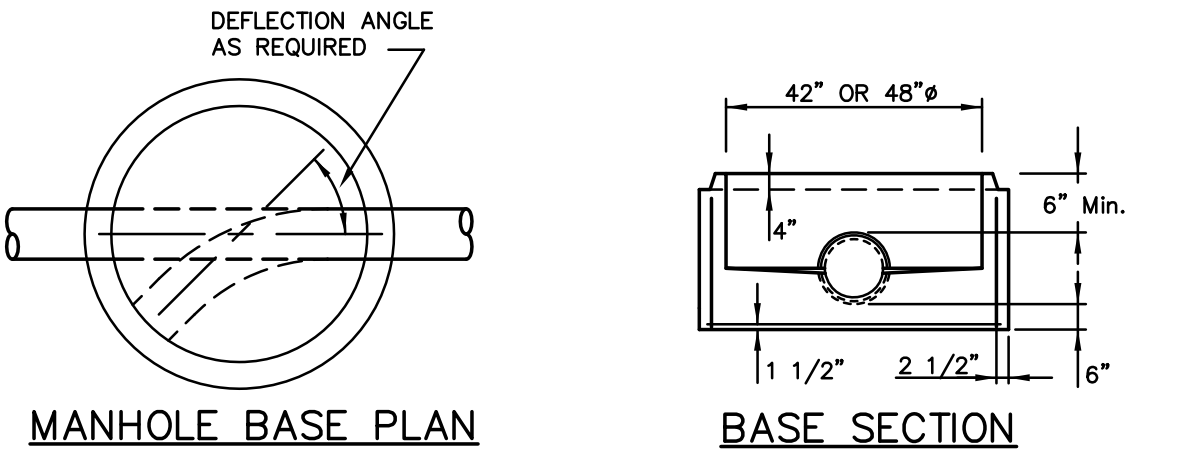
PAVEMENT NOTES:
1.) CONTRACTOR TO FOLLOW GEOTECHNICAL RECOMMENDATIONS AND ST. CHARLES COUNTY HIGHWAY DEPARTMENT CURRENT SPECIFICATIONS FOR QUALITY ASSURANCE AND MATERIALS FOR PAVEMENT CONSTRUCTION.
2.) ALL NON-REINFORCED CONCRETE SHALL BE 4,000 PSI AT 28 DAYS.
3.) ASPHALT SURFACE SHALL BE COMPACTED TO 98% MAXIMUM DENSITY.
4.) AGGREGATE BASE COURSE SHALL BE COMPACTED TO 95% MAXIMUM DENSITY.



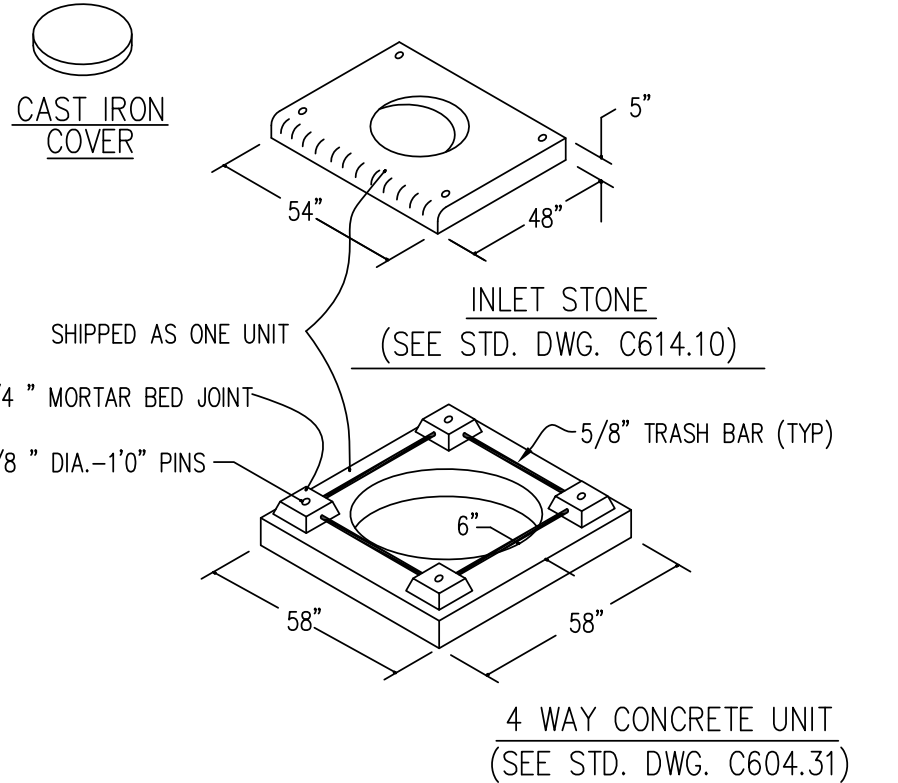
PIPE BEDDING
(MODIFIED FOR REINFORCED CONC. PIPE)



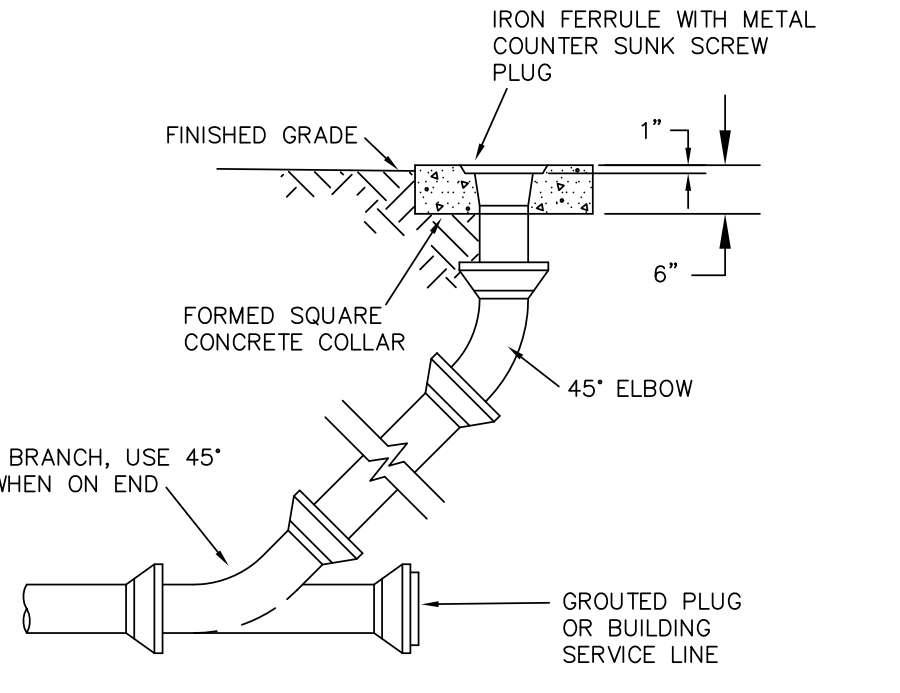
PIPE BEDDING
(FOR ALL PIPE EXCEPT REINFORCED CONC. PIPE)



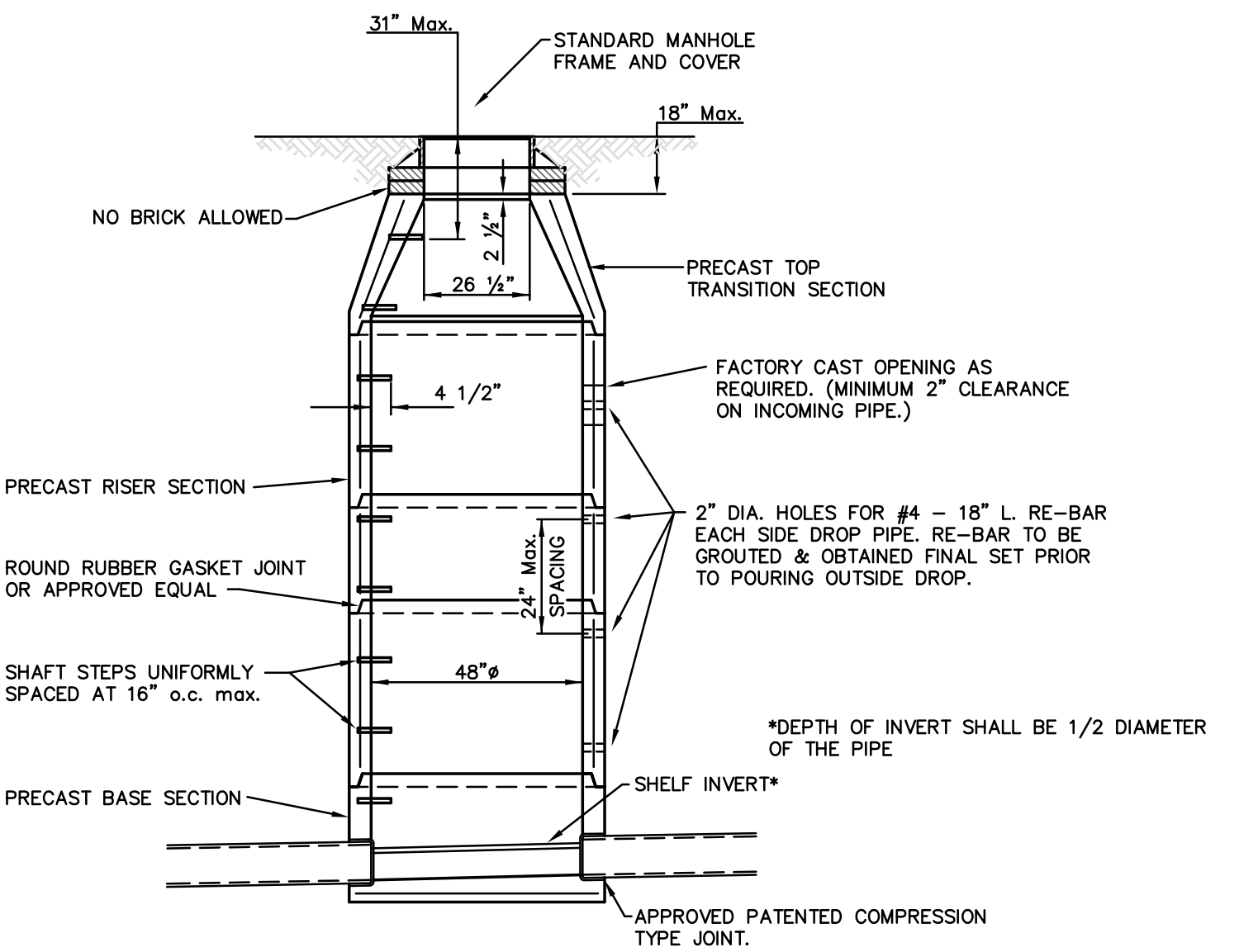
MANHOLE BASE PLAN
BASE SECTION



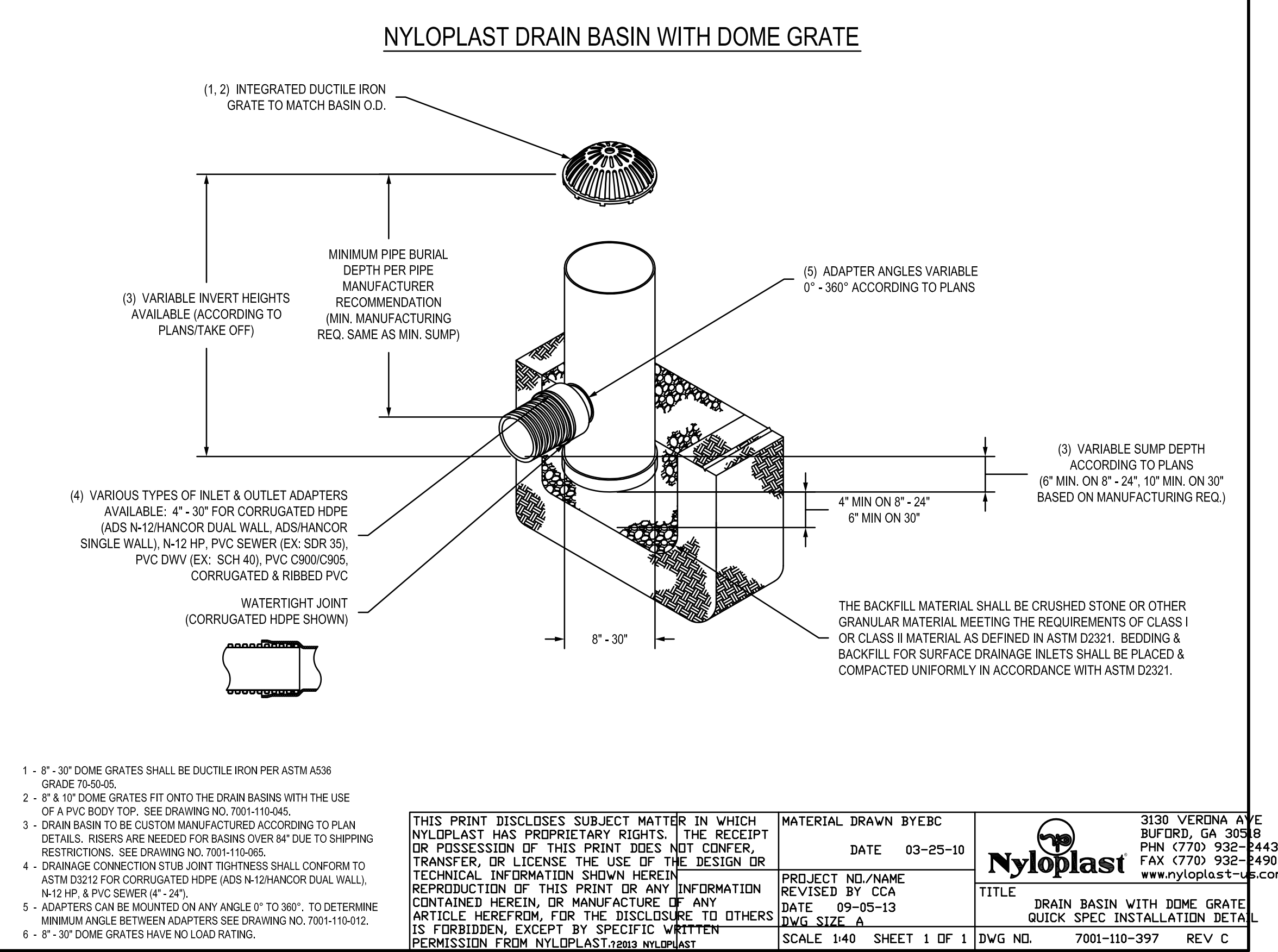
AREA INLET DETAIL
(n.t.s.)



CLEANOUT
(n.t.s.)



PRECAST MANHOLE
(n.t.s.)



THIS PRINT DISCLOSES SUBJECT MATTER IN WHICH NYLOPLAST HAS PROPRIETARY RIGHTS. THE RECEIPT OR POSSESSION OF THIS PRINT DOES NOT CONFER, TRANSFER, OR LICENSE THE USE OF THE DESIGN OR TECHNICAL INFORMATION SHOWN HEREIN. REPRODUCTION OF THIS PRINT OR ANY INFORMATION CONTAINED HEREIN, OR MANUFACTURE OF ANY ARTICLE HEREFROM, FOR THE DISCLOSURE TO OTHERS IS FORBIDDEN, EXCEPT BY SPECIFIC WRITTEN PERMISSION FROM NYLOPLAST.

MATERIAL DRAWN BY: EBC
DATE: 03-25-10

PROJECT NO./NAME: REVISED BY CCA
DATE: 09-05-13
DWG. SIZE: A

TITLE: DRAIN BASIN WITH DOME GRATE, QUICK SPEC INSTALLATION DETAIL

3130 VERDINA AVE
BURLINGAME, CA 94010
PHN (770) 932-8443
FAX (770) 932-8490
www.nyloplast-us.com

SCALE: 1/40 SHEET 1 OF 1
DWG. NO.: 7001-110-397
REV. C

PREPARED BY:
STOCK & ASSOCIATES
Consulting Engineers, Inc.

IMPROVEMENT PLANS FOR:
CENTENE DATA CENTER BUILDING EXPANSION
6430 WELDON SPRING ROAD
OFALLON, MISSOURI

12/30/2015
GEORGE M. STOCK
CIVIL ENGINEER
CERTIFICATE OF AUTHORITY
NUMBER: PE-25116
E-25116

REVISIONS:
1. 2015-12-07 PROGRESS PRINT
2. 2015-12-09 REVISED PER CITY COMMENTS
3. 2015-12-30 REVISED PER CITY & CLIENT COMMENTS

DRAWN BY: J.M.B.
CHECKED BY: G.M.S.
DATE: 11/10/2015
JOB NO: 209-4511.8
DUCKETT CREEK # BASE MAP #
S.C.C. HAT # H&T S.U.P. #
M.D.N.R. #
MO-RA07437

SHEET TITLE:
CONSTRUCTION DETAILS
SHEET NO.: **C6.0**