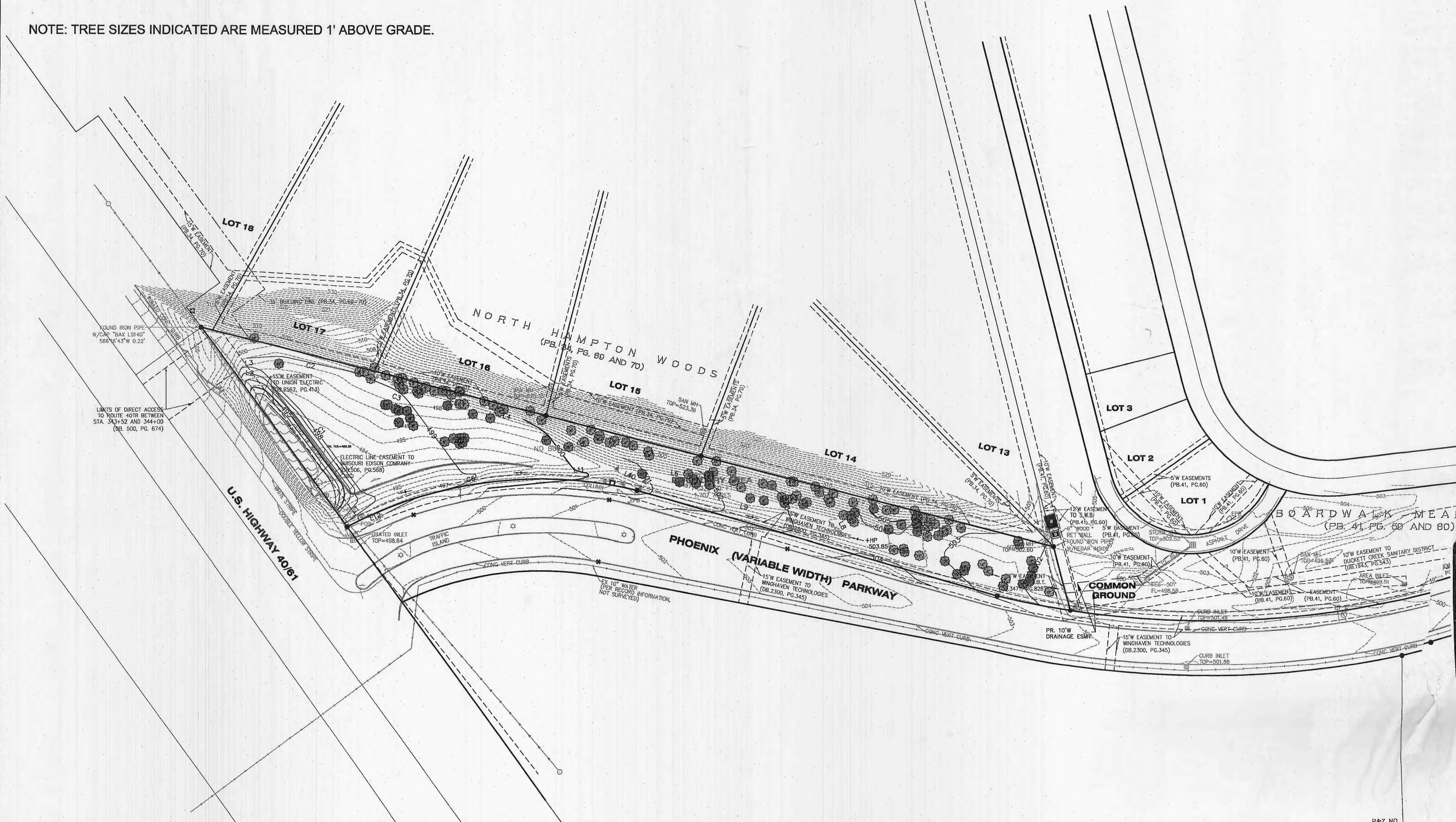



- EXISTING TREE CALCULATIONS:
 .27 ACRES OF EXISTING TREE MASS
 .27 x 20% = .05 ACRES TO REMAIN
- EXISTING TREE MASS TO BE REMOVED
 .09 ACRES
- EXISTING TREE MASS TO REMAIN
 .18 ACRES

-  EXISTING TREES TO REMAIN
-  EXISTING TREES TO BE REMOVED

NOTE: TREE SIZES INDICATED ARE MEASURED 1' ABOVE GRADE.



REVISIONS DATE: 12/7/05 DESK: CITY OF FALLON COMMENTS	
DEVELOPER/OWNER: McEAGLE PROPERTIES, L.L.C. 1007 BOARDWALK SPRINGS PLACE OF FALLON, MO. 63366 (636) 967-9300	
THE PROFESSIONAL WHOSE SIGNATURE AND PERSONAL SEAL APPEAR HEREON (OR SIGNATURE AND PERSONAL SEAL APPEAR ON THIS PAGE, AND DISCLAIMS LIABILITY FOR ANY ERRORS OR OMISSIONS IN THIS PLAN, SPECIFICATIONS, ESTIMATES, REPORTS, OR OTHER DOCUMENTS OR INSTRUMENTS NOT BEING A PART OF THIS PLAN, TO THE EXTENT OF THE PROFESSIONAL'S LIABILITY TO THE PUBLIC, TO WHICHEVER PARTY THESE REVERS	
SEAL: 	
CENTPEDE-WINGHAVEN TECHNOLOGY DRIVE AND PHOENIX PARKWAY OF FALLON, MO 63366	
TREE SURVEY	
planning • engineering • survey • landscape architecture Cole and ASSO INCORPORATES INCORPORATES 10777 sunset office dr suite 1 saint louis • missouri 63127 p: 314.984.8867 f: 314.984.056	
DESIGNED BY JF	DRAWN BY RTH
CHECKED BY JTR	DATE 1/12/07
Job Number 05-109	Sheet Number T1.0

DATE: May 24, 2007 - 8:50pm
 DRAWING: S:\055\055-109\LD5-109\LD5-109.dwg _TREE_SURVEY.dwg