

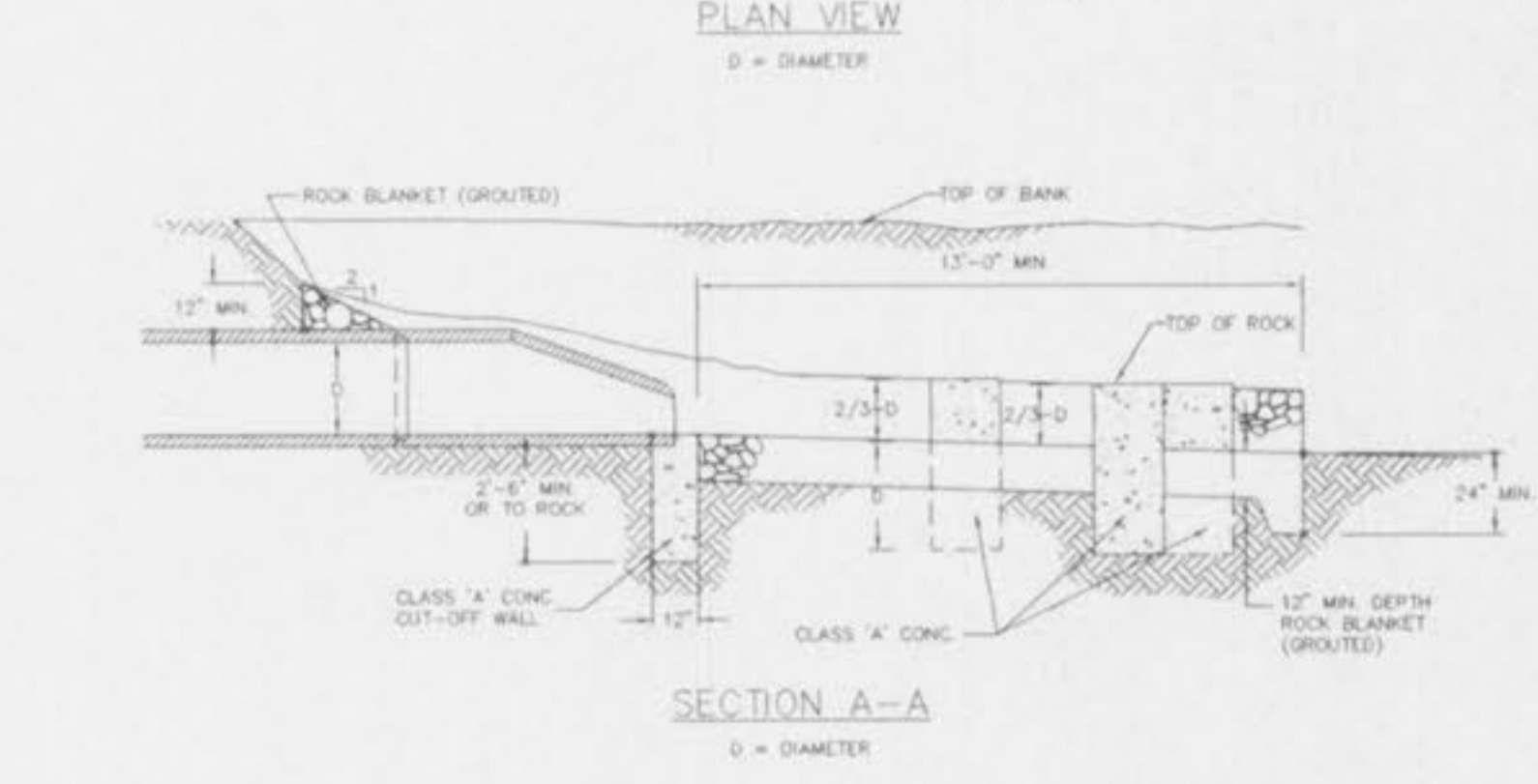
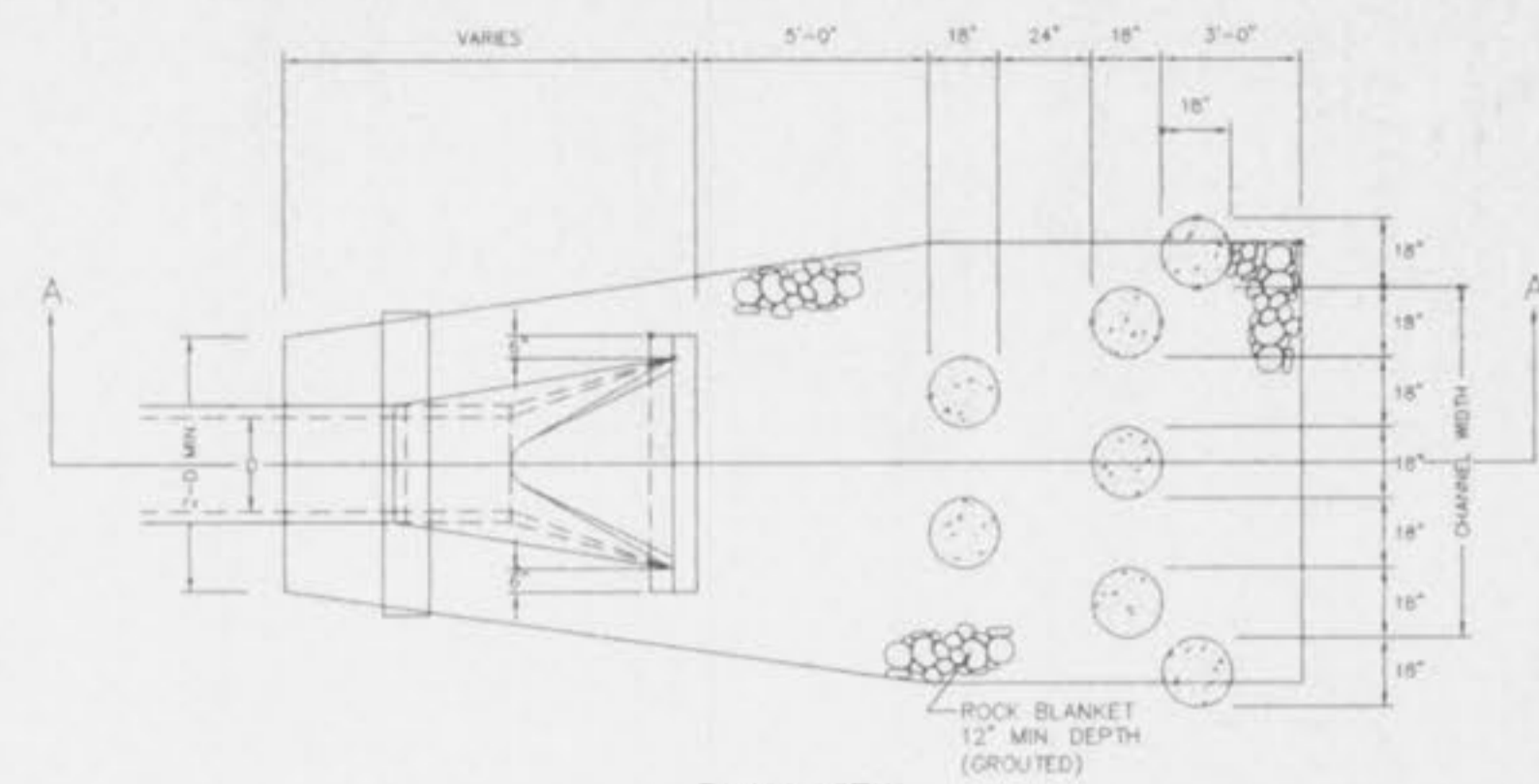
STORM SEWER HYDRAULICS

THE STERLING COMPANY

Job Name: CHADWICK
 Prepared by: DME
 Job No: 9508193
 Checked by: [Blank]
 Sheet No: 1

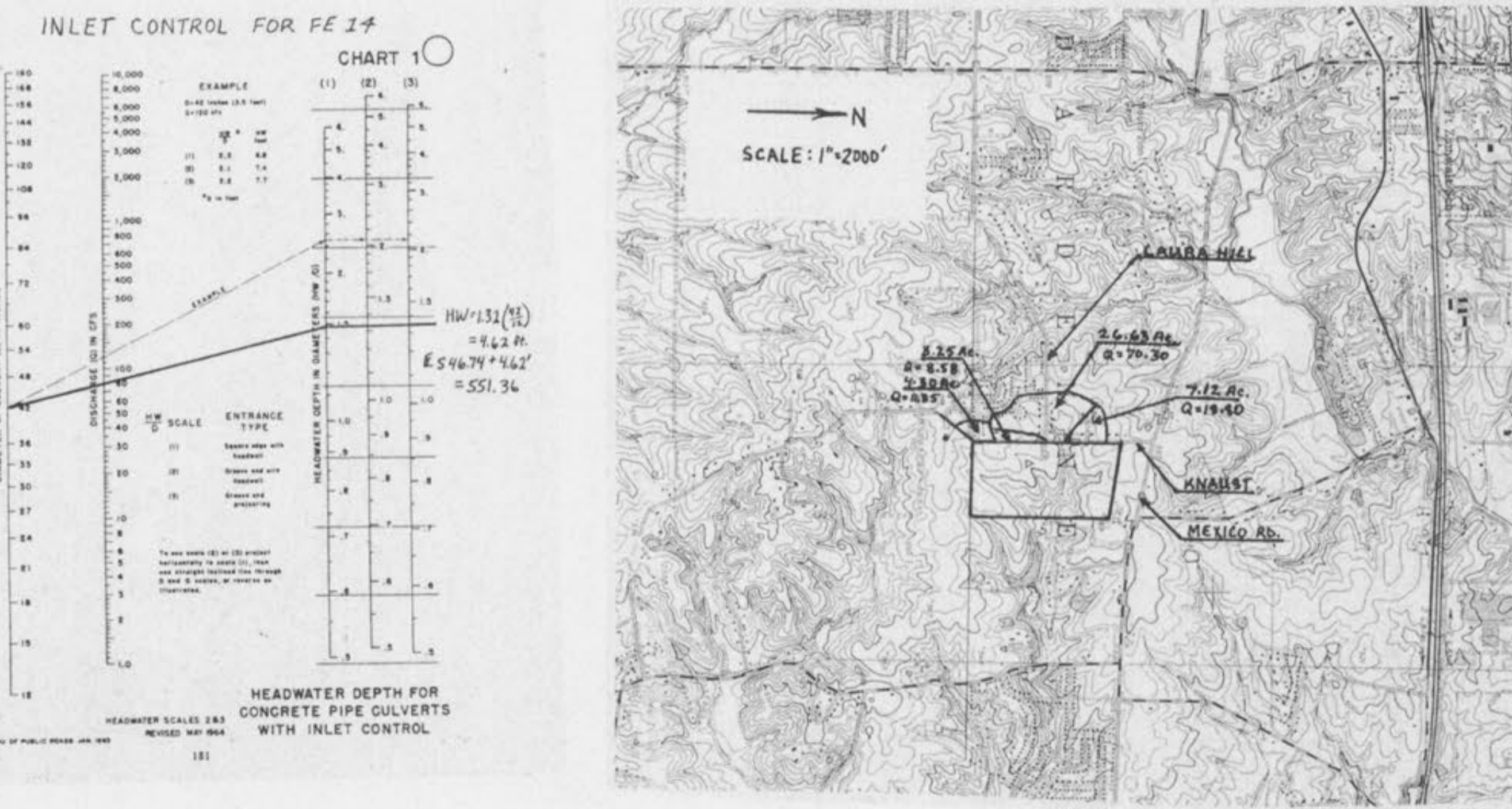
Date: 09/24/96
 Revised: 09/24/96

Upper Str. Type	Lower Str. Type	Upper Number	Lower Number	Len. Ft.	Area In. ac	P.I.	Q C.F.S.	Total Q C.F.S.	Pipe Const. Size In.	V. Grade	V. In. Ft.	D x Vn	Hyd. Grade	Flow Line Elevation Upper	Top of Structure Elevation Upper	Hydraulic Free Board Upper	Frict. Loss (C.F.)	Curve Loss	Junc. Loss	Entr. Loss	Turn Angle	Turn Loss	Capacity C.F.S.	Q/Cap.	Normal Depth Ft.			
T		67	63	67.71		11.01	11.01	18	1.932	6.23	0.60	6.64	1.102	552.00	550.69	557.04	557.04	3.80	553.24	552.50	0.74	0.60	5	0.20	14.61	0.75	0.96	
T		68	64	62.86		1.85	1.85	15	1.112	1.51	0.44	0.07	0.988	552.00	551.30	557.50	557.04	4.49	553.01	552.96	0.05	0.04	85	0.04	6.82	0.27	0.44	
T		69	65	62.97		1.53	1.53	15	1.002	1.25	0.02	0.04	0.962	553.08	552.00	560.21	559.50	6.72	553.49	553.25	0.06	0.07	0.02	55	0.01	6.47	0.24	0.41
AI		65	64	50.19		1.60	2.57	15	1.002	0.06	0.07	0.17	0.153	551.80	551.30	559.50	557.04	6.25	553.04	552.56	0.08	0.27	25	0.04	6.45	0.39	0.54	
AI		64	63	34.5		2.33	6.31	18	1.192	3.91	0.24	1.64	0.432	551.10	550.69	557.04	557.04	4.08	552.55	552.30	0.15	0.25	40	0.04	11.45	0.60	0.83	
CI		63	63	226		0.69	18.61	30	1.892	3.79	0.22	4.15	0.212	550.49	546.22	557.04	560.50	4.54	552.30	551.83	0.47	0.35	40	0.04	56.38	0.33	0.98	



Flared End Section with Energy Dissipator

OFFSITE DRAINAGE AREA MAP



NOTE: AI=Area Inlet, MI=Manhole, T=Tangent Structure, CI=Curb Inlet, DCI=Double Curb Inlet, SCI=Skewed Curb Inlet, TP=Tangent Point, EP=End of Pipe, DS=Outfall Structure
 n=0.013 For RCP, 0.024 For CMP For Drainage Areas, P.I. & Bypass, See Drainage Area Map.

ISSUE REMARKS/DATE

1	8/12/96	
2	8/23/96	
3	9/4/96	
4	9/25/96	

PREPARED FOR: **J.H.B. PROPERTIES, INC.**
 600 NEW BALMARTIN ROAD
 ST. LOUIS, MISSOURI 63129
 PHONE: (314) 487-6717

CONFIDENTIAL PROPRIETARY MATERIAL
 The use, reproduction, and sales rights of this drawing are reserved by The Sterling Company. Copyright 1996.

SIGNED: **WILLIAM CHARLES HAWK, PROFESSIONAL ENGINEER #19628**

DRAWN: [Blank] DESIGNED: [Blank] CHECKED: [Blank]

PROJECT: OFFSITE DRAINAGE - HYDRAULICS

SHEET TITLE: OFFSITE DRAINAGE - HYDRAULICS

NO. 95 08 193
 M.S.D. SHEET 28 OF 31