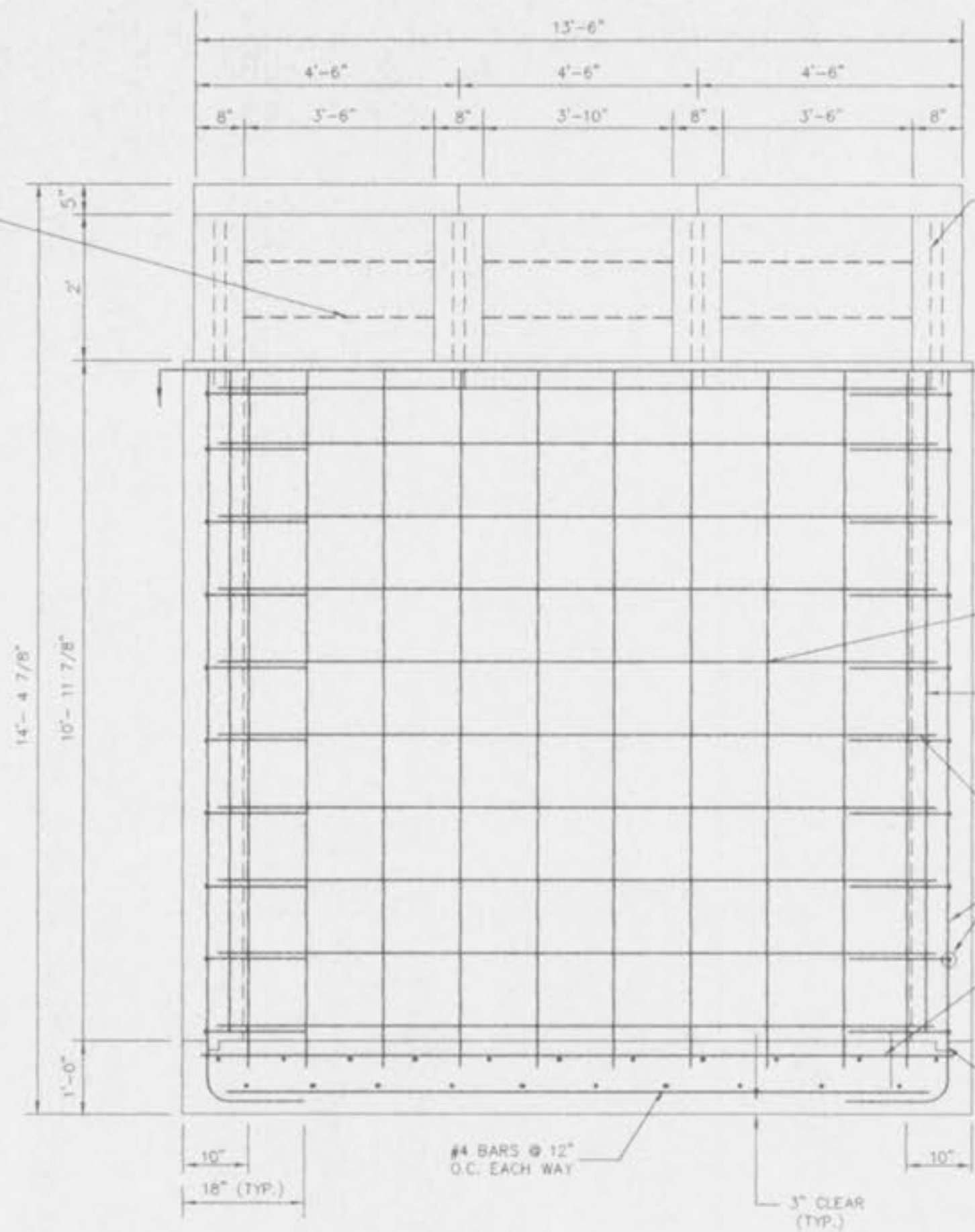
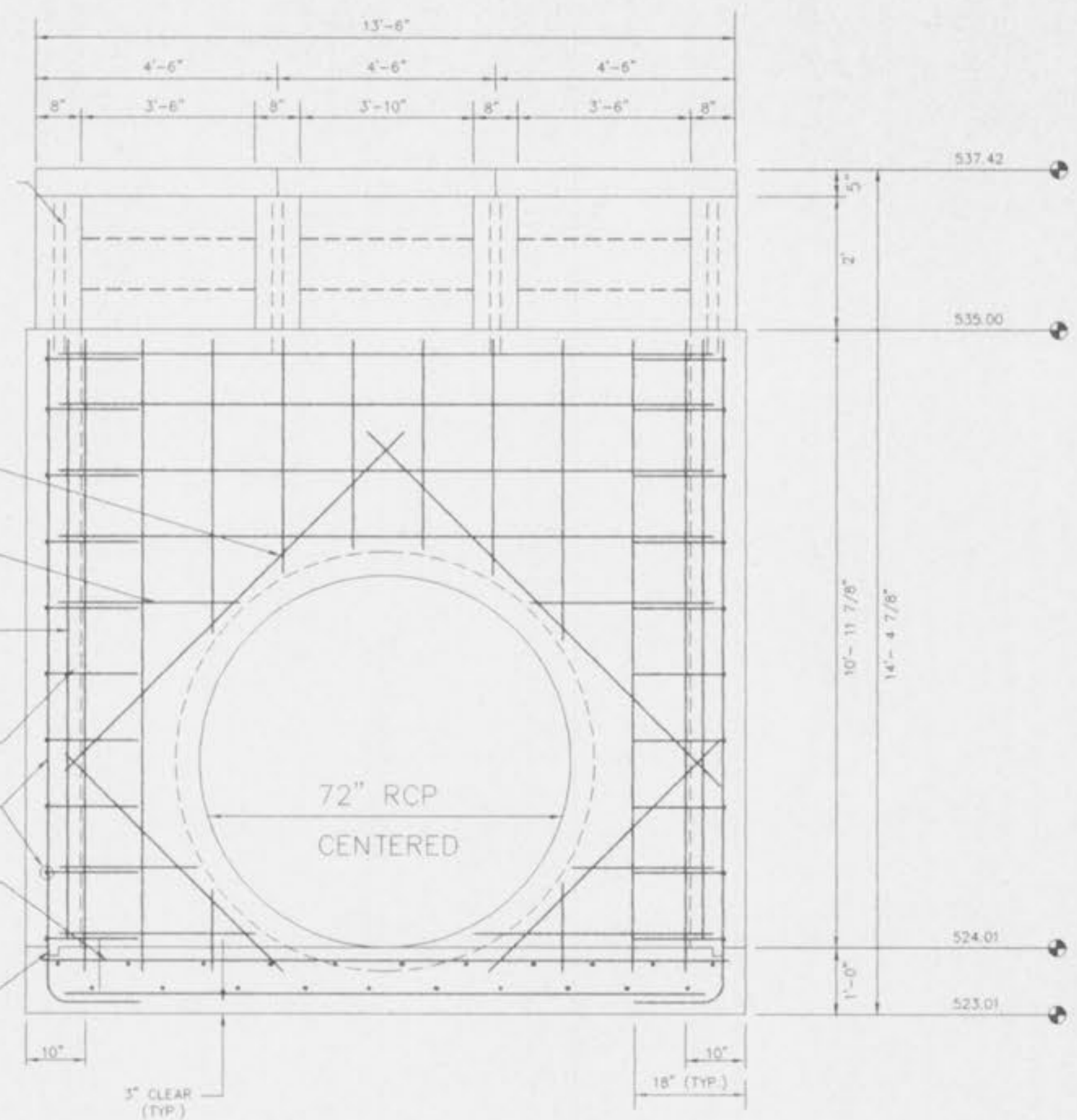


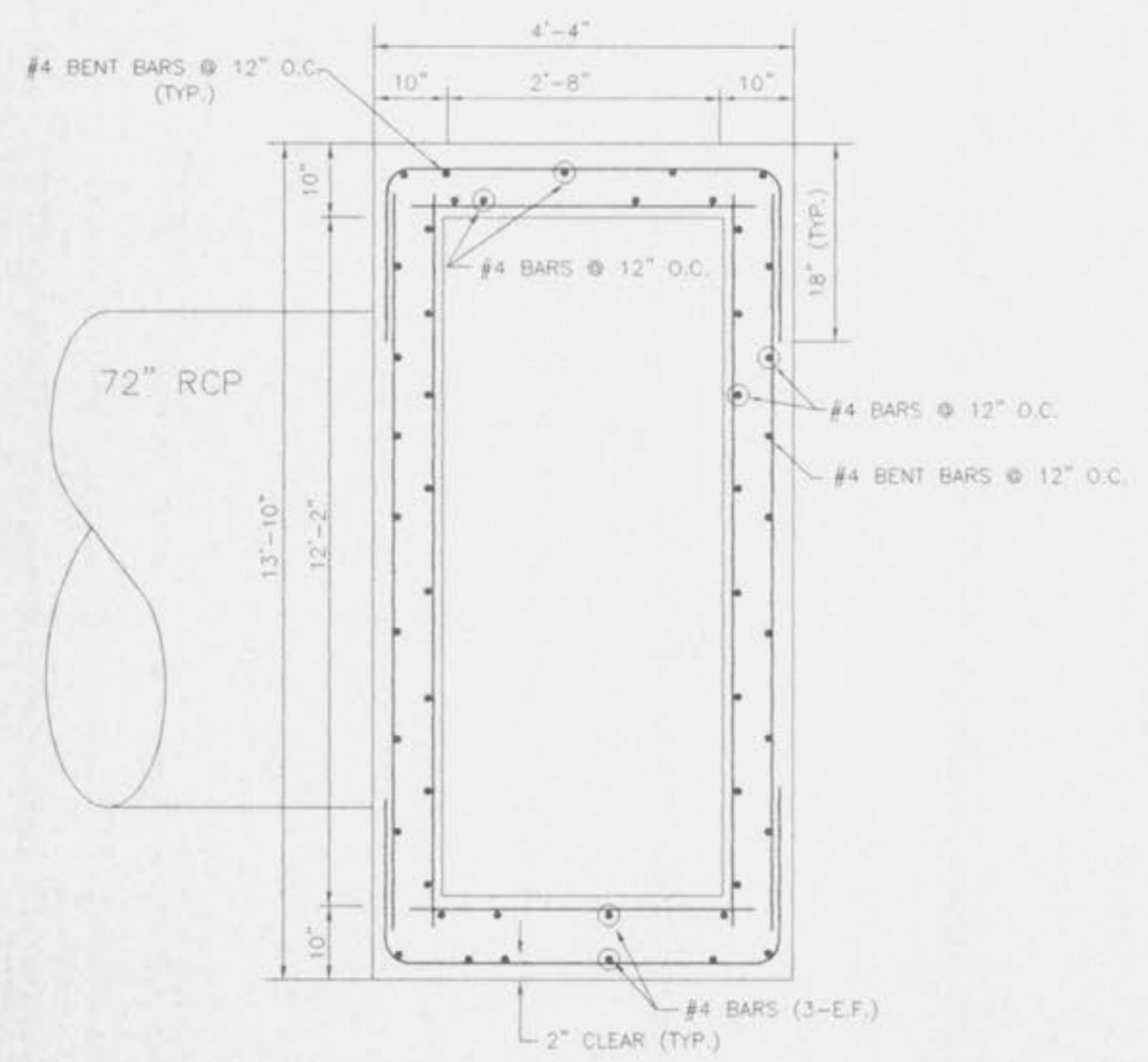
OUTFALL STRUCTURE (111)
SIDE VIEW
(OUTSIDE FACE STEEL SHOWN)
(NOT TO SCALE)



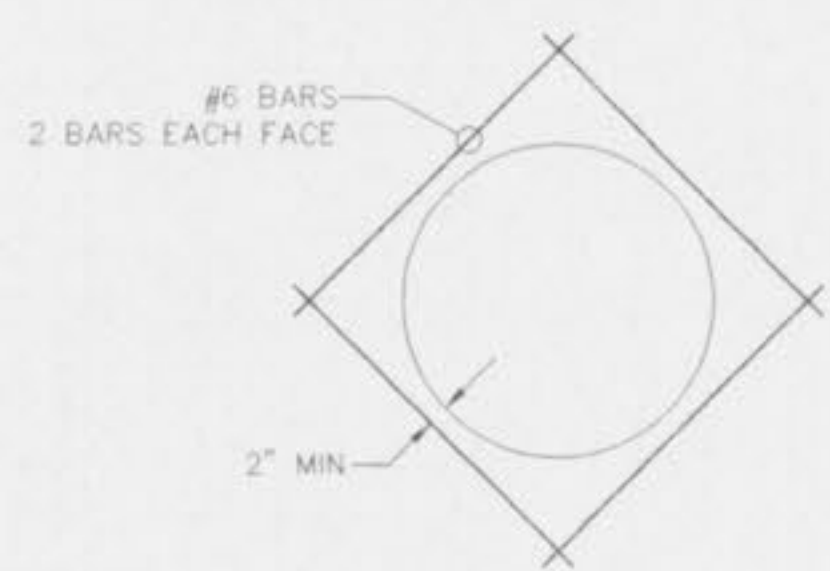
OUTFALL STRUCTURE (111)
FRONT ELEVATION
(OUTSIDE FACE STEEL SHOWN)
(NOT TO SCALE)



OUTFALL STRUCTURE (111)
REAR ELEVATION
(OUTSIDE FACE STEEL SHOWN)
(NOT TO SCALE)



SECTION A-A
(NOT TO SCALE)



DETAIL SHOWING REINFORCING
AROUND OPENINGS

CONSTRUCTION NOTES:

- Concrete for the structure shall be "air entrained" and contain at least 6 sack Class "A" Portland Cement per cubic yard. The concrete shall be placed at a slump of 4 inches \pm 1/2 inch. The concrete shall be proportioned and transported in accordance with ASTM C-94.
- Reinforcing steel shall conform to ASTM C-615-60 with deformations conforming to ASTM A-305 and shall have a minimum cover of 2 inches except for 3 inches where concrete is poured against earth.
- Laps and/or splices in reinforcing steel shall be a minimum of 30 bar diameters.
- Keyed joints shown are to be 2-inch by 2-inch keyed construction joints.
- $P_s = 24,000$ psi.
- $P_c = 3,750$ psi.
- All exposed edges to have a 3/4-inch Chamfer.
- Contractor to provide for bypass of stormwater during construction of structure, by means of an interim ditch.
- Soil density tests shall be obtained by the soils engineer at selected intervals to insure compliance with soils specifications.
- All soil specifications shall be directed by soils engineer.
- Note: Dry detention basins are to be sodded.

ISSUE	REMARKS	DATE
1		8/12/96
2		8/25/96
3		9/2/96
4		9/25/96

PREPARED FOR:
J.H.B. PROPERTIES, INC.
5091 NEW BAUMGARTNER ROAD
ST. LOUIS, MO 63129
PHONE: (314) 487-6717

SIGNED:
WILLIAM CHARLES HAWN, PROFESSIONAL ENGINEER #19628



PREPARED BY:
5055 NEW BAUMGARTNER ROAD
ST. LOUIS, MISSOURI 63129
STERLING
ENGINEERS, SURVEYORS AND PLANNERS
(314) 487-0440, FAX 487-8944

CONFIDENTIAL PROPRIETARY MATERIAL
The use, reproduction, and sales rights of this drawing are reserved by the Sterling Company. Copyright 1996.

PROJECT: CHADWYCK
SHEET TITLE: OUTFALL STRUCTURE DETAILS

DRAWN: DESIGNED: CHECKED:

NO.	95	08	193
M.S.D.	SHEET		
P#	29		
DIGITAL FILE LOCATION	REVISED BY		31
DATE	BY		