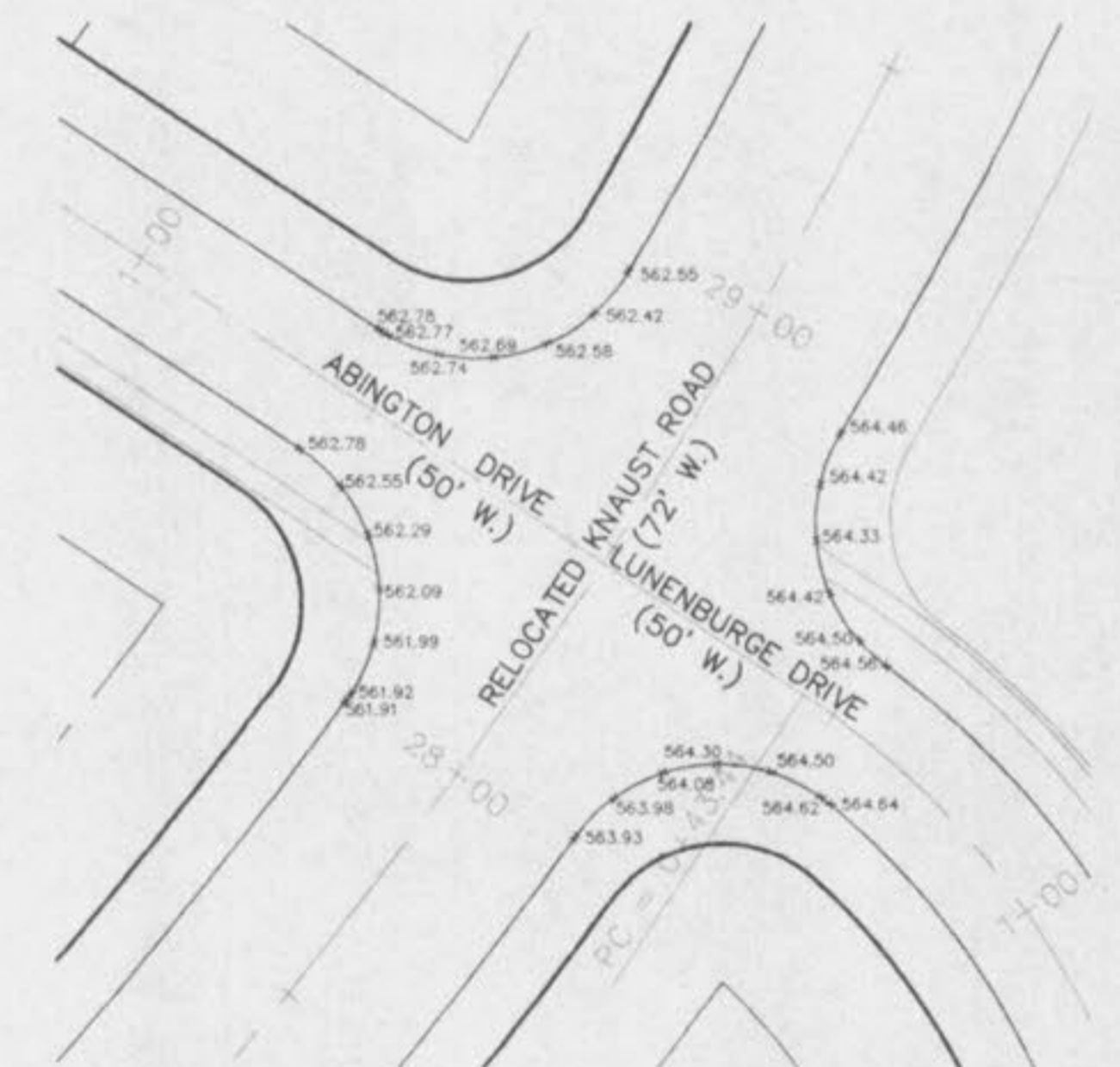
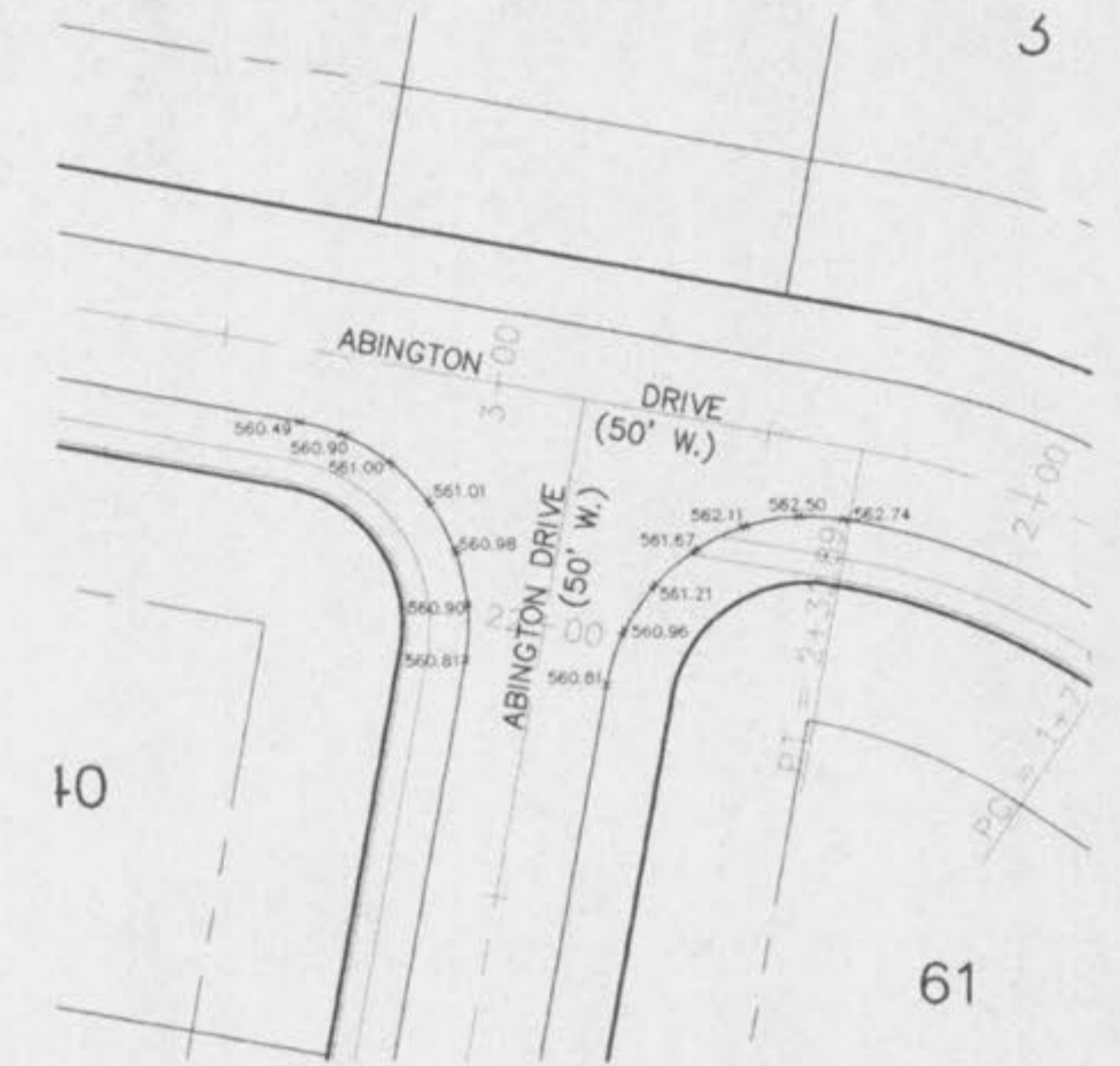


WARPING DETAILS:

SCALE: 1" = 30'



NOTE: ALL WARPING ELEVATIONS ARE GUTTER ELEVATIONS AND NOT BACK OF CURB.

ISSUE	REMARKS/DATE
1	18/12/96
2	18/23/96
3	19/4/96
4	9/25/96
5	10/8/96

PREPARED FOR:
J.H.B. PROPERTIES INC.
 5001 NEW BALMIGARTNER ROAD
 WILLOW BUSH, MISSOURI 63129
 PHONE: (314) 487-8944
 CONFIDENTIAL PROPRIETARY MATERIAL
 The use, reproduction, and sales rights of this drawing are reserved by The Sterling Company, Copyright, 1996.
 SIGNED:
 WILLIAM CHARLES HAWN, PROFESSIONAL ENGINEER #19628



CORPORATE OFFICE
 PREPARED BY: 5055 NEW BALMIGARTNER ROAD
 ST. LOUIS, MO. 63129
 (314) 487-0440 FAX (314) 487-8944
STERLING
 ENGINEERS, SURVEYORS AND PLANNERS C.O.
 ILLINOIS OFFICE
 266 SOUTHWOOD CENTER, COLUMBIA, IL. 62236
 (618) 281-3500 FAX (618) 281-3802

DRAWN:	DESIGNED:	CHECKED:

PROJECT: **CHADWYCK**
 SHEET TITLE: **WARPING DETAILS**

NO.	95 08 193
M.S.D.	SHEET
P#	17
DIGITAL FILE LOCATION	31