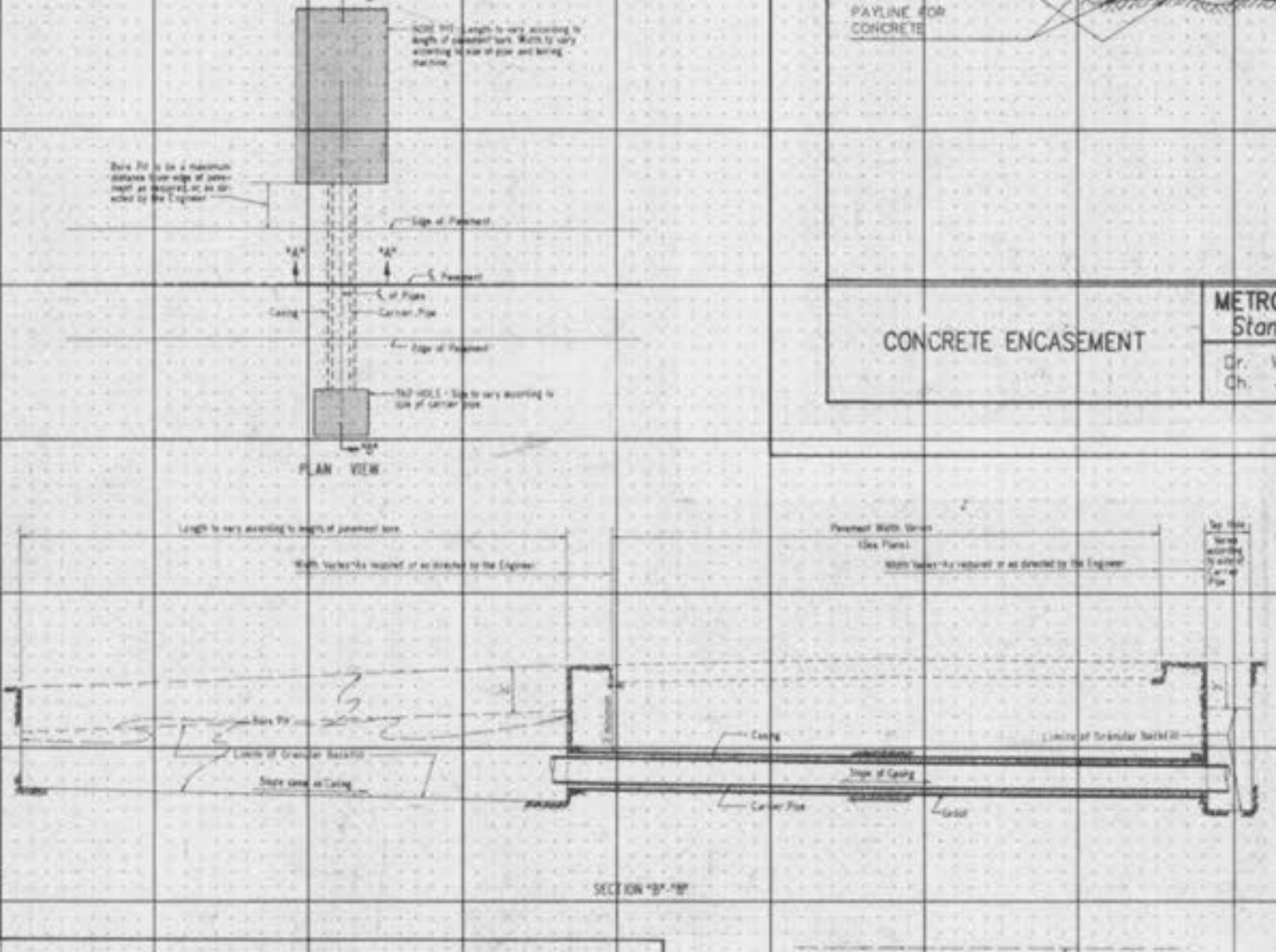


**CONCRETE ENCASEMENT**  
 METROPOLITAN ST. LOUIS SEWER DISTRICT  
 Standard Details of Sewer Construction  
 W.S.H. 1992  
 J.C.K. SHEET 5



- GENERAL NOTES**
1. This plan shows the location of the sewer line and the location of the manholes. It is to be used in conjunction with the sewer construction details.
  2. The sewer line shall be installed in accordance with the sewer construction details.
  3. The manholes shall be installed in accordance with the sewer construction details.
  4. The sewer line shall be installed in accordance with the sewer construction details.
  5. The manholes shall be installed in accordance with the sewer construction details.
  6. The sewer line shall be installed in accordance with the sewer construction details.
  7. The manholes shall be installed in accordance with the sewer construction details.
  8. The sewer line shall be installed in accordance with the sewer construction details.
  9. The manholes shall be installed in accordance with the sewer construction details.
  10. The sewer line shall be installed in accordance with the sewer construction details.
  11. The manholes shall be installed in accordance with the sewer construction details.
  12. The sewer line shall be installed in accordance with the sewer construction details.
  13. The manholes shall be installed in accordance with the sewer construction details.
  14. The sewer line shall be installed in accordance with the sewer construction details.
  15. The manholes shall be installed in accordance with the sewer construction details.



William Charles Hawn E-19628