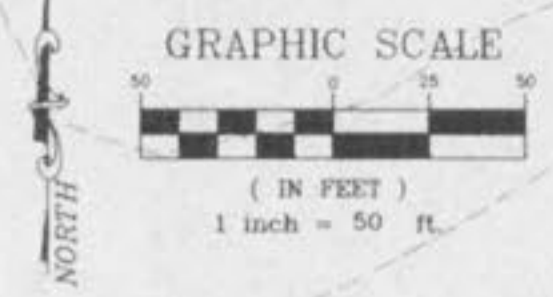
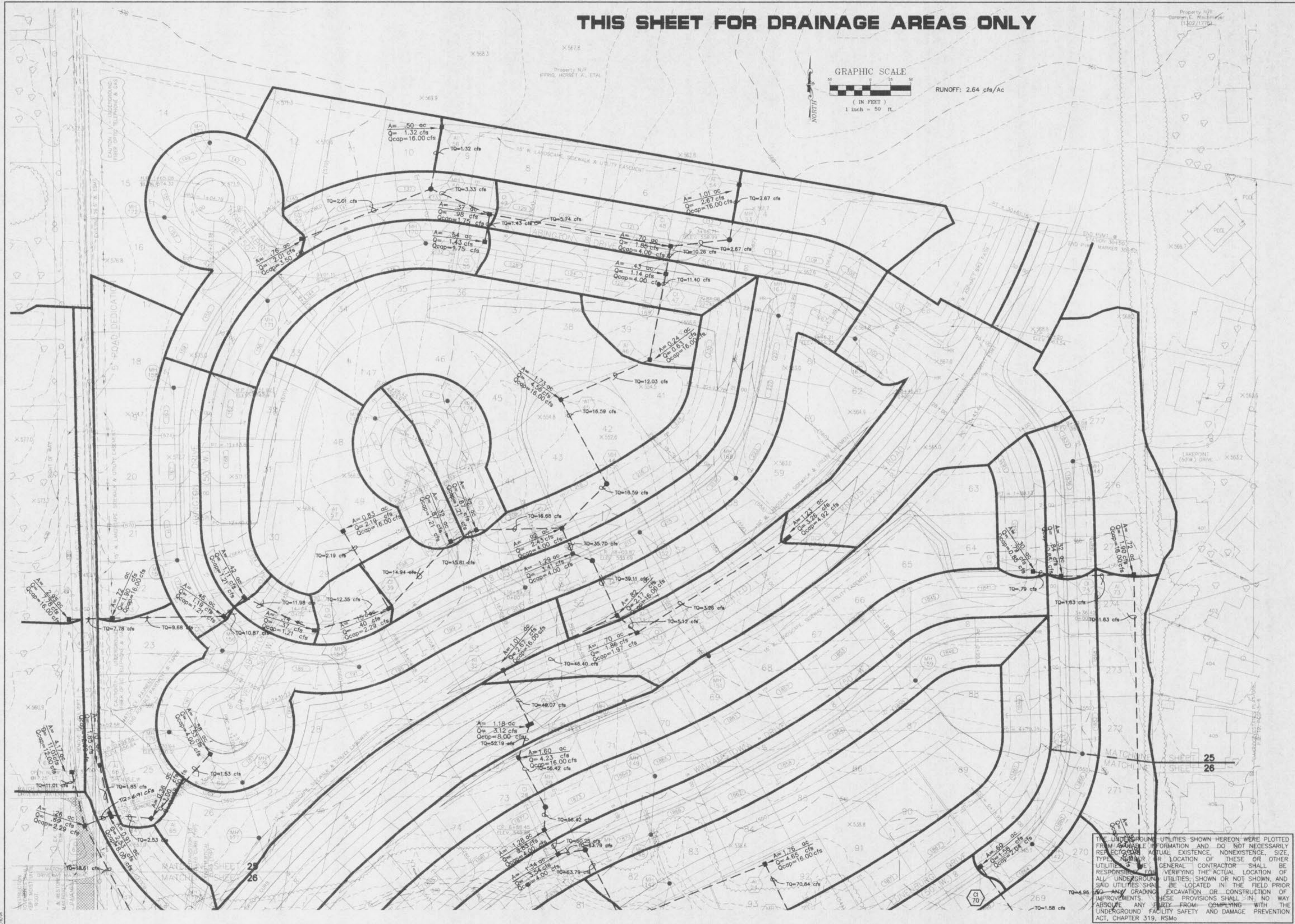


THIS SHEET FOR DRAINAGE AREAS ONLY



RUNOFF: 2.64 cfs/Ac



THE UNDERGROUND UTILITIES SHOWN HEREON WERE PLOTTED FROM AVAILABLE INFORMATION AND DO NOT NECESSARILY REFLECT THEIR ACTUAL EXISTENCE, NONEXISTENCE, SIZE, TYPE, DEPTH OR LOCATION OF THESE OR OTHER UTILITIES. THE GENERAL CONTRACTOR SHALL BE RESPONSIBLE FOR VERIFYING THE ACTUAL LOCATION OF ALL UNDERGROUND UTILITIES, SHOWN OR NOT SHOWN, AND SAID UTILITIES SHALL BE LOCATED IN THE FIELD PRIOR TO ANY GRADING, EXCAVATION OR CONSTRUCTION OF IMPROVEMENTS. THESE PROVISIONS SHALL IN NO WAY ABSOLVE ANY PARTY FROM COMPLYING WITH THE UNDERGROUND FACILITY SAFETY AND DAMAGE PREVENTION ACT, CHAPTER 319, RSMo.

ISSUE	REMARKS/DATE
1	8/12/96
2	9/23/96
3	9/14/96
4	9/25/96
5	10/7/96
	11/26/96

PREPARED FOR:
J.H.B. PROPERTIES INC.
 509 NEW BALMARTINER ROAD
 ST. LOUIS, MISSOURI 63129
 PHONE: (314) 487-8717
 CONFIDENTIAL, PROPRIETARY MATERIAL
 The use, reproduction, and sales rights of this drawing are reserved by the Sterling Company. Copyright 1996.
 SIGNED: _____
 WILLIAM CHARLES HAWN, PROFESSIONAL ENGINEER #19525



CORPORATE OFFICE:
 PREPARED BY: 5055 NEW BALMARTINER ROAD
 ST. LOUIS, MO. 63129
 (314) 487-0440 FAX (314) 487-8844
STERLING
 ENGINEERS, SURVEYORS AND PLANNERS CO.
 ILLINOIS OFFICE:
 266 SOUTHWOOD CENTER, COLUMBIA, IL. 62236
 (615) 281-3800 FAX (615) 281-3802

PROJECT:	CHADWYCK
DRAWN:	
DESIGNED:	
CHECKED:	7%
SHEET TITLE:	DRAINAGE AREA MAP
NO.:	95 08 193
M.S.D.:	
P#:	25
DIGITAL FILE LOCATION:	
DATE:	
OF:	31