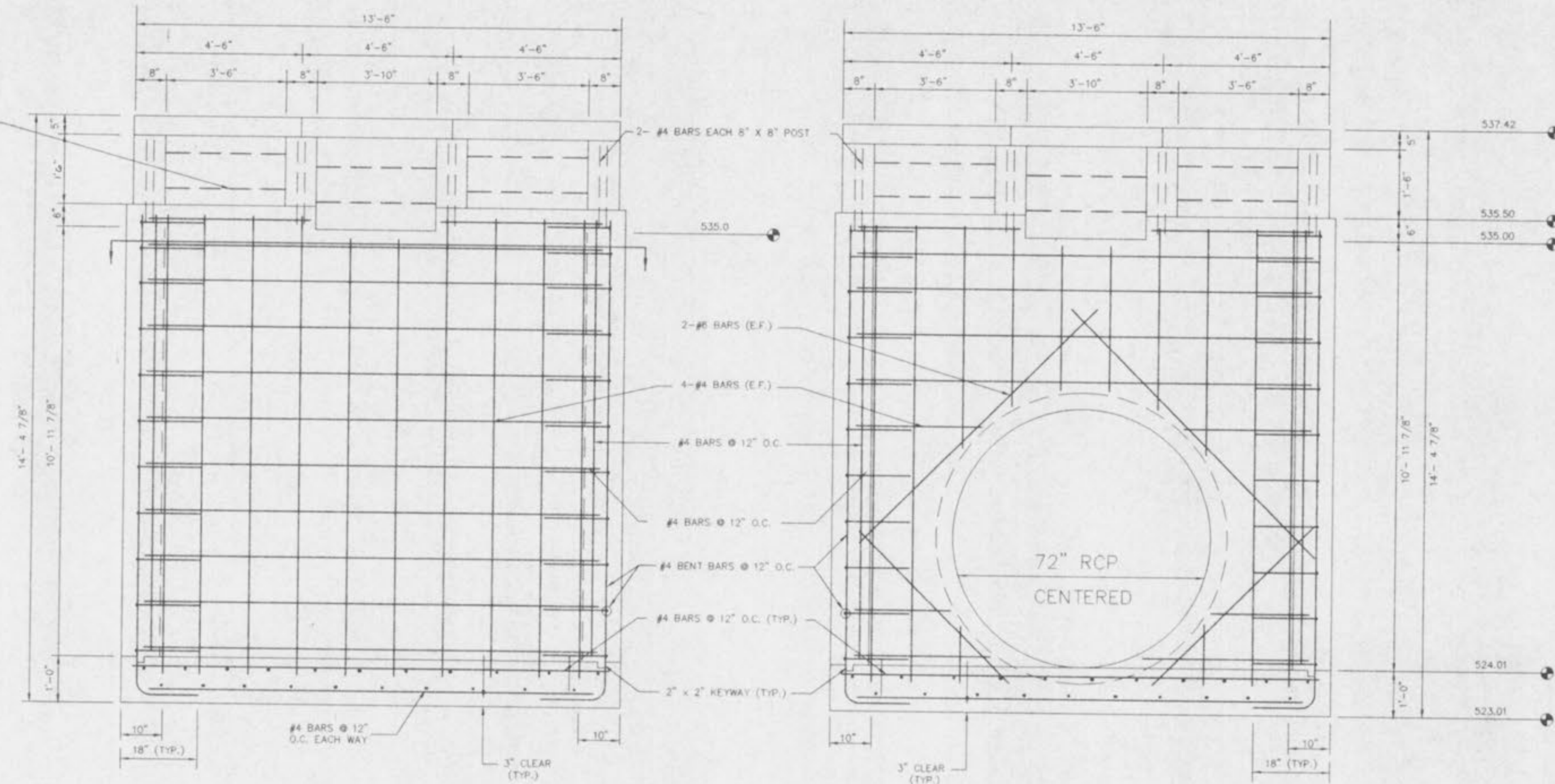
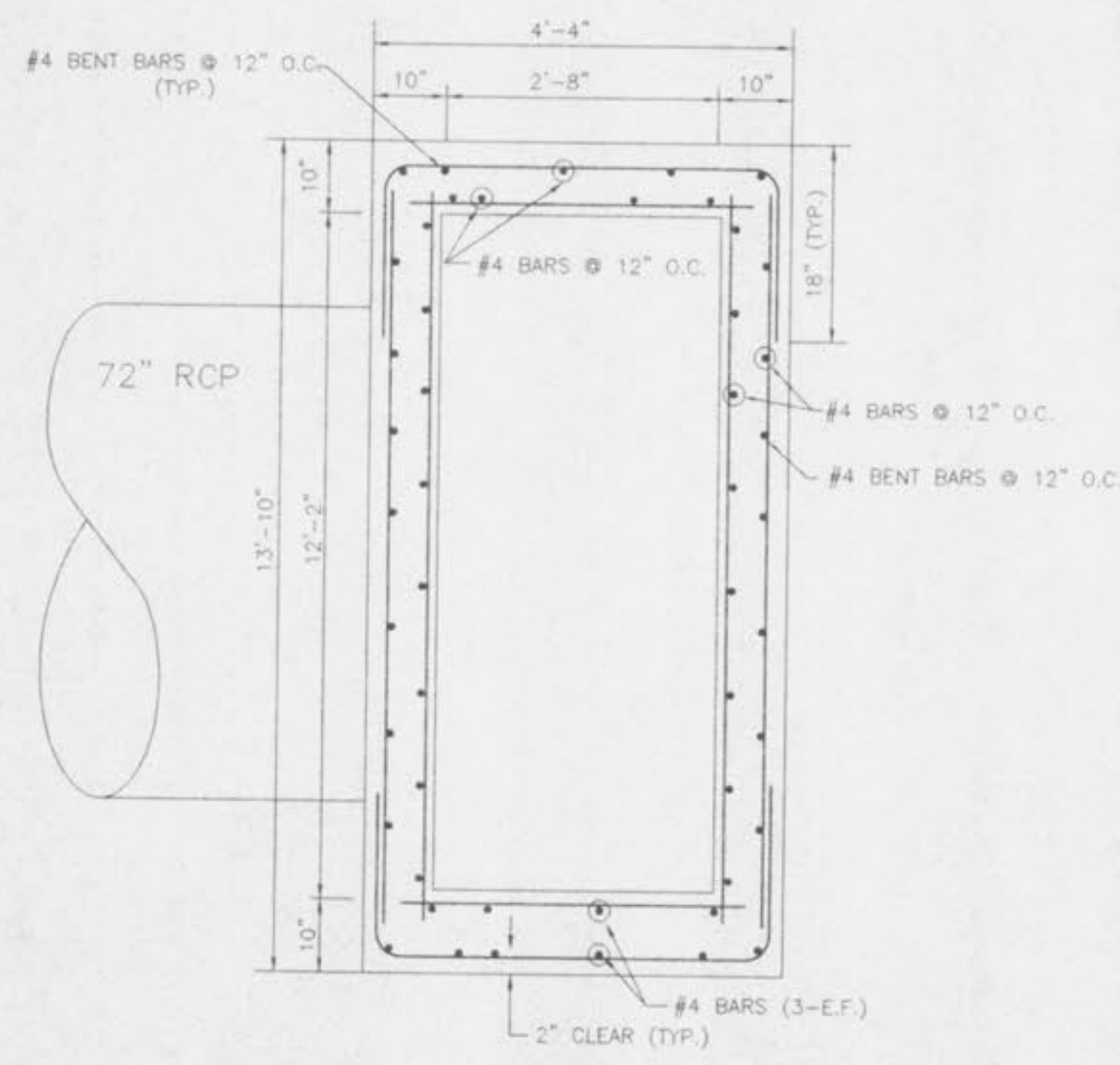


OUTFALL STRUCTURE (111)  
SIDE VIEW  
(OUTSIDE FACE STEEL SHOWN)  
(NOT TO SCALE)

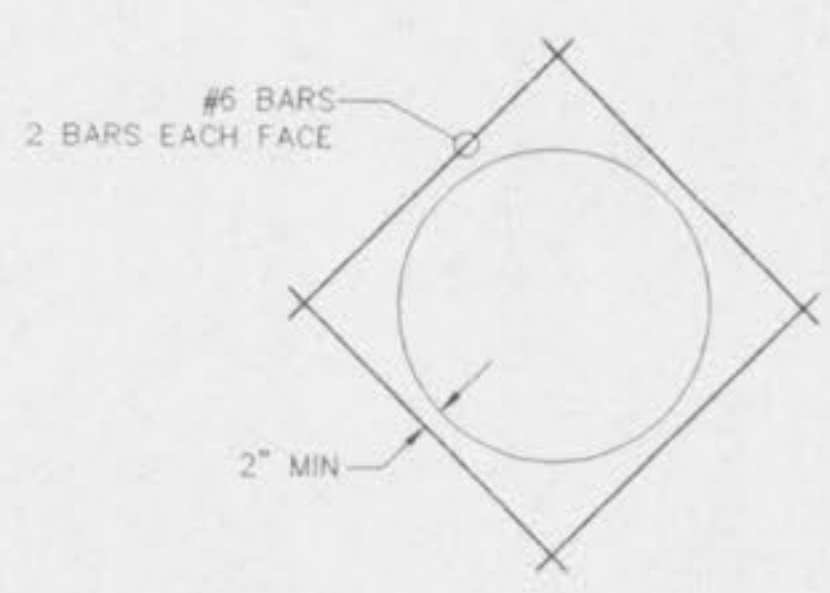


OUTFALL STRUCTURE (111)  
FRONT ELEVATION  
(OUTSIDE FACE STEEL SHOWN)  
(NOT TO SCALE)

OUTFALL STRUCTURE (111)  
REAR ELEVATION  
(OUTSIDE FACE STEEL SHOWN)  
(NOT TO SCALE)



SECTION A-A  
(NOT TO SCALE)



DETAIL SHOWING REINFORCING  
AROUND OPENINGS

CONSTRUCTION NOTES:

- Concrete for the structure shall be "air entrained" and contain at least 6 sack Class "A" Portland Cement per cubic yard. The concrete shall be placed at a slump of 4 inches  $\pm$  1/2 inch. The concrete shall be proportioned and transported in accordance with ASTM C-94.
- Reinforcing steel shall conform to ASTM C-615-60 with deformations conforming to ASTM A-305 and shall have a minimum cover of 2 inches except for 3 inches where concrete is poured against earth.
- Laps and/or splices in reinforcing steel shall be a minimum of 30 bar diameters.
- Keyed joints shown are to be 2-inch by 2-inch keyed construction joints.
- $P_s = 24,000$  psi.
- $P_c = 3,750$  psi.
- All exposed edges to have a 3/4-inch Chamfer.
- Contractor to provide for bypass of stormwater during construction of structure, by means of an interim ditch.
- Soil density tests shall be obtained by the soils engineer at selected intervals to insure compliance with soils specifications.
- All soil specifications shall be directed by soils engineer.
- Note: Dry detention basins are to be sodded.

ISSUE	REMARKS/DATE
1	8/12/96
2	8/23/96
3	9/4/96
4	9/25/96
5	10/9/96

PREPARED FOR:  
**J.H.B. PROPERTIES, INC.**  
5091 NEW BAUMGARTNER ROAD  
ST. LOUIS, MO 63129  
PHONE: (314) 487-8717



PREPARED BY:  
the  
**STERLING**  
ENGINEERS, SURVEYORS AND PLANNERS  
5055 NEW BAUMGARTNER ROAD  
ST. LOUIS, MISSOURI 63129  
CO.  
(314) 487-0440, FAX 487-8944

PROJECT: CHADWYCK  
DRAWN: CHADWYCK  
DESIGNED: CHADWYCK  
CHECKED: CHADWYCK  
SHEET TITLE: OUTFALL STRUCTURE DETAILS

NO	05	08	193
M.S.D.			SHEET
P#	29		31
DIGITAL FILE LOCATION: STERLING-1			
C:\ASSETS\PROJECTS\0508193\0508193.DWG			