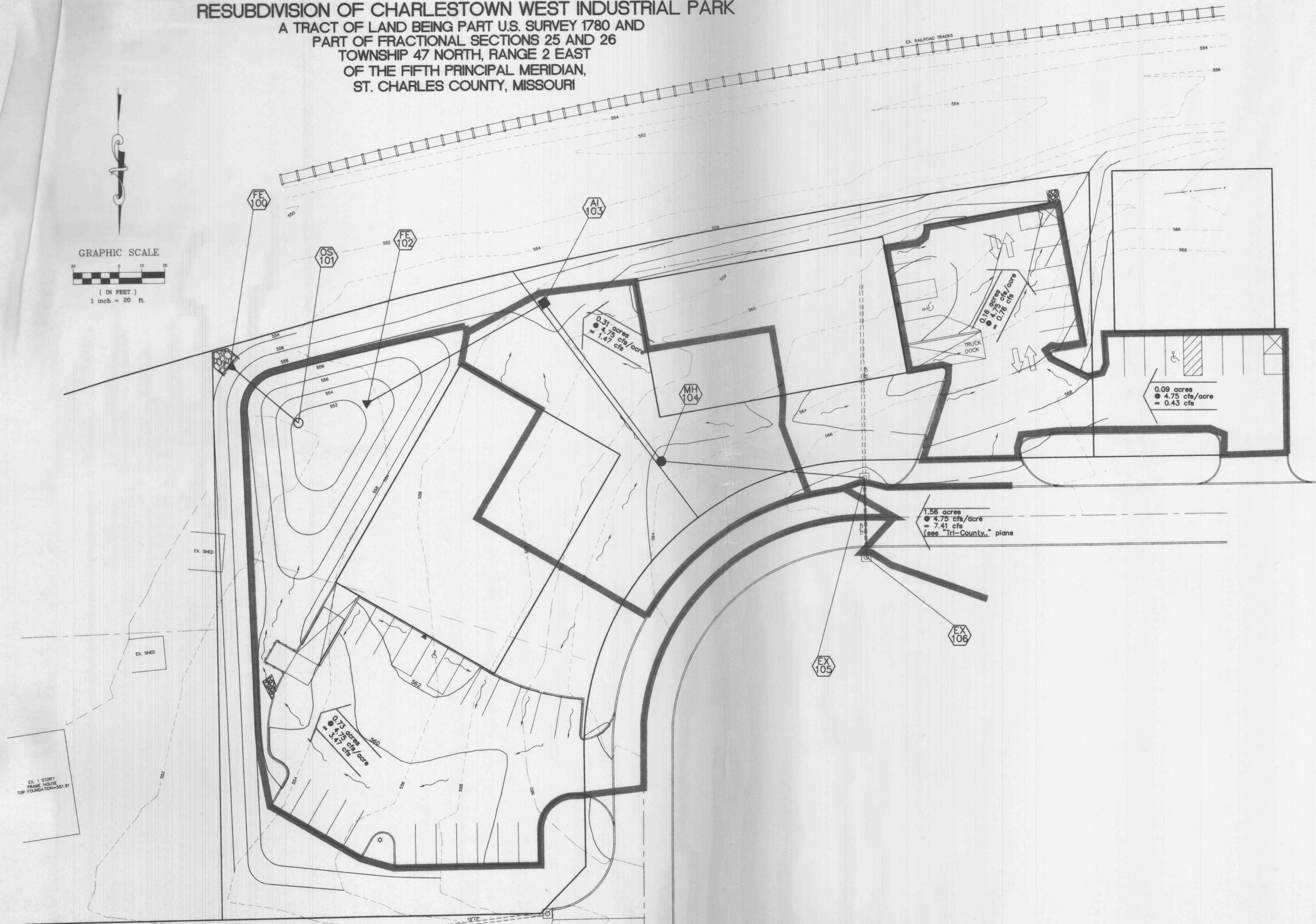
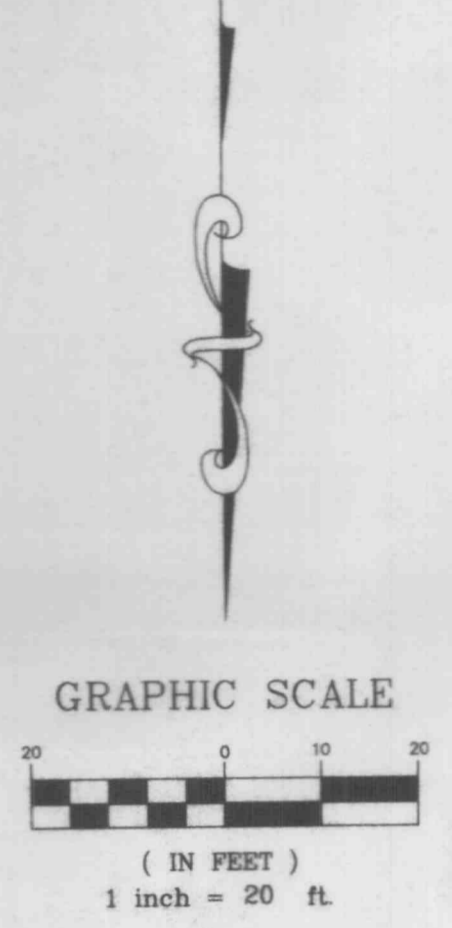


A DRAINAGE AREA MAP OF
 RESUBDIVISION OF ALL OF LOTS 1,2,3, AND 4 OF
 RESUBDIVISION OF CHARLESTOWN WEST INDUSTRIAL PARK
 A TRACT OF LAND BEING PART U.S. SURVEY 1780 AND
 PART OF FRACTIONAL SECTIONS 25 AND 26
 TOWNSHIP 47 NORTH, RANGE 2 EAST
 OF THE FIFTH PRINCIPAL MERIDIAN,
 ST. CHARLES COUNTY, MISSOURI



JOHN SHELTON
 ROUTE 3, BOX 37
 MONTGOMERY CITY, MO 63361
 573-564-3498

PREPARED FOR:

DISCLAIMER OF RESPONSIBILITY
 I hereby specify that the documents intended to be authorized by my seal are limited to this sheet, and I hereby disclaim any responsibility for all other drawings, specifications, estimates, reports or other documents or instruments relating to or intended to be used for any part or parts of the architectural or engineering project or survey.

Copyright 1994
 BSA Engineering Company, Inc.
 All Rights Reserved

REVISIONS

**ENGINEERING
 PLANNING
 SURVEYING**

1052 South Cloverleaf Drive
 St. Peters, MO. 63376-6445
 314-928-5552
 FAX 928-1718

2-7-97
 DATE
 96-8569
 PROJECT NUMBER
 3 OF 3
 SHEET OF
 8569CON.DWG
 FILE NAME
 RJS RLF
 DRAWN CHECKED

DRAINAGE AREA MAP - NOT FOR CONSTRUCTION

STATION 27 1987 05 25 08 5