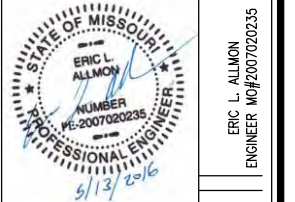




- CORPORATE OFFICE
4940 OLD COLLINSVILLE RD.
SWANSEA, ILLINOIS 62226
TEL (618) 624-4488
FAX (618) 624-6688
- WATERLOO OFFICE
113 SOUTH MAIN STREET
WATERLOO, ILLINOIS 62298
TEL (618) 939-5050
FAX (618) 939-3938
- EDWARDSVILLE OFFICE
600 COUNTRY CLUB VIEW, SUITE 1
EDWARDSVILLE, ILLINOIS 62025
TEL (618) 656-4040
FAX (618) 656-4343
- ST. LOUIS OFFICE
720 OLIVE ST., SUITE 200A
ST. LOUIS, MISSOURI 63101
TEL (314) 241-6300
FAX (314) 241-2391
- ST. CHARLES OFFICE
400 N. 5TH STREET, SUITE 101
ST. CHARLES, MISSOURI 63301
TEL (636) 724-8300
FAX (636) 724-8304

PROFESSIONAL REGISTRATIONS	LICENSE NO.
ILLINOIS PROFESSIONAL DESIGN FIRM	184-001220
PROFESSIONAL ENGINEERING CORP.	62-036370
PROFESSIONAL STRUCTURAL ENGR. CORP.	81-005202
ILLINOIS PROF. LAND SURVEYING CORP.	048-000029
MISSOURI PROFESSIONAL ENGR. CORP.	NC 001528
MISSOURI LAND SURVEYING CORP.	NC 000346



STATEMENT OF RESPONSIBILITY
I hereby confirm that the document herein to be authenticated by my seal is restricted to this sheet, and I hereby disclaim any responsibility for all other drawings, specifications, estimates, reports or other documents or instruments relating to or intended to be utilized for any other part of the architectural, engineering or survey project.

TITLE:
SITE PLAN
PROJECT LOCATION #2

PROJECT:
CHERRYWOOD PARC SUBDIVISION
DETENTION BASIN
IMPROVEMENT PLANS
CITY OF FALLON, MO

REV.	DATE	DESCRIPTION
△	5/13/16	REVISED PER CITY COMMENTS
△		
△		

DRAWN BY: ELA	SHEET
DESIGNED BY: ELA	3
CHECKED BY: RSC	OF 4 SHEETS
APPROVED BY: ELA	5/13/16
PROJECT NUMBER: 160113	
<input checked="" type="checkbox"/> ISSUED FOR REVIEW	<input type="checkbox"/> ISSUED FOR BIDDING
<input type="checkbox"/> ISSUED FOR CONSTR.	<input type="checkbox"/> RECORD DRAWING

GENERAL NOTES

1. SITE ACCESS TO LOCATION #2 IS THROUGH LOT A CG. CONTRACTOR IS TO MARK THE PROPERTY CORNERS OF THE LOT TO ENSURE THE AREA OF DISTURBANCE DOES NOT ENCRUCH UPON ADJACENT PROPERTIES.
2. AREAS DISTURBED OUTSIDE OF THE PROJECT LIMITS ARE TO BE RESODDED UPON COMPLETION OF THE PROJECT. THE CONTRACTOR IS RESPONSIBLE FOR MAINTAINING THE SODDED AREA UNTIL THE ROOT SYSTEM IS ESTABLISHED.
3. ALL EXISTING VEGETATION AND TOPSOIL IS TO BE REMOVED FROM PLANNED CONSTRUCTION AREAS PRIOR TO PLACING FILL. CLEARING AND GRUBBING INCLUDES REMOVAL OF GRASS, DEBRIS, AND SEDIMENT IN THE PROJECT AREA.
4. REMOVAL OF IMPROVEMENTS INCLUDES REMOVAL OF ITEMS SUCH AS CONCRETE SWALES, ENERGY DISSIPATION STRUCTURES, RIP-RAP (LOOSE & GROUTED), AND OTHER MANMADE IMPROVEMENTS WITHIN THE PROJECT LIMITS.
5. REMOVE SEDIMENT FROM THE CONCRETE SWALE TO REESTABLISH THE FLOWLINE OF THE CHANNEL. WORK TO BE INCLUDED IN THE LUMP SUM REMOVAL OF IMPROVEMENTS PAY ITEM.
6. THE CONTRACTOR IS RESPONSIBLE TO PROTECT THE EXISTING PUBLIC STORM AND SANITARY STRUCTURES DURING CONSTRUCTION. SHOULD ANY DAMAGE TO THE PUBLIC STORM AND SANITARY STRUCTURES BY THE CONTRACTOR, EITHER DIRECTLY OR INDIRECTLY, THE CONTRACTOR SHALL REPAIR THE STRUCTURE TO THE SATISFACTION OF THE CITY OF O'FALLON. (NO DIRECT PAY)
7. SEEDING RATE: TALL FESCUE - 220LBS/AC; SEEDING PERIOD - MARCH 1ST THROUGH JUNE 1ST AND AUGUST 1ST THROUGH OCTOBER 1ST. CONTRACTOR IS RESPONSIBLE FOR THE PERFORMANCE OF THE NEW GRASS UNTIL THE SITE IS 90% VEGETATED. SITE SHALL BE SEEDD PRIOR TO INSTALLATION OF VMAX SC250 TURF REINFORCEMENT MAT (TRM). SEEDING SHALL BE PAID FOR AT BEYOND WHAT IS INCLUDED IN THE BID QUANTITIES.
8. VMAX SC250 TRM AND SHOREMAX TRANSITION MAT SHALL BE INSTALLED PER MANUFACTURERS SPECIFICATIONS. SEE DETAILS FOR STAKING AND ANCHORING GUIDE.
9. FILL SHALL BE COMPACTED TO A DENSITY EQUAL TO THE ADJACENT SOILS.
10. STRAW BALES TO BE INSPECTED AFTER EACH STORM AND PROMPTLY REPAIRED AS NEEDED. ALL COLLECTED SEDIMENT SHALL BE REMOVED WHEN DEPOSITS REACH APPROXIMATELY ONE HALF (1/2) OF THE HEIGHT OF THE DITCH CHECK. INSTALLATION AND MAINTENANCE OF THE STRAW BALES IS INCLUDED IN THE LUMP SUM PRICE FOR MISC. EROSION CONTROL.
11. IN ADDITION TO STRAW BALES, THE "MISC. EROSION CONTROL" LINE ITEM COVERS ANY ADDITIONAL EROSION CONTROL NOT SHOWN ON THE PLANS AS DIRECTED BY THE CITY OF O'FALLON OR NECESSARY TO PROTECT THE SITE FROM ERODING SOILS UNTIL VEGETATION HAS BEEN ESTABLISHED.
12. THE CONDITION OF THE STREET/SIDEWALK WILL BE DOCUMENTED BEFORE CONSTRUCTION OCCURS. ANY ADDITIONAL DAMAGE WILL BE REQUIRED TO BE REPLACED BY THE CONTRACTOR (NO DIRECT PAY).
13. PR 6" PVC PIPE TO BE INSTALLED BY OTHERS. THE CONTRACTOR SHALL PROVIDE A 1' WIDE BY 18" DEEP TRENCH TO ACCOMMODATE PIPE INSTALLED BY PROPERTY OWNER (COST TO BE INCLUDED IN CLEARING & GRUBBING). THE CONTRACTOR SHALL COORDINATE WITH THE OWNER OF THE LOT 101 AND PROVIDE 24 HRS NOTICE TO ALLOW THE PROPERTY OWNER TO INSTALL PIPE.

