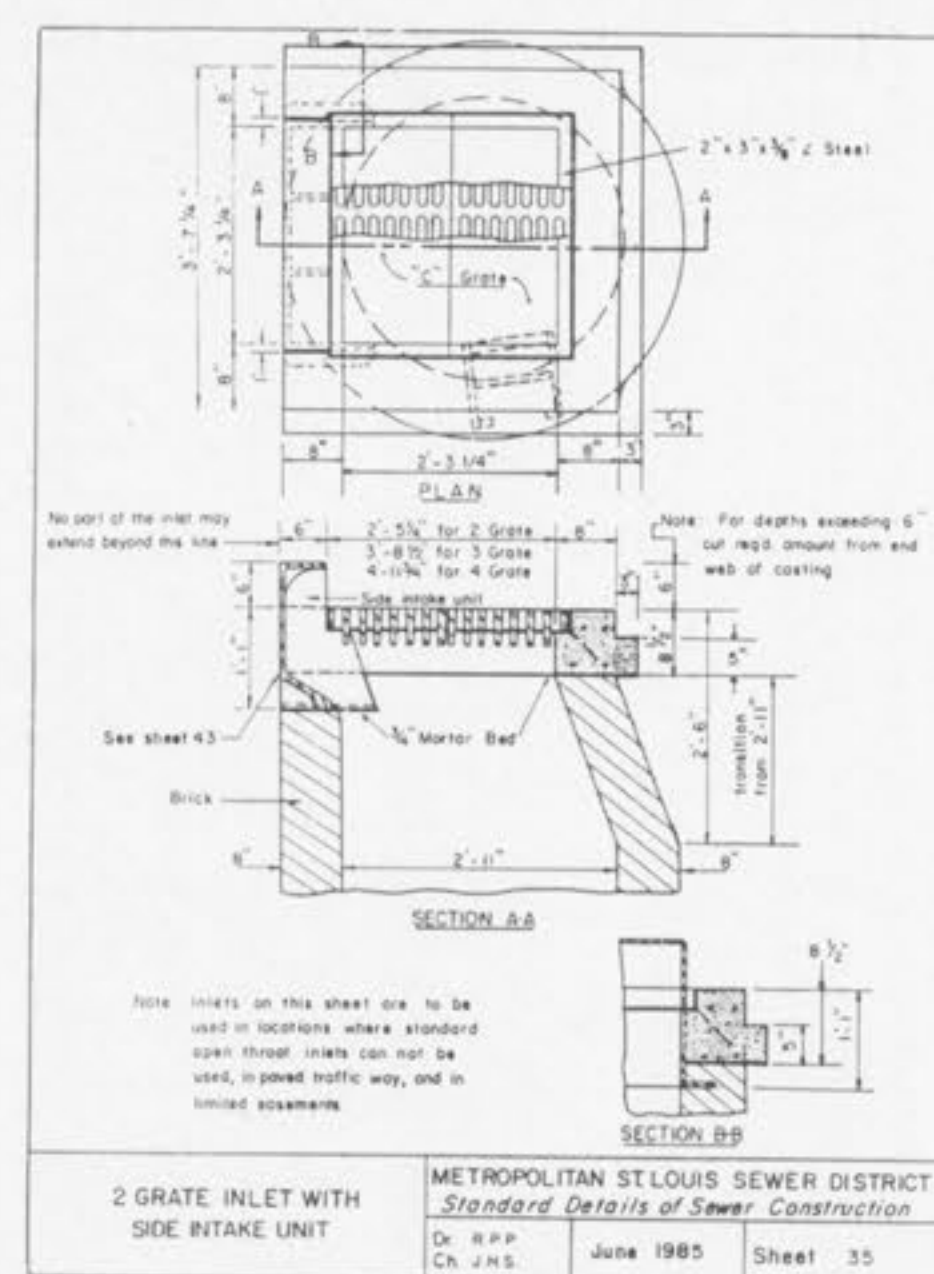
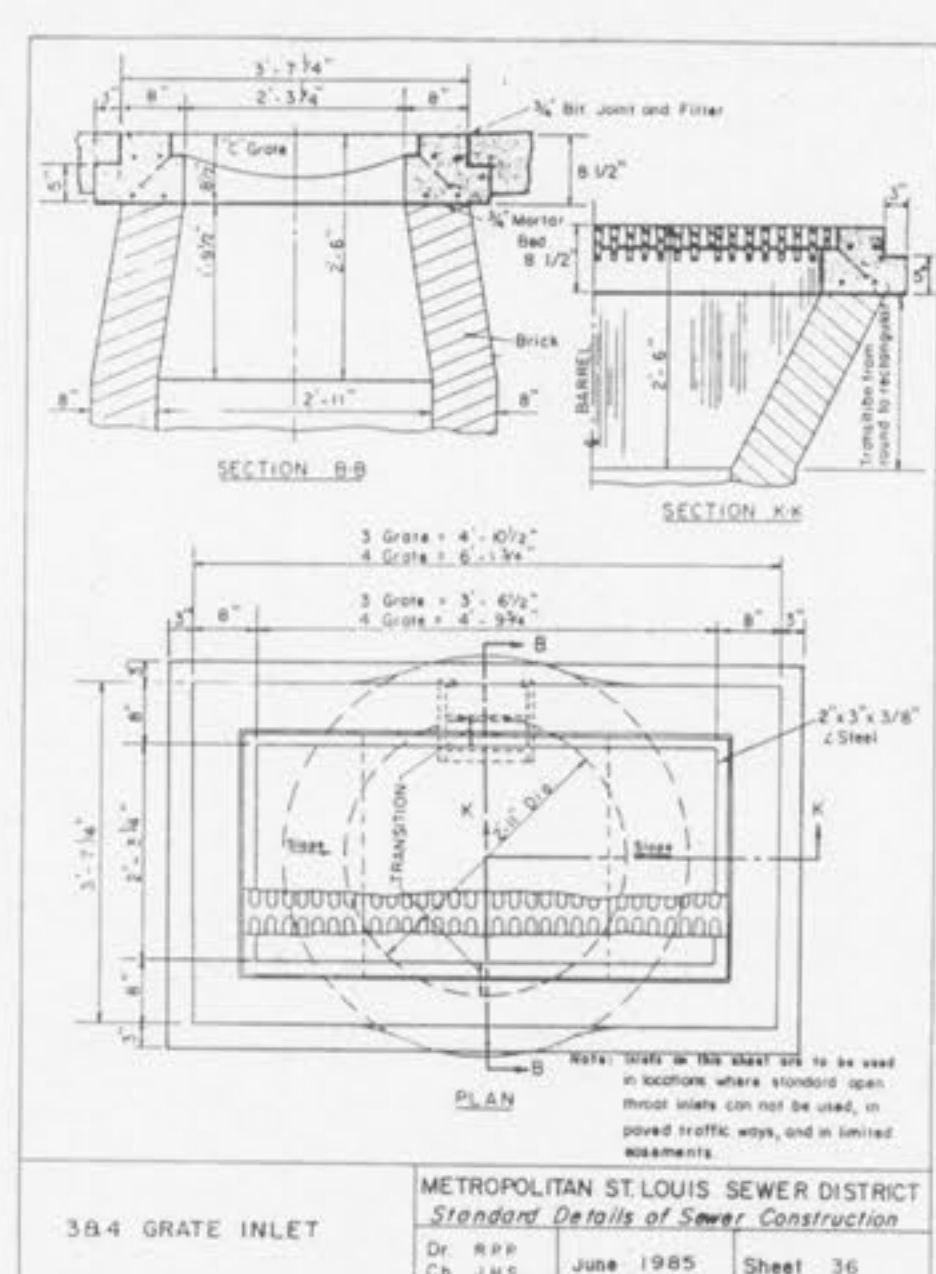


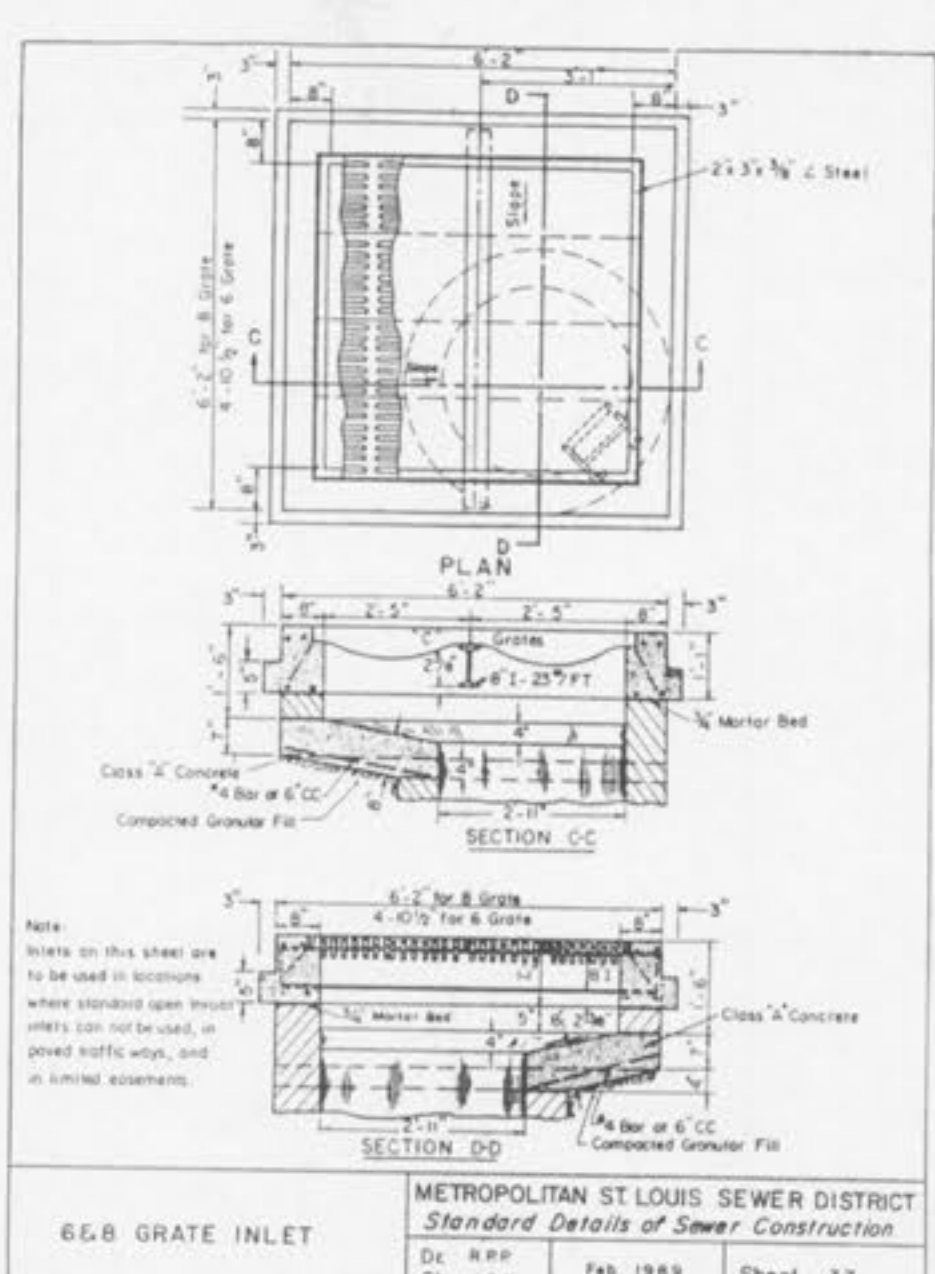
2 GRATE INLET
 METROPOLITAN ST. LOUIS SEWER DISTRICT
 Standard Details of Sewer Construction
 Dr. R.P.P. June 1984 Sheet 34



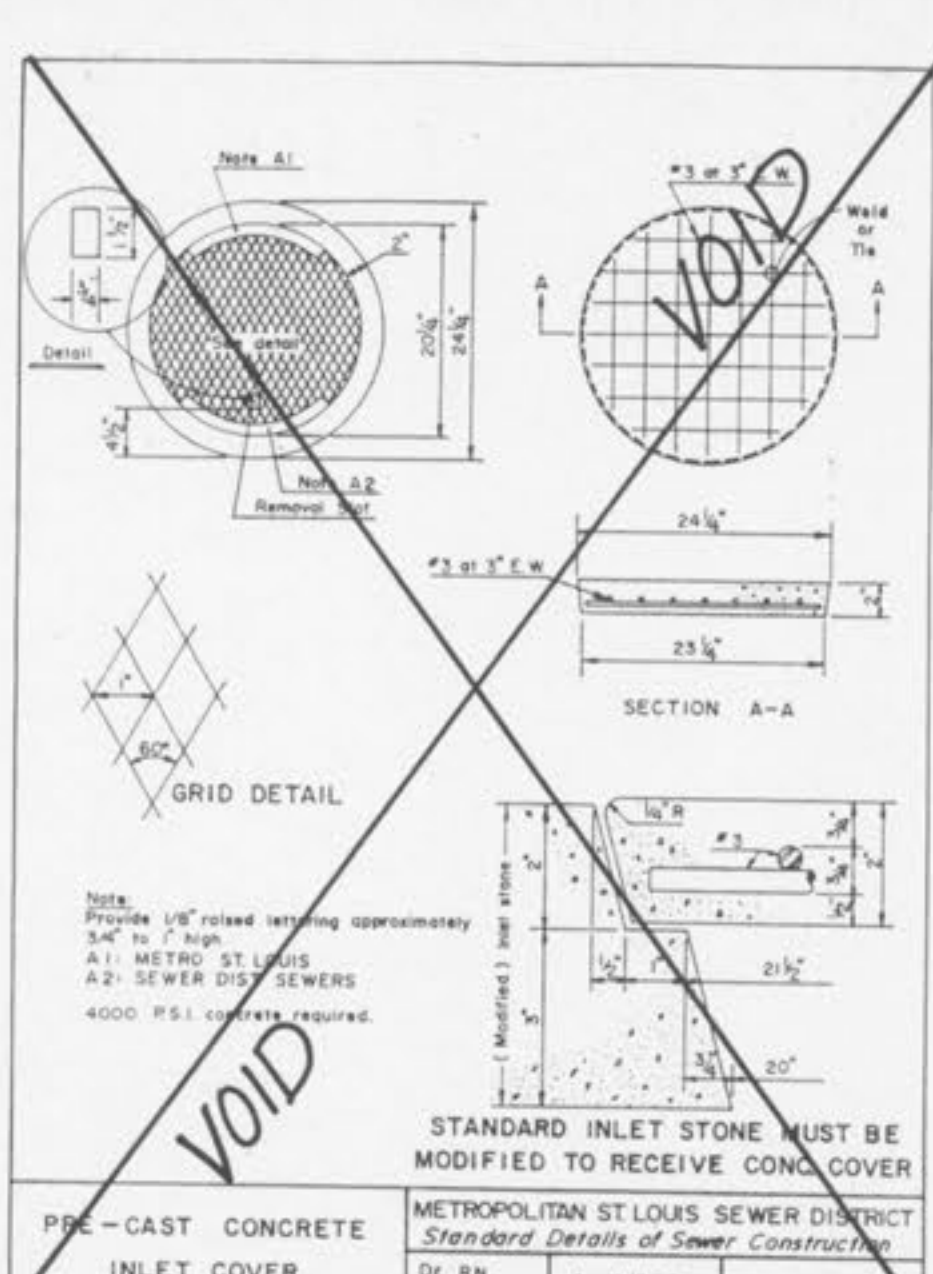
2 GRATE INLET WITH SIDE INTAKE UNIT
 METROPOLITAN ST. LOUIS SEWER DISTRICT
 Standard Details of Sewer Construction
 Dr. R.P.P. June 1985 Sheet 35



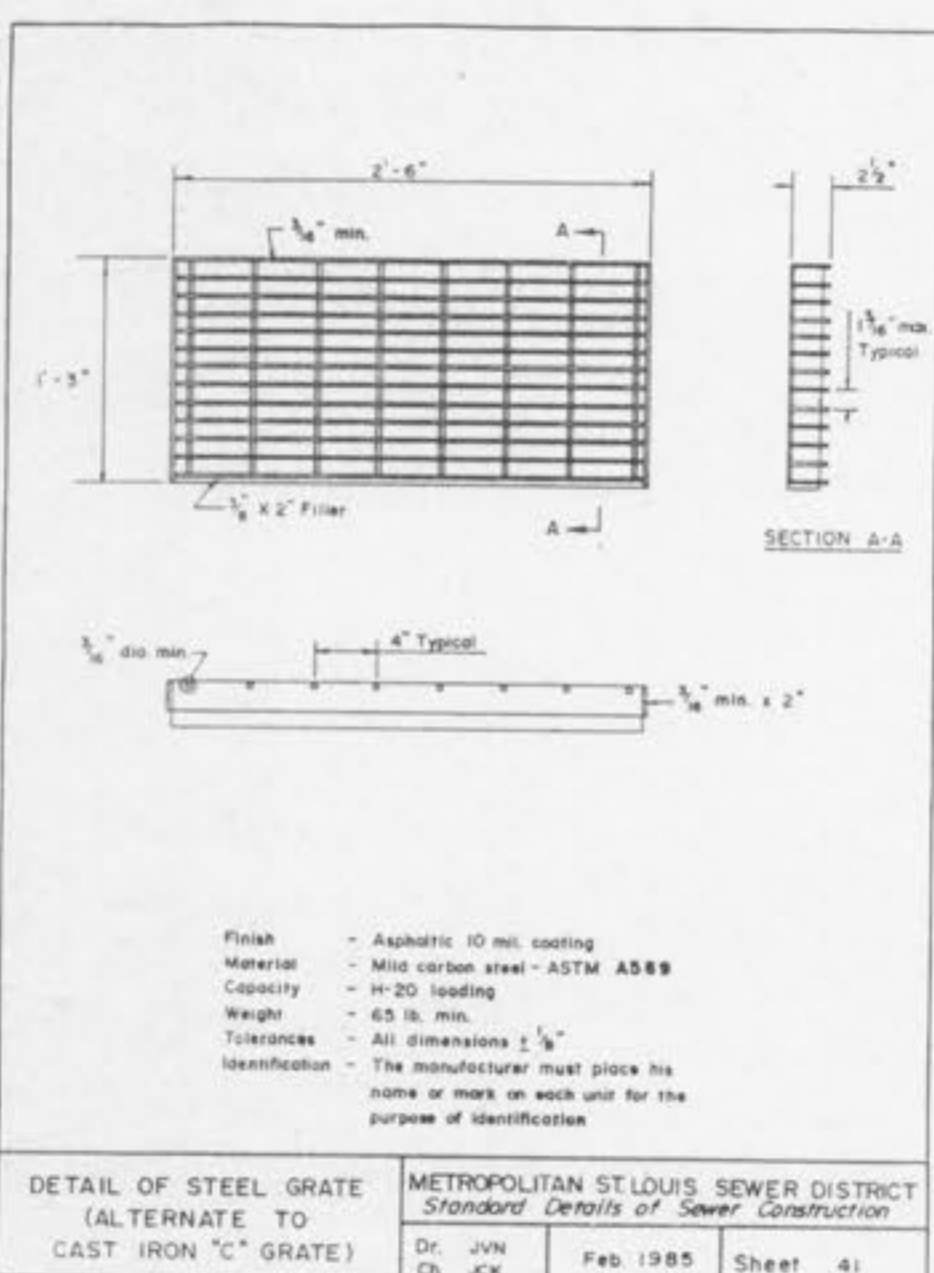
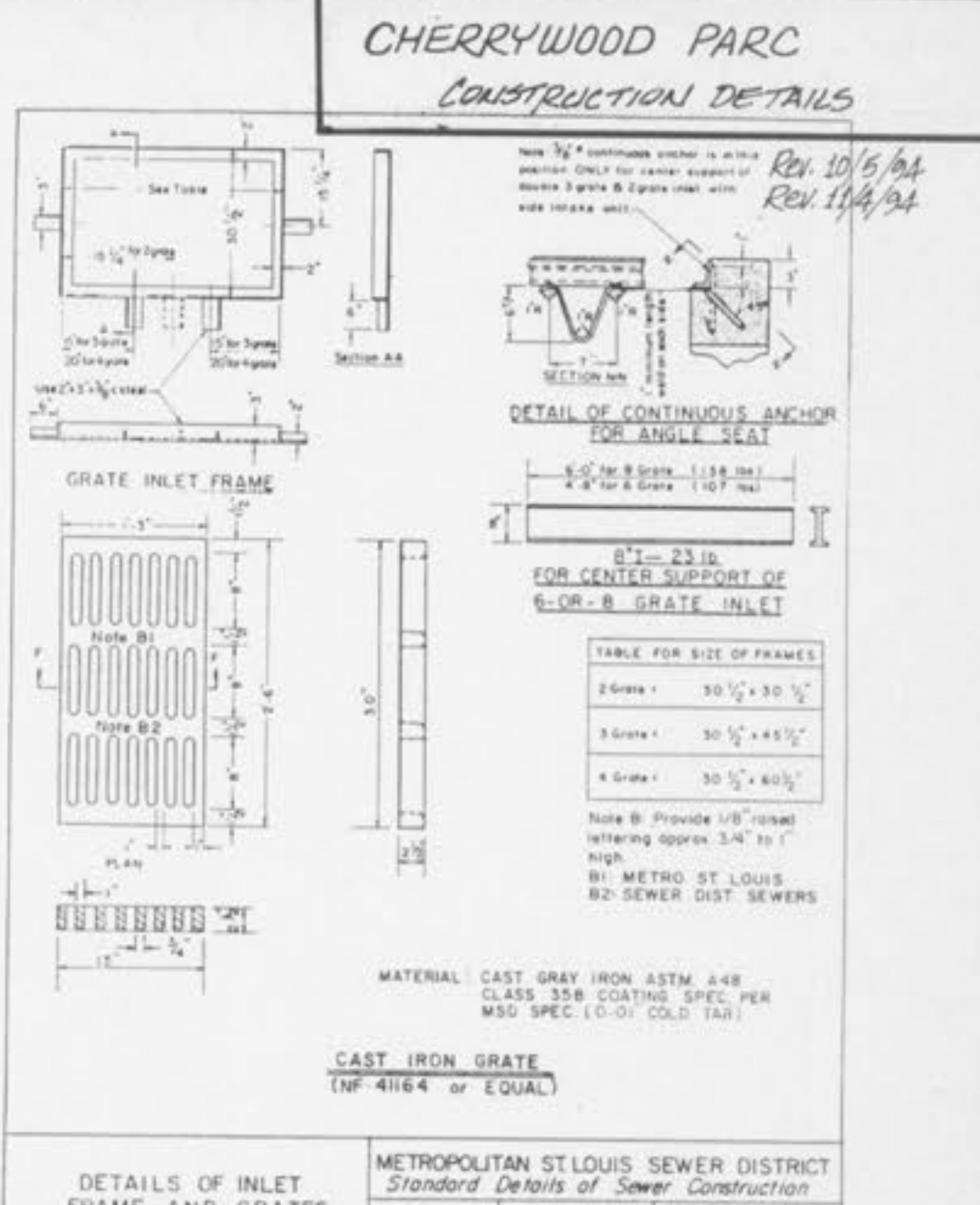
3B.4 GRATE INLET
 METROPOLITAN ST. LOUIS SEWER DISTRICT
 Standard Details of Sewer Construction
 Dr. R.P.P. June 1985 Sheet 36



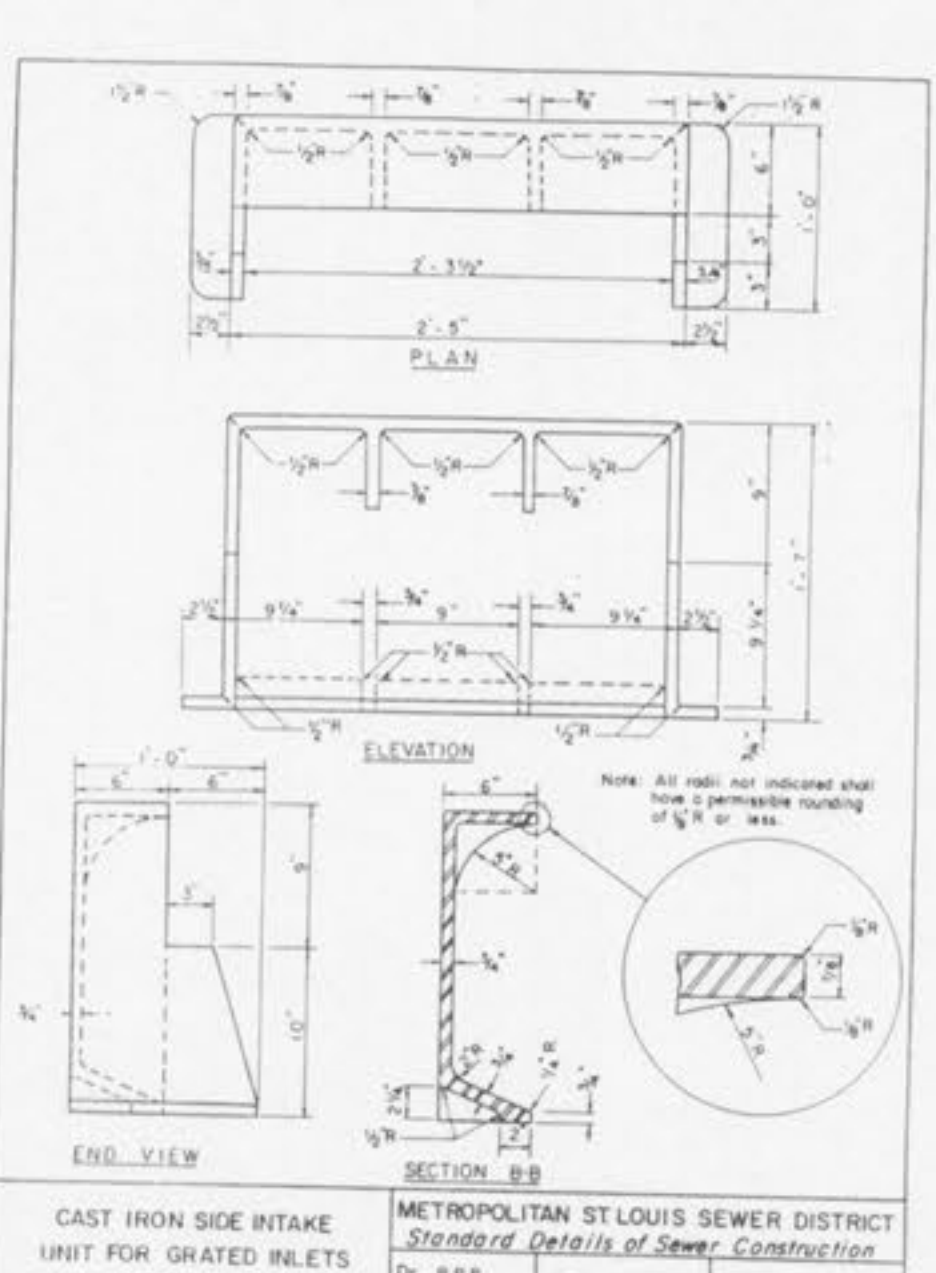
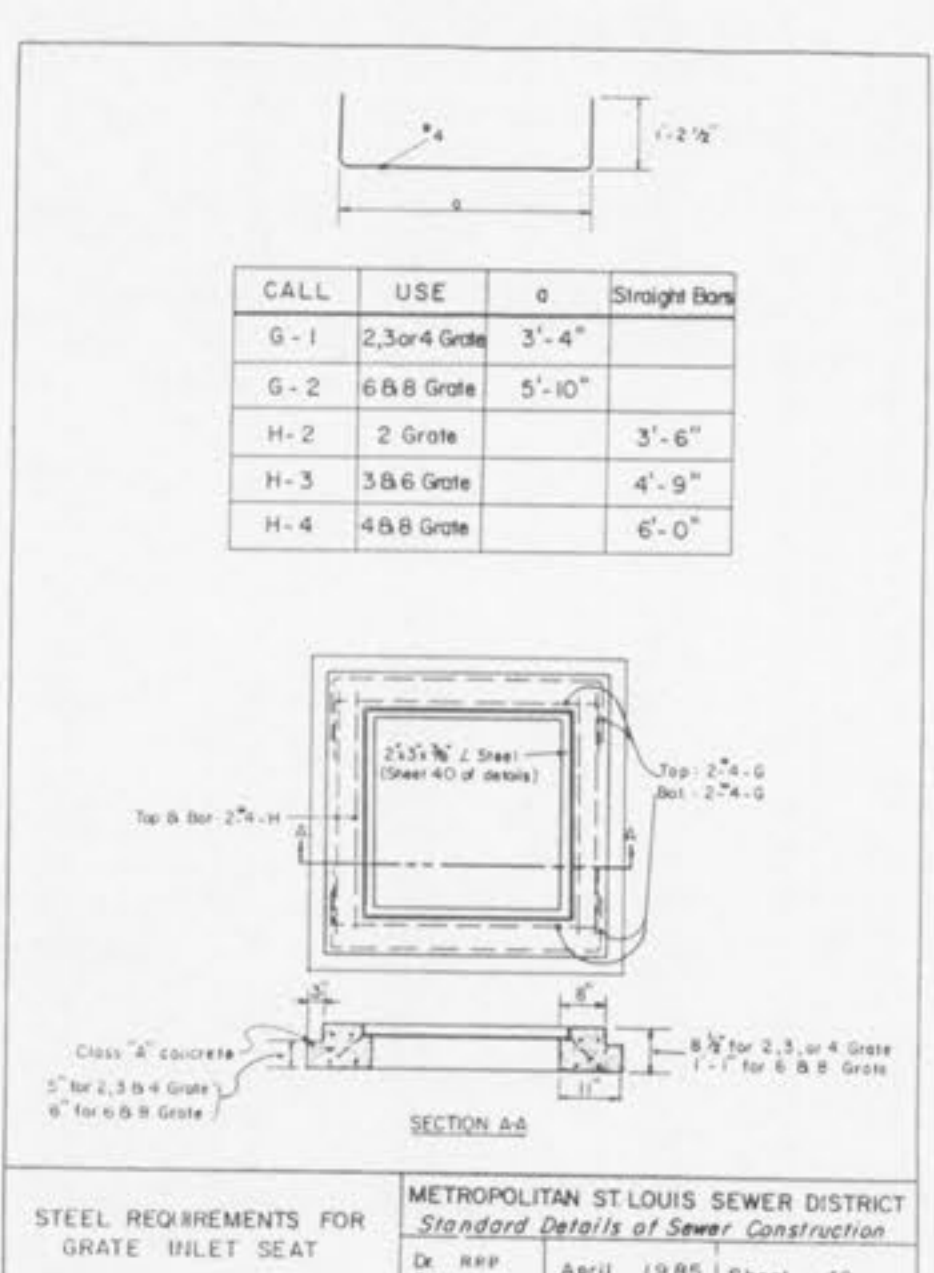
6B.8 GRATE INLET
 METROPOLITAN ST. LOUIS SEWER DISTRICT
 Standard Details of Sewer Construction
 Dr. R.P.P. Feb. 1989 Sheet 37



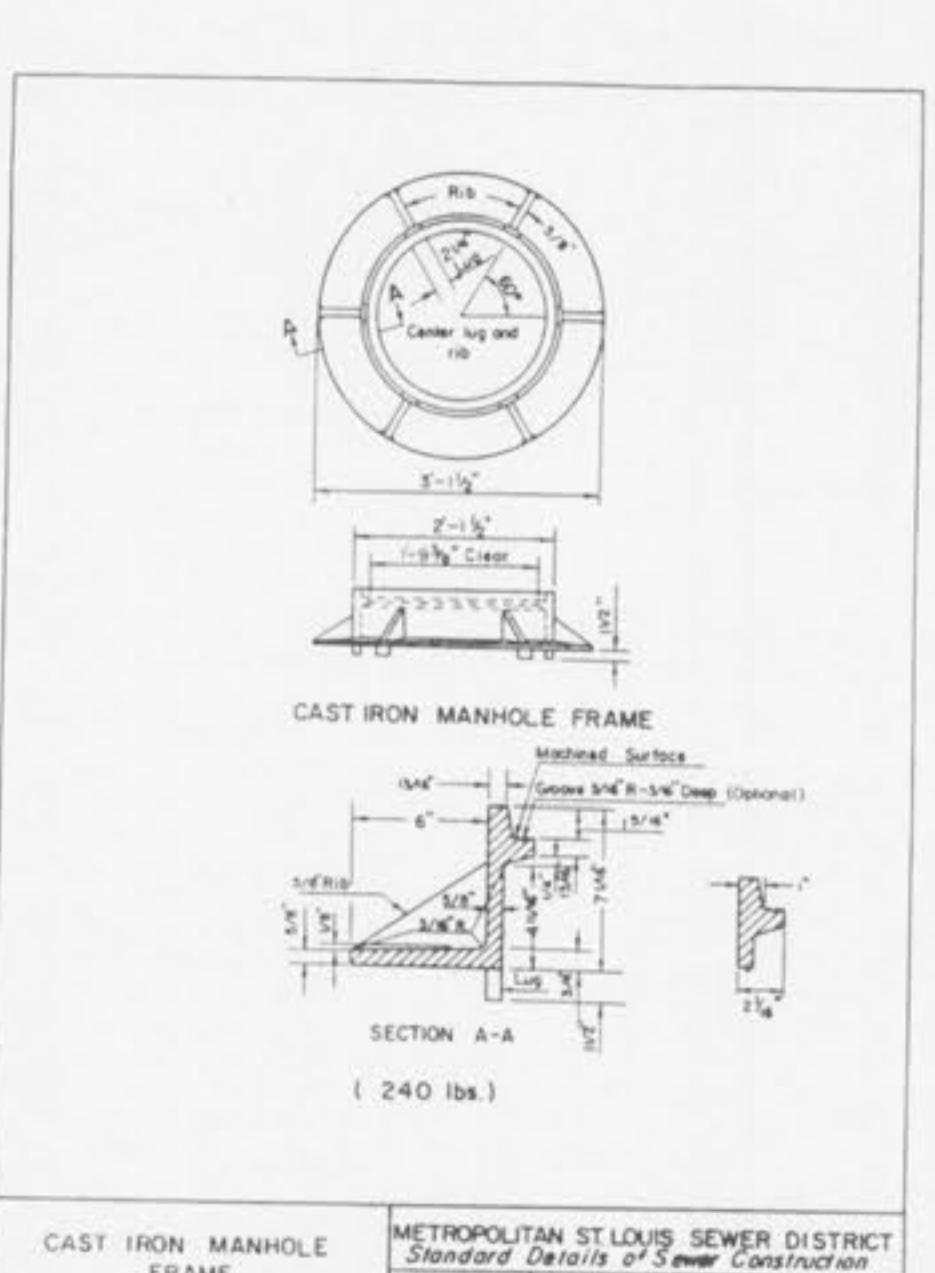
PRE-CAST CONCRETE INLET COVER
 METROPOLITAN ST. LOUIS SEWER DISTRICT
 Standard Details of Sewer Construction
 Dr. R.N. Ch. J.C.K. April 1985 Sheet 39



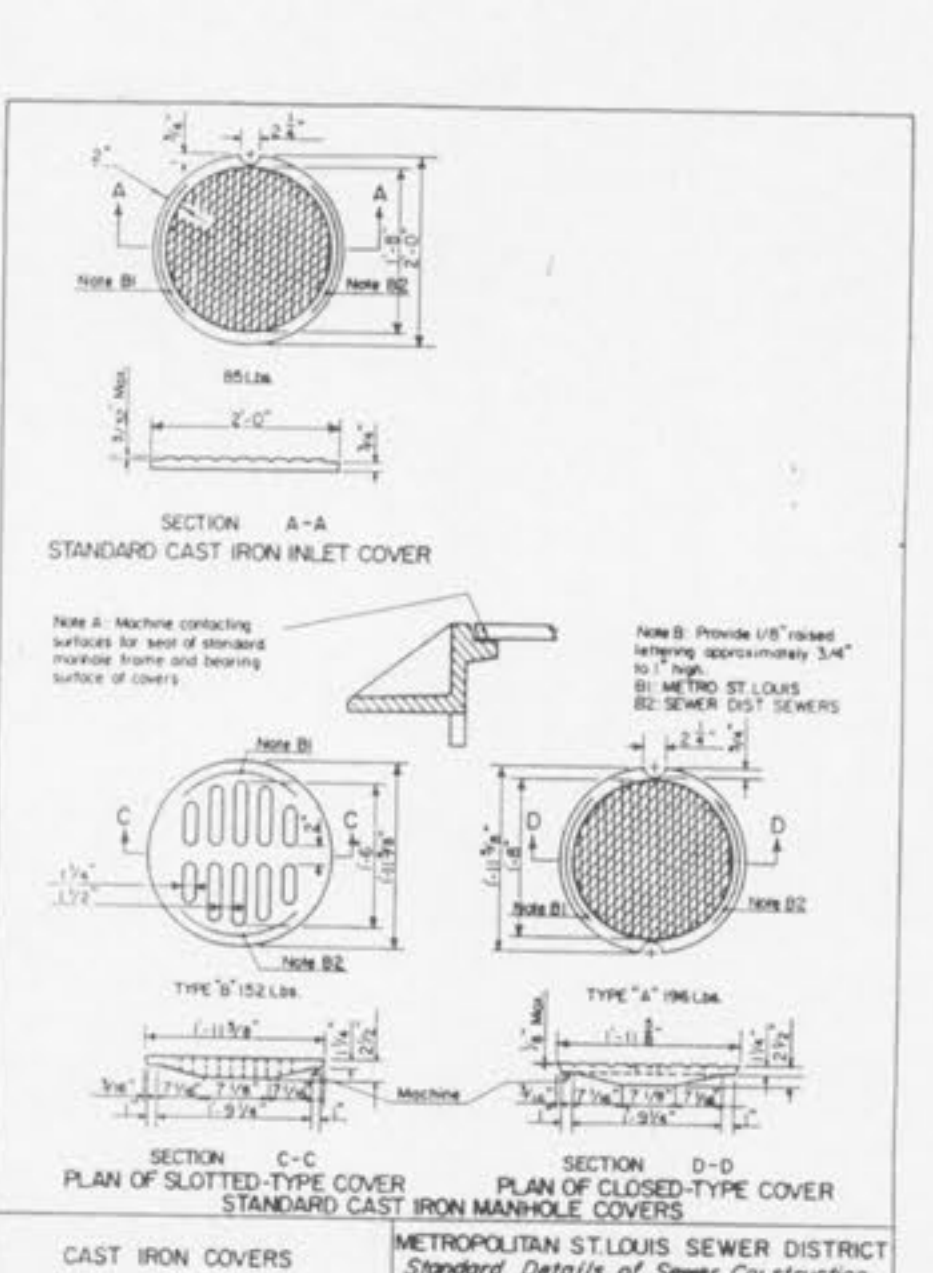
DETAIL OF STEEL GRATE (ALTERNATE TO CAST IRON 'C' GRATE)
 METROPOLITAN ST. LOUIS SEWER DISTRICT
 Standard Details of Sewer Construction
 Dr. J.W. Ch. J.C.K. Feb 1985 Sheet 41



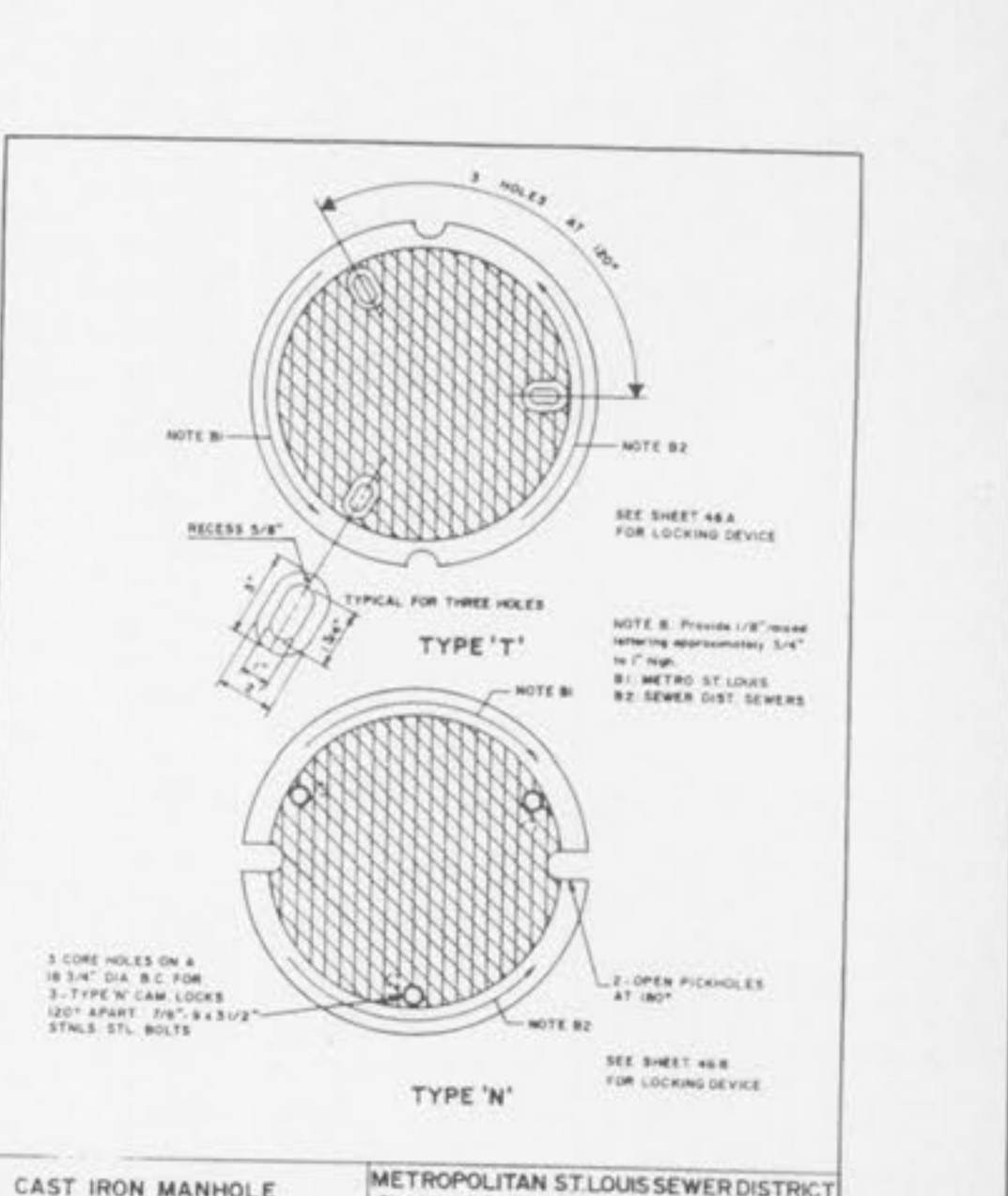
CAST IRON SIDE INTAKE UNIT FOR GRATED INLETS 249 LBS.
 METROPOLITAN ST. LOUIS SEWER DISTRICT
 Standard Details of Sewer Construction
 Dr. R.P.P. Ch. J.C.K. APRIL 1985 Sheet 43



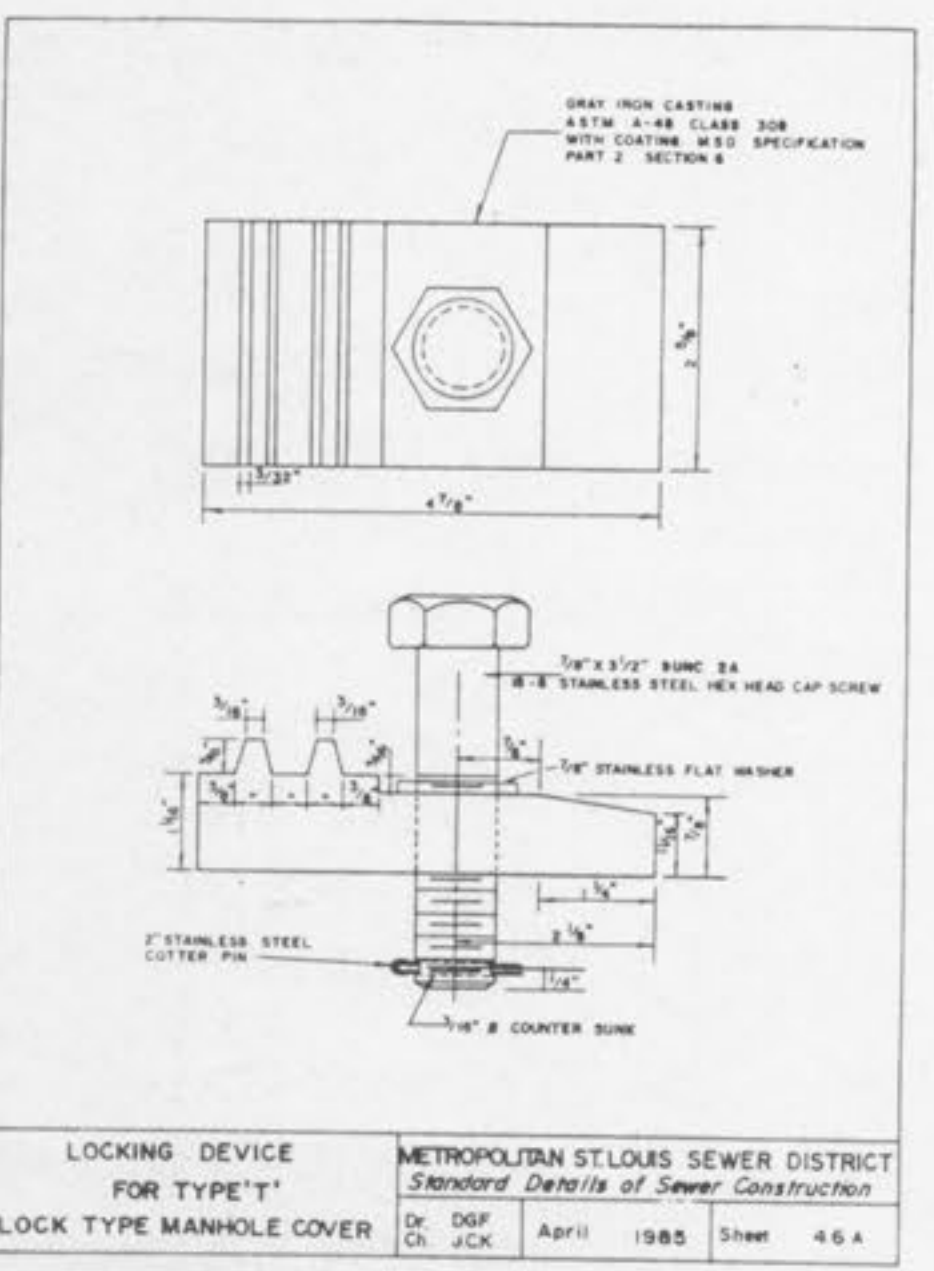
CAST IRON MANHOLE FRAME (240 lbs.)
 METROPOLITAN ST. LOUIS SEWER DISTRICT
 Standard Details of Sewer Construction
 Dr. A.M.P. Ch. J.C.K. April 1979 Sheet 44



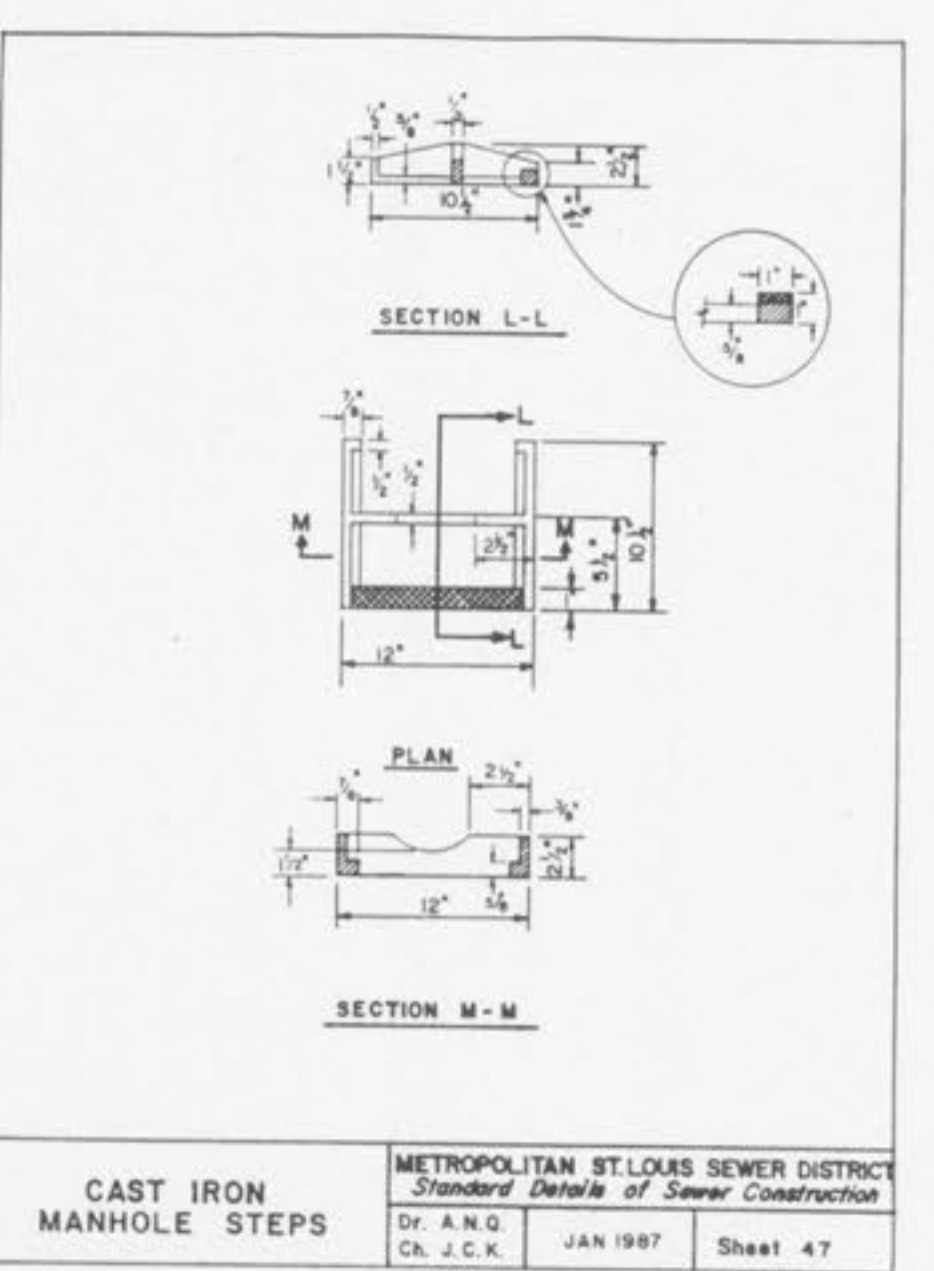
STANDARD CAST IRON INLET COVERS
 METROPOLITAN ST. LOUIS SEWER DISTRICT
 Standard Details of Sewer Construction
 Dr. A.D.S. Ch. J.C.K. April 1985 Sheet 45



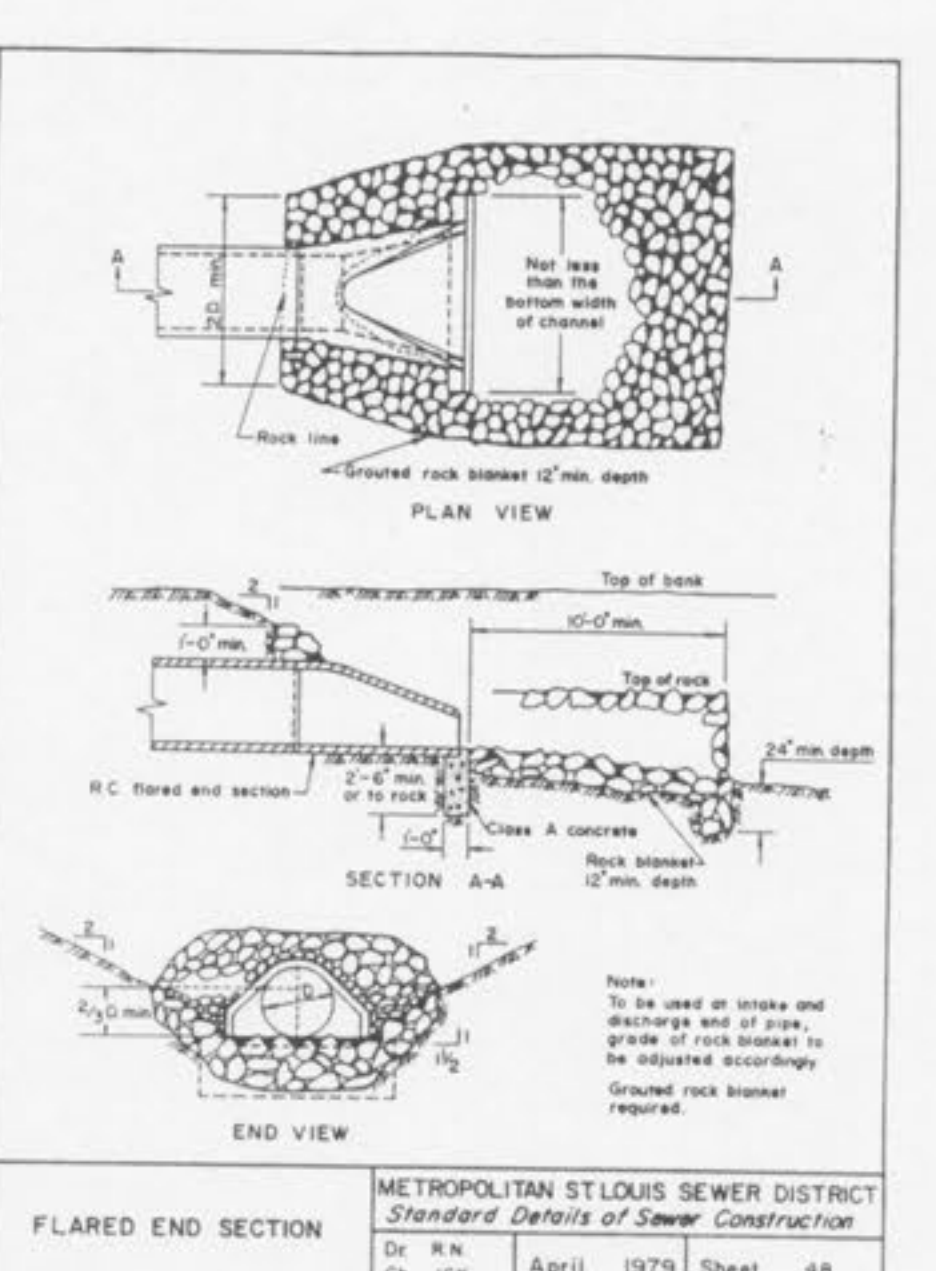
CAST IRON MANHOLE COVERS (LOCK TYPE)
 METROPOLITAN ST. LOUIS SEWER DISTRICT
 Standard Details of Sewer Construction
 Dr. R.J.S. Ch. J.C.K. April 1984 Sheet 46



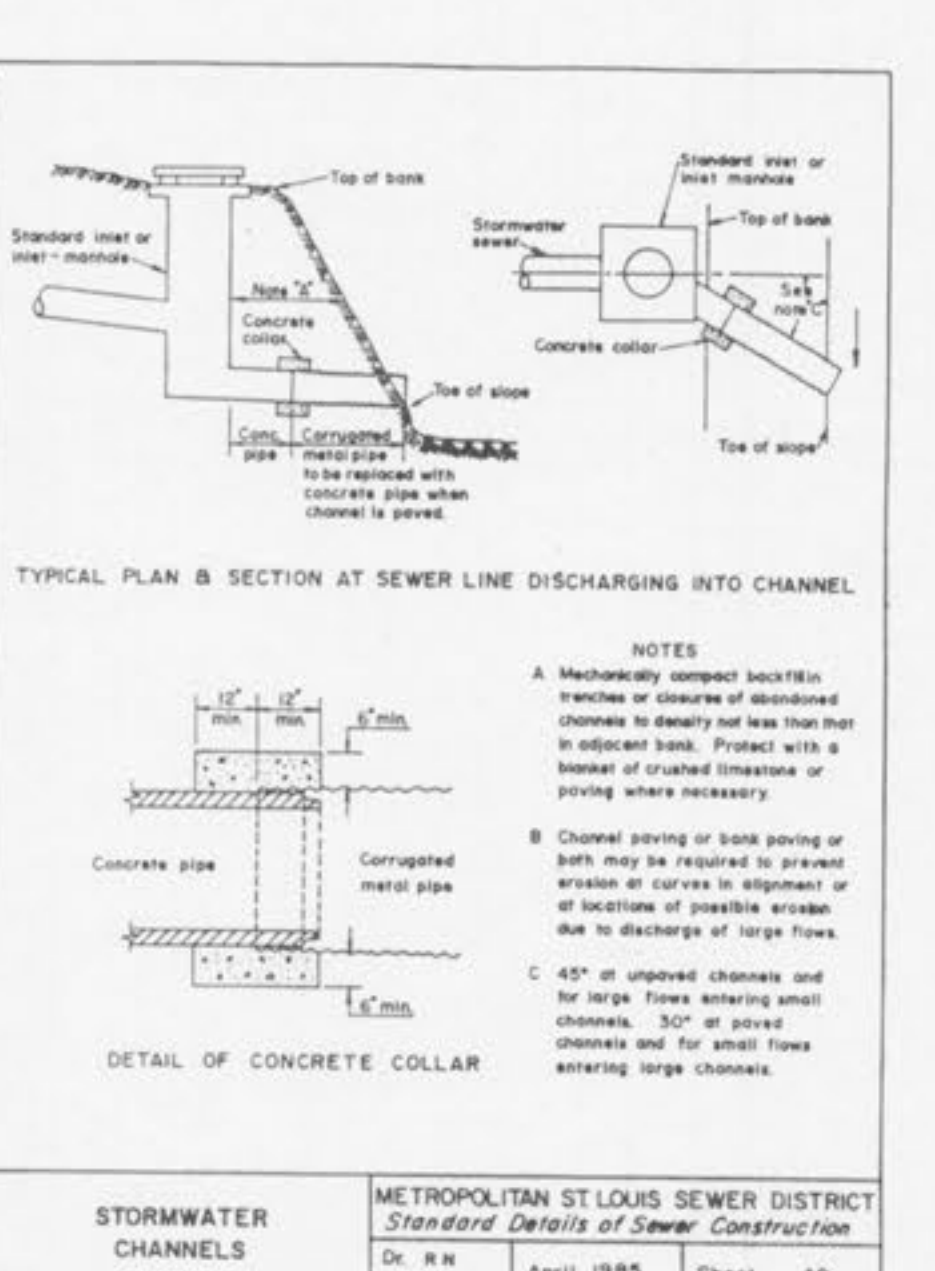
LOCKING DEVICE FOR TYPE 'T' LOCK TYPE MANHOLE COVER
 METROPOLITAN ST. LOUIS SEWER DISTRICT
 Standard Details of Sewer Construction
 Dr. D.G.F. Ch. J.C.K. April 1985 Sheet 46 A



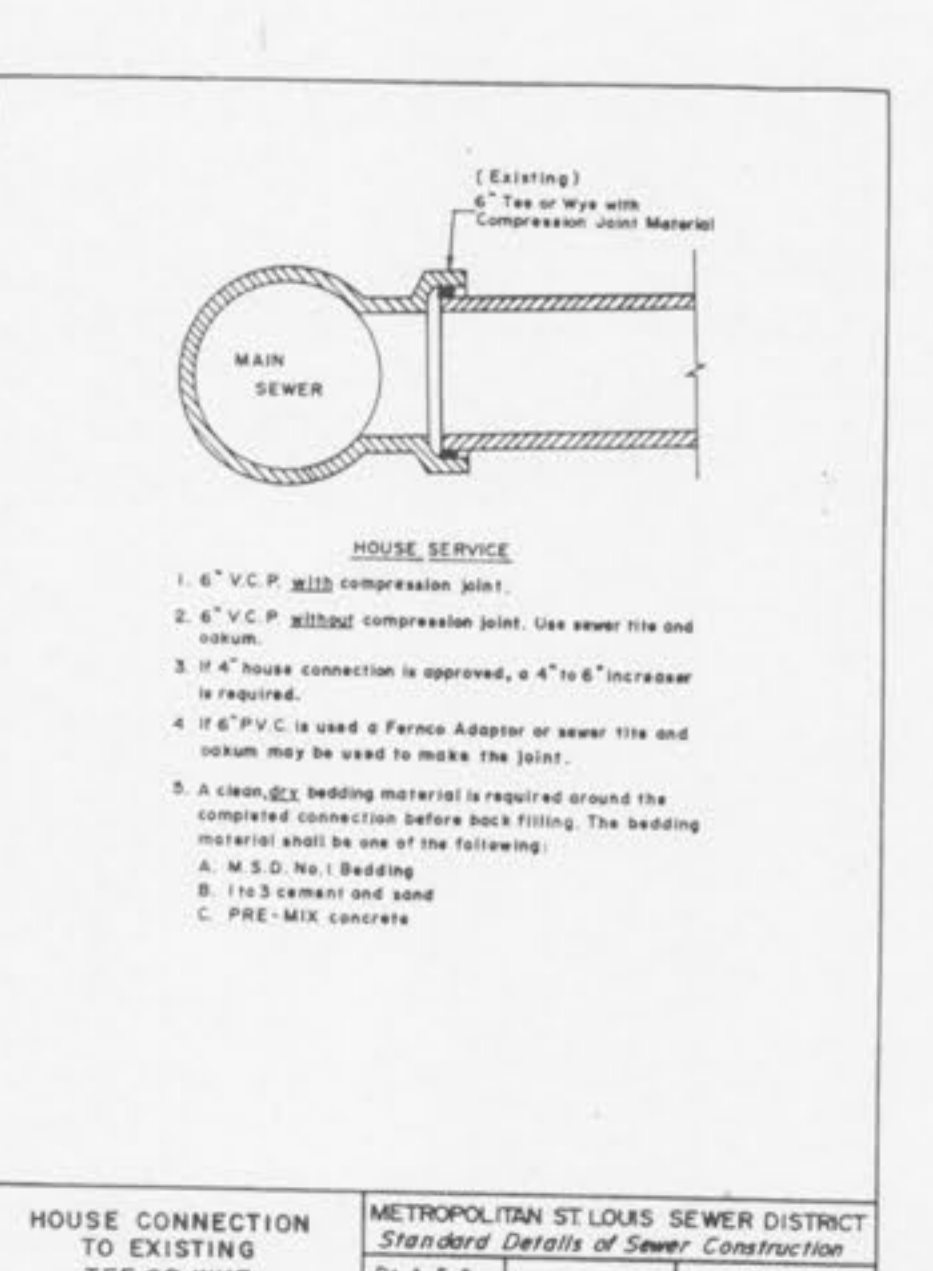
CAST IRON MANHOLE STEPS
 METROPOLITAN ST. LOUIS SEWER DISTRICT
 Standard Details of Sewer Construction
 Dr. A.N.Q. Ch. J.C.K. JAN 1987 Sheet 47



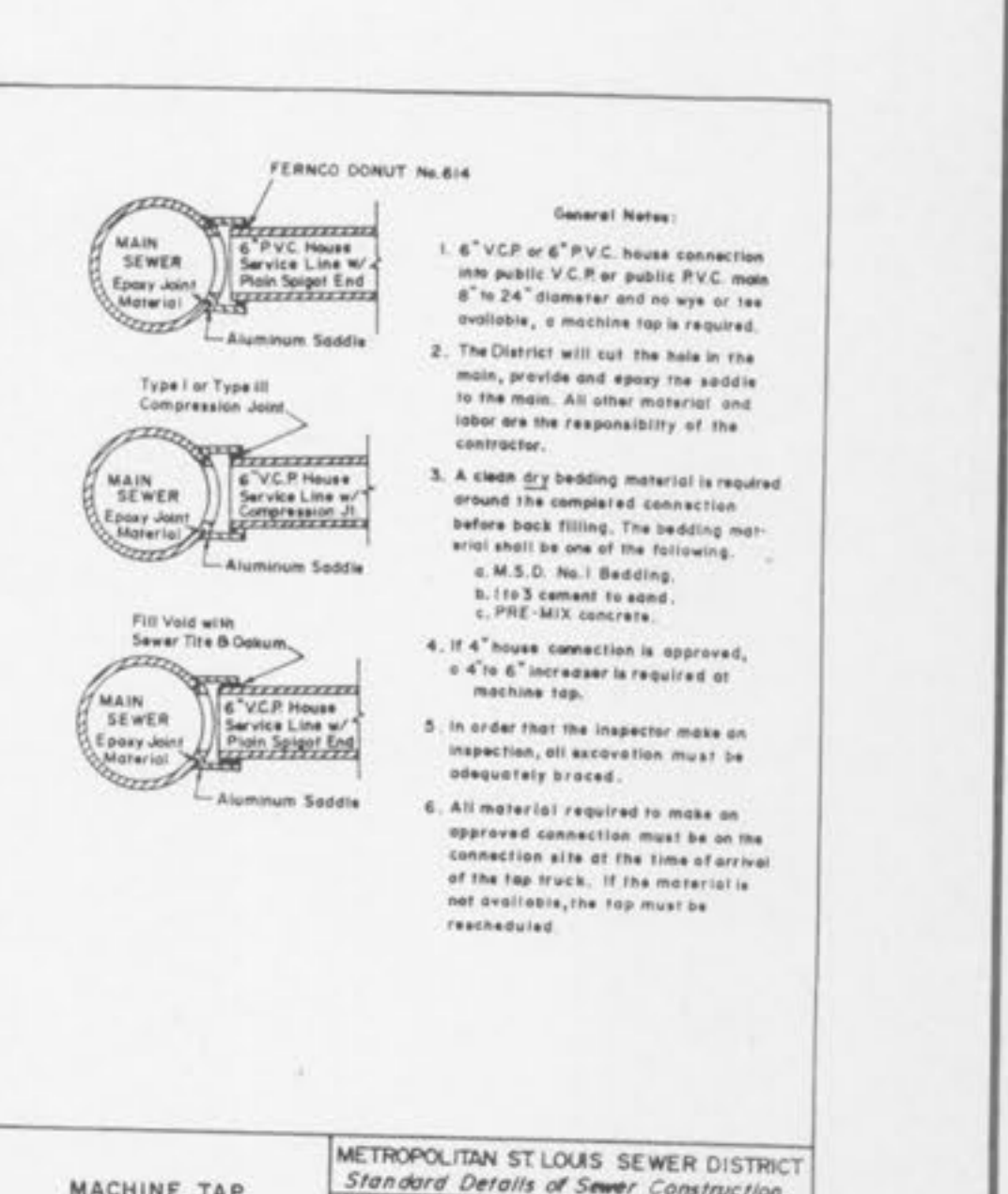
FLARED END SECTION
 METROPOLITAN ST. LOUIS SEWER DISTRICT
 Standard Details of Sewer Construction
 Dr. R.N. Ch. J.C.K. April 1979 Sheet 48



STORMWATER CHANNELS
 METROPOLITAN ST. LOUIS SEWER DISTRICT
 Standard Details of Sewer Construction
 Dr. R.N. Ch. J.C.K. April 1985 Sheet 49



HOUSE CONNECTION TO EXISTING TEE OR WYE
 METROPOLITAN ST. LOUIS SEWER DISTRICT
 Standard Details of Sewer Construction
 Dr. A.E.S. Ch. J.C.K. April 1978 Sheet 50



MACHINE TAP
 METROPOLITAN ST. LOUIS SEWER DISTRICT
 Standard Details of Sewer Construction
 Dr. A.E.S. Ch. J.C.K. April 1979 Sheet 51